

South Pembrokeshire Cluster Plan 2024/25



Our vision is to continue developing the health & wellbeing of the local population within South Pembrokeshire utilising the current services while developing new and innovative projects to common problems promoting multidisciplinary working and by working with wider partners and stakeholder in the third sector, therapies, local authority, mental health, children services and pharmacy to have a locality approach. The cluster approach is cradle to grave model approach with all current projects. We aim to support our local population to remain in their own home; with an emphasis on population wellbeing and community connection by establishing greater links with partner services.

About our Population

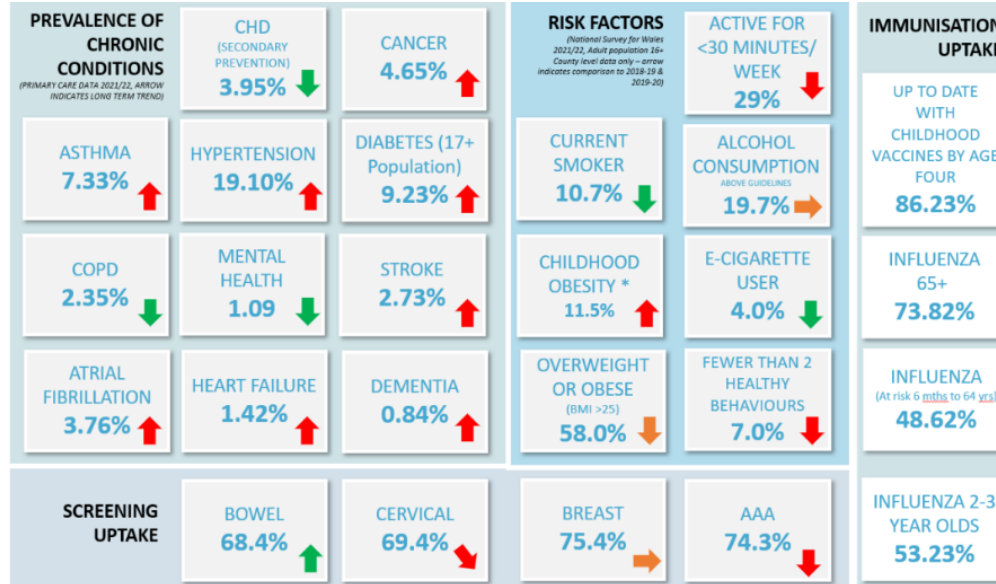


Males – **48.6%**
Females – **51.4%**

Aged 65+ – **27.0%**
Aged 85+ – **3.3%**



44.0% of people are in very good general health



About our Services



- 5 GP Practices with 3 Branch Surgeries
- 4 Dental Practices and 1 Orthodontic Practice
- 13 Community Pharmacies
- 5 Optometry Practices
- 0 Hospital
- 2 Community Hospital
- 21 Nursing and Residential Homes
- 4 Community Resource Team (Integrated Localities)

Between 1st April 2022 and 31st March 2023:



- There were **366,905** GP appointments of which **64%** were face to face
- **32%** of the appointments were urgent
- There were **1,763** consultations in the PIPs service for common ailments
- **1,381,758** items were dispensed by Pharmacies
- **15** people were seen by the Independent Prescribing Optometry Service

Cluster Budget (Recurrent)



- Spend for 2023/24 is **£422k**
- Budget for 2024/25 is **£393k**

Cluster Priorities 2023/24

- **Improving Childrens Health** – Improving Asthma in Primary Schools and our Young Mental Health project for under 18 children. These two projects are aimed at prevention and early intervention.
- **Integrated Community Network (ICN)** – Clinical tier affiliated to the current CRT/MDT model. To target our older age population with multi mobilities and frailty. This is proactively addressing unnecessary admissions, with risk stratification model of working.
- **FCP MSK Physiotherapist** – First point contact MSK FCP service within Primary setting. In keeping with the WG vision delivery care by the right people at the right setting in the right time.

Cluster Priorities 2024/25

- **Spirometry** testing and reporting through locally accessible clinics with the aim of clearing the current backlog and having no waiting list for future testing.
- To **continue** and **develop** existing successful cluster projects , i.e. Intergrated Community Network Youth Project, Improving Asthma Management in Primary Schools.
- **FCP MSK Physiotherapist** - aim to collect further data from the FCP MSK Physio project to mainstream this longstanding project since 2019.