

Vaccine Uptake in Children in Wales April to June 2017

COVER 123: Wales August 2017



Key points

- For children at one year of age in Wales, uptake of all routine immunisations, apart from rotavirus, exceeded 95% this quarter. Uptake of three doses of the “5 in 1” vaccine was 95% or higher in six of the seven Health Boards (HB) and in 17 of 22 Local Authority (LA) areas.
- Uptake of two doses of MenB vaccine in one year olds was 96% this quarter. Four HBs and 13 LA areas had an uptake above 95%.
- Uptake of the first dose of MMR vaccine in two year old children was just under 95% this quarter. Four HBs and ten LA areas achieved an uptake of 95% or over. Uptake of two doses of MMR vaccine by five years of age decreased to 90%.
- The proportion of children up to date with all routine immunisations by four years of age was 84% this quarter and was 88% in five year olds.
- Vaccination sessions for the first dose of the Human Papillomavirus (HPV) vaccine scheduled in girls in the 2016-17 school year 8 (12-13 year olds) were complete for most areas when data for this report were extracted. Uptake is currently 74%, and may increase over the next quarter. Uptake of one dose of HPV vaccine in the 2016-17 school year 9 (13-14 year olds) is 88%.
- Coverage of MenACWY vaccine in 2015-16 school year 9 and school year 11 children remained stable at 81% and 78% respectively. In the 2016-17 school year 9 and 11 groups, uptake is currently 80% and 79% respectively.
- Coverage of the Td/IPV teenage booster in the 2016-17 school year 10 (age 14-15 years) was 83%.
- Coverage of one dose of MMR vaccine in the 2016-17 school year 11 (age 15-16 years) was 93%, coverage of two doses was 88%.

Background

These results are for children living in Wales in June 2017 and reaching their first, second, fourth, fifth and 13th to 17th birthdays and relevant school years during the quarter 01/04/2017 to 30/06/2017. Uptake of key immunisation in older children, which are mainly provided through school based programmes in all areas other than Cardiff and Vale University Health Board, are presented as school year cohorts (children reaching their 14th, 15th and 16th birthdays between 01/09/2016 and 31/08/2017). Current uptake of HPV vaccination¹ dose 1 in girls in the 2016-17 school years 8, 9 and 10 is also presented. All of these school year groups will have been on the newer, two dose HPV vaccine schedule. BCG and hepatitis B immunisation uptake data are also presented here. These immunisations are given selectively following risk assessment (further information can be found in: Immunisation Against Infectious Disease, available from <http://immunisation.dh.gov.uk/category/the-green-book/>). Coverage of neonatal hepatitis B immunisation is presented here, using data from the Public Health Wales Neonatal Hepatitis B database.

MenACWY conjugate vaccine uptake figures for teenagers and young adults born from 01/09/1996 to 31/08/1999, vaccinated as part of the general practice-based catch-up campaign are available from: <http://www.wales.nhs.uk/sitesplus/888/page/88528>

Findings

1. Uptake of all three doses of the combined “5 in 1” DTaP/IPV/Hib² vaccine, scheduled at 2, 3 and 4 months of age, in children reaching their first birthday remained stable this quarter at 96.0%. Uptake ranged by HB from 94.8% (Hywel Dda) to 97.0% (Cwm Taf) and by LA from 93.3% (Denbighshire) to 98.1% (Merthyr Tydfil). Six of the seven HBs and 17 of the 22 LA areas achieved the target 95% uptake (Figures 1, 2 and 5, Tables 2 and 3).
2. Uptake of a complete two dose primary course of pneumococcal conjugate vaccination (PCV2) in children reaching their first birthday was 96.0% this quarter compared to 96.5% last quarter, ranging by LA from 94.1% (Monmouthshire) to 98.2% (Neath Port Talbot). Five of the seven HBs and 16 of the 22 LA areas achieved the target 95% uptake (Figures 1 and 2, Tables 2 and 3).
3. Uptake of two doses of MenB vaccine, scheduled at two and four months of age, in children reaching their first birthday decreased to 95.5% this quarter compared to 96.1% last quarter. Uptake in HBs ranged from 93.9% (Cardiff and Vale) to 96.6% (Cwm Taf) and ranged by LA from 92.5% (Ceredigion) to 98.1% (Merthyr Tydfil) (Figures 1 and 2, Tables 2 and 3).
4. Uptake of two doses of rotavirus vaccine in children reaching their first birthday decreased to 94.0% this quarter compared to 95.1% last quarter. Uptake in HBs ranged from 92.1% (Aneurin Bevan) to 96.6% (Cwm Taf) and ranged by LA from 89.8% (Blaenau Gwent) to 98.2% (Conwy) (Figures 1 and 2, Tables 2 and 3).
5. Uptake of the first dose of MMR³ in children reaching their second birthday (scheduled at 12 to 13 months of age) was 94.8% this quarter compared to 95.1% last quarter. Uptake ranged by HB from 93.2% (Hywel Dda) to 97.2% (Cwm Taf) and by LA area from 91.5% (Conwy) to 97.8% (Rhondda Cynon Taf) (Figures 1, 2 and 6, Tables 2 and 4). Four HBs and ten LA areas achieved the target of 95% uptake.
6. Uptake of the final dose of Pneumococcal Conjugate Vaccine (PCVf, scheduled at 12 to 13 months of age) in children reaching their second birthday was stable at 95.3% this quarter. Uptake by LA ranged from 92.6% (Conwy) to 98.1% (Rhondda Cynon Taf) (Figure 2, Tables 2 and 4). Four HBs and eleven LA areas achieved an uptake of 95% or over.
7. Uptake of the Hib/MenC booster (given at 12 to 13 months of age) in children reaching two years of age remained stable at 94.6% this quarter. Uptake ranged by HB from 92.9% (Cardiff and Vale) to 97.5% (Cwm Taf), and ranged by LA from 91.5% (Conwy) to 98.1% (Rhondda Cynon Taf). Three HBs and eight LA areas achieved uptakes in excess of 95% (Figures 1 and 2, Tables 2 and 4).
8. In children reaching four years of age this quarter (Table 5), uptake of:
 - The “4 in 1” DTaP/IPV⁴ pre-school booster was 87.5%
 - The Hib/MenC booster was 94.1%
 - Two doses of MMR was 85.6%

The proportion of children who were up to date with all these routine immunisations at four years of age decreased to 84.3% this quarter, compared to 84.9% last quarter. This ranged by HB from 77.3% (Aneurin Bevan) to 89.0% (Betsi Cadwaladr) and by LA from 64.7% (Blaenau Gwent) to 92.4% (Flintshire) (Figures 3 and 4, Tables 1, 2 and 5).

9. The proportion of children who were up to date with routine immunisations by their 5th birthday decreased to 87.8% this quarter, compared to 88.7% last quarter. This ranged by HB from 85.1% (Cardiff and Vale) to 91.3% (Betsi Cadwaladr) (Table 6). There has been an improvement of 3.2% in the proportion up to date in this cohort of children since we reported on them, aged 4 years, this time last year.

² DTaP/IPV/Hib vaccine protects against Diphtheria, Tetanus, Pertussis (Whooping Cough), Polio and Hib infection.

³ MMR protects against measles, mumps and rubella infections.

10. In children reaching five years of age this quarter, coverage of one dose of MMR was 97.0%. Uptake of two doses of MMR was 89.7% this quarter, compared to 90.4%, last quarter. Uptake of two doses of MMR ranged by HB from 86.2% (Powys) to 92.4% (Betsi Cadwaladr) and by LA from 83.9% (Newport) to 95.2% (Anglesey) (Figures 1, 2 and 7, Tables 2, 6 and 7).
11. Uptake of the "4 in 1" DTaP/IPV⁴ pre-school booster in children reaching their fifth birthday remained stable at 92.7% this quarter compared to 93.1% in the previous quarter, ranging by HB from 89.8% (Aneurin Bevan) to 96.5% (Betsi Cadwaladr) and by LA from 87.3% (Newport) to 98.6% (Anglesey). One of the seven HBs, and six of the 22 LAs achieved the 95% uptake target (Figure 8, Tables 2, 6 and 7).
12. Uptake of the first dose of HPV vaccine for girls in the 2016-17 school year 8 group (turning 13 years of age during 01/09/16 to 31/08/17) is currently 73.7%. Coverage of the first dose in the 2016-17 school year 9 is currently 87.9% and uptake of the second dose in this age group is currently 68.1%. Timings of school vaccination sessions vary throughout the year and although vaccination sessions for girls in the 2016-17 school year 8 group (dose one) and 2016-17 school year 9 (dose two) would be mostly complete, some sessions and data-entry may have taken place after the data were extracted for this report. Coverage of a complete two dose course of HPV vaccine in 2016-17 school year 10 girls (girls reaching their 15th birthday during 01/09/16 to 31/08/17) is currently 86.5% (Table 8).
13. The MenACWY conjugate vaccine was introduced in September 2015 replacing the single antigen meningococcal C teenage booster that was previously given to children in school year 9 [1]. A phased catch up campaign was also introduced for older children with those aged 16 years (school year 11) being vaccinated in school and those aged 17 to 19 being vaccinated in general practice.
 - Current uptake of the MenACWY vaccine in the 2016-17 school year 9 routine cohort is 80.4% (Table 9 and Table 10).
 - Coverage in the in the 2016-17 school year 10 group, the first school year 9 routine cohort to be offered the new vaccine, is currently 80.6% (Table 9 and Table 11).
 - Current uptake of the MenACWY vaccine in the 2016-17 school year 11 catch-up cohort is 79.2% (Table 9 and Table 12).
 - Coverage in the in the 2016-17 school year 12 group, the first catch-up cohort to be offered the new vaccine in Year 11, is currently 78.2% (Table 9).
14. Uptake of the Td/IPV⁵ teenage booster in the 2016-17 school year 9 group (children reaching 14 years of age) was 80.1%. Coverage of two doses of MMR in this year group was 88.0% and coverage of one dose was 92.9%. Coverage of two doses of MMR vaccine ranged by HB from 78.6% (Powys) to 90.6% (Betsi Cadwaladr). Coverage of a full course (two doses of MMR) of immunisation against rubella in 14 year old girls in this school year group was 88.5% (Table 10).
15. Coverage of the Td/IPV teenage booster in the 2016-17 school year 10 group (children reaching 15 years of age) was 83.3%. Coverage ranged by HB from 72.9% (Cardiff and Vale) to 91.1% (Cwm Taf). Coverage of two doses of MMR in this year group was 87.3% and coverage of one dose was 92.6%. Coverage of two doses of MMR vaccine ranged by HB from 82.7% (Powys) to 90.6% (Betsi Cadwaladr). Coverage of a full course (two doses of MMR) of immunisation against rubella in 15 year old girls in this school year group was currently 88.1% (Table 11).
16. Coverage of the Td/IPV teenage booster in the 2016-17 school year 11 group (children reaching 16 years of age) was 84.7%. Coverage ranged by HB from 76.0% (Cardiff and Vale) to 91.8% (Cwm Taf). Coverage of two doses of MMR in this year group was 88.2% and coverage of one dose was 93.3%. Coverage of two doses of MMR vaccine ranged by HB from 83.3% (Powys) to 90.1% (Betsi Cadwaladr). Coverage of a full course (two doses of MMR) of immunisation against rubella in 16 year old girls in this school year group was 89.1% (Table 12).

⁴DTaP/IPV (and dTaP/IPV) vaccines boost protection against Diphtheria, Tetanus, Pertussis and Polio infection before school entry.

⁵Td/IPV boosts protection against Diphtheria, Tetanus and Polio infection before entering adulthood.

⁶BCG protects against tuberculosis infection. Numbers of eligible children for BCG are not known.

17. Coverage of two doses of MMR in children reaching 16 years of age this quarter (between 1st April 2017 and 30th June 2017) was 88.6%, compared to 87.2% for the previous quarter. Coverage of one dose of MMR was 93.3% this quarter, compared to 92.7% last quarter. Coverage of a full course (two doses of MMR) of immunisation against rubella in 16 year old girls this quarter was 89.5% this quarter compared to 87.5% last quarter. National coverage of the Td/IPV teenage booster in children reaching 16 years of age increased to 85.2% this quarter, compared to 83.8% last quarter (Figures 1 and 2, Tables 2 and 13).
18. Uptake of BCG⁶ immunisation is presented in Table 14. These data are based on BCG immunisations recorded in the National Community Child Health Database. BCG immunisation has been received by 4.2%, 6.6%, 6.8% and 4.7% of children reaching their first, second, fifth and 16th birthdays (respectively) during quarter two of 2017. This quarter Newport LA had the highest proportions of children given BCG by both one (13.9%) and two (16.5%) years of age.
19. Uptake data for hepatitis B immunisation, extracted from the Public Health Wales All Wales Neonatal Hepatitis B immunisation database, is presented in Table 15. Uptake of three doses of hepatitis B vaccine in children who were at risk of perinatal infection and reached their first birthday this quarter was 100%. Uptake of four doses of hepatitis B vaccine in children who were at risk of perinatal infection and reached their second birthday this quarter was 81.8%. Uptake of four doses of hepatitis B vaccine in children who were at risk of perinatal infection and reached their fifth birthday this quarter was 88.9%. Proportions should be interpreted with caution as small numbers of babies require hepatitis B immunisation.

Comment

Uptake of all routine primary immunisations in infants in Wales reaching their first birthday was 95% or over again this quarter, excluding rotavirus (which can't be given beyond 24 weeks of age). This is the fourth COVER report to include uptake figures for two doses of meningococcal group B vaccine in babies and uptake remains over 95%. Next quarter will be the first time uptake of the complete three dose course of Men B vaccine at two years will be reported on. National uptake of MMR vaccination in two year olds decreased to slightly below 95% again this quarter, reaching 95% in four of the seven HBs.

Uptake of routine immunisations by four and five years of age continues to follow a generally decreasing trend, as seen over the past two years. However, the proportion of children who are up to date with their immunisations by four years of age varies greatly between HBs from 77% to 89%. Uptake of two doses of MMR vaccine remains the lowest of all vaccinations included in this composite measure.

There has been an ongoing outbreak of measles in the Newport and Torfaen areas of Aneurin Bevan University HB since May 2017 with the total number of confirmed cases currently at 16 [2]. Before the summer break, catch-up sessions in schools across Newport organised in response to this outbreak were effective in immunising over 1,000 children with their first or second dose of MMR. At the time data for this report were extracted, coverage of one dose of MMR vaccine remained under 95% for all secondary school year groups reported on across Wales and coverage of two doses of MMR vaccine remained under 90%. As the measles virus is highly infectious, checking the MMR immunisation status of children and offering catch-up MMR to children who have missed vaccinations is vital in controlling outbreaks and limiting onward transmission, both in General Practices across Wales and in school settings.

The large ongoing outbreak of measles across Europe continues to spread and has so far resulted in more than 14,000 cases and 40 deaths since 1st January 2016 [3]. People travelling to Europe over the summer holidays should ensure they are up to date with two doses of MMR vaccine. Ensuring that vaccination coverage levels in school-aged children are high is important in preventing spread of measles from those returning from outbreak areas.

Uptake of MenACWY vaccine in last year's routine Year 9 cohort (current 2016-17 school year 10) and last year's catch-up Year 11 cohort (current 2016-17 school year 12) remained stable this quarter at 81% and 78% respectively. Vaccination sessions for 2016-17 school year 9 and 11

groups have been completed in most area although uptake may increase over the next quarter. Uptake of the MenACWY vaccine in age groups vaccinated in General Practice (now aged 18, 19 and 20 years of age), remains low at 33%, 40% and 41% respectively as at 08/08/2017 [4].

References

[1] Welsh Government (2015) Meningococcal ACWY conjugate vaccination (MenACWY) - Revision, Welsh Health Circular. WHC(2015)037. <http://gov.wales/docs/dhss/publications/150724whc037en.pdf>

[2] Public Health Wales (2017). Further case in Gwent measles outbreak. Public Health Wales Health Protection. <http://www.wales.nhs.uk/sitesplus/888/news/45888>

[3] ECDC (2017) Epidemiological update: Measles - monitoring European outbreaks, 4 August 2017. <https://ecdc.europa.eu/en/news-events/epidemiological-update-measles-monitoring-european-outbreaks-4-august-2017>

[4] Public Health Wales (2017). MenACWY catch-up immunisation uptake data (collected through Audit+). Public Health Wales Vaccine Preventable Disease Programme and Communicable Disease Surveillance Centre. <http://www.wales.nhs.uk/sitesplus/888/page/88528>

Changes to the COVER report

Since 2016 Quarter 2 (COVER 119) coverage figures by school year has been included for the older age groups. This is intended to give a clearer picture of the proportion of children protected against vaccine preventable disease at any given quarter and the progress of school based vaccine programmes throughout the academic year. At the time data for this report were extracted, most vaccination sessions for the 2016-17 school year will have been completed. However, some may have taken place after data were extracted for this report and data returns may be incomplete. All vaccinations in Cardiff and Vale (apart from the HPV vaccine and the MenACWY catch-up campaign in 16 year olds) are given through General Practice and children are invited for vaccinations throughout the year when they turn the appropriate age.

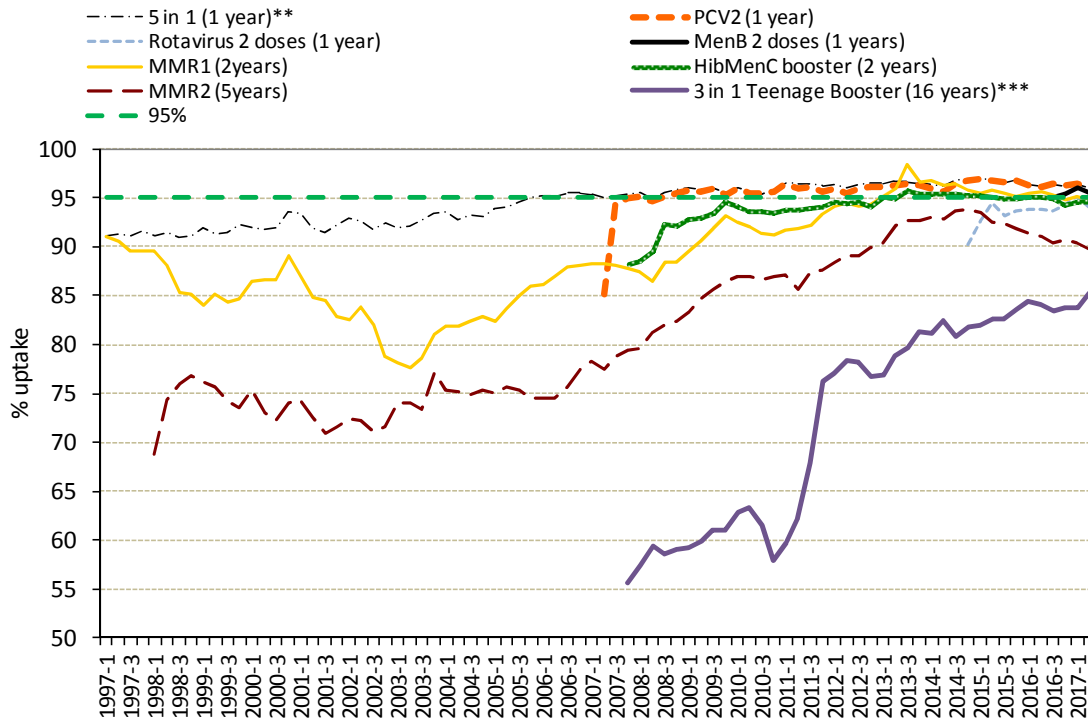
Report prepared by Public Health Wales Vaccine Preventable Disease Programme and Communicable Disease Surveillance Centre.

Data for this report was provided by NHS Wales Informatics Service from the National Community Child Health Database (NCCHD). The data was sourced from Community Child Health databases maintained by local Child Health Office staff in Trusts throughout Wales based on regular returns from doctors and nurses who immunise or advise on immunisation. Uptake data presented throughout are for HB resident population, not for HB GP practice populations. The maps, graphs, tables 1 and 2 are best viewed in colour.

Suggested citation for this report: Public Health Wales Health Protection Division. Vaccine uptake in Children in Wales, April to June 2017: COVER report 123, August 2017. Cardiff, Public Health Wales.

For further information on this report please contact: surveillance.requests@wales.nhs.uk

Figure 1. Percentage uptake of childhood immunisations in Wales, quarter 1 1997 to quarter 2 2017*. Data are for children reaching 1 year of age each quarter for '5 in 1', MenB (two doses), Rotavirus (two doses) and pneumococcal conjugate vaccine (PCV2), children reaching 2 years of age for MMR1 (first dose) and the Hib/MenC booster, 5 years of age for MMR2 (second dose) and 16 years of age for the '3 in 1' teenage booster*



* Uptake data for quarter 3 2014 to quarter 4 2014 presented here are based on estimates calculated in August 2015, rather than published data, due to data quality problems affecting reported uptake of some immunisations in reports published during this period.

** Uptake of pertussis used as proxy

*** Teenage booster dose of diphtheria, tetanus and polio (diphtheria used as proxy). Uptake not reported prior to 2007 quarter 4.

Figure 2. Summary of uptake rates for selected immunisations in resident children reaching their 1st, 2nd, 5th and 16th birthday between 01/04/17 and 30/06/17 and resident on 30/06/17.

All Wales Summary - COVER123

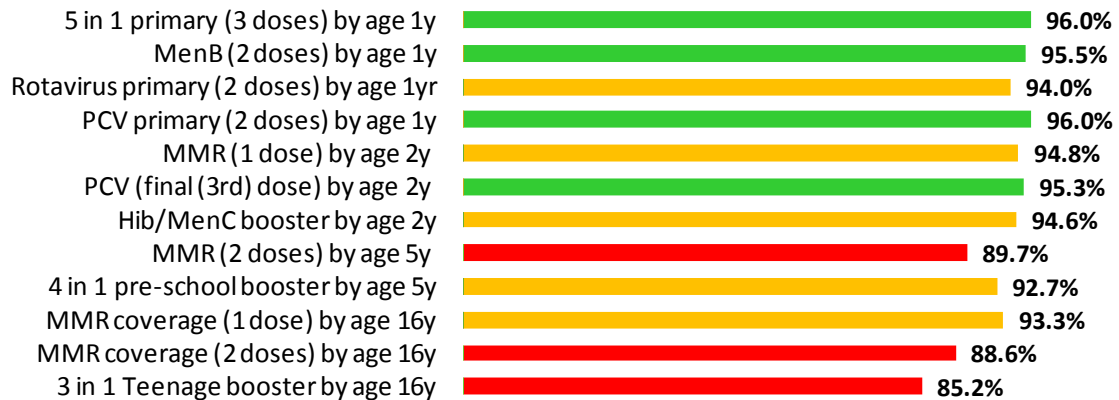


Figure 3. Percentage uptake of resident children reaching their 4th birthday between 01/04/17 and 30/06/17 and are up to date with all scheduled vaccines⁷ by Health Board.

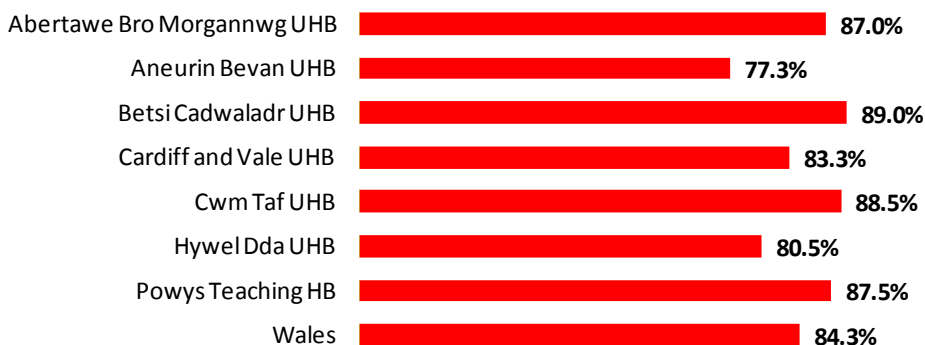
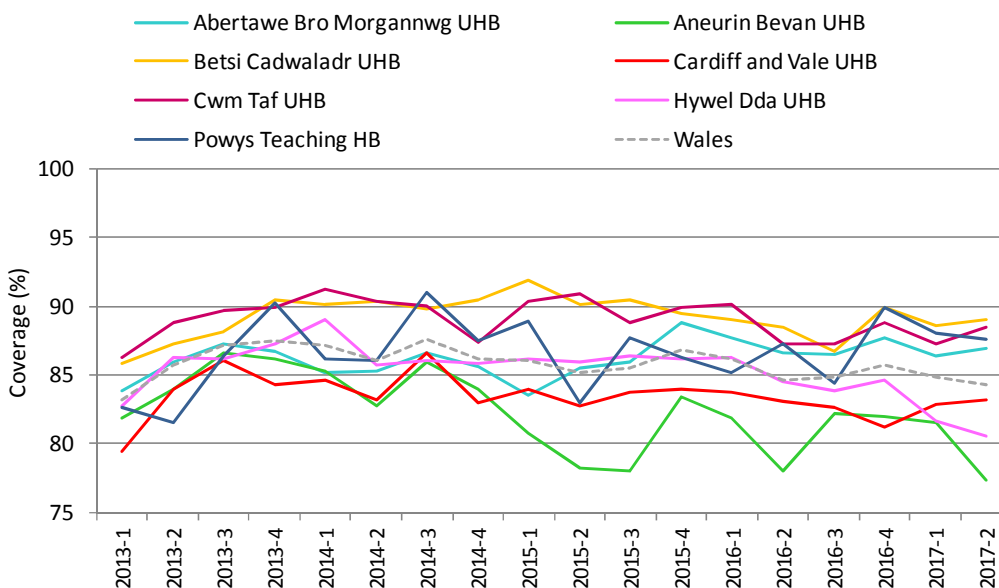


Table 1. Percentages of resident children reaching their 4th birthday during quarter 2 2016 to quarter 2 2017 who are up to date with all scheduled vaccines⁷, by Health Board.

Area	Up to date in schedule				
	2016-2	2016-3	2016-4	2017-1	2017-2
Abertawe Bro Morgannwg UHB	86.6	86.4	87.7	86.4	87.0
Aneurin Bevan UHB	78.0	82.2	81.9	81.5	77.3
Betsi Cadwaladr UHB	88.5	86.7	89.9	88.6	89.0
Cardiff and Vale UHB	83.0	82.7	81.2	82.9	83.3
Cwm Taf UHB	87.3	87.3	88.8	87.3	88.5
Hywel Dda UHB	84.5	83.8	84.6	81.6	80.5
Powys Teaching HB	87.3	84.4	89.9	88.0	87.5
Wales	84.6	84.8	85.7	84.9	84.3

Figure 4. Trends in the percentages of children reaching their 4th birthday who are up to date with all scheduled vaccines⁷, by Health Board*.



* Uptake data for quarter 3 2014 to quarter 4 2014 presented here are based on estimates calculated in August 2015, rather than published data, due to data quality problems affecting reported uptake of some immunisations in reports published during this period.

⁷Completed "4 in 1" preschool booster, the Hib/MenC booster and second MMR dose by four years of age. The calculation method for proportions of children up to date with routine immunisation by four years of age was revised during 2014 quarter 1, to remove the pneumococcal conjugate vaccine booster dose, as this is not clinically indicated after two years of age.

Figure 5. Uptake of “5 in 1” vaccine in Welsh Local Authority areas in children reaching their 1st birthday between 01/04/17 and 30/06/17.

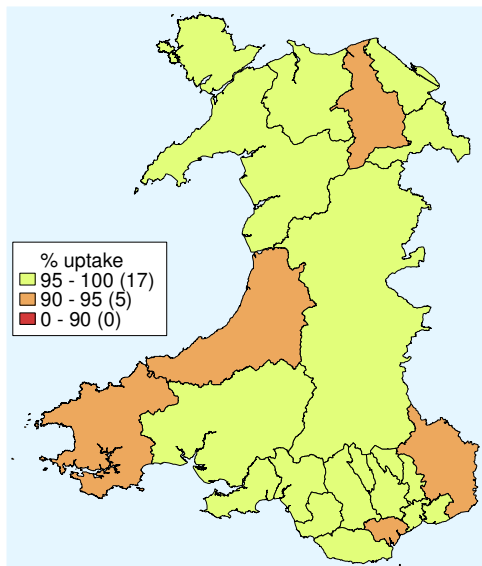


Figure 6. Uptake of at least 1 dose of MMR immunisation in Welsh Local Authority areas in children reaching their 2nd birthday between 01/04/17 and 30/06/17.

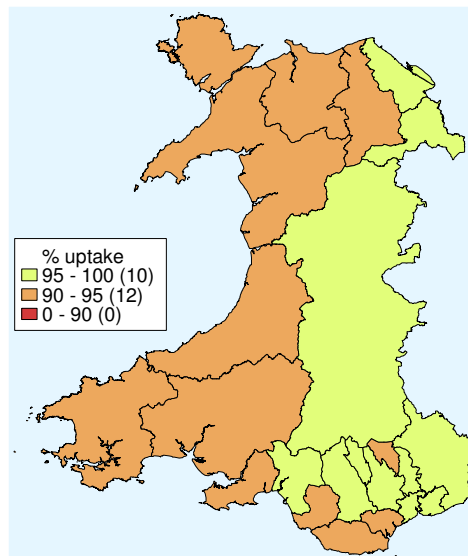


Figure 7. Uptake of two doses of MMR vaccine in Welsh Local Authority areas in children reaching their 5th birthday between 01/04/17 and 30/06/17.

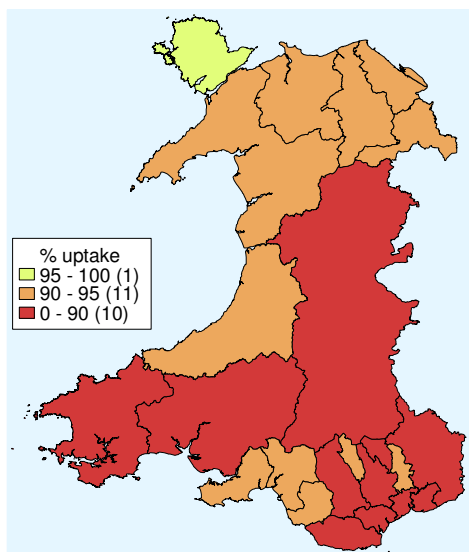


Figure 8. Uptake of “4 in 1” vaccine in Welsh Local Authority areas in children reaching their 5th birthday between 01/04/17 and 30/06/17.

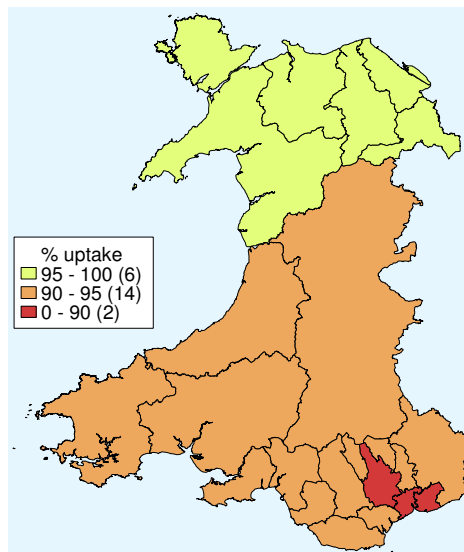


Table 2. Summary table with uptake of selected immunisations in resident children reaching their 1st, 2nd, 5th and 16th birthday between 01/04/17 and 30/06/17 and resident on 30/06/17.

Area	Age 1 year					Age 2 years				Age 4 years		Age 5 years			Age 16 years				
	Resident children (n)	5 in 1 ¹	MenB ²	PCV2	Rotavirus	Resident children (n)	MMR1	PCV ³	Hib/MenC	Resident Children (n)	Up to date in schedule ⁴	Resident children (n)	MMR2	4 in 1 ¹	Resident children (n)	MMR1	MMR2	MenACWY	3 in 1 Teenage booster ⁵
Abertawe Bro Morgannwg UHB																			
Bridgend LA	402	96.5	96.0	96.5	95.3	360	93.6	95.0	93.3	376	87.5	410	91.7	92.4	378	95.8	92.3	87.6	89.4
Neath Port Talbot LA	389	97.9	97.9	98.2	97.2	388	95.1	96.4	96.1	350	87.7	386	94.0	94.3	346	94.2	90.2	86.7	89.6
Swansea LA	617	96.4	95.9	96.3	94.8	636	92.9	94.0	94.0	654	86.2	685	91.4	92.0	649	94.9	87.2	84.1	88.4
Health Board Total	1408	96.9	96.5	96.9	95.6	1384	93.7	94.9	94.4	1380	87.0	1481	92.2	92.7	1373	95.0	89.4	85.7	89.0
Aneurin Bevan UHB																			
Blaenau Gwent LA	197	96.4	97.5	97.5	89.8	176	93.8	94.3	94.3	184	64.7	183	89.6	91.3	194	95.4	89.7	79.9	84.0
Caerphilly LA	500	96.2	96.4	96.4	93.0	504	97.4	97.2	96.4	483	83.6	525	88.6	89.0	490	96.7	93.7	80.0	84.7
Monmouthshire LA	185	94.1	93.5	94.1	91.4	210	95.7	94.8	94.3	214	86.4	242	88.0	93.0	278	83.5	78.4	72.7	75.2
Newport LA	474	96.0	95.8	96.0	91.6	480	95.0	94.6	92.3	519	68.8	498	83.9	87.3	418	94.3	89.0	74.6	81.3
Torfaen LA	255	95.7	94.5	96.5	93.3	276	95.3	95.7	95.3	259	84.2	278	90.3	92.1	277	96.4	92.8	77.6	88.1
Health Board Total	1611	95.8	95.7	96.2	92.1	1646	95.7	95.6	94.5	1659	77.3	1726	87.5	89.8	1657	93.7	89.3	77.0	82.7
Betsi Cadwaladr UHB																			
Anglesey LA	187	97.3	96.8	96.8	95.2	153	93.5	95.4	94.8	186	91.4	208	95.2	98.6	181	95.0	93.4	74.6	86.7
Conwy LA	223	96.9	96.4	96.4	98.2	282	91.5	92.6	91.5	262	88.9	303	92.7	95.7	317	92.7	84.5	77.6	85.8
Denbighshire LA	270	93.3	93.7	94.4	92.6	274	94.2	94.9	94.9	261	83.9	259	92.3	95.8	282	89.4	85.8	77.0	88.3
Flintshire LA	389	96.7	96.4	96.7	94.6	399	97.2	97.7	97.2	397	92.4	438	90.0	97.0	396	93.9	90.9	74.0	86.9
Gwynedd LA	303	97.7	97.0	97.7	97.0	273	94.5	94.9	93.8	282	87.9	345	92.5	95.1	307	94.1	91.9	63.2	86.6
Wrexham LA	383	96.3	96.6	97.1	95.6	396	96.7	97.2	96.2	409	88.8	405	93.6	97.0	331	96.7	93.4	69.8	85.8
Health Board Total	1755	96.4	96.2	96.6	95.4	1777	95.0	95.7	95.0	1797	89.0	1958	92.4	96.5	1814	93.7	89.9	72.5	86.7
Cardiff and Vale UHB																			
Cardiff LA	1136	94.8	93.7	94.8	91.7	1088	93.8	93.3	92.6	1042	82.5	1162	86.9	91.6	889	91.1	85.5	76.0	75.5
Vale of Glamorgan LA	353	95.5	94.6	94.9	94.3	357	94.4	95.0	93.8	358	85.5	386	88.9	91.2	324	92.9	87.7	71.0	81.2
Health Board Total	1489	95.0	93.9	94.8	92.3	1445	94.0	93.7	92.9	1400	83.3	1548	87.4	91.5	1213	91.6	86.1	74.7	77.0
Cwm Taf UHB																			
Merthyr Tydfil LA	157	98.1	98.1	98.1	97.5	189	95.2	96.3	95.2	169	92.3	176	90.9	93.8	146	91.8	84.9	83.6	94.5
Rhondda Cynon Taf LA	671	96.7	96.3	96.9	96.4	674	97.8	98.1	98.1	699	87.6	689	89.7	92.3	637	95.3	88.1	84.3	90.3
Health Board Total	828	97.0	96.6	97.1	96.6	863	97.2	97.7	97.5	868	88.5	865	89.9	92.6	783	94.6	87.5	84.2	91.1
Hywel Dda UHB																			
Carmarthenshire LA	469	95.3	94.7	94.5	94.0	466	93.6	94.6	92.5	464	81.7	502	87.3	90.2	508	90.9	88.8	81.9	91.5
Ceredigion LA	133	94.0	92.5	94.7	92.5	183	92.9	94.0	94.0	145	85.5	200	91.5	94.5	153	95.4	92.2	81.0	90.2
Pembrokeshire LA	285	94.4	94.7	95.1	92.3	301	92.7	94.0	93.4	294	76.2	319	89.0	92.8	327	92.4	87.8	66.7	81.3
Health Board Total	887	94.8	94.4	94.7	93.2	950	93.2	94.3	93.1	903	80.5	1021	88.6	91.9	988	92.1	89.0	76.7	88.0
Powys Teaching UHB	293	96.2	94.9	96.2	92.5	330	96.4	97.0	96.7	297	87.5	297	86.2	92.6	288	89.9	85.1	81.6	84.0
Unknown	7	85.7	71.4	71.4	71.4	4	100.0	100.0	100.0	24	83.3	14	100.0	100.0	32	87.5	81.3	71.9	68.8
Wales Total	8278	96.0	95.5	96.0	94.0	8399	94.8	95.3	94.6	8328	84.3	8910	89.7	92.7	8148	93.3	88.6	77.9	85.2

¹ Uptake of pertussis used as proxy

² Uptake of two doses of meningococcal serogroup B (MenB) vaccine, scheduled at two and four months of age

³ Children receiving the final dose of PCV

⁴ Completed "4 in 1" preschool booster, the Hib/ MenC booster and second MMR dose by four years of age

⁵ Uptake of diphtheria (reinforcing booster dose) used as proxy

	95% and higher
	90% to 95%
	below 90%

Table 3. Vaccine uptake in children reaching their 1st birthday between 01/04/17 and 30/06/17 and resident on 30/06/17.

Area	Resident children	D3	T3	P3	Po3	Hib3	MMR1	Rotavirus	PCV2 ¹	Men B ²	HibMenC
	(n)	(n) (%)	(n) (%)	(n) (%)	(n) (%)	(n) (%)	(n) (%)	(n) (%)	(n) (%)	(n) (%)	(n) (%)
Abertawe Bro Morgannwg University HB											
Bridgend LA	402	388 96.5	388 96.5	388 96.5	388 96.5	388 96.5	1 0.2	383 95.3	388 96.5	386 96.0	1 0.2
Neath Port Talbot LA	389	381 97.9	381 97.9	381 97.9	381 97.9	381 97.9	0 0.0	378 97.2	382 98.2	381 97.9	0 0.0
Swansea LA	617	595 96.4	595 96.4	595 96.4	595 96.4	595 96.4	2 0.3	585 94.8	594 96.3	592 95.9	0 0.0
Health Board Total	1408	1364 96.9	1364 96.9	1364 96.9	1364 96.9	1364 96.9	3 0.2	1346 95.6	1364 96.9	1359 96.5	1 0.1
Aneurin Bevan University HB											
Blaenau Gwent LA	197	190 96.4	190 96.4	190 96.4	190 96.4	190 96.4	0 0.0	177 89.8	192 97.5	192 97.5	0 0.0
Caerphilly LA	500	481 96.2	481 96.2	481 96.2	481 96.2	481 96.2	1 0.2	465 93.0	482 96.4	482 96.4	2 0.4
Monmouthshire LA	185	174 94.1	174 94.1	174 94.1	174 94.1	174 94.1	2 1.1	169 91.4	174 94.1	173 93.5	1 0.5
Newport LA	474	455 96.0	455 96.0	455 96.0	455 96.0	455 96.0	1 0.2	434 91.6	455 96.0	454 95.8	0 0.0
Torfaen LA	255	244 95.7	244 95.7	244 95.7	244 95.7	244 95.7	0 0.0	238 93.3	246 96.5	241 94.5	0 0.0
Health Board Total	1611	1544 95.8	1544 95.8	1544 95.8	1544 95.8	1544 95.8	4 0.2	1483 92.1	1549 96.2	1542 95.7	3 0.2
Betsi Cadwaladr University HB											
Anglesey LA	187	182 97.3	182 97.3	182 97.3	182 97.3	182 97.3	0 0.0	178 95.2	181 96.8	181 96.8	0 0.0
Conwy LA	223	216 96.9	216 96.9	216 96.9	216 96.9	216 96.9	2 0.9	219 98.2	215 96.4	215 96.4	2 0.9
Denbighshire LA	270	252 93.3	252 93.3	252 93.3	252 93.3	252 93.3	2 0.7	250 92.6	255 94.4	253 93.7	1 0.4
Flintshire LA	389	376 96.7	376 96.7	376 96.7	376 96.7	376 96.7	2 0.5	368 94.6	376 96.7	375 96.4	1 0.3
Gwynedd LA	303	296 97.7	296 97.7	296 97.7	296 97.7	296 97.7	2 0.7	294 97.0	296 97.7	294 97.0	1 0.3
Wrexham LA	383	369 96.3	369 96.3	369 96.3	369 96.3	369 96.3	3 0.8	366 95.6	372 97.1	370 96.6	3 0.8
Health Board Total	1755	1691 96.4	1691 96.4	1691 96.4	1691 96.4	1691 96.4	11 0.6	1675 95.4	1695 96.6	1688 96.2	8 0.5
Cardiff and Vale University HB											
Cardiff LA	1136	1077 94.8	1077 94.8	1077 94.8	1076 94.7	1076 94.7	8 0.7	1042 91.7	1077 94.8	1064 93.7	10 0.9
Vale of Glamorgan LA	353	337 95.5	337 95.5	337 95.5	337 95.5	337 95.5	1 0.3	333 94.3	335 94.9	334 94.6	0 0.0
Health Board Total	1489	1414 95.0	1414 95.0	1414 95.0	1413 94.9	1413 94.9	9 0.6	1375 92.3	1412 94.8	1398 93.9	10 0.7
Cwm Taf University HB											
Merthyr Tydfil LA	157	154 98.1	154 98.1	154 98.1	154 98.1	154 98.1	0 0.0	153 97.5	154 98.1	154 98.1	0 0.0
Rhondda Cynon Taf LA	671	649 96.7	649 96.7	649 96.7	649 96.7	649 96.7	2 0.3	647 96.4	650 96.9	646 96.3	4 0.6
Health Board Total	828	803 97.0	803 97.0	803 97.0	803 97.0	803 97.0	2 0.2	800 96.6	804 97.1	800 96.6	4 0.5
Hywel Dda University HB											
Carmarthenshire LA	469	447 95.3	447 95.3	447 95.3	447 95.3	447 95.3	4 0.9	441 94.0	443 94.5	444 94.7	5 1.1
Ceredigion LA	133	125 94.0	125 94.0	125 94.0	125 94.0	125 94.0	0 0.0	123 92.5	126 94.7	123 92.5	0 0.0
Pembrokeshire LA	285	269 94.4	269 94.4	269 94.4	269 94.4	269 94.4	0 0.0	263 92.3	271 95.1	270 94.7	0 0.0
Health Board Total	887	841 94.8	841 94.8	841 94.8	841 94.8	841 94.8	4 0.5	827 93.2	840 94.7	837 94.4	5 0.6
Powys Teaching HB											
	293	282 96.2	282 96.2	282 96.2	282 96.2	282 96.2	0 0.0	271 92.5	282 96.2	278 94.9	0 0.0
Unknown	7	6 85.7	6 85.7	6 85.7	6 85.7	6 85.7	0 0.0	5 71.4	5 71.4	5 71.4	0 0.0
Wales Total	8278	7945 96.0	7945 96.0	7945 96.0	7944 96.0	7943 96.0	33 0.4	7782 94.0	7951 96.0	7907 95.5	31 0.4

¹ Full primary two dose course of pneumococcal conjugate vaccine.

² Uptake of two doses of meningococcal serogroup B (MenB) vaccine, scheduled at two and four months of age.

Table 4. Vaccine uptake in children reaching their 2nd birthday between 01/04/17 and 30/06/17 and resident on 30/06/17.

Area	Resident children	D3		T3		P3		Po3		Hib3		MMR1		MenC ¹		PCV2 ²		PCVf ³		HibMenC	
	(n)	(n)	(%)	(n)	(%)	(n)	(%)	(n)	(%)	(n)	(%)	(n)	(%)	(n)	(%)	(n)	(%)	(n)	(%)	(n)	(%)
Abertawe Bro Morgannwg University HB																					
Bridgend LA	360	349	96.9	349	96.9	349	96.9	349	96.9	349	96.9	337	93.6	346	96.1	341	94.7	342	95.0	336	93.3
Neath Port Talbot LA	388	381	98.2	381	98.2	381	98.2	381	98.2	381	98.2	369	95.1	380	97.9	377	97.2	374	96.4	373	96.1
Swansea LA	636	617	97.0	617	97.0	617	97.0	616	96.9	617	97.0	591	92.9	603	94.8	601	94.5	598	94.0	598	94.0
Health Board Total	1384	1347	97.3	1347	97.3	1347	97.3	1346	97.3	1347	97.3	1297	93.7	1329	96.0	1319	95.3	1314	94.9	1307	94.4
Aneurin Bevan University HB																					
Blaenau Gwent LA	176	174	98.9	174	98.9	174	98.9	174	98.9	174	98.9	165	93.8	174	98.9	174	98.9	166	94.3	166	94.3
Caerphilly LA	504	495	98.2	495	98.2	495	98.2	494	98.0	495	98.2	491	97.4	493	97.8	490	97.2	490	97.2	486	96.4
Monmouthshire LA	210	201	95.7	201	95.7	201	95.7	201	95.7	201	95.7	201	95.7	201	95.7	199	94.8	199	94.8	198	94.3
Newport LA	480	460	95.8	460	95.8	460	95.8	460	95.8	459	95.6	456	95.0	454	94.6	449	93.5	454	94.6	443	92.3
Torfaen LA	276	273	98.9	273	98.9	273	98.9	273	98.9	272	98.6	263	95.3	272	98.6	273	98.9	264	95.7	263	95.3
Health Board Total	1646	1603	97.4	1603	97.4	1603	97.4	1602	97.3	1601	97.3	1576	95.7	1594	96.8	1585	96.3	1573	95.6	1556	94.5
Betsi Cadwaladr University HB																					
Anglesey LA	153	147	96.1	147	96.1	147	96.1	147	96.1	147	96.1	143	93.5	144	94.1	145	94.8	146	95.4	145	94.8
Conwy LA	282	269	95.4	269	95.4	269	95.4	269	95.4	269	95.4	258	91.5	266	94.3	263	93.3	261	92.6	258	91.5
Denbighshire LA	274	269	98.2	269	98.2	269	98.2	269	98.2	269	98.2	258	94.2	268	97.8	266	97.1	260	94.9	260	94.9
Flintshire LA	399	393	98.5	393	98.5	393	98.5	393	98.5	393	98.5	388	97.2	393	98.5	389	97.5	390	97.7	388	97.2
Gwynedd LA	273	265	97.1	265	97.1	265	97.1	265	97.1	265	97.1	258	94.5	259	94.9	259	94.9	259	94.9	256	93.8
Wrexham LA	396	390	98.5	390	98.5	390	98.5	389	98.2	390	98.5	383	96.7	386	97.5	386	97.5	385	97.2	381	96.2
Health Board Total	1777	1733	97.5	1733	97.5	1733	97.5	1732	97.5	1733	97.5	1688	95.0	1716	96.6	1708	96.1	1701	95.7	1688	95.0
Cardiff and Vale University HB																					
Cardiff LA	1088	1048	96.3	1048	96.3	1048	96.3	1048	96.3	1048	96.3	1021	93.8	1020	93.8	1019	93.7	1015	93.3	1008	92.6
Vale of Glamorgan LA	357	347	97.2	347	97.2	347	97.2	347	97.2	347	97.2	337	94.4	347	97.2	342	95.8	339	95.0	335	93.8
Health Board Total	1445	1395	96.5	1395	96.5	1395	96.5	1395	96.5	1395	96.5	1358	94.0	1367	94.6	1361	94.2	1354	93.7	1343	92.9
Cwm Taf University HB																					
Merthyr Tydfil LA	189	185	97.9	185	97.9	185	97.9	185	97.9	185	97.9	180	95.2	184	97.4	182	96.3	182	96.3	180	95.2
Rhondda Cynon Taf LA	674	670	99.4	671	99.6	670	99.4	671	99.6	670	99.4	659	97.8	667	99.0	665	98.7	661	98.1	661	98.1
Health Board Total	863	855	99.1	856	99.2	855	99.1	856	99.2	855	99.1	839	97.2	851	98.6	847	98.1	843	97.7	841	97.5
Hywel Dda University HB																					
Carmarthenshire LA	466	450	96.6	450	96.6	450	96.6	450	96.6	450	96.6	436	93.6	455	97.6	436	93.6	441	94.6	431	92.5
Ceredigion LA	183	174	95.1	174	95.1	174	95.1	174	95.1	174	95.1	170	92.9	173	94.5	174	95.1	172	94.0	172	94.0
Pembrokeshire LA	301	290	96.3	290	96.3	290	96.3	290	96.3	290	96.3	279	92.7	292	97.0	287	95.3	283	94.0	281	93.4
Health Board Total	950	914	96.2	914	96.2	914	96.2	914	96.2	914	96.2	885	93.2	920	96.8	897	94.4	896	94.3	884	93.1
Powys Teaching HB	330	324	98.2	324	98.2	324	98.2	324	98.2	324	98.2	318	96.4	322	97.6	322	97.6	320	97.0	319	96.7
Unknown	4	4	100.0	4	100.0	4	100.0	4	100.0	4	100.0	4	100.0	4	100.0	4	100.0	4	100.0	4	100.0
Wales Total	8399	8175	97.3	8176	97.3	8175	97.3	8173	97.3	8173	97.3	7965	94.8	8103	96.5	8043	95.8	8005	95.3	7942	94.6

¹ Uptake of a completed one dose primary course of MenC vaccination.

² Full primary two dose course of pneumococcal conjugate vaccine.

³ Final (booster) dose of pneumococcal conjugate vaccine.

Table 5. Vaccine uptake in children reaching their 4th birthday between 01/04/17 and 30/06/17 and resident on 30/06/17. The proportion of children who have received all of these vaccines by their 4th birthday is also presented.

Area	Resident children		4 in 1 Preschool Booster ¹		HibMenC		MMR dose 2		Up to date in schedule ²	
	(n)	(n)	(%)	(n)	(%)	(n)	(%)	(n)	(%)	
Abertawe Bro Morgannwg University HB										
Bridgend LA	376	341	90.7	355	94.4	335	89.1	329	87.5	
Neath Port Talbot LA	350	316	90.3	340	97.1	308	88.0	307	87.7	
Swansea LA	654	580	88.7	619	94.6	570	87.2	564	86.2	
Health Board Total	1380	1237	89.6	1314	95.2	1213	87.9	1200	87.0	
Aneurin Bevan University HB										
Blaenau Gwent LA	184	121	65.8	178	96.7	119	64.7	119	64.7	
Caerphilly LA	483	410	84.9	467	96.7	408	84.5	404	83.6	
Monmouthshire LA	214	194	90.7	197	92.1	187	87.4	185	86.4	
Newport LA	519	379	73.0	473	91.1	371	71.5	357	68.8	
Torfaen LA	259	222	85.7	251	96.9	221	85.3	218	84.2	
Health Board Total	1659	1326	79.9	1566	94.4	1306	78.7	1283	77.3	
Betsi Cadwaladr University HB										
Anglesey LA	186	177	95.2	181	97.3	170	91.4	170	91.4	
Conwy LA	262	239	91.2	253	96.6	234	89.3	233	88.9	
Denbighshire LA	261	225	86.2	250	95.8	222	85.1	219	83.9	
Flintshire LA	397	372	93.7	385	97.0	369	92.9	367	92.4	
Gwynedd LA	282	252	89.4	267	94.7	249	88.3	248	87.9	
Wrexham LA	409	379	92.7	384	93.9	367	89.7	363	88.8	
Health Board Total	1797	1644	91.5	1720	95.7	1611	89.6	1600	89.0	
Cardiff and Vale University HB										
Cardiff LA	1042	916	87.9	952	91.4	885	84.9	860	82.5	
Vale of Glamorgan LA	358	321	89.7	338	94.4	310	86.6	306	85.5	
Health Board Total	1400	1237	88.4	1290	92.1	1195	85.4	1166	83.3	
Cwm Taf University HB										
Merthyr Tydfil LA	169	161	95.3	162	95.9	159	94.1	156	92.3	
Rhondda Cynon Taf LA	699	625	89.4	673	96.3	621	88.8	612	87.6	
Health Board Total	868	786	90.6	835	96.2	780	89.9	768	88.5	
Hywel Dda University HB										
Carmarthenshire LA	464	399	86.0	429	92.5	388	83.6	379	81.7	
Ceredigion LA	145	133	91.7	129	89.0	127	87.6	124	85.5	
Pembrokeshire LA	294	236	80.3	255	86.7	227	77.2	224	76.2	
Health Board Total	903	768	85.0	813	90.0	742	82.2	727	80.5	
Powys Teaching HB	297	272	91.6	274	92.3	264	88.9	260	87.5	
Unknown	24	20	83.3	22	91.7	20	83.3	20	83.3	
Wales Total	8328	7290	87.5	7834	94.1	7131	85.6	7024	84.3	

¹ Uptake of acellular pertussis used as proxy

² Completed "4 in 1" preschool booster, the Hib/ MenC booster and second MMR dose by four years of age.

Table 6. Vaccine uptake in children reaching their 5th birthday between 01/04/17 and 30/06/17 and resident on 30/06/17. The proportion of children who have received all of these vaccines by their 5th birthday is also presented.

Area	Resident children	4 in 1 Preschool Booster ¹		HibMenCb		MMR dose 2		Up to date in schedule ²	
	(n)	(n)	(%)	(n)	(%)	(n)	(%)	(n)	(%)
<u>Abertawe Bro Morgannwg University HB</u>									
Bridgend LA	410	379	92.4	380	92.7	376	91.7	362	88.3
Neath Port Talbot LA	386	364	94.3	365	94.6	363	94.0	346	89.6
Swansea LA	685	630	92.0	632	92.3	626	91.4	602	87.9
Health Board Total	1481	1373	92.7	1377	93.0	1365	92.2	1310	88.5
<u>Aneurin Bevan University HB</u>									
Blaenau Gwent LA	183	167	91.3	177	96.7	164	89.6	164	89.6
Caerphilly LA	525	467	89.0	498	94.9	465	88.6	457	87.0
Monmouthshire LA	242	225	93.0	220	90.9	213	88.0	208	86.0
Newport LA	498	435	87.3	449	90.2	418	83.9	407	81.7
Torfaen LA	278	256	92.1	267	96.0	251	90.3	249	89.6
Health Board Total	1726	1550	89.8	1611	93.3	1511	87.5	1485	86.0
<u>Betsi Cadwaladr University HB</u>									
Anglesey LA	208	205	98.6	198	95.2	198	95.2	197	94.7
Conwy LA	303	290	95.7	282	93.1	281	92.7	275	90.8
Denbighshire LA	259	248	95.8	245	94.6	239	92.3	238	91.9
Flintshire LA	438	425	97.0	394	90.0	394	90.0	389	88.8
Gwynedd LA	345	328	95.1	323	93.6	319	92.5	315	91.3
Wrexham LA	405	393	97.0	381	94.1	379	93.6	374	92.3
Health Board Total	1958	1889	96.5	1823	93.1	1810	92.4	1788	91.3
<u>Cardiff and Vale University HB</u>									
Cardiff LA	1162	1064	91.6	1053	90.6	1010	86.9	978	84.2
Vale of Glamorgan LA	386	352	91.2	371	96.1	343	88.9	340	88.1
Health Board Total	1548	1416	91.5	1424	92.0	1353	87.4	1318	85.1
<u>Cwm Taf University HB</u>									
Merthyr Tydfil LA	176	165	93.8	165	93.8	160	90.9	160	90.9
Rhondda Cynon Taf LA	689	636	92.3	653	94.8	618	89.7	610	88.5
Health Board Total	865	801	92.6	818	94.6	778	89.9	770	89.0
<u>Hywel Dda University HB</u>									
Cardemare LA	502	453	90.2	453	90.2	438	87.3	427	85.1
Ceredigion LA	200	189	94.5	186	93.0	183	91.5	181	90.5
Pembrokeshire LA	319	296	92.8	293	91.8	284	89.0	278	87.1
Health Board Total	1021	938	91.9	932	91.3	905	88.6	886	86.8
<u>Powys Teaching HB</u>	297	275	92.6	263	88.6	256	86.2	255	85.9
Unknown	14	14	100.0	14	100.0	14	100.0	14	100.0
Wales Total	8910	8256	92.7	8262	92.7	7992	89.7	7826	87.8

¹ Uptake of acellular pertussis used as proxy

² Completed "4 in 1" preschool booster, the Hib/ MenC booster and second MMR dose by five years of age.

Table 7. Vaccine uptake in children reaching their 5th birthday between 01/04/17 and 30/06/17 and resident on 30/06/17.

Area	Resident children	D3	T3	P3	Po3	Hib3	MenC ¹	PCVf ²	HibMenC	MMR1	MMR2	D4	T4	aP	Po4
	(n)	(n) (%)	(n) (%)	(n) (%)	(n) (%)	(n) (%)	(n) (%)	(n) (%)	(n) (%)	(n) (%)	(n) (%)	(n) (%)	(n) (%)	(n) (%)	(n) (%)
Abertawe Bro Morgannwg University HB															
Bridgend LA	410	389 94.9	389 94.9	389 94.9	389 94.9	389 94.9	383 93.4	379 92.4	380 92.7	397 96.8	376 91.7	379 92.4	379 92.4	379 92.4	379 92.4
Neath Port Talbot LA	386	370 95.9	370 95.9	370 95.9	370 95.9	370 95.9	366 94.8	358 92.7	365 94.6	377 97.7	363 94.0	364 94.3	364 94.3	364 94.3	364 94.3
Swansea LA	685	638 93.1	638 93.1	638 93.1	637 93.0	638 93.1	620 90.5	631 92.1	632 92.3	657 95.9	626 91.4	630 92.0	630 92.0	630 92.0	631 92.1
Health Board Total	1481	1397 94.3	1397 94.3	1397 94.3	1396 94.3	1397 94.3	1369 92.4	1368 92.4	1377 93.0	1431 96.6	1365 92.2	1373 92.7	1373 92.7	1373 92.7	1374 92.8
Aneurin Bevan University HB															
Blaenau Gwent LA	183	179 97.8	179 97.8	179 97.8	179 97.8	179 97.8	177 96.7	175 95.6	177 96.7	181 98.9	164 89.6	167 91.3	167 91.3	167 91.3	167 91.3
Caerphilly LA	525	507 96.6	507 96.6	507 96.6	506 96.4	506 96.4	500 95.2	502 95.6	498 94.9	510 97.1	465 88.6	467 89.0	467 89.0	467 89.0	467 89.0
Monmouthshire LA	242	222 91.7	222 91.7	222 91.7	222 91.7	222 91.7	219 90.5	216 89.3	220 90.9	233 96.3	213 88.0	225 93.0	225 93.0	225 93.0	225 93.0
Newport LA	498	464 93.2	464 93.2	464 93.2	464 93.2	464 93.2	451 90.6	455 91.4	449 90.2	475 95.4	418 83.9	435 87.3	435 87.3	435 87.3	435 87.3
Torfaen LA	278	271 97.5	271 97.5	271 97.5	271 97.5	271 97.5	270 97.1	265 95.3	267 96.0	271 97.5	251 90.3	256 92.1	256 92.1	256 92.1	256 92.1
Health Board Total	1726	1643 95.2	1643 95.2	1643 95.2	1642 95.1	1642 95.1	1617 93.7	1613 93.5	1611 93.3	1670 96.8	1511 87.5	1550 89.8	1550 89.8	1550 89.8	1550 89.8
Betsi Cadwaladr University HB															
Anglesey LA	208	198 95.2	198 95.2	198 95.2	198 95.2	198 95.2	197 94.7	197 94.7	198 95.2	207 99.5	198 95.2	205 98.6	205 98.6	205 98.6	205 98.6
Conwy LA	303	286 94.4	286 94.4	286 94.4	286 94.4	286 94.4	278 91.7	276 91.1	282 93.1	298 98.3	281 92.7	290 95.7	290 95.7	290 95.7	290 95.7
Denbighshire LA	259	247 95.4	247 95.4	247 95.4	247 95.4	247 95.4	243 93.8	239 92.3	245 94.6	253 97.7	239 92.3	248 95.8	248 95.8	248 95.8	248 95.8
Flintshire LA	438	400 91.3	400 91.3	400 91.3	399 91.1	399 91.1	393 89.7	393 89.7	394 90.0	428 97.7	394 90.0	425 97.0	425 97.0	425 97.0	425 97.0
Gwynedd LA	345	326 94.5	326 94.5	326 94.5	326 94.5	327 94.8	318 92.2	315 91.3	323 93.6	332 96.2	319 92.5	328 95.1	328 95.1	328 95.1	328 95.1
Wrexham LA	405	386 95.3	386 95.3	386 95.3	386 95.3	386 95.3	380 93.8	379 93.6	381 94.1	400 98.8	379 93.6	393 97.0	393 97.0	393 97.0	393 97.0
Health Board Total	1958	1843 94.1	1843 94.1	1843 94.1	1842 94.1	1843 94.1	1809 92.4	1799 91.9	1823 93.1	1918 98.0	1810 92.4	1889 96.5	1889 96.5	1889 96.5	1889 96.5
Cardiff and Vale University HB															
Cardiff LA	1162	1086 93.5	1086 93.5	1086 93.5	1085 93.4	1082 93.1	1036 89.2	1048 90.2	1053 90.6	1124 96.7	1010 86.9	1064 91.6	1064 91.6	1064 91.6	1064 91.6
Vale of Glamorgan LA	386	373 96.6	373 96.6	373 96.6	373 96.6	373 96.6	365 94.6	368 95.3	371 96.1	376 97.4	343 88.9	352 91.2	352 91.2	352 91.2	352 91.2
Health Board Total	1548	1459 94.3	1459 94.3	1459 94.3	1458 94.2	1455 94.0	1401 90.5	1416 91.5	1424 92.0	1500 96.9	1353 87.4	1416 91.5	1416 91.5	1416 91.5	1416 91.5
Cwm Taf University HB															
Merthyr Tydfil LA	176	168 95.5	168 95.5	168 95.5	167 94.9	168 95.5	165 93.8	166 94.3	165 93.8	169 96.0	160 90.9	165 93.8	165 93.8	165 93.8	165 93.8
Rhondda Cynon Taf LA	689	662 96.1	662 96.1	662 96.1	662 96.1	662 96.1	655 95.1	656 95.2	653 94.8	678 98.4	618 89.7	636 92.3	636 92.3	636 92.3	636 92.3
Health Board Total	865	830 96.0	830 96.0	830 96.0	829 95.8	830 96.0	820 94.8	822 95	818 94.6	847 97.9	778 89.9	801 92.6	801 92.6	801 92.6	801 92.6
Hywel Dda University HB															
Carmarthenshire LA	502	467 93.0	467 93.0	467 93.0	468 93.2	467 93.0	462 92.0	453 90.2	453 90.2	482 96.0	438 87.3	453 90.2	453 90.2	453 90.2	453 90.2
Ceredigion LA	200	186 93.0	186 93.0	186 93.0	186 93.0	186 93.0	183 91.5	187 93.5	186 93.0	192 96.0	183 91.5	189 94.5	189 94.5	189 94.5	189 94.5
Pembrokeshire LA	319	304 95.3	304 95.3	304 95.3	304 95.3	303 95.0	291 91.2	293 91.8	293 91.8	310 97.2	284 89.0	296 92.8	296 92.8	296 92.8	296 92.8
Health Board Total	1021	957 93.7	957 93.7	957 93.7	958 93.8	956 93.6	936 91.7	933 91.4	932 91.3	984 96.4	905 88.6	938 91.9	938 91.9	938 91.9	938 91.9
Powys Teaching HB	297	268 90.2	268 90.2	268 90.2	268 90.2	268 90.2	264 88.9	262 88.2	263 88.6	283 95.3	256 86.2	275 92.6	275 92.6	275 92.6	275 92.6
Unknown	14	13 92.9	13 92.9	13 92.9	13 92.9	13 92.9	12 85.7	14 100	14 100.0	14 100.0	14 100.0	14 100.0	14 100.0	14 100.0	14 100.0
Wales Total	8910	8410 94.4	8410 94.4	8410 94.4	8406 94.3	8404 94.3	8228 92.3	8227 92.3	8262 92.7	8647 97.0	7992 89.7	8256 92.7	8256 92.7	8256 92.7	8257 92.7

¹ Completed three dose course, or two dose course with the second delivered after 115 days of age

² Final (booster) dose of pneumococcal conjugate vaccine

Table 8. Uptake of HPV vaccine in girls reaching 13, 14 and 15 years of age between 01/09/16 and 31/08/17 and resident on 30/06/17.

Area	13 years (2016-17 School Year 8) ¹			14 years (2016-17 School Year 9) ¹					15 years (2016-17 School Year 10) ²				
	Resident girls (n)	HPV 1 dose (n)	HPV 1 dose (%)	Resident girls (n)	HPV 1 dose (n)	HPV 1 dose (%)	HPV 2 dose (n)	HPV 2 dose (%)	Resident girls (n)	HPV 1 dose (n)	HPV 1 dose (%)	HPV 2 dose (n)	HPV 2 dose (%)
Abertawe Bro Morgannwg University HB													
Bridgend LA	815	725	89.0	781	729	93.3	673	86.2	741	695	93.8	672	90.7
Neath Port Talbot LA	743	673	90.6	698	647	92.7	591	84.7	718	680	94.7	656	91.4
Swansea LA	1225	1079	88.1	1243	1132	91.1	1023	82.3	1224	1150	94.0	1123	91.7
Health Board Total	2783	2477	89.0	2722	2508	92.1	2287	84.0	2683	2525	94.1	2451	91.4
Aneurin Bevan University HB													
Blaenau Gwent LA	371	22	5.9	322	285	88.5	37	11.5	373	352	94.4	338	90.6
Caerphilly LA	1017	260	25.6	983	830	84.4	228	23.2	947	891	94.1	838	88.5
Monmouthshire LA	521	249	47.8	546	451	82.6	196	35.9	511	412	80.6	386	75.5
Newport LA	891	350	39.3	905	741	81.9	251	27.7	928	799	86.1	742	80.0
Torfaen LA	484	94	19.4	480	419	87.3	77	16.0	490	448	91.4	424	86.5
Health Board Total	3284	975	29.7	3236	2726	84.2	789	24.4	3249	2902	89.3	2728	84.0
Betsi Cadwaladr University HB													
Anglesey LA	344	290	84.3	348	310	89.1	274	78.7	362	327	90.3	295	81.5
Conwy LA	565	491	86.9	546	486	89.0	441	80.8	540	495	91.7	467	86.5
Denbighshire LA	497	412	82.9	467	422	90.4	378	80.9	488	441	90.4	422	86.5
Flintshire LA	802	682	85.0	728	650	89.3	619	85.0	796	741	93.1	683	85.8
Gwynedd LA	545	467	85.7	554	497	89.7	464	83.8	554	594	107.2	483	87.2
Wrexham LA	708	581	82.1	685	586	85.5	509	74.3	650	582	89.5	548	84.3
Health Board Total	3461	2923	84.5	3328	2951	88.7	2685	80.7	3390	3180	93.8	2898	85.5
Cardiff and Vale University HB													
Cardiff LA	1911	1567	82.0	1862	1577	84.7	1415	76.0	1730	1491	86.2	1407	81.3
Vale of Glamorgan LA	729	639	87.7	701	625	89.2	562	80.2	661	603	91.2	562	85.0
Health Board Total	2640	2206	83.6	2563	2202	85.9	1977	77.1	2391	2094	87.6	1969	82.4
Cwm Taf University HB													
Merthyr Tydfil LA	323	275	85.1	332	305	91.9	270	81.3	287	267	93.0	263	91.6
Rhondda Cynon Taf LA	1299	1004	77.3	1382	1289	93.3	977	70.7	1226	1168	95.3	1148	93.6
Health Board Total	1622	1279	78.9	1714	1594	93.0	1247	72.8	1513	1435	94.8	1411	93.3
Hywel Dda University HB													
Carmarthenshire LA	954	850	89.1	984	895	91.0	826	83.9	935	858	91.8	845	90.4
Ceredigion LA	322	273	84.8	301	256	85.0	246	81.7	305	269	88.2	265	86.9
Pembrokeshire LA	640	537	83.9	617	520	84.3	483	78.3	537	459	85.5	444	82.7
Health Board Total	1916	1660	86.6	1902	1671	87.9	1555	81.8	1777	1586	89.3	1554	87.5
Powys Teaching HB	653	527	80.7	654	513	78.4	447	68.3	619	529	85.5	506	81.7
Unknown	54	43	79.6	47	40	85.1	28	59.6	53	46	86.8	42	79.2
Wales Total	16413	12090	73.7	16166	14205	87.9	11015	68.1	15675	14297	91.2	13559	86.5

¹ Timings of HPV immunisation sessions vary between HBs and may not have been complete at the time this report was produced.

² Represents the first school year 8 group (2014-15) to receive the two dose HPV schedule.

Table 9. Uptake of Men ACWY vaccine in teenagers reaching 14, 15, 16 and 17 years of age between 01/09/16 and 31/08/17 and resident on 30/06/17.

Area	14 years (2016-17 School Year 9) ¹			15 years (2016-17 School Year 10)			16 years (2016-17 School Year 11) ¹			17 years (2016-17 School Year 12)		
	Resident children (n)	MenACWY (n)	(%)	Resident children (n)	MenACWY (n)	(%)	Resident children (n)	MenACWY (n)	(%)	Resident children	MenACWY (n)	(%)
Abertawe Bro Morgannwg University HB												
Bridgend LA	1561	1384	88.7	1520	1373	90.3	1675	1439	85.9	1550	1350	87.1
Neath Port Talbot LA	1424	1265	88.8	1464	1343	91.7	1523	1291	84.8	1514	1276	84.3
Swansea LA	2609	2293	87.9	2501	2221	88.8	2559	2166	84.6	2652	2187	82.5
Health Board Total	5594	4942	88.3	5485	4937	90.0	5757	4896	85.0	5716	4813	84.2
Aneurin Bevan University HB												
Blaenau Gwent LA	688	563	81.8	697	626	89.8	736	603	81.9	766	605	79.0
Caerphilly LA	2093	1657	79.2	2023	1735	85.8	2029	1645	81.1	2125	1631	76.8
Monmouthshire LA	1092	860	78.8	1038	796	76.7	1104	816	73.9	1157	802	69.3
Newport LA	1868	1403	75.1	1870	1476	78.9	1796	1370	76.3	1922	1364	71.0
Torfaen LA	967	770	79.6	1015	883	87.0	1063	858	80.7	1007	755	75.0
Health Board Total	6708	5253	78.3	6643	5516	83.0	6728	5292	78.7	6977	5157	73.9
Betsi Cadwaladr University HB												
Anglesey LA	717	562	78.4	726	595	82.0	718	521	72.6	700	531	75.9
Conwy LA	1152	993	86.2	1121	955	85.2	1261	980	77.7	1303	985	75.6
Denbighshire LA	999	833	83.4	1048	835	79.7	1137	900	79.2	1103	784	71.1
Flintshire LA	1506	1044	69.3	1583	1247	78.8	1613	1236	76.6	1636	1263	77.2
Gwynedd LA	1181	937	79.3	1173	967	82.4	1238	904	73.0	1254	983	78.4
Wrexham LA	1431	1072	74.9	1318	1068	81.0	1445	1067	73.8	1537	1150	74.8
Health Board Total	6986	5441	77.9	6969	5667	81.3	7412	5608	75.7	7533	5696	75.6
Cardiff and Vale University HB												
Cardiff LA	3788	2620	69.2	3674	1961	53.4	3765	2845	75.6	3705	2784	75.1
Vale of Glamorgan LA	1474	1127	76.5	1346	841	62.5	1366	985	72.1	1482	1135	76.6
Health Board Total	5262	3747	71.2	5020	2802	55.8	5131	3830	74.6	5187	3919	75.6
Cwm Taf University HB												
Merthyr Tydfil LA	662	572	86.4	624	566	90.7	640	546	85.3	714	608	85.2
Rhondda Cynon Taf LA	2802	2435	86.9	2525	2316	91.7	2638	2263	85.8	2637	2261	85.7
Health Board Total	3464	3007	86.8	3149	2882	91.5	3278	2809	85.7	3351	2869	85.6
Hywel Dda University HB												
Carmarthenshire LA	2016	1758	87.2	2013	1781	88.5	1994	1656	83.0	1991	1640	82.4
Ceredigion LA	635	547	86.1	604	522	86.4	641	540	84.2	667	566	84.9
Pembrokeshire LA	1214	939	77.3	1180	903	76.5	1222	841	68.8	1272	929	73.0
Health Board Total	3865	3244	83.9	3797	3206	84.4	3857	3037	78.7	3930	3135	79.8
Powys Teaching HB	1338	1076	80.4	1289	1069	82.9	1320	1060	80.3	1405	1080	76.9
Unknown	100	72	72.0	101	82	81.2	147	108	73.5	167	126	75.4
Wales Total	33317	26782	80.4	32453	26161	80.6	33630	26640	79.2	34266	26795	78.2

¹ Timings of MenACWY immunisation sessions vary between HBs and may not have been complete at the time this report was produced.

Table 10. MMR, Td/IPV, MenC and MenACWY vaccine uptake in children reaching their 14th birthday between 01/09/16 and 31/08/17 and resident on 30/06/17 (2016-17 school year 9), with breakdown of MMR1 and MMR2 coverage by sex.

Area	Resident children		MMR1		MMR2		Teenage 3 in 1 booster ^{1,2}		MenACWY ²		Resident girls		MMR1 (girls)		MMR2 (girls)		Resident boys		MMR1 (boys)		MMR2 (boys)	
	(n)	(n)	(%)	(n)	(%)	(n)	(%)	(n)	(%)	(n)	(n)	(%)	(n)	(%)	(n)	(%)	(n)	(n)	(%)	(n)	(%)	
Abertawe Bro Morgannwg University HB	(n)	(n)	(%)	(n)	(%)	(n)	(%)	(n)	(%)	(n)	(n)	(%)	(n)	(%)	(n)	(%)	(n)	(n)	(%)	(n)	(%)	
Bridgend LA	1561	1465	93.9	1378	88.3	1371	87.8	1384	88.7	781	737	94.4	697	89.2	780	728	93.3	681	87.3			
Neath Port Talbot LA	1424	1363	95.7	1282	90.0	1246	87.5	1265	88.8	698	674	96.6	643	92.1	726	689	94.9	639	88.0			
Swansea LA	2609	2368	90.8	2233	85.6	2289	87.7	2293	87.9	1243	1117	89.9	1060	85.3	1366	1251	91.6	1173	85.9			
Health Board Total	5594	5196	92.9	4893	87.5	4906	87.7	4942	88.3	2722	2528	92.9	2400	88.2	2872	2668	92.9	2493	86.8			
Aneurin Bevan University HB																						
Blaenau Gwent LA	688	650	94.5	622	90.4	567	82.4	563	81.8	322	305	94.7	292	90.7	366	345	94.3	330	90.2			
Caerphilly LA	2093	2002	95.7	1908	91.2	1661	79.4	1657	79.2	983	938	95.4	898	91.4	1109	1064	95.9	1010	91.1			
Monmouthshire LA	1092	964	88.3	906	83.0	862	78.9	860	78.8	546	476	87.2	440	80.6	546	488	89.4	466	85.3			
Newport LA	1868	1692	90.6	1579	84.5	1409	75.4	1403	75.1	905	827	91.4	775	85.6	961	865	90.0	804	83.7			
Torfaen LA	967	904	93.5	861	89.0	773	79.9	770	79.6	480	455	94.8	431	89.8	487	449	92.2	430	88.3			
Health Board Total	6708	6212	92.6	5876	87.6	5272	78.6	5253	78.3	3236	3001	92.7	2836	87.6	3469	3211	92.6	3040	87.6			
Betsi Cadwaladr University HB																						
Anglesey LA	717	678	94.6	649	90.5	558	77.8	562	78.4	348	332	95.4	318	91.4	369	346	93.8	331	89.7			
Conwy LA	1152	1075	93.3	1040	90.3	988	85.8	993	86.2	546	513	94.0	498	91.2	603	559	92.7	539	89.4			
Denbighshire LA	999	925	92.6	881	88.2	822	82.3	833	83.4	467	431	92.3	411	88.0	531	494	93.0	470	88.5			
Flintshire LA	1506	1424	94.6	1366	90.7	1166	77.4	1044	69.3	728	690	94.8	660	90.7	778	734	94.3	706	90.7			
Gwynedd LA	1181	1135	96.1	1096	92.8	917	77.6	937	79.3	554	536	96.8	523	94.4	627	599	95.5	573	91.4			
Wrexham LA	1431	1340	93.6	1298	90.7	1061	74.1	1072	74.9	685	641	93.6	616	89.9	746	699	93.7	682	91.4			
Health Board Total	6986	6577	94.1	6330	90.6	5512	78.9	5441	77.9	3328	3143	94.4	3026	90.9	3654	3431	93.9	3301	90.3			
Cardiff and Vale University HB																						
Cardiff LA	3788	3494	92.2	3241	85.6	2611	68.9	2620	69.2	1862	1731	93.0	1617	86.8	1926	1763	91.5	1624	84.3			
Vale of Glamorgan LA	1474	1384	93.9	1308	88.7	1128	76.5	1127	76.5	701	654	93.3	611	87.2	773	730	94.4	697	90.2			
Health Board Total	5262	4878	92.7	4549	86.5	3739	71.1	3747	71.2	2563	2385	93.1	2228	86.9	2699	2493	92.4	2321	86.0			
Cwm Taf University HB																						
Merthyr Tydfil LA	662	620	93.7	585	88.4	571	86.3	572	86.4	332	316	95.2	302	91.0	330	304	92.1	283	85.8			
Rhondda Cynon Taf LA	2802	2660	94.9	2533	90.4	2307	82.3	2435	86.9	1382	1322	95.7	1271	92.0	1420	1338	94.2	1262	88.9			
Health Board Total	3464	3280	94.7	3118	90.0	2878	83.1	3007	86.8	1714	1638	95.6	1573	91.8	1750	1642	93.8	1545	88.3			
Hywel Dda University HB																						
Carmarthenshire LA	2016	1854	92.0	1802	89.4	1756	87.1	1758	87.2	984	907	92.2	885	89.9	1032	947	91.8	917	88.9			
Ceredigion LA	635	596	93.9	569	89.6	547	86.1	547	86.1	301	282	93.7	268	89.0	334	314	94.0	301	90.1			
Pembrokeshire LA	1214	1132	93.2	1060	87.3	935	77.0	939	77.3	617	577	93.5	539	87.4	597	555	93.0	521	87.3			
Health Board Total	3865	3582	92.7	3431	88.8	3238	83.8	3244	83.9	1902	1766	92.8	1692	89.0	1963	1816	92.5	1739	88.6			
Powys Teaching HB	1338	1155	86.3	1051	78.6	1069	79.9	1076	80.4	654	563	86.1	516	78.9	684	592	86.5	535	78.2			
Unknown	100	82	82.0	77	77.0	72	72.0	72	72.0	47	43	91.5	39	83.0	53	39	73.6	38	71.7			
Wales Total	33317	30962	92.9	29325	88.0	26686	80.1	26782	80.4	16166	15067	93.2	14310	88.5	17144	15892	92.7	15012	87.6			

¹ Teenage booster dose of diphtheria, tetanus and polio (diphtheria used as proxy)

² Timings of immunisation sessions vary between HBs and may not have been complete at the time this report was produced.

Table 11. MMR, Td/IPV, MenC and MenACWY vaccine uptake in children reaching their 15th birthday between 01/09/16 and 31/08/17 and resident on 30/06/17 (2016-17 school year 10), with breakdown of MMR1 and MMR2 coverage by sex

Area	Resident children		Teenage 3 in 1 booster ¹							Resident girls					Resident boys				
	(n)	MMR1 (%)	MMR2 (%)	(n)	MMR1 (%)	MMR2 (%)	booster ¹ (%)	MenACWY (%)	(n)	MMR1 (girls) (%)	MMR2 (girls) (%)	(n)	MMR1 (boys) (%)	MMR2 (boys) (%)	(n)	MMR1 (boys) (%)	MMR2 (boys) (%)		
Abertawe Bro Morgannwg University HB	(n)	(n)	(%)	(n)	(%)	(n)	(%)	(n)	(%)	(n)	(n)	(%)	(n)	(%)	(n)	(n)	(%)	(n)	(%)
Bridgend LA	1520	1424	93.7	1329	87.4	1366	89.9	1373	90.3	741	698	94.2	656	88.5	779	726	93.2	673	86.4
Neath Port Talbot LA	1464	1354	92.5	1250	85.4	1322	90.3	1343	91.7	718	677	94.3	626	87.2	746	677	90.8	624	83.6
Swansea LA	2501	2287	91.4	2128	85.1	2212	88.4	2221	88.8	1224	1130	92.3	1054	86.1	1277	1157	90.6	1074	84.1
Health Board Total	5485	5065	92.3	4707	85.8	4900	89.3	4937	90.0	2683	2505	93.4	2336	87.1	2802	2560	91.4	2371	84.6
Aneurin Bevan University HB																			
Blaenau Gwent LA	697	660	94.7	627	90.0	624	89.5	626	89.8	373	353	94.6	340	91.2	324	307	94.8	287	88.6
Caerphilly LA	2023	1945	96.1	1851	91.5	1746	86.3	1735	85.8	947	910	96.1	862	91.0	1076	1035	96.2	989	91.9
Monmouthshire LA	1038	877	84.5	813	78.3	797	76.8	796	76.7	511	430	84.1	405	79.3	526	447	85.0	408	77.6
Newport LA	1870	1710	91.4	1587	84.9	1490	79.7	1476	78.9	928	849	91.5	798	86.0	940	860	91.5	789	83.9
Torfaen LA	1015	953	93.9	903	89.0	883	87.0	883	87.0	490	459	93.7	437	89.2	525	494	94.1	466	88.8
Health Board Total	6643	6145	92.5	5781	87.0	5540	83.4	5516	83.0	3249	3001	92.4	2842	87.5	3391	3143	92.7	2939	86.7
Betsi Cadwaladr University HB																			
Anglesey LA	726	684	94.2	667	91.9	603	83.1	595	82.0	362	340	93.9	333	92.0	364	344	94.5	334	91.8
Conwy LA	1121	1044	93.1	997	88.9	948	84.6	955	85.2	540	505	93.5	481	89.1	580	538	92.8	515	88.8
Denbighshire LA	1048	964	92.0	921	87.9	853	81.4	835	79.7	488	442	90.6	424	86.9	560	522	93.2	497	88.8
Flintshire LA	1583	1487	93.9	1420	89.7	1260	79.6	1247	78.8	796	746	93.7	716	89.9	787	741	94.2	704	89.5
Gwynedd LA	1173	1108	94.5	1072	91.4	962	82.0	967	82.4	554	526	94.9	509	91.9	619	582	94.0	563	91.0
Wrexham LA	1318	1257	95.4	1235	93.7	1070	81.2	1068	81.0	650	622	95.7	616	94.8	668	635	95.1	619	92.7
Health Board Total	6969	6544	93.9	6312	90.6	5696	81.7	5667	81.3	3390	3181	93.8	3079	90.8	3578	3362	94.0	3232	90.3
Cardiff and Vale University HB																			
Cardiff LA	3674	3325	90.5	3064	83.4	2588	70.4	1961	53.4	1730	1563	90.3	1444	83.5	1943	1762	90.7	1620	83.4
Vale of Glamorgan LA	1346	1250	92.9	1179	87.6	1074	79.8	841	62.5	661	625	94.6	595	90.0	685	625	91.2	584	85.3
Health Board Total	5020	4575	91.1	4243	84.5	3662	72.9	2802	55.8	2391	2188	91.5	2039	85.3	2628	2387	90.8	2204	83.9
Cwm Taf University HB																			
Merthyr Tydfil LA	624	593	95.0	548	87.8	564	90.4	566	90.7	287	276	96.2	256	89.2	336	317	94.3	292	86.9
Rhondda Cynon Taf LA	2525	2383	94.4	2245	88.9	2306	91.3	2316	91.7	1226	1169	95.4	1110	90.5	1299	1214	93.5	1135	87.4
Health Board Total	3149	2976	94.5	2793	88.7	2870	91.1	2882	91.5	1513	1445	95.5	1366	90.3	1635	1531	93.6	1427	87.3
Hywel Dda University HB																			
Carmarthenshire LA	2013	1852	92.0	1803	89.6	1783	88.6	1781	88.5	935	859	91.9	834	89.2	1078	993	92.1	969	89.9
Ceredigion LA	604	558	92.4	533	88.2	525	86.9	522	86.4	305	285	93.4	274	89.8	299	273	91.3	259	86.6
Pembrokeshire LA	1180	1083	91.8	1016	86.1	920	78.0	903	76.5	537	498	92.7	469	87.3	643	585	91.0	547	85.1
Health Board Total	3797	3493	92.0	3352	88.3	3228	85.0	3206	84.4	1777	1642	92.4	1577	88.7	2020	1851	91.6	1775	87.9
Powys Teaching HB																			
Unknown	101	92	91.1	90	89.1	79	78.2	82	81.2	53	48	90.6	47	88.7	48	44	91.7	43	89.6
Wales Total	32453	30054	92.6	28344	87.3	27036	83.3	26161	80.6	15675	14578	93.0	13812	88.1	16772	15474	92.3	14531	86.6

¹ Teenage booster dose of diphtheria, tetanus and polio (diphtheria used as proxy)

Table 12. MMR, Td/IPV, MenC and MenACWY vaccine uptake in children reaching their 16th birthday between 01/09/16 and 31/08/17 and resident on 30/06/17 (2016-17 school year 11), with breakdown of MMR1 and MMR2 coverage by sex

Area	Resident children		Teenage 3 in 1 booster ¹							Resident girls		MMR1 (girls)		MMR2 (girls)		Resident boys		MMR1 (boys)		MMR2 (boys)	
	(n)	(n) (%)	(n)	(%)	(n)	(%)	(n)	(%)	(n)	(%)	(n)	(%)	(n)	(%)	(n)	(%)	(n)	(%)	(n)	(%)	
Abertawe Bro Morgannwg University HB																					
Bridgend LA	1675	1600 95.5	1522	90.9	1503	89.7	1439	85.9	844	803 95.1	763	90.4	831	797 95.9	759	91.3					
Neath Port Talbot LA	1523	1435 94.2	1324	86.9	1349	88.6	1291	84.8	725	697 96.1	653	90.1	798	738 92.5	671	84.1					
Swansea LA	2559	2357 92.1	2172	84.9	2222	86.8	2166	84.6	1288	1191 92.5	1112	86.3	1271	1166 91.7	1060	83.4					
Health Board Total	5757	5392 93.7	5018	87.2	5074	88.1	4896	85.0	2857	2691 94.2	2528	88.5	2900	2701 93.1	2490	85.9					
Aneurin Bevan University HB																					
Blaenau Gwent LA	736	695 94.4	665	90.4	622	84.5	603	81.9	361	337 93.4	321	88.9	375	358 95.5	344	91.7					
Caerphilly LA	2029	1966 96.9	1905	93.9	1700	83.8	1645	81.1	967	934 96.6	890	92.0	1062	1032 97.2	1015	95.6					
Monmouthshire LA	1104	951 86.1	873	79.1	841	76.2	816	73.9	526	458 87.1	431	81.9	578	493 85.3	442	76.5					
Newport LA	1796	1675 93.3	1564	87.1	1466	81.6	1370	76.3	866	810 93.5	754	87.1	929	864 93.0	809	87.1					
Torfaen LA	1063	1016 95.6	975	91.7	927	87.2	858	80.7	516	493 95.5	473	91.7	547	523 95.6	502	91.8					
Health Board Total	6728	6303 93.7	5982	88.9	5556	82.6	5292	78.7	3236	3032 93.7	2869	88.7	3491	3270 93.7	3112	89.1					
Betsi Cadwaladr University HB																					
Anglesey LA	718	679 94.6	662	92.2	608	84.7	521	72.6	357	339 95.0	328	91.9	361	340 94.2	334	92.5					
Conwy LA	1261	1151 91.3	1079	85.6	1039	82.4	980	77.7	628	576 91.7	546	86.9	633	575 90.8	533	84.2					
Denbighshire LA	1137	1045 91.9	989	87.0	992	87.2	900	79.2	549	512 93.3	486	88.5	587	533 90.8	503	85.7					
Flintshire LA	1613	1529 94.8	1467	90.9	1409	87.4	1236	76.6	793	760 95.8	732	92.3	820	769 93.8	735	89.6					
Gwynedd LA	1238	1183 95.6	1150	92.9	1090	88.0	904	73.0	600	578 96.3	562	93.7	638	605 94.8	588	92.2					
Wrexham LA	1445	1383 95.7	1331	92.1	1248	86.4	1067	73.8	709	682 96.2	651	91.8	736	701 95.2	680	92.4					
Health Board Total	7412	6970 94.0	6678	90.1	6386	86.2	5608	75.7	3636	3447 94.8	3305	90.9	3775	3523 93.3	3373	89.4					
Cardiff and Vale University HB																					
Cardiff LA	3765	3423 90.9	3179	84.4	2797	74.3	2845	75.6	1757	1613 91.8	1508	85.8	2008	1810 90.1	1671	83.2					
Vale of Glamorgan LA	1366	1278 93.6	1193	87.3	1103	80.7	985	72.1	664	622 93.7	584	88.0	702	656 93.4	609	86.8					
Health Board Total	5131	4701 91.6	4372	85.2	3900	76.0	3830	74.6	2421	2235 92.3	2092	86.4	2710	2466 91.0	2280	84.1					
Cwm Taf University HB																					
Merthyr Tydfil LA	640	604 94.4	564	88.1	588	91.9	546	85.3	305	289 94.8	271	88.9	335	315 94.0	293	87.5					
Rhondda Cynon Taf LA	2638	2522 95.6	2363	89.6	2420	91.7	2263	85.8	1284	1236 96.3	1165	90.7	1353	1286 95.0	1198	88.5					
Health Board Total	3278	3126 95.4	2927	89.3	3008	91.8	2809	85.7	1589	1525 96.0	1436	90.4	1688	1601 94.8	1491	88.3					
Hywel Dda University HB																					
Carmarthenshire LA	1994	1849 92.7	1803	90.4	1817	91.1	1656	83.0	968	912 94.2	895	92.5	1026	937 91.3	908	88.5					
Ceredigion LA	641	602 93.9	580	90.5	570	88.9	540	84.2	297	284 95.6	276	92.9	344	318 92.4	304	88.4					
Pembrokeshire LA	1222	1139 93.2	1081	88.5	991	81.1	841	68.8	553	520 94.0	491	88.8	669	619 92.5	590	88.2					
Health Board Total	3857	3590 93.1	3464	89.8	3378	87.6	3037	78.7	1818	1716 94.4	1662	91.4	2039	1874 91.9	1802	88.4					
Powys Teaching HB	1320	1178 89.2	1099	83.3	1075	81.4	1060	80.3	618	559 90.5	516	83.5	700	619 88.4	583	83.3					
Unknown	147	129 87.8	122	83.0	112	76.2	108	73.5	69	60 87.0	58	84.1	78	69 88.5	64	82.1					
Wales Total	33630	31389 93.3	29662	88.2	28489	84.7	26640	79.2	16244	15265 94.0	14466	89.1	17381	16123 92.8	15195	87.4					

¹ Teenage booster dose of diphtheria, tetanus and polio (diphtheria used as proxy)

² Timings of MenACWY immunisation sessions vary between HBs and may not have been complete at the time this report was produced.

Table 13. MMR, Td/IPV, MenC and MenACWY vaccine uptake in children reaching their 16th birthday between 01/04/17 and 30/06/17 and resident on 30/06/17, with breakdown of MMR1 and MMR2 coverage by sex

Area	Resident children					Teenage 3 in 1 booster ¹					Resident girls					Resident boys				
	(n)	MMR1 (n)	MMR1 (%)	MMR2 (n)	MMR2 (%)	(n)	(%)	MenACWY ² (n)	MenACWY ² (%)	(n)	MMR1 (girls) (n)	MMR1 (girls) (%)	MMR2 (girls) (n)	MMR2 (girls) (%)	(n)	MMR1 (boys) (n)	MMR1 (boys) (%)	MMR2 (boys) (n)	MMR2 (boys) (%)	
Abertawe Bro Morgannwg University HB	(n)	(n)	(%)	(n)	(%)	(n)	(%)	(n)	(%)	(n)	(n)	(%)	(n)	(%)	(n)	(n)	(%)	(n)	(%)	
Bridgend LA	378	362	95.8	349	92.3	338	89.4	331	87.6	198	190	96.0	182	91.9	180	172	95.6	167	92.8	
Neath Port Talbot LA	346	326	94.2	312	90.2	310	89.6	300	86.7	175	166	94.9	157	89.7	171	160	93.6	155	90.6	
Swansea LA	649	616	94.9	566	87.2	574	88.4	546	84.1	319	308	96.6	285	89.3	330	308	93.3	281	85.2	
Health Board Total	1373	1304	95.0	1227	89.4	1222	89.0	1177	85.7	692	664	96.0	624	90.2	681	640	94.0	603	88.5	
Aneurin Bevan University HB																				
Blaenau Gwent LA	194	185	95.4	174	89.7	163	84.0	155	79.9	91	85	93.4	80	87.9	103	100	97.1	94	91.3	
Caerphilly LA	490	474	96.7	459	93.7	415	84.7	392	80.0	252	240	95.2	230	91.3	238	234	98.3	229	96.2	
Monmouthshire LA	278	232	83.5	218	78.4	209	75.2	202	72.7	139	121	87.1	113	81.3	139	111	79.9	105	75.5	
Newport LA	418	394	94.3	372	89.0	340	81.3	312	74.6	205	197	96.1	185	90.2	213	197	92.5	187	87.8	
Torfaen LA	277	267	96.4	257	92.8	244	88.1	215	77.6	144	140	97.2	135	93.8	133	127	95.5	122	91.7	
Health Board Total	1657	1552	93.7	1480	89.3	1371	82.7	1276	77.0	831	783	94.2	743	89.4	826	769	93.1	737	89.2	
Betsi Cadwaladr University HB																				
Anglesey LA	181	172	95.0	169	93.4	157	86.7	135	74.6	92	87	94.6	85	92.4	89	85	95.5	84	94.4	
Conwy LA	317	294	92.7	268	84.5	272	85.8	246	77.6	148	137	92.6	128	86.5	169	157	92.9	140	82.8	
Denbighshire LA	282	252	89.4	242	85.8	249	88.3	217	77.0	146	135	92.5	131	89.7	136	117	86.0	111	81.6	
Flintshire LA	396	372	93.9	360	90.9	344	86.9	293	74.0	188	178	94.7	170	90.4	208	194	93.3	190	91.3	
Gwynedd LA	307	289	94.1	282	91.9	266	86.6	194	63.2	151	144	95.4	141	93.4	156	145	92.9	141	90.4	
Wrexham LA	331	320	96.7	309	93.4	284	85.8	231	69.8	152	147	96.7	140	92.1	179	173	96.6	169	94.4	
Health Board Total	1814	1699	93.7	1630	89.9	1572	86.7	1316	72.5	877	828	94.4	795	90.6	937	871	93.0	835	89.1	
Cardiff and Vale University HB																				
Cardiff LA	889	810	91.1	760	85.5	671	75.5	676	76.0	413	382	92.5	359	86.9	476	428	89.9	401	84.2	
Vale of Glamorgan LA	324	301	92.9	284	87.7	263	81.2	230	71.0	153	141	92.2	134	87.6	171	160	93.6	150	87.7	
Health Board Total	1213	1111	91.6	1044	86.1	934	77.0	906	74.7	566	523	92.4	493	87.1	647	588	90.9	551	85.2	
Cwm Taf University HB																				
Merthyr Tydfil LA	146	134	91.8	124	84.9	138	94.5	122	83.6	67	62	92.5	58	86.6	79	72	91.1	66	83.5	
Rhondda Cynon Taf LA	637	607	95.3	561	88.1	575	90.3	537	84.3	310	297	95.8	276	89.0	327	310	94.8	285	87.2	
Health Board Total	783	741	94.6	685	87.5	713	91.1	659	84.2	377	359	95.2	334	88.6	406	382	94.1	351	86.5	
Hywel Dda University HB																				
Carmarthenshire LA	508	462	90.9	451	88.8	465	91.5	416	81.9	253	237	93.7	232	91.7	255	225	88.2	219	85.9	
Ceredigion LA	153	146	95.4	141	92.2	138	90.2	124	81.0	64	62	96.9	62	96.9	89	84	94.4	79	88.8	
Pembrokeshire LA	327	302	92.4	287	87.8	266	81.3	218	66.7	162	152	93.8	145	89.5	165	150	90.9	142	86.1	
Health Board Total	988	910	92.1	879	89.0	869	88.0	758	76.7	479	451	94.2	439	91.6	509	459	90.2	440	86.4	
Powys Teaching HB	288	259	89.9	245	85.1	242	84.0	235	81.6	134	123	91.8	114	85.1	153	136	88.9	131	85.6	
Unknown	32	28	87.5	26	81.3	22	68.8	23	71.9	12	10	83.3	9	75.0	20	18	90.0	17	85.0	
Wales Total	8148	7604	93.3	7216	88.6	6945	85.2	6350	77.9	3968	3741	94.3	3551	89.5	4179	3863	92.4	3665	87.7	

¹ Teenage booster dose of diphtheria, tetanus and polio (diphtheria used as proxy)

² Timings of MenACWY immunisation sessions vary between HBs and may not have been complete at the time this report was produced.

Table 14. Uptake of BCG immunisation in children reaching their 1st, 2nd, 5th and 16th birthdays between 01/04/17 and 30/06/17 and resident on 30/06/17.

Area	1 yr			2 yrs			5 yrs			16 yrs		
	Resident children	BCG Immunised	(%)	Resident children	BCG Immunised	(%)	Resident children	BCG Immunised	(%)	Resident children	BCG Immunised	(%)
<u>Abertawe Bro Morgannwg University HB</u>	(n)	(n)	(%)	(n)	(n)	(%)	(n)	(n)	(%)	(n)	(n)	(%)
Bridgend LA	402	14	3.5	360	11	3.1	410	22	5.4	378	5	1.3
Neath Port Talbot LA	389	10	2.6	388	12	3.1	386	15	3.9	346	6	1.7
Swansea LA	617	65	10.5	636	82	12.9	685	73	10.7	649	39	6.0
Health Board Total	1408	89	6.3	1384	105	7.6	1481	110	7.4	1373	50	3.6
<u>Aneurin Bevan University HB</u>												
Blaenau Gwent LA	197	3	1.5	176	2	1.1	183	2	1.1	194	3	1.5
Caerphilly LA	500	9	1.8	504	12	2.4	525	23	4.4	490	7	1.4
Monmouthshire LA	185	2	1.1	210	8	3.8	242	4	1.7	278	8	2.9
Newport LA	474	66	13.9	480	79	16.5	498	65	13.1	418	33	7.9
Torfaen LA	255	4	1.6	276	2	0.7	278	3	1.1	277	2	0.7
Health Board Total	1611	84	5.2	1646	103	6.3	1726	97	5.6	1657	53	3.2
<u>Betsi Cadwaladr University HB</u>												
Anglesey LA	187	3	1.6	153	1	0.7	208	3	1.4	181	3	1.7
Conwy LA	223	12	5.4	282	7	2.5	303	8	2.6	317	8	2.5
Denbighshire LA	270	15	5.6	274	11	4.0	259	11	4.2	282	15	5.3
Flintshire LA	389	17	4.4	399	14	3.5	438	12	2.7	396	10	2.5
Gwynedd LA	303	12	4.0	273	10	3.7	345	13	3.8	307	8	2.6
Wrexham LA	383	19	5.0	396	28	7.1	405	16	4.0	331	12	3.6
Health Board Total	1755	78	4.4	1777	71	4.0	1958	63	3.2	1814	56	3.1
<u>Cardiff and Vale University HB</u>												
Cardiff LA	1136	16	1.4	1088	168	15.4	1162	239	20.6	889	127	14.3
Vale of Glamorgan LA	353	3	0.8	357	19	5.3	386	15	3.9	324	10	3.1
Health Board Total	1489	19	1.3	1445	187	12.9	1548	254	16.4	1213	137	11.3
<u>Cwm Taf Univeristy HB</u>												
Merthyr Tydfil LA	157	13	8.3	189	15	7.9	176	12	6.8	146	5	3.4
Rhondda Cynon Taf LA	671	25	3.7	674	30	4.5	689	32	4.6	637	15	2.4
Health Board Total	828	38	4.6	863	45	5.2	865	44	5.1	783	20	2.6
<u>Hywel Dda University HB</u>												
Carmarthenshire LA	469	17	3.6	466	12	2.6	502	18	3.6	508	59	11.6
Ceredigion LA	133	6	4.5	183	10	5.5	200	7	3.5	153	3	2.0
Pembrokeshire LA	285	6	2.1	301	7	2.3	319	6	1.9	327	3	0.9
Health Board Total	887	29	3.3	950	29	3.1	1021	31	3.0	988	65	6.6
<u>Powys Teaching Health Board</u>	293	7	2.4	330	9	2.7	297	5	1.7	288	4	1.4
Unknown	7	1	14.3	4	2	50.0	14	0	0.0	32	1	3.1
Wales Total	8278	345	4.2	8399	551	6.6	8910	604	6.8	8148	386	4.7

Data reflects immunisations given and recorded on the NCCHD (following notifications to local Child Health Administration Offices), may be subject to under-reporting. BCG is not a routinely scheduled immunisation.

Table 15. Uptake of hepatitis B immunisation in children receiving their first dose within seven days of birth, reaching their 1st, 2nd, 5th and 16th birthdays during 01/04/17 and 30/06/17 and resident on 30/06/17, and percentage who are recorded as completing doses 1 to 4.

Area	1yr					2yrs						5yrs					
	Resident children	Babies at risk of perinatal infection	1 dose (%)	2 doses (%)	3 doses (%)	Resident children	Babies at risk of perinatal infection	1 dose (%)	2 doses (%)	3 doses (%)	4 doses (%)	Resident children	Babies at risk of perinatal infection	1 dose (%)	2 dose (%)	3 doses (%)	4 doses (%)
Abertawe Bro Morgannwg UHB	1408	2	100.0	100.0	100.0	1384	1	100.0	100.0	100.0	100.0	1481	1	100.0	100.0	100.0	100.0
Aneurin Bevan UHB	1611	0	-	-	-	1646	2	100.0	100.0	50.0	50.0	1726	1	100.0	100.0	100.0	100.0
Betsi Cadwaladr UHB	1755	1	100.0	100.0	100.0	1777	1	100.0	100.0	100.0	100.0	1958	4	100.0	100.0	100.0	100.0
Cardiff and Vale UHB	1489	3	100.0	100.0	100.0	1445	7	100.0	100.0	100.0	85.7	1548	2	100.0	100.0	100.0	50.0
Cwm Taf UHB	828	1	100.0	100.0	100.0	863	0	-	-	-	-	865	0	-	-	-	-
Hywel Dda UHB	887	0	-	-	-	950	0	-	-	-	-	1021	0	-	-	-	-
Powys Teaching HB	293	0	-	-	-	330	0	-	-	-	-	297	1	100.0	100.0	100.0	100.0
Unknown	7	0	-	-	-	4	0	-	-	-	-	14	0	-	-	-	-
Wales Total	8278	7	100.0	100.0	100.0	8399	11	100.0	100.0	90.9	81.8	8910	9	100.0	100.0	100.0	88.9

Data reflects immunisations given and recorded on the Public Health Wales All Wales Neonatal Hepatitis B database of babies born to hepatitis B positive mothers.