

# Vaccine Uptake in Children in Wales January to March 2013

COVER 106: Wales May 2013



## Key points

- Uptake of all scheduled immunisations in children less than one year of age exceeded the 95% uptake target this quarter. Seventeen Local Authority (LA) areas exceeded the 95% uptake target for all routine immunisations in one year olds.
- Uptake of the first dose of MMR vaccine in two year old children was 95% and ranged by LA from 92% to 98%. This is the first time that uptake of the MMR vaccine has exceeded 95% in this age group. Sixteen LA areas and three Health Boards achieved the target of 95% uptake.
- This quarter, 83% of children were up to date with all routine immunisations by four years of age.
- Uptake of the second MMR dose by five years of age remained stable at 90% this quarter.
- Uptake of 4 in 1 pre-school booster in five year old children remained stable at 92% this quarter.
- Uptake of first dose of Human Papillomavirus (HPV) vaccine in girls in the 2012-13 School Year 8 was 89% and uptake of the second dose is currently 85%.
- Coverage of one dose of MMR vaccine in 16 year olds this quarter was 91% and coverage of a completed two dose course was 82%.

These results are for children living in Wales in March 2013 and reaching their first, second, fifth, 15<sup>th</sup> and 16<sup>th</sup> birthdays during the quarter 01/01/2013 to 31/03/2013. Uptake of HPV vaccination in girls in the 2012-13 School Year 8 (reaching their 13<sup>th</sup> birthday between 01/09/2012 and 31/08/2013) is presented, along with coverage in the previous year's School Year 8 group. HPV vaccination protects girls against cervical cancer associated with HPV types 16 and 18. BCG and hepatitis B immunisation uptake data are also presented here. BCG and hepatitis B immunisations are not part of the routine childhood schedule and are given selectively following risk assessment; further information on circumstances in which these immunisations should be given can be found in: Immunisations Against Infectious Disease (The Green Book, available from <http://immunisation.dh.gov.uk/category/the-green-book/>).

## Findings

1. Uptake of all three doses of the combined "5 in 1" DTaP/IPV/Hib<sup>1</sup> vaccine, scheduled at 2, 3 and 4 months of age, in children reaching their first birthday this quarter was stable at 96.5%. Uptake ranged by Health Board from 94.2% to 97.5% and by Local Authority (LA) from 94.2% (Cardiff and Vale of Glamorgan) to 99.6% (Torfaen). Eighteen of the 22 LA areas achieved the target 95% uptake (Figure 3 and Tables 1, 2).
2. National uptake of a completed two dose course of MenC<sup>2</sup> vaccine in children reaching their first birthday this quarter was 96.3% (compared to 96.2% last quarter). Uptake in

<sup>1</sup> DTaP/IPV/Hib vaccine protects against Diphtheria, Tetanus, Pertussis (Whooping Cough), Polio and Hib infection.

<sup>2</sup> Men C vaccine protects against meningitis caused by meningococcus group C infection. PCV protects against pneumococcal meningitis, bacteraemia, pneumonia and otitis media. Children reaching one year of age this quarter have been scheduled for the two dose course of pneumococcal conjugate vaccination (PCV) at two and four months of age and the two dose MenC primary course scheduled at three and four months of age. Children reaching 2 years of age this quarter should have been offered a routine dose of the Hib/ MenC and PCV at 12 to 13 months of age.

Health Boards ranged from 93.7% to 97.5% and ranged by LA from 93.6% (Cardiff) to 99.3% (Torfaen). Nineteen LA areas achieved an uptake in excess of the 95% target (Tables 1, 2).

3. Uptake of a complete two dose primary course of pneumococcal conjugate vaccination (PCV2<sup>2</sup>) in children reaching their first birthday this quarter was stable at 96.1%, ranging by LA from 93.3% (Cardiff) to 98.9% (Torfaen). Nineteen LA areas achieved the target 95% uptake (Table 2).
4. Uptake of the first dose of MMR<sup>3</sup> in children reaching their second birthday (scheduled at 12 to 13 months of age) was 95.1% this quarter (compared to 94.3% last quarter) and ranged by LA from 91.9% (Merthyr Tydfil) to 97.6% (Wrexham) (Figure 4 and Tables 1, 3). Public Health Wales has been informed of a technical issue by Cwm Health Board, which is likely to have resulted in underestimation of the number of children in Merthyr Tydfil who had received MMR vaccination by two years of age this quarter, see Tables 1 and 3 for further information. Three Health Boards and sixteen LA areas achieved the target of 95% uptake.
5. Uptake of the final dose of Pneumococcal Conjugate Vaccine (PCVf, scheduled at 12 to 13 months of age) by the second birthday increased to 95.8% (compared to 94.9% last quarter). Uptake by LA ranged from 92.5% (Merthyr Tydfil) to 97.6% (Anglesey, Flintshire and Wrexham) (Tables 1, 3). Seventeen LA areas achieved an uptake in excess of 95%.
6. Uptake of the Hib/MenC booster (given at 12 months of age) in children reaching two years of age during this quarter increased to 95.1% (compared to 94.1% last quarter), ranging by LA from 92.4% (Cardiff and Conwy) to 97.3% (Flintshire) (Tables 1, 3). Fourteen LA areas achieved uptakes in excess of 95%.
7. In children reaching four years of age this quarter, coverage of the 4 in 1 preschool booster was 88.2%, coverage of a complete course of pneumococcal conjugate vaccine was 92.6%, coverage of the Hib/MenC booster was 94.2% and uptake of two doses of MMR was 86.7%. The proportion of children who were up to date with all their routine immunisations at four years of age was 83.2% (Table 4). This ranged by HB from 79.5% (Cardiff and Vale University HB) to 86.3% (Cwm Taf HB) and by LA from 78.0% (Caerphilly) to 89.3% (Denbighshire).
8. In children reaching five years of age this quarter, uptake of one dose of MMR increased to 96.1% (from 96.0% last quarter). Uptake of two doses of MMR increased to 90.4%, compared to 89.9% last quarter. Uptake of two doses of MMR ranged by Health Board from 89.1% to 92.0% and by LA from 86.4% (Pembrokeshire) to 94.6% (Ceredigion) (Figure 5, Table 5). No LA area exceeded 95% uptake for two doses of MMR by five years of age but eleven LA areas exceeded 90%.
9. Uptake of the "4 in 1" DTaP/IPV<sup>4</sup> pre-school booster in children reaching their fifth birthday increased to 92.1% this quarter (from 91.5% last quarter), ranging by Health Board from 91.0% to 93.7% and by LA from 87.7% (Pembrokeshire) to 95.9% (Ceredigion) (Tables 1, 4). Four LA areas achieved the 95% uptake target and nineteen LA areas had uptakes in excess of 90% (Figure 6, Table 5).
10. Coverage of a two dose primary course of MenC in children reaching their fifth birthday this quarter remained stable at 95.0%. Coverage ranged by Health Board from 93.0% to 97.4% and by LA from 91.8% (Cardiff) to 98.0% (Rhondda Cynon Taf).
11. Uptake of the first dose of HPV vaccine in girls in the 2012-13 School Year 8 was 88.7% (Table 6), uptake of two doses was 84.5% and uptake of three doses was 40.8%. Vaccination sessions for the third dose are still underway, as a result uptake for the third dose is expected to increase. Coverage of HPV vaccination in 2011-12 School Year 8 group was at 89.7%, 88.7% and 86.7% for one, two and three doses respectively (Table 6).
12. Coverage of two doses of MMR in children reaching 16 years of age this quarter was 82.1% (Table 8), ranging by LA from 71.7% (Monmouthshire) to 91.0% (Conwy). Uptake of one dose of MMR was 90.7%, ranging by LA from 82.2% (Monmouthshire) to 95.8% (Gwynedd). Uptake of a full course (two doses of MMR) of immunisation against rubella in 16 year old girls this quarter was 82.1% and uptake of only one dose was 90.5%.

13. National uptake of the Td/IPV<sup>5</sup> teenage booster in children reaching 16 years of age this quarter was 76.9% (Table 8), ranging by LA from 29.5% (Pembrokeshire) to 84.1% (Conwy).
14. Coverage of a complete three dose course of HPV vaccine in girls reaching their 15<sup>th</sup> birthday during 01/09/12 to 31/08/13 (the 2012-13 year 10) is currently 86.5%. Coverage of a complete three dose course of HPV vaccine in girls reaching their 16<sup>th</sup> birthday during 01/09/12 to 31/08/13 (2012-13 year 11) is currently 83.9%. Coverage of a complete three dose course of HPV vaccine in girls reaching their 17<sup>th</sup> birthday during 01/09/12 to 31/08/13 (2012-13 year 12) is currently 87.2% (Table 9).
15. Uptake of BCG<sup>6</sup> immunisation is presented in Table 10. These data are based on notifications of BCG immunisations recorded in the National Community Child Health Database. BCG immunisation has been received by 6.6%, 6.7%, 6.9% and 2.7% of children reaching their first, second, fifth and 16<sup>th</sup> birthdays (respectively) during quarter one 2013. Highest proportions of children given BCG by one and two years of age this quarter were seen in Cardiff and Newport LAs<sup>7</sup>.
16. Uptake of hepatitis B immunisation, recorded through the Child Health System is presented in Table 11. These data are based on reports of hep B immunisations recorded in the National Community Child Health database. Completed vaccination course percentages are only presented for children receiving the first dose of hepatitis B vaccine within seven days of birth. Forty-three, 61 and 88 children reaching their 1<sup>st</sup>, 2<sup>nd</sup> and 5<sup>th</sup> birthdays during quarter one 2013, respectively, started hepatitis B immunisation courses in their first week of life. Of these children 72.1%, 75.4% and 73.9% (respectively) were recorded as having completed three doses of the hepatitis B schedule by those birthdays.

---

<sup>3</sup> MMR protects against measles, mumps and rubella infections.

<sup>4</sup> DTaP/IPV (and dTaP/IPV) vaccines boost protection against Diphtheria, Tetanus, Pertussis and Polio infection before school entry

<sup>5</sup> Td/IPV boosts protection against Diphtheria, Tetanus and Polio infection before entering adulthood

<sup>6</sup> BCG protects against tuberculosis infection.

<sup>7</sup> Numbers of eligible children for BCG and hep B are not known

## Comment

This quarter, for the first time, national uptake of MMR vaccination in children reaching two years of age has exceeded 95%. Uptake of all routine immunisations scheduled for babies in their first year of life again exceeded 95% this quarter and uptake of routine immunisations in older children also showed progress toward 95%.

Achieving 95% uptake of MMR in two year olds is the continuation of a long term positive trend for MMR uptake in Wales since 2003. Additionally, in an attempt to combat the current outbreak of measles, Health Boards and GPs have been working extensively to ensure that children and teenagers who have missed out on scheduled MMR vaccinations are re-offered the chance to catch-up. As a result, this quarter has seen 16 Local Authorities, the highest ever number, achieving the target uptake.

During the current outbreak, more than one thousand cases of measles have been reported from Abertawe Bro Morgannwg University Health Board, Hywel Dda Health Board and Powys Teaching Health Board [1]; and as at 17<sup>th</sup> May 2013, 412 of these had been confirmed by laboratory testing. The majority of cases have been in children and teenagers, who would previously have been offered MMR vaccination, but had missed out. In response to the outbreak, an estimated total of 59,767 individuals (as at 20<sup>th</sup> May 2013) have received catch up MMR doses through General Practice, drop-in clinics, school immunisation sessions and through NHS Occupational Health departments.

In 2005, the Welsh Government set out guidance on the follow up of children who missed out on routine MMR vaccination [2], which includes specifications on checking of MMR status in children on entry to primary and secondary schools; and maintaining accurate local records on MMR status in children.

Although the number of previously unvaccinated individuals who have received MMR immunisation during the outbreak is considerable, there are still pockets of children and teenagers, particularly at secondary school and college age who remain vulnerable to measles, mumps and rubella. Data from the outbreak in Wales confirm the effectiveness of the MMR vaccine, with one dose providing protection to around 95 out of every 100 immunised and two doses providing protection for around 99 out of every 100 immunised. Catch-up of those who have missed out on MMR vaccination remains key in both preventing and controlling outbreaks of measles. MMR is also the best and safest way to ensure individual level protection against the effects of measles, mumps and rubella for children and young adults going forward in life.

[1] Public Health Wales Health Protection Division. Measles Outbreak: Data [cited 20 May 2013] available from:

<http://www.publichealthwales.org/measles-outbreak-data>

[2] Guidance on the follow up of children who have missed out on MMR vaccination (*NHS Wales only*):

<http://howis.wales.nhs.uk/sites3/page.cfm?orgId=474&pid=21347>

## Further information on MMR and measles

For general information on measles in Wales, see: <http://www.wales.nhs.uk/sitesplus/888/page/43749>

For general information on MMR and other vaccinations, see:

<http://www.nhs.uk/Conditions/vaccinations/Pages/vaccination-schedule-age-checklist.aspx>

For information about the measles outbreak in Wales, see:

<http://www.wales.nhs.uk/sitesplus/888/page/66425>

**Report prepared by Public Health Wales Vaccine Preventable Disease Programme and Communicable Disease Surveillance Centre.**

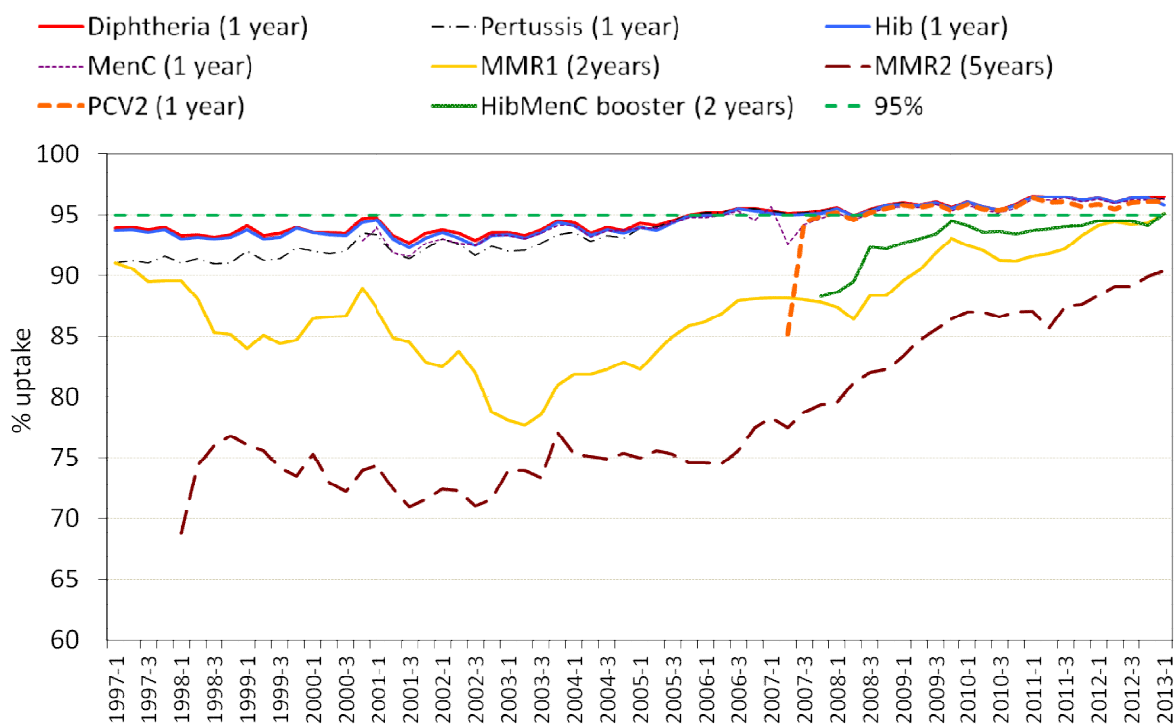
Data for this report was provided by NHS Wales Informatics Service from the National Community Child Health Database (NCCHD). The data was sourced from Community Child Health databases maintained by local Child Health Office staff in Trusts throughout Wales based on regular returns from doctors and nurses who immunise or advise on immunisation. Uptake data presented throughout are for LHB resident population, not for LHB GP practice populations. The maps, graphs and Table 1 are best viewed in colour.

**Suggested citation for this report:**

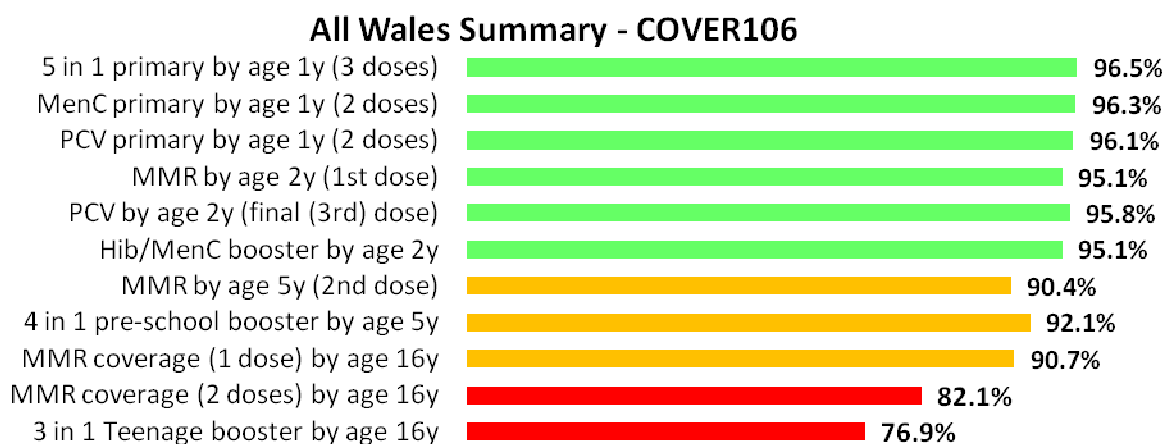
Public Health Wales Health Protection Division. Vaccine uptake in Children in Wales, January to March 2013: COVER report 106, May 2013. Cardiff, Public Health Wales.

If you have any questions or suggestions on COVER reporting in Wales, please contact:  
[surveillance.requests@wales.nhs.uk](mailto:surveillance.requests@wales.nhs.uk)

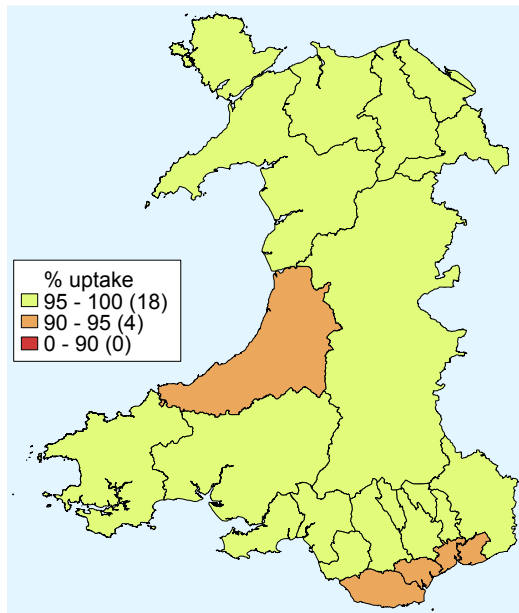
**Figure 1.** Percentage uptake of childhood immunisations in Wales, quarter 1 1997 to quarter 1 2013. Data are for children reaching 1 year of age each quarter for diphtheria, pertussis, Hib, MenC and pneumococcal conjugate vaccine (PCV2), children reaching 2 years of age for MMR1 (first dose) and the Hib MenC booster, and 5 years of age for MMR2 (second dose).



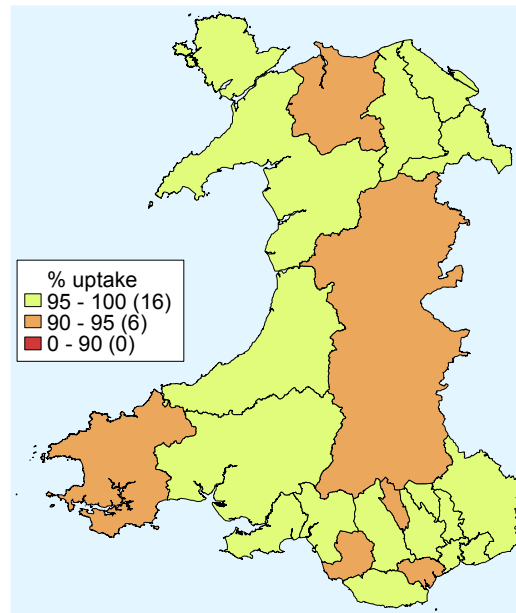
**Figure 2.** Summary of uptake rates for selected immunisations in resident children reaching their 1st, 2nd, 5th and 16th birthday between 01/01/13 and 31/03/13 and resident on 31/03/13.



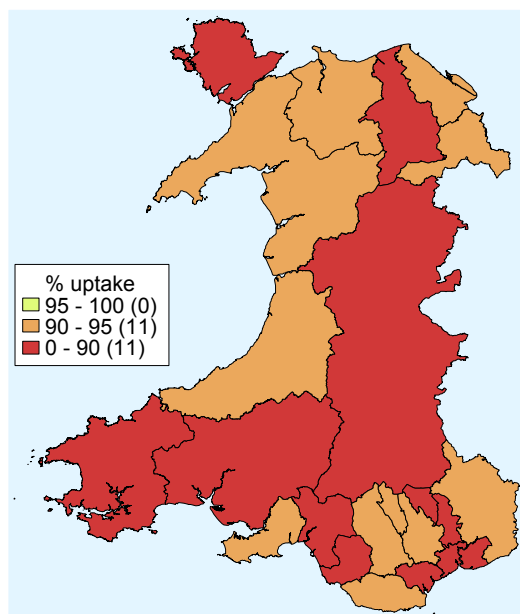
**Figure 3.** Uptake of 5 in 1 vaccine in Welsh Local Authority areas in children reaching their 1<sup>st</sup> birthday between 01/01/13 and 31/03/13.



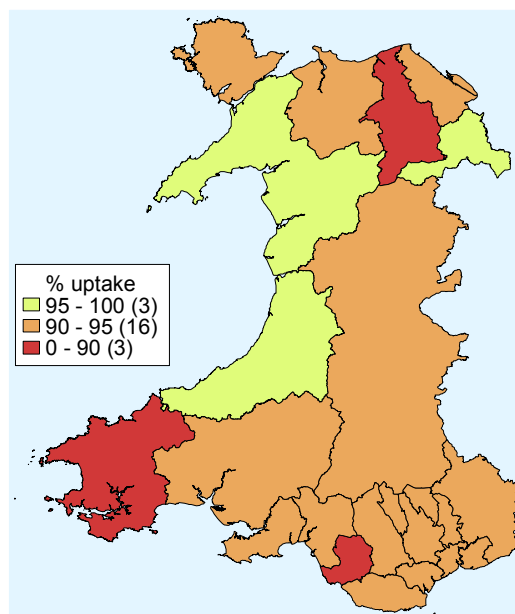
**Figure 4.** Uptake of at least 1 dose of MMR immunisation in Welsh Local Authority areas in children reaching their 2<sup>nd</sup> birthday between 01/01/13 and 31/03/13.



**Figure 5.** Uptake of two doses of MMR vaccine in Welsh Local Authority areas in children reaching their 5<sup>th</sup> birthday between 01/01/13 and 31/03/13.



**Figure 6.** Uptake of 4 in 1 vaccine in Welsh Local Authority areas in children reaching their 5<sup>th</sup> birthday between 01/01/13 and 31/03/13.



**Table 1.** Summary table with uptake of selected immunisations in resident children reaching their 1st, 2nd, 5th and 16th birthday between 01/01/13 and 31/03/13 and resident on 31/03/13.

Area	Age 1 year					Age 2 years					Age 5 years				Age 16 years									
	Resident children (n)	5 in 1* (n) (%)		MenC (n) (%)		Resident children (n)	MMR1 (n) (%)		PCV† (n) (%)		Hib/MenC booster (n) (%)		Resident children (n)	MMR2 (n) (%)		4 in 1* (n) (%)		Resident children (n)	MMR1 (n) (%)		MMR2 (n) (%)		3 in 1 Teenage booster** (n) (%)	
<b>Abertawe Bro Morgannwg University LHB</b>																								
Bridgend LA	384	375	97.7	375	97.7	385	361	93.8	365	94.8	364	94.5	397	352	88.7	354	89.2	445	412	92.6	387	87.0	373	83.8
Neath Port Talbot LA	394	382	97.0	383	97.2	408	388	95.1	394	96.6	395	96.8	388	346	89.2	354	91.2	361	327	90.6	298	82.5	279	77.3
Swansea LA	708	686	96.9	686	96.9	632	602	95.3	604	95.6	597	94.5	734	665	90.6	675	92.0	624	546	87.5	478	76.6	514	82.4
<b>Health Board Total</b>	<b>1486</b>	<b>1443</b>	<b>97.1</b>	<b>1444</b>	<b>97.2</b>	<b>1425</b>	<b>1351</b>	<b>94.8</b>	<b>1363</b>	<b>95.6</b>	<b>1356</b>	<b>95.2</b>	<b>1519</b>	<b>1363</b>	<b>89.7</b>	<b>1383</b>	<b>91.0</b>	<b>1430</b>	<b>1285</b>	<b>89.9</b>	<b>1163</b>	<b>81.3</b>	<b>1166</b>	<b>81.5</b>
<b>Aneurin Bevan LHB</b>																								
Blaenau Gwent LA	170	165	97.1	164	96.5	180	174	96.7	173	96.1	173	96.1	199	178	89.4	180	90.5	187	167	89.3	149	79.7	148	79.1
Caerphilly LA	488	475	97.3	475	97.3	501	479	95.6	484	96.6	483	96.4	544	490	90.1	502	92.3	560	504	90.0	440	78.6	449	80.2
Monmouthshire LA	209	200	95.7	199	95.2	186	179	96.2	181	97.3	180	96.8	231	212	91.8	218	94.4	286	235	82.2	205	71.7	207	72.4
Newport LA	468	444	94.9	445	95.1	461	439	95.2	440	95.4	436	94.6	495	439	88.7	450	90.9	483	424	87.8	376	77.8	355	73.5
Torfaen LA	272	271	99.6	270	99.3	263	252	95.8	253	96.2	251	95.4	246	217	88.2	224	91.1	319	291	91.2	271	85.0	254	79.6
<b>Health Board Total</b>	<b>1607</b>	<b>1555</b>	<b>96.8</b>	<b>1553</b>	<b>96.6</b>	<b>1591</b>	<b>1523</b>	<b>95.7</b>	<b>1531</b>	<b>96.2</b>	<b>1523</b>	<b>95.7</b>	<b>1715</b>	<b>1536</b>	<b>89.6</b>	<b>1574</b>	<b>91.8</b>	<b>1835</b>	<b>1621</b>	<b>88.3</b>	<b>1441</b>	<b>78.5</b>	<b>1413</b>	<b>77.0</b>
<b>Betsi Cadwaladr University LHB</b>																								
Anglesey LA	199	195	98.0	195	98.0	167	160	95.8	163	97.6	162	97.0	186	166	89.2	170	91.4	218	207	95.0	196	89.9	175	80.3
Conwy LA	280	272	97.1	272	97.1	291	274	94.2	273	93.8	269	92.4	267	248	92.9	249	93.3	321	307	95.6	292	91.0	270	84.1
Denbighshire LA	251	242	96.4	242	96.4	273	261	95.6	265	97.1	263	96.3	282	248	87.9	252	89.4	257	243	94.6	218	84.8	209	81.3
Flintshire LA	394	383	97.2	382	97.0	372	360	96.8	363	97.6	362	97.3	456	426	93.4	433	95.0	436	416	95.4	390	89.4	366	83.9
Gwynedd LA	317	311	98.1	311	98.1	285	274	96.1	273	95.8	272	95.4	287	260	90.6	273	95.1	356	341	95.8	321	90.2	295	82.9
Wrexham LA	416	408	98.1	407	97.8	424	414	97.6	414	97.6	412	97.2	440	414	94.1	419	95.2	337	317	94.1	296	87.8	271	80.4
<b>Health Board Total</b>	<b>1857</b>	<b>1811</b>	<b>97.5</b>	<b>1809</b>	<b>97.4</b>	<b>1812</b>	<b>1743</b>	<b>96.2</b>	<b>1751</b>	<b>96.6</b>	<b>1740</b>	<b>96.0</b>	<b>1918</b>	<b>1762</b>	<b>91.9</b>	<b>1796</b>	<b>93.6</b>	<b>1925</b>	<b>1831</b>	<b>95.1</b>	<b>1713</b>	<b>89.0</b>	<b>1586</b>	<b>82.4</b>
<b>Cardiff and Vale University LHB</b>																								
Cardiff LA	1199	1129	94.2	1122	93.6	1137	1055	92.8	1064	93.6	1051	92.4	1128	1009	89.5	1025	90.9	957	856	89.4	772	80.7	675	70.5
Vale of Glamorgan LA	346	326	94.2	326	94.2	354	341	96.3	344	97.2	339	95.8	364	336	92.3	342	94.0	400	357	89.3	338	84.5	317	79.3
<b>Health Board Total</b>	<b>1545</b>	<b>1455</b>	<b>94.2</b>	<b>1448</b>	<b>93.7</b>	<b>1491</b>	<b>1396</b>	<b>93.6</b>	<b>1408</b>	<b>94.4</b>	<b>1390</b>	<b>93.2</b>	<b>1492</b>	<b>1345</b>	<b>90.1</b>	<b>1367</b>	<b>91.6</b>	<b>1357</b>	<b>1213</b>	<b>89.4</b>	<b>1110</b>	<b>81.8</b>	<b>992</b>	<b>73.1</b>
<b>Cwm Taf LHB</b>																								
Merthyr Tydfil LA	184	175	95.1	175	95.1	173	159	91.9	160	92.5	161	93.1	175	158	90.3	161	92.0	199	185	93.0	165	82.9	145	72.9
Rhondda Cynon Taff LA	670	658	98.2	658	98.2	759	735	96.8	739	97.4	733	96.6	640	592	92.5	603	94.2	677	621	91.7	563	83.2	565	83.5
<b>Health Board Total</b>	<b>854</b>	<b>833</b>	<b>97.5</b>	<b>833</b>	<b>97.5</b>	<b>932</b>	<b>894</b>	<b>95.9</b>	<b>899</b>	<b>96.5</b>	<b>894</b>	<b>95.9</b>	<b>815</b>	<b>750</b>	<b>92.0</b>	<b>764</b>	<b>93.7</b>	<b>876</b>	<b>806</b>	<b>92.0</b>	<b>728</b>	<b>83.1</b>	<b>710</b>	<b>81.1</b>
<b>Hywel Dda LHB</b>																								
Carmarthenshire LA	513	493	96.1	490	95.5	486	464	95.5	464	95.5	460	94.7	497	446	89.7	459	92.4	517	474	91.7	411	79.5	402	77.8
Ceredigion LA	150	142	94.7	141	94.0	147	140	95.2	142	96.6	141	95.9	147	139	94.6	141	95.9	168	156	92.9	142	84.5	132	78.6
Pembrokeshire LA	358	346	96.6	347	96.9	339	312	92.0	317	93.5	317	93.5	324	280	86.4	284	87.7	339	299	88.2	264	77.9	100	29.5
<b>Health Board Total</b>	<b>1021</b>	<b>981</b>	<b>96.1</b>	<b>978</b>	<b>95.8</b>	<b>972</b>	<b>916</b>	<b>94.2</b>	<b>923</b>	<b>95.0</b>	<b>918</b>	<b>94.4</b>	<b>968</b>	<b>865</b>	<b>89.4</b>	<b>884</b>	<b>91.3</b>	<b>1024</b>	<b>929</b>	<b>90.7</b>	<b>817</b>	<b>79.8</b>	<b>634</b>	<b>61.9</b>
<b>Powys Teaching LHB</b>	<b>274</b>	<b>262</b>	<b>95.6</b>	<b>261</b>	<b>95.3</b>	<b>272</b>	<b>257</b>	<b>94.5</b>	<b>264</b>	<b>97.1</b>	<b>260</b>	<b>95.6</b>	<b>293</b>	<b>261</b>	<b>89.1</b>	<b>267</b>	<b>91.1</b>	<b>360</b>	<b>309</b>	<b>85.8</b>	<b>264</b>	<b>73.3</b>	<b>280</b>	<b>77.8</b>
Unknown	28	28	100.0	28	100.0	33	32	97.0	33	100.0	31	93.9	41	35	85.4	38	92.7	65	49	75.4	45	69.2	41	63.1
<b>Wales Total</b>	<b>8672</b>	<b>8368</b>	<b>96.5</b>	<b>8354</b>	<b>96.3</b>	<b>8528</b>	<b>8112</b>	<b>95.1</b>	<b>8172</b>	<b>95.8</b>	<b>8112</b>	<b>95.1</b>	<b>8761</b>	<b>7917</b>	<b>90.4</b>	<b>8073</b>	<b>92.1</b>	<b>8872</b>	<b>8043</b>	<b>90.7</b>	<b>7281</b>	<b>82.1</b>	<b>6822</b>	<b>76.9</b>

\* Uptake of pertussis used as proxy

\*\* Uptake of diphtheria (reinforcing booster dose) used as proxy

‡ Children receiving the final dose of PCV

	95% and higher
	90% to 95%
	below 90%

Cwm Taf Health Board has informed Public Health Wales of a technical issue affecting MMR coding in the local child health database for Merthyr Tydfil resident children. As a result of this, the actual numbers of children resident in Merthyr Tydfil LA who have received MMR vaccine by their second birthday, for quarter one 2013, is likely to be higher than the figure presented here. Subsequent analyses carried out by Cwm Taf Health Board suggest that actual coverage for children reaching their second birthday this quarter exceeded 95%. This technical issue has now been resolved.

**Table 2.** Vaccine uptake in children reaching their 1st birthday between 01/01/13 and 31/03/13 and resident on 31/03/13.

Area	Resident children	D3	T3	P3	Po3	Hib3	MMR1	MenC	PCV2*	HibMenCb
	(n)	(n) (%)	(n) (%)	(n) (%)	(n) (%)	(n) (%)	(n) (%)	(n) (%)	(n) (%)	(n) (%)
<b>Abertawe Bro Morgannwg University HB</b>										
Bridgend LA	384	375 97.7	375 97.7	375 97.7	375 97.7	375 97.7	3 0.8	375 97.7	375 97.7	1 0.3
Neath Port Talbot LA	394	382 97.0	382 97.0	382 97.0	382 97.0	382 97.0	1 0.3	383 97.2	381 96.7	1 0.3
Swansea LA	708	686 96.9	686 96.9	686 96.9	686 96.9	687 97.0	2 0.3	686 96.9	684 96.6	0 0.0
<b>Health Board Total</b>	<b>1486</b>	<b>1443 97.1</b>	<b>1443 97.1</b>	<b>1443 97.1</b>	<b>1443 97.1</b>	<b>1444 97.2</b>	<b>6 0.4</b>	<b>1444 97.2</b>	<b>1440 96.9</b>	<b>2 0.1</b>
<b>Aneurin Bevan HB</b>										
Blaenau Gwent LA	170	165 97.1	165 97.1	165 97.1	165 97.1	165 97.1	0 0.0	164 96.5	166 97.6	0 0.0
Caerphilly LA	488	475 97.3	475 97.3	475 97.3	475 97.3	475 97.3	3 0.6	475 97.3	475 97.3	1 0.2
Monmouthshire LA	209	200 95.7	200 95.7	200 95.7	200 95.7	200 95.7	1 0.5	199 95.2	199 95.2	0 0.0
Newport LA	468	444 94.9	444 94.9	444 94.9	444 94.9	444 94.9	0 0.0	445 95.1	442 94.4	0 0.0
Torfaen LA	272	271 99.6	271 99.6	271 99.6	271 99.6	271 99.6	0 0.0	270 99.3	269 98.9	0 0.0
<b>Health Board Total</b>	<b>1607</b>	<b>1555 96.8</b>	<b>1555 96.8</b>	<b>1555 96.8</b>	<b>1555 96.8</b>	<b>1555 96.8</b>	<b>4 0.2</b>	<b>1553 96.6</b>	<b>1551 96.5</b>	<b>1 0.1</b>
<b>Betsi Cadwaladr University HB</b>										
Anglesey LA	199	195 98.0	195 98.0	195 98.0	195 98.0	195 98.0	0 0.0	195 98.0	195 98.0	0 0.0
Conwy LA	280	272 97.1	272 97.1	272 97.1	272 97.1	272 97.1	4 1.4	272 97.1	270 96.4	3 1.1
Denbighshire LA	251	242 96.4	242 96.4	242 96.4	242 96.4	241 96.0	0 0.0	242 96.4	243 96.8	0 0.0
Flintshire LA	394	383 97.2	383 97.2	383 97.2	383 97.2	383 97.2	1 0.3	382 97.0	380 96.4	2 0.5
Gwynedd LA	317	311 98.1	311 98.1	311 98.1	311 98.1	311 98.1	3 0.9	311 98.1	310 97.8	2 0.6
Wrexham LA	416	408 98.1	408 98.1	408 98.1	408 98.1	408 98.1	1 0.2	407 97.8	406 97.6	1 0.2
<b>Health Board Total</b>	<b>1857</b>	<b>1811 97.5</b>	<b>1811 97.5</b>	<b>1811 97.5</b>	<b>1811 97.5</b>	<b>1810 97.5</b>	<b>9 0.5</b>	<b>1809 97.4</b>	<b>1804 97.1</b>	<b>8 0.4</b>
<b>Cardiff and Vale University HB</b>										
Cardiff LA	1199	1129 94.2	1129 94.2	1129 94.2	1129 94.2	1129 94.2	8 0.7	1122 93.6	1119 93.3	8 0.7
Vale of Glamorgan LA	346	326 94.2	326 94.2	326 94.2	326 94.2	326 94.2	3 0.9	326 94.2	324 93.6	3 0.9
<b>Health Board Total</b>	<b>1545</b>	<b>1455 94.2</b>	<b>1455 94.2</b>	<b>1455 94.2</b>	<b>1455 94.2</b>	<b>1453 94.0</b>	<b>11 0.7</b>	<b>1448 93.7</b>	<b>1443 93.4</b>	<b>11 0.7</b>
<b>Cwm Taf HB</b>										
Merthyr Tydfil LA	184	175 95.1	175 95.1	175 95.1	175 95.1	174 94.6	5 2.7	175 95.1	175 95.1	5 2.7
Rhondda Cynon Taff LA	670	658 98.2	658 98.2	658 98.2	658 98.2	658 98.2	6 0.9	658 98.2	657 98.1	5 0.7
<b>Health Board Total</b>	<b>854</b>	<b>833 97.5</b>	<b>833 97.5</b>	<b>833 97.5</b>	<b>833 97.5</b>	<b>832 97.4</b>	<b>11 1.3</b>	<b>833 97.5</b>	<b>832 97.4</b>	<b>10 1.2</b>
<b>Hywel Dda HB</b>										
Carmarthenshire LA	513	493 96.1	493 96.1	493 96.1	493 96.1	493 96.1	0 0.0	490 95.5	490 95.5	0 0.0
Ceredigion LA	150	142 94.7	142 94.7	142 94.7	142 94.7	142 94.7	4 2.7	141 94.0	143 95.3	4 2.7
Pembrokeshire LA	358	346 96.6	346 96.6	346 96.6	346 96.6	346 96.6	0 0.0	347 96.9	341 95.3	1 0.3
<b>Health Board Total</b>	<b>1021</b>	<b>981 96.1</b>	<b>981 96.1</b>	<b>981 96.1</b>	<b>981 96.1</b>	<b>981 96.1</b>	<b>4 0.4</b>	<b>978 95.8</b>	<b>974 95.4</b>	<b>5 0.5</b>
<b>Powys Teaching HB</b>										
Unknown	274	262 95.6	262 95.6	262 95.6	262 95.6	262 95.6	5 1.8	261 95.3	262 95.6	5 1.8
Wales Total	8672	8368 96.5	8368 96.5	8368 96.5	8368 96.5	8367 96.5	50 0.6	8354 96.3	8334 96.1	42 0.5

\* Full primary 2 dose course of pneumococcal conjugate vaccine

**Table 3.** Vaccine uptake in children reaching their 2nd birthday between 01/01/13 and 31/03/13 and resident on 31/03/13.

Area	Resident children	D3	T3	P3	Po3	Hib3	MMR1	MenC*	PCV2**	PCVf***	HibMenCb
	(n)	(n) (%)	(n) (%)	(n) (%)	(n) (%)	(n) (%)	(n) (%)	(n) (%)	(n) (%)	(n) (%)	(n) (%)
<b>Abertawe Bro Morgannwg University HB</b>											
Bridgend LA	385	376 97.7	376 97.7	376 97.7	375 97.4	375 97.4	361 93.8	375 97.4	371 96.4	365 94.8	364 94.5
Neath Port Talbot LA	408	399 97.8	399 97.8	399 97.8	399 97.8	399 97.8	388 95.1	398 97.5	394 96.6	394 96.6	395 96.8
Swansea LA	632	615 97.3	615 97.3	615 97.3	615 97.3	615 97.3	602 95.3	605 95.7	607 96.0	604 95.6	597 94.5
<b>Health Board Total</b>	<b>1425</b>	<b>1390 97.5</b>	<b>1390 97.5</b>	<b>1390 97.5</b>	<b>1389 97.5</b>	<b>1389 97.5</b>	<b>1351 94.8</b>	<b>1378 96.7</b>	<b>1372 96.3</b>	<b>1363 95.6</b>	<b>1356 95.2</b>
<b>Aneurin Bevan HB</b>											
Blaenau Gwent LA	180	177 98.3	177 98.3	177 98.3	177 98.3	177 98.3	174 96.7	176 97.8	176 97.8	173 96.1	173 96.1
Caerphilly LA	501	494 98.6	494 98.6	494 98.6	494 98.6	494 98.6	479 95.6	494 98.6	490 97.8	484 96.6	483 96.4
Monmouthshire LA	186	181 97.3	181 97.3	181 97.3	181 97.3	181 97.3	179 96.2	180 96.8	180 96.8	181 97.3	180 96.8
Newport LA	461	451 97.8	451 97.8	451 97.8	451 97.8	451 97.8	439 95.2	442 95.9	440 95.4	440 95.4	436 94.6
Torfaen LA	263	261 99.2	261 99.2	261 99.2	261 99.2	261 99.2	252 95.8	258 98.1	257 97.7	253 96.2	251 95.4
<b>Health Board Total</b>	<b>1591</b>	<b>1564 98.3</b>	<b>1564 98.3</b>	<b>1564 98.3</b>	<b>1564 98.3</b>	<b>1563 98.3</b>	<b>1523 95.7</b>	<b>1550 97.4</b>	<b>1543 97.0</b>	<b>1531 96.2</b>	<b>1523 95.7</b>
<b>Betsi Cadwaladr University HB</b>											
Anglesey LA	167	164 98.2	164 98.2	164 98.2	164 98.2	164 98.2	160 95.8	164 98.2	163 97.6	163 97.6	162 97.0
Conwy LA	291	281 96.6	281 96.6	281 96.6	281 96.6	281 96.6	274 94.2	278 95.5	272 93.5	273 93.8	269 92.4
Denbighshire LA	273	268 98.2	268 98.2	268 98.2	268 98.2	268 98.2	267 97.8	261 95.6	266 97.4	265 97.1	263 96.3
Flintshire LA	372	367 98.7	367 98.7	367 98.7	367 98.7	367 98.7	360 96.8	366 98.4	363 97.6	363 97.6	362 97.3
Gwynedd LA	285	278 97.5	278 97.5	278 97.5	278 97.5	277 97.2	274 96.1	276 96.8	275 96.5	273 95.8	272 95.4
Wrexham LA	424	421 99.3	421 99.3	421 99.3	421 99.3	421 99.3	414 97.6	417 98.3	414 97.6	414 97.6	412 97.2
<b>Health Board Total</b>	<b>1812</b>	<b>1779 98.2</b>	<b>1779 98.2</b>	<b>1779 98.2</b>	<b>1779 98.2</b>	<b>1777 98.1</b>	<b>1743 96.2</b>	<b>1770 97.7</b>	<b>1753 96.7</b>	<b>1751 96.6</b>	<b>1740 96.0</b>
<b>Cardiff and Vale University HB</b>											
Cardiff LA	1137	1088 95.7	1088 95.7	1088 95.7	1089 95.8	1085 95.4	1055 92.8	1071 94.2	1046 92.0	1064 93.6	1051 92.4
Vale of Glamorgan LA	354	349 98.6	349 98.6	349 98.6	349 98.6	349 98.6	341 96.3	344 97.2	341 96.3	344 97.2	339 95.8
<b>Health Board Total</b>	<b>1491</b>	<b>1437 96.4</b>	<b>1437 96.4</b>	<b>1437 96.4</b>	<b>1438 96.4</b>	<b>1434 96.2</b>	<b>1396 93.6</b>	<b>1415 94.9</b>	<b>1387 93.0</b>	<b>1408 94.4</b>	<b>1390 93.2</b>
<b>Cwm Taf HB</b>											
Merthyr Tydfil LA	173	169 97.7	169 97.7	169 97.7	169 97.7	169 97.7	159 91.9	170 98.3	169 97.7	160 92.5	161 93.1
Rhondda Cynon Taff LA	759	747 98.4	747 98.4	747 98.4	747 98.4	747 98.4	735 96.8	747 98.4	736 97.0	739 97.4	733 96.6
<b>Health Board Total</b>	<b>932</b>	<b>916 98.3</b>	<b>916 98.3</b>	<b>916 98.3</b>	<b>916 98.3</b>	<b>916 98.3</b>	<b>894 95.9</b>	<b>917 98.4</b>	<b>905 97.1</b>	<b>899 96.5</b>	<b>894 95.9</b>
<b>Hywel Dda HB</b>											
Cardiff LA	486	472 97.1	472 97.1	472 97.1	471 96.9	472 97.1	464 95.5	465 95.7	458 94.2	464 95.5	460 94.7
Ceredigion LA	147	143 97.3	143 97.3	143 97.3	143 97.3	143 97.3	140 95.2	141 95.9	140 95.2	142 96.6	141 95.9
Pembrokeshire LA	339	327 96.5	327 96.5	327 96.5	327 96.5	327 96.5	312 92.0	324 95.6	324 95.6	317 93.5	317 93.5
<b>Health Board Total</b>	<b>972</b>	<b>942 96.9</b>	<b>942 96.9</b>	<b>942 96.9</b>	<b>941 96.8</b>	<b>942 96.9</b>	<b>916 94.2</b>	<b>930 95.7</b>	<b>922 94.9</b>	<b>923 95.0</b>	<b>918 94.4</b>
<b>Powys Teaching HB</b>											
Unknown	272	269 98.9	269 98.9	269 98.9	269 98.9	269 98.9	257 94.5	262 96.3	258 94.9	264 97.1	260 95.6
Wales Total	8528	8330 97.7	8330 97.7	8330 97.7	8329 97.7	8323 97.6	8112 95.1	8253 96.8	8172 95.8	8172 95.8	8112 95.1

\* Reflects uptake of the completed primary course in this age group

\*\* Full primary 2 dose course of pneumococcal conjugate vaccine

\*\*\* Final (booster) dose of pneumococcal conjugate vaccine

*Cwm Taf Health Board has informed Public Health Wales of a technical issue affecting MMR coding in the local child health database for Merthyr Tydfil resident children. As a result of this, the actual numbers of children resident in Merthyr Tydfil LA who have received MMR vaccine by their second birthday, for quarter one 2013, is likely to be higher than the figure presented here. Subsequent analyses carried out by Cwm Taf Health Board suggest that actual coverage for children reaching their second birthday this quarter exceeded 95%. This technical issue has now been resolved.*

**Table 4.** Vaccine uptake in children reaching their 4th birthday between 01/01/13 and 31/03/13 and resident on 31/03/13.

Area	Resident children	4 in 1 Preschool Booster*		PCVf**		HibMenCb		MMR dose 2		Up to date in schedule***	
	(n)	(n)	(%)	(n)	(%)	(n)	(%)	(n)	(%)	(n)	(%)
<b>Abertawe Bro Morgannwg University HB</b>											
Bridgend LA	346	298	86.1	313	90.5	322	93.1	293	84.7	280	80.9
Neath Port Talbot LA	354	311	87.9	333	94.1	335	94.6	302	85.3	293	82.8
Swansea LA	650	587	90.3	614	94.5	624	96.0	575	88.5	558	85.8
<b>Health Board Total</b>	<b>1350</b>	<b>1196</b>	<b>88.6</b>	<b>1260</b>	<b>93.3</b>	<b>1281</b>	<b>94.9</b>	<b>1170</b>	<b>86.7</b>	<b>1131</b>	<b>83.8</b>
<b>Aneurin Bevan HB</b>											
Blaenau Gwent LA	162	146	90.1	156	96.3	156	96.3	143	88.3	141	87.0
Caerphilly LA	481	394	81.9	450	93.6	453	94.2	389	80.9	375	78.0
Monmouthshire LA	214	192	89.7	204	95.3	203	94.9	191	89.3	185	86.4
Newport LA	448	391	87.3	408	91.1	419	93.5	386	86.2	364	81.3
Torfaen LA	282	246	87.2	267	94.7	273	96.8	241	85.5	235	83.3
<b>Health Board Total</b>	<b>1587</b>	<b>1369</b>	<b>86.3</b>	<b>1485</b>	<b>93.6</b>	<b>1504</b>	<b>94.8</b>	<b>1350</b>	<b>85.1</b>	<b>1300</b>	<b>81.9</b>
<b>Betsi Cadwaladr University HB</b>											
Anglesey LA	193	175	90.7	178	92.2	182	94.3	171	88.6	166	86.0
Conwy LA	287	251	87.5	269	93.7	272	94.8	249	86.8	243	84.7
Denbighshire LA	252	230	91.3	238	94.4	243	96.4	228	90.5	225	89.3
Flintshire LA	423	384	90.8	397	93.9	405	95.7	383	90.5	372	87.9
Gwynedd LA	324	287	88.6	298	92.0	304	93.8	276	85.2	268	82.7
Wrexham LA	392	343	87.5	372	94.9	375	95.7	345	88.0	331	84.4
<b>Health Board Total</b>	<b>1871</b>	<b>1670</b>	<b>89.3</b>	<b>1752</b>	<b>93.6</b>	<b>1781</b>	<b>95.2</b>	<b>1652</b>	<b>88.3</b>	<b>1605</b>	<b>85.8</b>
<b>Cardiff and Vale University HB</b>											
Cardiff LA	1123	959	85.4	1006	89.6	1029	91.6	946	84.2	877	78.1
Vale of Glamorgan LA	362	322	89.0	345	95.3	345	95.3	317	87.6	303	83.7
<b>Health Board Total</b>	<b>1485</b>	<b>1281</b>	<b>86.3</b>	<b>1351</b>	<b>91.0</b>	<b>1374</b>	<b>92.5</b>	<b>1263</b>	<b>85.1</b>	<b>1180</b>	<b>79.5</b>
<b>Cwm Taf HB</b>											
Merthyr Tydfil LA	149	132	88.6	140	94.0	139	93.3	130	87.2	126	84.6
Rhondda Cynon Taff LA	705	638	90.5	665	94.3	676	95.9	628	89.1	611	86.7
<b>Health Board Total</b>	<b>854</b>	<b>770</b>	<b>90.2</b>	<b>805</b>	<b>94.3</b>	<b>815</b>	<b>95.4</b>	<b>758</b>	<b>88.8</b>	<b>737</b>	<b>86.3</b>
<b>Hywel Dda HB</b>											
Carmarthenshire LA	445	395	88.8	397	89.2	410	92.1	386	86.7	365	82.0
Ceredigion LA	159	148	93.1	145	91.2	146	91.8	145	91.2	136	85.5
Pembrokeshire LA	307	271	88.3	273	88.9	289	94.1	264	86.0	252	82.1
<b>Health Board Total</b>	<b>911</b>	<b>814</b>	<b>89.4</b>	<b>815</b>	<b>89.5</b>	<b>845</b>	<b>92.8</b>	<b>795</b>	<b>87.3</b>	<b>753</b>	<b>82.7</b>
<b>Powys Teaching HB</b>	<b>288</b>	<b>258</b>	<b>89.6</b>	<b>259</b>	<b>89.9</b>	<b>264</b>	<b>91.7</b>	<b>247</b>	<b>85.8</b>	<b>238</b>	<b>82.6</b>
Unknown	30	28	93.3	26	86.7	26	86.7	28	93.3	25	83.3
<b>Wales Total</b>	<b>8376</b>	<b>7386</b>	<b>88.2</b>	<b>7753</b>	<b>92.6</b>	<b>7890</b>	<b>94.2</b>	<b>7263</b>	<b>86.7</b>	<b>6969</b>	<b>83.2</b>

\* Uptake of acellular pertussis used as proxy

\*\* Full primary 2 dose course of pneumococcal conjugate vaccine

\*\*\* Completed 4 in 1 preschool booster, final dose of pneumococcal conjugate vaccine, the Hib/ MenC booster and second MMR dose by four years of age

**Table 5.** Vaccine uptake in children reaching their 5th birthday between 01/01/13 and 31/03/13 and resident on 31/03/13.

Area	Resident children	D3	T3	P3	Po3	Hib3	MenC*	PCVf**	HibMenCb	MMR1	MMR2	D4	T4	aP	Po4	
	(n)	(n) (%)	(n) (%)	(n) (%)	(n) (%)	(n) (%)	(n) (%)	(n) (%)	(n) (%)	(n) (%)	(n) (%)	(n) (%)	(n) (%)	(n) (%)	(n) (%)	
<b>Abertawe Bro Morgannwg University HB</b>																
Bridgend LA	397	388 97.7	388 97.7	386 97.2	385 97.0	386 97.2	383 96.5	367 92.4	376 94.7	379 95.5	352 88.7	354 89.2	354 89.2	354 89.2	354 89.2	
Neath Port Talbot LA	388	379 97.7	379 97.7	379 97.7	379 97.7	379 97.7	374 96.4	362 93.3	371 95.6	371 95.6	346 89.2	354 91.2	354 91.2	354 91.2	354 91.2	
Swansea LA	734	704 95.9	704 95.9	704 95.9	704 95.9	701 95.5	686 93.5	678 92.4	692 94.3	706 96.2	665 90.6	676 92.1	676 92.1	675 92.0	676 92.1	
<b>Health Board Total</b>	<b>1519</b>	<b>1471 96.8</b>	<b>1471 96.8</b>	<b>1469 96.7</b>	<b>1468 96.6</b>	<b>1466 96.5</b>	<b>1443 95.0</b>	<b>1407 92.6</b>	<b>1439 94.7</b>	<b>1456 95.9</b>	<b>1363 89.7</b>	<b>1384 91.1</b>	<b>1384 91.1</b>	<b>1383 91.0</b>	<b>1384 91.1</b>	
<b>Aneurin Bevan HB</b>																
Blaenau Gwent LA	199	193 97.0	193 97.0	193 97.0	193 97.0	193 97.0	192 96.5	189 95.0	189 95.0	189 95.0	178 89.4	180 90.5	180 90.5	180 90.5	180 90.5	
Caerphilly LA	544	534 98.2	534 98.2	534 98.2	534 98.2	534 98.2	529 97.2	496 91.2	521 95.8	527 96.9	490 90.1	502 92.3	502 92.3	502 92.3	502 92.3	
Monmouthshire LA	231	226 97.8	226 97.8	226 97.8	225 97.4	226 97.8	222 96.1	214 92.6	220 95.2	222 96.1	212 91.8	218 94.4	218 94.4	218 94.4	218 94.4	
Newport LA	495	474 95.8	474 95.8	474 95.8	472 95.4	471 95.2	460 92.9	449 90.7	455 91.9	473 95.6	439 88.7	450 90.9	450 90.9	450 90.9	450 90.9	
Torfaen LA	246	241 98.0	241 98.0	241 98.0	241 98.0	241 98.0	235 95.5	220 89.4	231 93.9	233 94.7	217 88.2	224 91.1	224 91.1	224 91.1	224 91.1	
<b>Health Board Total</b>	<b>1715</b>	<b>1668 97.3</b>	<b>1668 97.3</b>	<b>1668 97.3</b>	<b>1665 97.1</b>	<b>1665 97.1</b>	<b>1638 95.5</b>	<b>1568 91.4</b>	<b>1616 94.2</b>	<b>1644 95.9</b>	<b>1536 89.6</b>	<b>1574 91.8</b>	<b>1574 91.8</b>	<b>1574 91.8</b>	<b>1574 91.8</b>	
<b>Betsi Cadwaladr University HB</b>																
Anglesey LA	186	178 95.7	178 95.7	178 95.7	178 95.7	178 95.7	176 94.6	163 87.6	176 94.6	175 94.1	166 89.2	170 91.4	170 91.4	170 91.4	170 91.4	
Conwy LA	267	261 97.8	261 97.8	261 97.8	261 97.8	261 97.8	258 96.6	247 92.5	255 95.5	258 96.6	248 92.9	249 93.3	249 93.3	249 93.3	249 93.3	
Denbighshire LA	282	270 95.7	270 95.7	270 95.7	270 95.7	270 95.7	263 93.3	256 90.8	260 92.2	265 94.0	248 87.9	252 89.4	252 89.4	252 89.4	252 89.4	
Flintshire LA	456	450 98.7	450 98.7	450 98.7	450 98.7	449 98.5	439 96.3	426 93.4	443 97.1	442 96.9	426 93.4	433 95.0	433 95.0	433 95.0	433 95.0	
Gwynedd LA	287	279 97.2	278 96.9	279 97.2	278 96.9	278 96.9	275 95.8	262 91.3	272 94.8	277 96.5	260 90.6	273 95.1	273 95.1	273 95.1	273 95.1	
Wrexham LA	440	432 98.2	432 98.2	432 98.2	431 98.0	432 98.2	427 97.0	418 95.0	423 96.1	431 98.0	414 94.1	419 95.2	419 95.2	419 95.2	419 95.2	
<b>Health Board Total</b>	<b>1918</b>	<b>1870 97.5</b>	<b>1869 97.4</b>	<b>1870 97.5</b>	<b>1868 97.4</b>	<b>1868 97.4</b>	<b>1838 95.8</b>	<b>1772 92.4</b>	<b>1829 95.4</b>	<b>1848 96.4</b>	<b>1762 91.9</b>	<b>1796 93.6</b>	<b>1796 93.6</b>	<b>1796 93.6</b>	<b>1796 93.6</b>	
<b>Cardiff and Vale University HB</b>																
Cardiff LA	1128	1092 96.8	1092 96.8	1092 96.8	1089 96.5	1086 96.3	1035 91.8	1005 89.1	1030 91.3	1087 96.4	1009 89.5	1027 91.0	1027 91.0	1025 90.9	1026 91.0	
Vale of Glamorgan LA	364	360 98.9	360 98.9	360 98.9	360 98.9	358 98.4	353 97.0	348 95.6	343 94.2	357 98.1	336 92.3	342 94.0	342 94.0	342 94.0	342 94.0	
<b>Health Board Total</b>	<b>1492</b>	<b>1452 97.3</b>	<b>1452 97.3</b>	<b>1452 97.3</b>	<b>1449 97.1</b>	<b>1444 96.8</b>	<b>1388 93.0</b>	<b>1353 90.7</b>	<b>1373 92.0</b>	<b>1444 96.8</b>	<b>1345 90.1</b>	<b>1369 91.8</b>	<b>1369 91.8</b>	<b>1367 91.6</b>	<b>1368 91.7</b>	
<b>Cwm Taf HB</b>																
Merthyr Tydfil LA	175	170 97.1	170 97.1	170 97.1	170 97.1	170 97.1	167 95.4	167 95.4	169 96.6	169 96.6	158 90.3	161 92.0	161 92.0	161 92.0	161 92.0	
Rhondda Cynon Taff LA	640	630 98.4	630 98.4	630 98.4	630 98.4	630 98.4	627 98.0	608 95.0	613 95.8	617 96.4	592 92.5	603 94.2	603 94.2	603 94.2	603 94.2	
<b>Health Board Total</b>	<b>815</b>	<b>800 98.2</b>	<b>800 98.2</b>	<b>800 98.2</b>	<b>800 98.2</b>	<b>800 98.2</b>	<b>794 97.4</b>	<b>775 95.1</b>	<b>782 96.0</b>	<b>786 96.4</b>	<b>750 92.0</b>	<b>764 93.7</b>	<b>764 93.7</b>	<b>764 93.7</b>	<b>764 93.7</b>	
<b>Hywel Dda HB</b>																
Cardiff LA	497	481 96.8	481 96.8	481 96.8	481 96.8	481 96.8	472 95.0	452 90.9	469 94.4	480 96.6	446 89.7	459 92.4	459 92.4	459 92.4	459 92.4	
Ceredigion LA	147	144 98.0	144 98.0	144 98.0	144 98.0	144 98.0	142 96.6	140 95.2	142 96.6	143 97.3	139 94.6	141 95.9	141 95.9	141 95.9	141 95.9	
Pembrokeshire LA	324	308 95.1	308 95.1	308 95.1	308 95.1	307 94.8	298 92.0	287 88.6	296 91.4	305 94.1	280 86.4	284 87.7	284 87.7	284 87.7	284 87.7	
<b>Health Board Total</b>	<b>968</b>	<b>933 96.4</b>	<b>933 96.4</b>	<b>933 96.4</b>	<b>933 96.4</b>	<b>933 96.4</b>	<b>912 94.2</b>	<b>879 90.8</b>	<b>907 93.7</b>	<b>928 95.9</b>	<b>865 89.4</b>	<b>884 91.3</b>	<b>884 91.3</b>	<b>884 91.3</b>	<b>884 91.3</b>	
<b>Powys Teaching HB</b>																
Powys Teaching HB	293	276 94.2	276 94.2	276 94.2	276 94.2	276 94.2	273 93.2	264 90.1	272 92.8	273 93.2	261 89.1	267 91.1	267 91.1	267 91.1	267 91.1	
Unknown	41	39 95.1	39 95.1	39 95.1	39 95.1	39 95.1	39 95.1	38 92.7	39 95.1	36 87.8	35 85.4	38 92.7	38 92.7	38 92.7	38 92.7	
<b>Wales Total</b>	<b>8761</b>	<b>8509 97.1</b>	<b>8508 97.1</b>	<b>8507 97.1</b>	<b>8498 97.0</b>	<b>8491 96.9</b>	<b>8325 95.0</b>	<b>8056 92.0</b>	<b>8257 94.2</b>	<b>8415 96.1</b>	<b>7917 90.4</b>	<b>8076 92.2</b>	<b>8076 92.2</b>	<b>8073 92.1</b>	<b>8075 92.2</b>	

\* Complete three dose course, or two doses with the second delivered after 115 days of age

\*\* Final (booster) dose of pneumococcal conjugate vaccine

**Table 6.** Uptake of HPV vaccine in girls reaching 13 and 14 years of age between 01/09/12 and 31/08/13 and resident on 31/03/13.

Area	13 years (2012-13 School Year 8)*							14 years (2012-13 School Year 9)						
	Resident girls (n)	HPV 1 dose (n) (%)	HPV 2 doses (n) (%)	HPV 3 doses (n) (%)	Resident girls (n)	HPV 1 dose (n) (%)	HPV 2 doses (n) (%)	HPV 3 doses (n) (%)						
<b>Abertawe Bro Morgannwg University HB</b>														
Bridgend LA	724	673 93.0	642 88.7	430 59.4	778	703 90.4	698 89.7	686 88.2						
Neath Port Talbot LA	664	614 92.5	573 86.3	308 46.4	719	654 91.0	647 90.0	639 88.9						
Swansea LA	1203	1098 91.3	1017 84.5	403 33.5	1166	1057 90.7	1042 89.4	1025 87.9						
<b>Health Board Total</b>	<b>2591</b>	<b>2385 92.0</b>	<b>2232 86.1</b>	<b>1141 44.0</b>	<b>2663</b>	<b>2414 90.6</b>	<b>2387 89.6</b>	<b>2350 88.2</b>						
<b>Aneurin Bevan HB</b>														
Blaenau Gwent LA	370	345 93.2	321 86.8	205 55.4	381	361 94.8	360 94.5	352 92.4						
Caerphilly LA	917	823 89.7	778 84.8	455 49.6	999	922 92.3	914 91.5	908 90.9						
Monmouthshire LA	526	413 78.5	401 76.2	329 62.5	523	411 78.6	409 78.2	400 76.5						
Newport LA	865	768 88.8	739 85.4	581 67.2	928	799 86.1	787 84.8	771 83.1						
Torfaen LA	479	424 88.5	408 85.2	326 68.1	539	493 91.5	491 91.1	477 88.5						
<b>Health Board Total</b>	<b>3157</b>	<b>2773 87.8</b>	<b>2647 83.8</b>	<b>1896 60.1</b>	<b>3370</b>	<b>2986 88.6</b>	<b>2961 87.9</b>	<b>2908 86.3</b>						
<b>Betsi Cadwaladr University HB</b>														
Anglesey LA	350	307 87.7	299 85.4	266 76.0	364	324 89.0	320 87.9	309 84.9						
Conwy LA	581	512 88.1	503 86.6	46 7.9	601	546 90.8	544 90.5	529 88.0						
Denbighshire LA	499	418 83.8	416 83.4	271 54.3	548	483 88.1	482 88.0	475 86.7						
Flintshire LA	798	722 90.5	622 77.9	38 4.8	785	722 92.0	714 91.0	703 89.6						
Gwynedd LA	606	537 88.6	533 88.0	435 71.8	646	570 88.2	564 87.3	558 86.4						
Wrexham LA	711	619 87.1	601 84.5	62 8.7	671	603 89.9	601 89.6	595 88.7						
<b>Health Board Total</b>	<b>3545</b>	<b>3115 87.9</b>	<b>2974 83.9</b>	<b>1118 31.5</b>	<b>3615</b>	<b>3248 89.8</b>	<b>3225 89.2</b>	<b>3169 87.7</b>						
<b>Cardiff and Vale University HB</b>														
Cardiff LA	1746	1526 87.4	1416 81.1	631 36.1	1792	1594 89.0	1556 86.8	1460 81.5						
Vale of Glamorgan LA	688	633 92.0	603 87.6	154 22.4	710	659 92.8	654 92.1	629 88.6						
<b>Health Board Total</b>	<b>2434</b>	<b>2159 88.7</b>	<b>2019 82.9</b>	<b>785 32.3</b>	<b>2502</b>	<b>2253 90.0</b>	<b>2210 88.3</b>	<b>2089 83.5</b>						
<b>Cwm Taf HB</b>														
Merthyr Tydfil LA	317	288 90.9	279 88.0	173 54.6	305	285 93.4	283 92.8	282 92.5						
Rhondda Cynon Taff LA	1179	1100 93.3	1078 91.4	385 32.7	1247	1184 94.9	1176 94.3	1148 92.1						
<b>Health Board Total</b>	<b>1496</b>	<b>1388 92.8</b>	<b>1357 90.7</b>	<b>558 37.3</b>	<b>1552</b>	<b>1469 94.7</b>	<b>1459 94.0</b>	<b>1430 92.1</b>						
<b>Hywel Dda HB</b>														
Carmarthenshire LA	847	755 89.1	735 86.8	435 51.4	940	843 89.7	840 89.4	835 88.8						
Ceredigion LA	306	259 84.6	255 83.3	237 77.5	302	256 84.8	252 83.4	251 83.1						
Pembrokeshire LA	626	540 86.3	524 83.7	0 0.0	650	566 87.1	556 85.5	531 81.7						
<b>Health Board Total</b>	<b>1779</b>	<b>1554 87.4</b>	<b>1514 85.1</b>	<b>672 37.8</b>	<b>1892</b>	<b>1665 88.0</b>	<b>1648 87.1</b>	<b>1617 85.5</b>						
<b>Powys Teaching HB</b>	<b>639</b>	<b>514 80.4</b>	<b>478 74.8</b>	<b>212 33.2</b>	<b>692</b>	<b>586 84.7</b>	<b>581 84.0</b>	<b>570 82.4</b>						
Unknown	89	68 76.4	65 73.0	34 38.2	86	58 67.4	58 67.4	59 68.6						
<b>Wales Total</b>	<b>15730</b>	<b>13956 88.7</b>	<b>13286 84.5</b>	<b>6416 40.8</b>	<b>16372</b>	<b>14679 89.7</b>	<b>14529 88.7</b>	<b>14192 86.7</b>						

\* Current campaign, data entry for immunisation sessions may still be underway.

**Table 7.** MMR and Td/IPV vaccine uptake in children reaching their 15th birthday between 01/01/13 and 31/03/13 and resident on 31/03/13 (with breakdown of MMR1 and MMR2 coverage by sex).

Area	Resident children		MMR1		MMR2		Teenage 3 in 1 booster*		Resident girls		MMR1 (girls)		MMR2 (girls)		Resident boys		MMR1 (boys)		MMR2 (boys)	
	(n)	(n)	(%)	(n)	(%)	(n)	(%)	(n)	(n)	(n)	(%)	(n)	(%)	(n)	(n)	(n)	(%)	(n)	(%)	
<b><u>Abertawe Bro Morgannwg University HB</u></b>																				
Bridgend LA	405	366	90.4	329	81.2	212	52.3	188	165	87.8	152	80.9	217	201	92.6	177	81.6			
Neath Port Talbot LA	356	323	90.7	284	79.8	201	56.5	167	148	88.6	132	79.0	189	175	92.6	152	80.4			
Swansea LA	607	549	90.4	492	81.1	277	45.6	308	276	89.6	247	80.2	299	273	91.3	245	81.9			
<b>Health Board Total</b>	<b>1368</b>	<b>1238</b>	<b>90.5</b>	<b>1105</b>	<b>80.8</b>	<b>690</b>	<b>50.4</b>	<b>663</b>	<b>589</b>	<b>88.8</b>	<b>531</b>	<b>80.1</b>	<b>705</b>	<b>649</b>	<b>92.1</b>	<b>574</b>	<b>81.4</b>			
<b><u>Aneurin Bevan HB</u></b>																				
Blaenau Gwent LA	220	197	89.5	189	85.9	179	81.4	123	113	91.9	109	88.6	97	84	86.6	80	82.5			
Caerphilly LA	533	479	89.9	435	81.6	390	73.2	261	236	90.4	213	81.6	272	243	89.3	222	81.6			
Monmouthshire LA	291	247	84.9	217	74.6	196	67.4	133	113	85.0	95	71.4	158	134	84.8	122	77.2			
Newport LA	479	432	90.2	378	78.9	359	74.9	242	216	89.3	192	79.3	237	216	91.1	186	78.5			
Torfaen LA	296	276	93.2	253	85.5	214	72.3	148	139	93.9	128	86.5	147	137	93.2	125	85.0			
<b>Health Board Total</b>	<b>1819</b>	<b>1631</b>	<b>89.7</b>	<b>1472</b>	<b>80.9</b>	<b>1338</b>	<b>73.6</b>	<b>907</b>	<b>817</b>	<b>90.1</b>	<b>737</b>	<b>81.3</b>	<b>911</b>	<b>814</b>	<b>89.4</b>	<b>735</b>	<b>80.7</b>			
<b><u>Betsi Cadwaladr University HB</u></b>																				
Anglesey LA	193	184	95.3	176	91.2	168	87.0	101	100	99.0	95	94.1	92	84	91.3	81	88.0			
Conwy LA	309	290	93.9	279	90.3	259	83.8	140	133	95.0	129	92.1	168	156	92.9	149	88.7			
Denbighshire LA	259	253	97.7	236	91.1	208	80.3	117	113	96.6	104	88.9	142	140	98.6	132	93.0			
Flintshire LA	435	420	96.6	400	92.0	356	81.8	206	200	97.1	192	93.2	229	220	96.1	208	90.8			
Gwynedd LA	329	320	97.3	307	93.3	288	87.5	146	142	97.3	134	91.8	183	178	97.3	173	94.5			
Wrexham LA	332	324	97.6	310	93.4	252	75.9	177	173	97.7	169	95.5	155	151	97.4	141	91.0			
<b>Health Board Total</b>	<b>1857</b>	<b>1791</b>	<b>96.4</b>	<b>1708</b>	<b>92.0</b>	<b>1531</b>	<b>82.4</b>	<b>887</b>	<b>861</b>	<b>97.1</b>	<b>823</b>	<b>92.8</b>	<b>969</b>	<b>929</b>	<b>95.9</b>	<b>884</b>	<b>91.2</b>			
<b><u>Cardiff and Vale University HB</u></b>																				
Cardiff LA	951	845	88.9	781	82.1	656	69.0	468	419	89.5	395	84.4	482	426	88.4	386	80.1			
Vale of Glamorgan LA	340	323	95.0	304	89.4	277	81.5	171	161	94.2	150	87.7	169	162	95.9	154	91.1			
<b>Health Board Total</b>	<b>1291</b>	<b>1168</b>	<b>90.5</b>	<b>1085</b>	<b>84.0</b>	<b>933</b>	<b>72.3</b>	<b>639</b>	<b>580</b>	<b>90.8</b>	<b>545</b>	<b>85.3</b>	<b>651</b>	<b>588</b>	<b>90.3</b>	<b>540</b>	<b>82.9</b>			
<b><u>Cwm Taf HB</u></b>																				
Merthyr Tydfil LA	163	149	91.4	137	84.0	52	31.9	80	70	87.5	63	78.8	83	79	95.2	74	89.2			
Rhondda Cynon Taff LA	634	588	92.7	546	86.1	254	40.1	325	302	92.9	280	86.2	309	286	92.6	266	86.1			
<b>Health Board Total</b>	<b>797</b>	<b>737</b>	<b>92.5</b>	<b>683</b>	<b>85.7</b>	<b>306</b>	<b>38.4</b>	<b>405</b>	<b>372</b>	<b>91.9</b>	<b>343</b>	<b>84.7</b>	<b>392</b>	<b>365</b>	<b>93.1</b>	<b>340</b>	<b>86.7</b>			
<b><u>Hywel Dda HB</u></b>																				
Carmarthenshire LA	471	427	90.7	377	80.0	215	45.6	225	206	91.6	186	82.7	246	221	89.8	191	77.6			
Ceredigion LA	160	149	93.1	128	80.0	48	30.0	75	71	94.7	60	80.0	85	78	91.8	68	80.0			
Pembrokeshire LA	349	309	88.5	276	79.1	130	37.2	149	132	88.6	120	80.5	200	177	88.5	156	78.0			
<b>Health Board Total</b>	<b>980</b>	<b>885</b>	<b>90.3</b>	<b>781</b>	<b>79.7</b>	<b>393</b>	<b>40.1</b>	<b>449</b>	<b>409</b>	<b>91.1</b>	<b>366</b>	<b>81.5</b>	<b>531</b>	<b>476</b>	<b>89.6</b>	<b>415</b>	<b>78.2</b>			
<b><u>Powys Teaching HB</u></b>																				
Unknown	59	48	81.4	43	72.9	28	47.5	19	15	78.9	12	63.2	39	33	84.6	31	79.5			
<b>Wales Total</b>	<b>8527</b>	<b>7801</b>	<b>91.5</b>	<b>7142</b>	<b>83.8</b>	<b>5301</b>	<b>62.2</b>	<b>4136</b>	<b>3786</b>	<b>91.5</b>	<b>3484</b>	<b>84.2</b>	<b>4387</b>	<b>4014</b>	<b>91.5</b>	<b>3657</b>	<b>83.4</b>			

\* Teenage booster dose of diphtheria, tetanus and polio (diphtheria used as proxy)

**Table 8.** MMR and Td/IPV vaccine uptake in children reaching their 16th birthday between 01/01/13 and 31/03/13 and resident on 31/03/13 (with breakdown of MMR1 and MMR2 coverage by sex).

Area	Resident children		MMR1		MMR2		Teenage 3 in 1 booster*		Resident girls		MMR1 (girls)		MMR2 (girls)		Resident boys		MMR1 (boys)		MMR2 (boys)	
	(n)	(n)	(%)	(n)	(%)	(n)	(%)	(n)	(n)	(n)	(%)	(n)	(%)	(n)	(n)	(n)	(%)	(n)	(%)	
<b>Abertawe Bro Morgannwg University HB</b>																				
Bridgend LA	445	412	92.6	387	87.0	373	83.8	209	191	91.4	183	87.6	236	221	93.6	204	86.4			
Neath Port Talbot LA	361	327	90.6	298	82.5	279	77.3	182	165	90.7	146	80.2	179	162	90.5	152	84.9			
Swansea LA	624	546	87.5	478	76.6	514	82.4	299	267	89.3	237	79.3	325	279	85.8	241	74.2			
<b>Health Board Total</b>	<b>1430</b>	<b>1285</b>	<b>89.9</b>	<b>1163</b>	<b>81.3</b>	<b>1166</b>	<b>81.5</b>	<b>690</b>	<b>623</b>	<b>90.3</b>	<b>566</b>	<b>82.0</b>	<b>740</b>	<b>662</b>	<b>89.5</b>	<b>597</b>	<b>80.7</b>			
<b>Aneurin Bevan HB</b>																				
Blaenau Gwent LA	187	167	89.3	149	79.7	148	79.1	88	76	86.4	69	78.4	99	91	91.9	80	80.8			
Caerphilly LA	560	504	90.0	440	78.6	449	80.2	276	244	88.4	203	73.6	284	260	91.5	237	83.5			
Monmouthshire LA	286	235	82.2	205	71.7	207	72.4	138	108	78.3	95	68.8	148	127	85.8	110	74.3			
Newport LA	483	424	87.8	376	77.8	355	73.5	234	204	87.2	176	75.2	248	220	88.7	200	80.6			
Torfaen LA	319	291	91.2	271	85.0	254	79.6	158	144	91.1	137	86.7	161	147	91.3	134	83.2			
<b>Health Board Total</b>	<b>1835</b>	<b>1621</b>	<b>88.3</b>	<b>1441</b>	<b>78.5</b>	<b>1413</b>	<b>77.0</b>	<b>894</b>	<b>776</b>	<b>86.8</b>	<b>680</b>	<b>76.1</b>	<b>940</b>	<b>845</b>	<b>89.9</b>	<b>761</b>	<b>81.0</b>			
<b>Betsi Cadwaladr University HB</b>																				
Anglesey LA	218	207	95.0	196	89.9	175	80.3	115	108	93.9	100	87.0	103	99	96.1	96	93.2			
Conwy LA	321	307	95.6	292	91.0	270	84.1	146	140	95.9	133	91.1	174	166	95.4	158	90.8			
Denbighshire LA	257	243	94.6	218	84.8	209	81.3	135	129	95.6	113	83.7	122	114	93.4	105	86.1			
Flintshire LA	436	416	95.4	390	89.4	366	83.9	216	206	95.4	197	91.2	220	210	95.5	193	87.7			
Gwynedd LA	356	341	95.8	321	90.2	295	82.9	163	153	93.9	147	90.2	193	188	97.4	174	90.2			
Wrexham LA	337	317	94.1	296	87.8	271	80.4	142	133	93.7	129	90.8	195	184	94.4	167	85.6			
<b>Health Board Total</b>	<b>1925</b>	<b>1831</b>	<b>95.1</b>	<b>1713</b>	<b>89.0</b>	<b>1586</b>	<b>82.4</b>	<b>917</b>	<b>869</b>	<b>94.8</b>	<b>819</b>	<b>89.3</b>	<b>1007</b>	<b>961</b>	<b>95.4</b>	<b>893</b>	<b>88.7</b>			
<b>Cardiff and Vale University HB</b>																				
Cardiff LA	957	856	89.4	772	80.7	675	70.5	433	387	89.4	350	80.8	524	469	89.5	422	80.5			
Vale of Glamorgan LA	400	357	89.3	338	84.5	317	79.3	199	175	87.9	165	82.9	201	182	90.5	173	86.1			
<b>Health Board Total</b>	<b>1357</b>	<b>1213</b>	<b>89.4</b>	<b>1110</b>	<b>81.8</b>	<b>992</b>	<b>73.1</b>	<b>632</b>	<b>562</b>	<b>88.9</b>	<b>515</b>	<b>81.5</b>	<b>725</b>	<b>651</b>	<b>89.8</b>	<b>595</b>	<b>82.1</b>			
<b>Cwm Taf HB</b>																				
Merthyr Tydfil LA	199	185	93.0	165	82.9	145	72.9	102	94	92.2	85	83.3	97	91	93.8	80	82.5			
Rhondda Cynon Taff LA	677	621	91.7	563	83.2	565	83.5	324	301	92.9	272	84.0	353	320	90.7	291	82.4			
<b>Health Board Total</b>	<b>876</b>	<b>806</b>	<b>92.0</b>	<b>728</b>	<b>83.1</b>	<b>710</b>	<b>81.1</b>	<b>426</b>	<b>395</b>	<b>92.7</b>	<b>357</b>	<b>83.8</b>	<b>450</b>	<b>411</b>	<b>91.3</b>	<b>371</b>	<b>82.4</b>			
<b>Hywel Dda HB</b>																				
Carmarthenshire LA	517	474	91.7	411	79.5	402	77.8	239	227	95.0	192	80.3	278	247	88.8	219	78.8			
Ceredigion LA	168	156	92.9	142	84.5	132	78.6	80	73	91.3	69	86.3	88	83	94.3	73	83.0			
Pembrokeshire LA	339	299	88.2	264	77.9	100	29.5	153	130	85.0	120	78.4	186	169	90.9	144	77.4			
<b>Health Board Total</b>	<b>1024</b>	<b>929</b>	<b>90.7</b>	<b>817</b>	<b>79.8</b>	<b>634</b>	<b>61.9</b>	<b>472</b>	<b>430</b>	<b>91.1</b>	<b>381</b>	<b>80.7</b>	<b>552</b>	<b>499</b>	<b>90.4</b>	<b>436</b>	<b>79.0</b>			
<b>Powys Teaching HB</b>	<b>360</b>	<b>309</b>	<b>85.8</b>	<b>264</b>	<b>73.3</b>	<b>280</b>	<b>77.8</b>	<b>171</b>	<b>149</b>	<b>87.1</b>	<b>132</b>	<b>77.2</b>	<b>189</b>	<b>160</b>	<b>84.7</b>	<b>132</b>	<b>69.8</b>			
Unknown	65	49	75.4	45	69.2	41	63.1	31	25	80.6	24	77.4	33	24	72.7	21	63.6			
<b>Wales Total</b>	<b>8872</b>	<b>8043</b>	<b>90.7</b>	<b>7281</b>	<b>82.1</b>	<b>6822</b>	<b>76.9</b>	<b>4233</b>	<b>3829</b>	<b>90.5</b>	<b>3474</b>	<b>82.1</b>	<b>4636</b>	<b>4213</b>	<b>90.9</b>	<b>3806</b>	<b>82.1</b>			

\* Teenage booster dose of diphtheria, tetanus and polio (diphtheria used as proxy).

**Table 9.** Uptake of HPV vaccine in girls reaching appropriate birthdays between 01/09/12 and 31/08/13 and resident in Wales on 31/03/13.

Area	15 years						16 years						17 years								
	Resident girls	1 dose	2 doses	3 doses	Resident girls	1 dose	2 doses	3 doses	Resident girls	1 dose	2 doses	3 doses	Resident girls	1 dose	2 doses	3 doses					
	(n)	(n)	(%)	(n)	(%)	(n)	(%)	(n)	(n)	(%)	(n)	(%)	(n)	(n)	(%)	(n)	(%)				
<b>ABM ULHB</b>																					
Bridgend LA	792	733	92.6	727	91.8	716	90.4	838	762	90.9	757	90.3	746	89.0	705	636	90.2	634	89.9	629	89.2
Neath Port Talbot LA	773	726	93.9	722	93.4	710	91.8	803	714	88.9	702	87.4	690	85.9	774	717	92.6	710	91.7	703	90.8
Swansea LA	1247	1130	90.6	1118	89.7	1100	88.2	1252	1082	86.4	1070	85.5	1057	84.4	1260	1167	92.6	1163	92.3	1153	91.5
<b>Health Board Total</b>	<b>2812</b>	<b>2589</b>	<b>92.1</b>	<b>2567</b>	<b>91.3</b>	<b>2526</b>	<b>89.8</b>	<b>2893</b>	<b>2558</b>	<b>88.4</b>	<b>2529</b>	<b>87.4</b>	<b>2493</b>	<b>86.2</b>	<b>2739</b>	<b>2520</b>	<b>92.0</b>	<b>2507</b>	<b>91.5</b>	<b>2485</b>	<b>90.7</b>
<b>Aneurin Bevan LHB</b>																					
Blaenau Gwent LA	401	365	91.0	360	89.8	355	88.5	398	374	94.0	370	93.0	364	91.5	410	395	96.3	394	96.1	384	93.7
Caerphilly LA	1038	937	90.3	922	88.8	902	86.9	1083	959	88.6	951	87.8	931	86.0	1038	958	92.3	952	91.7	936	90.2
Monmouthshire LA	504	381	75.6	377	74.8	370	73.4	590	451	76.4	444	75.3	438	74.2	548	418	76.3	415	75.7	339	61.9
Newport LA	985	843	85.6	833	84.6	819	83.1	945	781	82.6	779	82.4	766	81.1	915	776	84.8	770	84.2	733	80.1
Torfaen LA	573	517	90.2	518	90.4	513	89.5	608	550	90.5	549	90.3	542	89.1	556	521	93.7	519	93.3	510	91.7
<b>Health Board Total</b>	<b>3501</b>	<b>3043</b>	<b>86.9</b>	<b>3010</b>	<b>86.0</b>	<b>2959</b>	<b>84.5</b>	<b>3624</b>	<b>3115</b>	<b>86.0</b>	<b>3093</b>	<b>85.3</b>	<b>3041</b>	<b>83.9</b>	<b>3467</b>	<b>3068</b>	<b>88.5</b>	<b>3050</b>	<b>88.0</b>	<b>2902</b>	<b>83.7</b>
<b>Betsi Cadwaladr ULHB</b>																					
Anglesey LA	359	336	93.6	334	93.0	332	92.5	399	341	85.5	337	84.5	329	82.5	386	345	89.4	342	88.6	332	86.0
Conwy LA	609	563	92.4	562	92.3	540	88.7	595	534	89.7	531	89.2	511	85.9	596	533	89.4	532	89.3	529	88.8
Denbighshire LA	525	478	91.0	475	90.5	467	89.0	577	504	87.3	501	86.8	491	85.1	511	479	93.7	473	92.6	465	91.0
Flintshire LA	835	760	91.0	754	90.3	743	89.0	887	794	89.5	788	88.8	783	88.3	869	823	94.7	822	94.6	811	93.3
Gwynedd LA	605	536	88.6	534	88.3	531	87.8	681	577	84.7	573	84.1	567	83.3	624	544	87.2	540	86.5	528	84.6
Wrexham LA	715	647	90.5	641	89.7	636	89.0	653	574	87.9	570	87.3	565	86.5	721	681	94.5	675	93.6	669	92.8
<b>Health Board Total</b>	<b>3648</b>	<b>3320</b>	<b>91.0</b>	<b>3300</b>	<b>90.5</b>	<b>3249</b>	<b>89.1</b>	<b>3792</b>	<b>3324</b>	<b>87.7</b>	<b>3300</b>	<b>87.0</b>	<b>3246</b>	<b>85.6</b>	<b>3707</b>	<b>3405</b>	<b>91.9</b>	<b>3384</b>	<b>91.3</b>	<b>3334</b>	<b>89.9</b>
<b>Cardiff &amp; Vale ULHB</b>																					
Cardiff LA	1850	1618	87.5	1595	86.2	1521	82.2	1798	1528	85.0	1483	82.5	1424	79.2	1885	1631	86.5	1610	85.4	1551	82.3
Vale of Glamorgan LA	743	673	90.6	660	88.8	624	84.0	831	727	87.5	705	84.8	674	81.1	782	693	88.6	688	88.0	660	84.4
<b>Health Board Total</b>	<b>2593</b>	<b>2291</b>	<b>88.4</b>	<b>2255</b>	<b>87.0</b>	<b>2145</b>	<b>82.7</b>	<b>2629</b>	<b>2255</b>	<b>85.8</b>	<b>2188</b>	<b>83.2</b>	<b>2098</b>	<b>79.8</b>	<b>2667</b>	<b>2324</b>	<b>87.1</b>	<b>2298</b>	<b>86.2</b>	<b>2211</b>	<b>82.9</b>
<b>Cwm Taf LHB</b>																					
Merthyr Tydfil LA	330	301	91.2	299	90.6	295	89.4	380	344	90.5	340	89.5	325	85.5	357	339	95.0	336	94.1	331	92.7
Rhondda Cynon Taff LA	1288	1202	93.3	1185	92.0	1158	89.9	1320	1217	92.2	1206	91.4	1190	90.2	1289	1202	93.3	1196	92.8	1188	92.2
<b>Health Board Total</b>	<b>1618</b>	<b>1503</b>	<b>92.9</b>	<b>1484</b>	<b>91.7</b>	<b>1453</b>	<b>89.8</b>	<b>1700</b>	<b>1561</b>	<b>91.8</b>	<b>1546</b>	<b>90.9</b>	<b>1515</b>	<b>89.1</b>	<b>1646</b>	<b>1541</b>	<b>93.6</b>	<b>1532</b>	<b>93.1</b>	<b>1519</b>	<b>92.3</b>
<b>Hywel Dda LHB</b>																					
Cardiff LA	944	840	89.0	835	88.5	825	87.4	994	836	84.1	824	82.9	819	82.4	1002	910	90.8	907	90.5	888	88.6
Ceredigion LA	340	288	84.7	286	84.1	277	81.5	340	269	79.1	267	78.5	265	77.9	302	250	82.8	249	82.5	247	81.8
Pembrokeshire LA	644	559	86.8	556	86.3	542	84.2	659	565	85.7	558	84.7	543	82.4	663	584	88.1	579	87.3	573	86.4
<b>Health Board Total</b>	<b>1928</b>	<b>1687</b>	<b>87.5</b>	<b>1677</b>	<b>87.0</b>	<b>1644</b>	<b>85.3</b>	<b>1993</b>	<b>1670</b>	<b>83.8</b>	<b>1649</b>	<b>82.7</b>	<b>1627</b>	<b>81.6</b>	<b>1967</b>	<b>1744</b>	<b>88.7</b>	<b>1735</b>	<b>88.2</b>	<b>1708</b>	<b>86.8</b>
<b>Powys Teaching LHB</b>	<b>689</b>	<b>577</b>	<b>83.7</b>	<b>573</b>	<b>83.2</b>	<b>561</b>	<b>81.4</b>	<b>734</b>	<b>596</b>	<b>81.2</b>	<b>594</b>	<b>80.9</b>	<b>583</b>	<b>79.4</b>	<b>684</b>	<b>602</b>	<b>88.0</b>	<b>599</b>	<b>87.6</b>	<b>590</b>	<b>86.3</b>
Unknown	94	65	69.1	63	67.0	63	67.0	125	75	60.0	74	59.2	72	57.6	128	88	68.8	88	68.8	85	66.4
<b>Wales Total</b>	<b>16883</b>	<b>15075</b>	<b>89.3</b>	<b>14929</b>	<b>88.4</b>	<b>14600</b>	<b>86.5</b>	<b>17490</b>	<b>15154</b>	<b>86.6</b>	<b>14973</b>	<b>85.6</b>	<b>14675</b>	<b>83.9</b>	<b>17005</b>	<b>15292</b>	<b>89.9</b>	<b>15193</b>	<b>89.3</b>	<b>14834</b>	<b>87.2</b>

**Table 10.** Uptake of BCG immunisation in children reaching their 1<sup>st</sup>, 2<sup>nd</sup>, 5<sup>th</sup> and 16<sup>th</sup> birthdays between 01/01/13 and 31/03/13 and resident on 31/03/13.

Area	1 yr			2 yrs			5 yrs			16 yrs		
	Resident children (n)	BCG Immunised (n)	(%)	Resident children (n)	BCG Immunised (n)	(%)	Resident children (n)	BCG Immunised (n)	(%)	Resident children (n)	BCG Immunised (n)	(%)
<b>Abertawe Bro Morgannwg University</b>												
Bridgend LA	384	19	4.9	385	9	2.3	397	14	3.5	445	2	0.4
Neath Port Talbot LA	394	14	3.6	408	15	3.7	388	5	1.3	361	3	0.8
Swansea LA	708	56	7.9	632	67	10.6	734	83	11.3	624	12	1.9
<b>Health Board Total</b>	<b>1486</b>	<b>89</b>	<b>6.0</b>	<b>1425</b>	<b>91</b>	<b>6.4</b>	<b>1519</b>	<b>102</b>	<b>6.7</b>	<b>1430</b>	<b>17</b>	<b>1.2</b>
<b>Aneurin Bevan</b>												
Blaenau Gwent LA	170	6	3.5	180	5	2.8	199	6	3.0	187	1	0.5
Caerphilly LA	488	12	2.5	501	6	1.2	544	9	1.7	560	8	1.4
Monmouthshire LA	209	10	4.8	186	5	2.7	231	11	4.8	286	6	2.1
Newport LA	468	52	11.1	461	70	15.2	495	68	13.7	483	16	3.3
Torfaen LA	272	5	1.8	263	9	3.4	246	4	1.6	319	2	0.6
<b>Health Board Total</b>	<b>1607</b>	<b>85</b>	<b>5.3</b>	<b>1591</b>	<b>95</b>	<b>6.0</b>	<b>1715</b>	<b>98</b>	<b>5.7</b>	<b>1835</b>	<b>33</b>	<b>1.8</b>
<b>Betsi Cadwalladr University</b>												
Anglesey LA	199	3	1.5	167	4	2.4	186	4	2.2	218	3	1.4
Conwy LA	280	9	3.2	291	16	5.5	267	10	3.7	321	12	3.7
Denbighshire LA	251	10	4.0	273	9	3.3	282	11	3.9	257	6	2.3
Flintshire LA	394	11	2.8	372	18	4.8	456	23	5.0	436	7	1.6
Gwynedd LA	317	17	5.4	285	7	2.5	287	10	3.5	356	9	2.5
Wrexham LA	416	28	6.7	424	25	5.9	440	21	4.8	337	17	5.0
<b>Health Board Total</b>	<b>1857</b>	<b>78</b>	<b>4.2</b>	<b>1812</b>	<b>79</b>	<b>4.4</b>	<b>1918</b>	<b>79</b>	<b>4.1</b>	<b>1925</b>	<b>54</b>	<b>2.8</b>
<b>Cardiff and Vale University</b>												
Cardiff LA	1199	239	19.9	1137	227	20.0	1128	256	22.7	957	93	9.7
Vale of Glamorgan LA	346	11	3.2	354	10	2.8	364	16	4.4	400	8	2.0
<b>Health Board Total</b>	<b>1545</b>	<b>250</b>	<b>16.2</b>	<b>1491</b>	<b>237</b>	<b>15.9</b>	<b>1492</b>	<b>272</b>	<b>18.2</b>	<b>1357</b>	<b>101</b>	<b>7.4</b>
<b>Cwm Taf</b>												
Merthyr Tydfil LA	184	15	8.2	173	10	5.8	175	3	1.7	199	5	2.5
Rhondda Cynon Taff LA	670	20	3.0	759	25	3.3	640	16	2.5	677	10	1.5
<b>Health Board Total</b>	<b>854</b>	<b>35</b>	<b>4.1</b>	<b>932</b>	<b>35</b>	<b>3.8</b>	<b>815</b>	<b>19</b>	<b>2.3</b>	<b>876</b>	<b>15</b>	<b>1.7</b>
<b>Hywel Dda</b>												
Carmarthenshire LA	513	17	3.3	486	16	3.3	497	17	3.4	517	5	1.0
Ceredigion LA	150	8	5.3	147	5	3.4	147	7	4.8	168	5	3.0
Pembrokeshire LA	358	11	3.1	339	7	2.1	324	9	2.8	339	2	0.6
<b>Health Board Total</b>	<b>1021</b>	<b>36</b>	<b>3.5</b>	<b>972</b>	<b>28</b>	<b>2.9</b>	<b>968</b>	<b>33</b>	<b>3.4</b>	<b>1024</b>	<b>12</b>	<b>1.2</b>
<b>Powys Teaching Health Board</b>	<b>274</b>	<b>2</b>	<b>0.7</b>	<b>272</b>	<b>7</b>	<b>2.6</b>	<b>293</b>	<b>4</b>	<b>1.4</b>	<b>360</b>	<b>1</b>	<b>0.3</b>
Unknown	28	1	3.6	33	1	3.0	41	0	0.0	65	3	4.6
<b>Wales Total</b>	<b>8672</b>	<b>576</b>	<b>6.6</b>	<b>8528</b>	<b>573</b>	<b>6.7</b>	<b>8761</b>	<b>607</b>	<b>6.9</b>	<b>8872</b>	<b>236</b>	<b>2.7</b>

Data reflects immunisations given and recorded on the NCCHD (following notifications to local Child Health Administration Offices), may be subject to under-reporting. BCG is not a routinely scheduled immunisation.

**Table 11.** Uptake of hepatitis B immunisation in children receiving their first dose within seven days of birth, reaching their 1<sup>st</sup>, 2<sup>nd</sup>, 5<sup>th</sup> and 16<sup>th</sup> birthdays during 01/01/13 and 31/03/13 and resident on 31/03/13, and percentage who are recorded as completing doses 1 to 3.

Area	1yr					2yrs					5yrs					16yrs				
	Resident children	HepB dose 1	HepB dose 2	HepB dose 3	Completed 3 doses (%)	Resident children	HepB dose 1	HepB dose 2	HepB dose 3	Completed 3 doses (%)	Resident children	HepB dose 1	HepB dose 2	HepB dose 3	Completed 3 doses (%)	Resident children	HepB dose 1	HepB dose 2	HepB dose 3	Completed 3 doses (%)
<b>Abertawe Bro Morgannwg University</b>	(n)	(n)	(n)	(n)	(%)	(n)	(n)	(n)	(n)	(%)	(n)	(n)	(n)	(n)	(%)	(n)	(n)	(n)	(n)	(%)
Bridgend LA	384	1	1	1	100.0	385	5	5	4	80.0	397	2	1	1	50.0	445	1	1	1	100.0
Neath Port Talbot LA	394	3	3	2	66.7	408	2	2	2	100.0	388	1	1	1	100.0	361	1	1	1	100.0
Swansea LA	708	9	8	7	77.8	632	5	5	4	80.0	734	14	13	9	64.3	624	1	1	1	100.0
<b>Health Board Total</b>	<b>1486</b>	<b>13</b>	<b>12</b>	<b>10</b>	<b>76.9</b>	<b>1425</b>	<b>12</b>	<b>12</b>	<b>10</b>	<b>83.3</b>	<b>1519</b>	<b>17</b>	<b>15</b>	<b>11</b>	<b>64.7</b>	<b>1430</b>	<b>3</b>	<b>3</b>	<b>3</b>	<b>100.0</b>
<b>Aneurin Bevan</b>																				
Blaenau Gwent LA	170	1	1	1	100.0	180	2	2	2	100.0	199	0	0	0	-	187	0	0	0	-
Caerphilly LA	488	2	1	1	50.0	501	3	2	0	0.0	544	2	2	2	100.0	560	0	0	0	-
Monmouthshire LA	209	1	1	1	100.0	186	2	2	2	100.0	231	2	2	1	50.0	286	0	0	0	-
Newport LA	468	3	2	2	66.7	461	12	12	10	83.3	495	9	6	3	33.3	483	1	1	1	100.0
Torfaen LA	272	1	1	1	100.0	263	0	0	0	-	246	0	0	0	-	319	0	0	0	-
<b>Health Board Total</b>	<b>1607</b>	<b>8</b>	<b>6</b>	<b>6</b>	<b>75.0</b>	<b>1591</b>	<b>19</b>	<b>18</b>	<b>14</b>	<b>73.7</b>	<b>1715</b>	<b>13</b>	<b>10</b>	<b>6</b>	<b>46.2</b>	<b>1835</b>	<b>1</b>	<b>1</b>	<b>1</b>	<b>100.0</b>
<b>Betsi Cadwalladr University</b>																				
Anglesey LA	199	0	0	0	-	167	0	0	0	-	186	1	1	1	100.0	218	0	0	0	-
Conwy LA	280	0	0	0	-	291	0	0	0	-	267	1	1	1	100.0	321	1	1	1	100.0
Denbighshire LA	251	0	0	0	-	273	0	0	0	-	282	1	1	1	100.0	257	0	0	0	-
Flintshire LA	394	2	2	1	50.0	372	2	2	1	50.0	456	3	3	3	100.0	436	0	0	0	-
Gwynedd LA	317	1	1	1	100.0	285	0	0	0	-	287	3	3	3	100.0	356	1	1	1	100.0
Wrexham LA	416	2	2	2	100.0	424	1	1	1	100.0	440	4	4	3	75.0	337	1	1	1	100.0
<b>Health Board Total</b>	<b>1857</b>	<b>5</b>	<b>5</b>	<b>4</b>	<b>80.0</b>	<b>1812</b>	<b>3</b>	<b>3</b>	<b>2</b>	<b>66.7</b>	<b>1918</b>	<b>13</b>	<b>13</b>	<b>12</b>	<b>92.3</b>	<b>1925</b>	<b>3</b>	<b>3</b>	<b>3</b>	<b>100.0</b>
<b>Cardiff and Vale University</b>																				
Cardiff LA	1199	11	10	7	63.6	1137	15	14	13	86.7	1128	28	26	24	85.7	957	6	6	5	83.3
Vale of Glamorgan LA	346	0	0	0	-	354	1	1	0	0.0	364	3	3	3	100.0	400	2	2	1	50.0
<b>Health Board Total</b>	<b>1545</b>	<b>11</b>	<b>10</b>	<b>7</b>	<b>63.6</b>	<b>1491</b>	<b>16</b>	<b>15</b>	<b>13</b>	<b>81.3</b>	<b>1492</b>	<b>31</b>	<b>29</b>	<b>27</b>	<b>87.1</b>	<b>1357</b>	<b>8</b>	<b>8</b>	<b>6</b>	<b>75.0</b>
<b>Cwm Taf</b>																				
Merthyr Tydfil LA	184	0	0	0	-	173	1	0	0	0.0	175	1	1	1	100.0	199	2	2	2	100.0
Rhondda Cynon Taff LA	670	3	2	2	66.7	759	3	3	2	66.7	640	2	1	1	50.0	677	1	0	0	0.0
<b>Health Board Total</b>	<b>854</b>	<b>3</b>	<b>2</b>	<b>2</b>	<b>66.7</b>	<b>932</b>	<b>4</b>	<b>3</b>	<b>2</b>	<b>50.0</b>	<b>815</b>	<b>3</b>	<b>2</b>	<b>2</b>	<b>66.7</b>	<b>876</b>	<b>3</b>	<b>2</b>	<b>2</b>	<b>66.7</b>
<b>Hywel Dda</b>																				
Carmarthenshire LA	513	1	1	1	100.0	486	4	3	3	75.0	497	4	4	4	100.0	517	0	0	0	-
Ceredigion LA	150	0	0	0	-	147	1	1	1	100.0	147	0	0	0	-	168	0	0	0	-
Pembrokeshire LA	358	2	2	1	50.0	339	0	0	0	-	324	2	2	1	50.0	339	0	0	0	-
<b>Health Board Total</b>	<b>1021</b>	<b>3</b>	<b>3</b>	<b>2</b>	<b>66.7</b>	<b>972</b>	<b>5</b>	<b>4</b>	<b>4</b>	<b>80.0</b>	<b>968</b>	<b>6</b>	<b>6</b>	<b>5</b>	<b>83.3</b>	<b>1024</b>	<b>0</b>	<b>0</b>	<b>0</b>	<b>-</b>
<b>Powys Teaching Health Board</b>	<b>274</b>	<b>0</b>	<b>0</b>	<b>0</b>	<b>-</b>	<b>272</b>	<b>2</b>	<b>2</b>	<b>1</b>	<b>50.0</b>	<b>293</b>	<b>5</b>	<b>4</b>	<b>2</b>	<b>40.0</b>	<b>360</b>	<b>0</b>	<b>0</b>	<b>0</b>	<b>-</b>
Unknown	28	0	0	0	-	33	0	0	0	-	41	0	0	0	-	65	0	0	0	-
<b>Wales Total</b>	<b>8672</b>	<b>43</b>	<b>38</b>	<b>31</b>	<b>72.1</b>	<b>8528</b>	<b>61</b>	<b>57</b>	<b>46</b>	<b>75.4</b>	<b>8761</b>	<b>88</b>	<b>79</b>	<b>65</b>	<b>73.9</b>	<b>8872</b>	<b>18</b>	<b>17</b>	<b>15</b>	<b>83.3</b>

Data reflects immunisations given and recorded on the NCCHD (following notifications to local Child Health Administration Offices), may be subject to under-reporting. Hepatitis B is not a routinely scheduled immunisation. Only children who receive the first dose of hepatitis B vaccine within seven days of birth (suggesting high risk status) are included in this table