

Vaccine Uptake in Children in Wales January to March 2016

COVER 118: Wales May 2016



Key points

- For children at one year of age, uptake of the “5 in 1”, MenC and pneumococcal conjugate vaccines all exceeded 95% this quarter. Uptake of the “5 in 1” vaccine was 95% or over in all Health Boards (HB) and in 19 local authority (LA) areas.
- Uptake of two doses of rotavirus vaccine was 94%. Two Health Boards and five LA areas had an uptake above 95%.
- Uptake of the first dose of MMR vaccine in two year old children remained above 95% this quarter. Four Health Boards and 13 LA areas achieved an uptake of 95%.
- By four years of age, 86% of children were up to date with all routine immunisations. The proportion of children who were up to date exceeded 90% in four LA areas. For children reaching their fifth birthday 89% were up to date.
- Uptake of the second MMR dose by five years of age was 91%.
- Uptake of the “4 in 1” pre-school booster in five year old children remained at 92% this quarter.
- Uptake of the first dose of the new two dose Human Papillomavirus (HPV) vaccine schedule in girls in the current 2015-16 School Year 9 increased from 88% last quarter to 90% this quarter.
- Uptake of MenC containing vaccine in 15 year olds increased to 83%.
- Coverage of one dose of MMR vaccine in 15 year olds was 93% and coverage of a completed two dose course was 88%.
- Coverage of the Td/IPV teenage booster in 15 year olds was 83%.

These results are for children living in Wales in March 2016 and reaching their first, second, fourth, fifth, 15th and 16th birthdays during the quarter 01/01/2016 to 31/03/2016. Current uptake of HPV vaccination¹ dose 1 in girls in the 2015-16 School Year 8 (reaching their 13th birthday between 01/09/2015 and 31/08/2016) is presented, along with coverage of the previous School Year 8 group. Both of these school year groups will have been on the new, two dose HPV vaccine schedule. Coverage of HPV in older girls, who would have been on the previous three dose HPV vaccine schedule, is also presented. BCG and hepatitis B immunisation uptake data are also presented here. BCG and hepatitis B immunisations are not part of the routine childhood schedule and are given selectively following risk assessment; further information on circumstances in which these immunisations should be given can be found in: Immunisation Against Infectious Disease (The Green Book, available from <http://immunisation.dh.gov.uk/category/the-green-book/>). Coverage of neonatal hepatitis B immunisation is presented here, using data from the Public Health Wales Neonatal Hepatitis B database.

Findings

1. Uptake of all three doses of the combined “5 in 1” DTaP/IPV/Hib² vaccine, scheduled at 2, 3 and 4 months of age, in children reaching their first birthday remained stable this quarter at 96.3%. Uptake ranged by Health Board from 95.0% (Cardiff and Vale UHB) to 98.0% (Powys THB) and by Local Authority (LA) from 92.4% (Pembrokeshire) to 98.5% (Blaenau Gwent). All seven Health Boards and 19 of the 22 LA areas achieved the target 95% uptake (Figures 2 and 5, Tables 2 and 3).

¹ HPV vaccination protects girls against cervical cancer associated with HPV types 16 and 18.

² DTaP/IPV/Hib vaccine protects against Diphtheria, Tetanus, Pertussis (Whooping Cough), Polio and Hib infection.

2. National uptake of a completed one dose course of MenC³ vaccine in children reaching their first birthday this quarter was 97.6% compared to 97.9% last quarter. Uptake in Health Boards ranged from 96.6% (Hywel Dda UHB and Cardiff and Vale UHB) to 98.5% (Cwm Taf UHB) and ranged by LA from 94.4% (Pembrokeshire) to 99.5% (Blaenau Gwent). All seven Health Boards and 21 LA areas achieved an uptake in excess of the 95% target (Figures 1 and 2, Tables 2 and 3).
3. Uptake of a complete two dose primary course of pneumococcal conjugate vaccination (PCV2³) in children reaching their first birthday was 96.3% this quarter compared to 96.8% last quarter, ranging by LA from 92.7% (Pembrokeshire) to 99.5% (Blaenau Gwent). Six Health Boards and 18 LA areas achieved the target 95% uptake (Figures 1 and 2, Table 3).
4. Uptake of two doses of rotavirus vaccine in children reaching their first birthday increased from 93.7% last quarter to 93.9% this quarter. Uptake in Health Boards ranged from 92.1% (Hywel Dda UHB) to 96.7% (Cwm Taf UHB) and ranged by LA from 88.4% (Pembrokeshire) to 98.9% (Merthyr Tydfil) (Figure 2, Tables 2 and 3).
5. Uptake of the first dose of MMR⁴ in children reaching their second birthday (scheduled at 12 to 13 months of age) was 95.5% this quarter compared to 95.2% last quarter. Uptake ranged by Health Board from 93.5% (Hywel Dda UHB) to 97.5% (Cwm Taf UHB) and by LA area from 91.6% (Ceredigion) to 97.7% (Anglesey) (Figures 1, 2 and 6, Tables 2 and 4). Four Health Boards and 13 LA areas achieved the target of 95% uptake.
6. Uptake of the final dose of Pneumococcal Conjugate Vaccine (PCVf, scheduled at 12 to 13 months of age) in children reaching their second birthday remained stable at 95.9% this quarter. Uptake by LA ranged from 90.4% (Ceredigion) to 98.2% (Rhonda Cynon Taf and Blaenau Gwent) (Figure 2, Tables 2 and 4). Five Health Boards and 15 LA areas achieved an uptake of 95% or over.
7. Uptake of the Hib/MenC booster (given at 12 to 13 months of age) in children reaching two years of age remained at 95.0% this quarter. Uptake ranged by Health Board from 93.2% (Cardiff and Vale UHB) to 97.5% (Cwm Taf UHB), and ranged by LA from 91.0% (Ceredigion) to 98.2% (Blaenau Gwent) (Tables 2 and 4). Fifteen LA areas achieved uptakes in excess of 95% (Figures 1 and 2).
8. In children reaching four years of age this quarter, coverage of the "4 in 1" DTaP/IPV⁵ pre-school booster remained stable at 89.2%, compared to 89.6% last quarter. Coverage of the Hib/MenC booster was 94.5% and uptake of two doses of MMR decreased to 87.9%, compared to 88.8% last quarter (Table 5). The proportion of children who were up to date with all these routine immunisations at four years of age decreased to 86.2% this quarter from 86.8% last quarter. This ranged by Health Board from 81.9% (Aneurin Bevan UHB) to 90.1% (Cwm Taf UHB) and by LA from 74.9% (Newport) to 92.7% (Anglesey) (Figure 3, Tables 1 and 5). The proportion of children who were up to date with the above immunisations by their 5th birthday remained stable at 89.0% this quarter compared to 89.1% last quarter, ranging by health board from 86.4% (Cardiff and Vale UHB) to 92.3% (Betsi Cadwaladr UHB) (Table 6).
9. In children reaching five years of age this quarter, coverage of one dose of MMR was 97.0%. Uptake of two doses of MMR decreased to 91.4% this quarter, compared to 91.9%, last quarter (Table 7). Uptake of two doses of MMR ranged by Health Board from 89.2% (Cardiff and Vale UHB) to 93.2% (Betsi Cadwaladr UHB) and by LA from 87.5%

³ MenC vaccine protects against meningitis caused by meningococcus group C infection. PCV protects against pneumococcal meningitis, bacteraemia, pneumonia and otitis media. Children reaching one and two years of age this quarter have been scheduled for the two dose course of pneumococcal conjugate vaccination (PCV) at two and four months of age and a one dose MenC primary course scheduled at three months of age. Children reaching 2 years of age this quarter should have been offered a routine dose of the Hib/ MenC and PCV at 12 to 13 months of age.

⁴ MMR protects against measles, mumps and rubella infections.

⁵ DTaP/IPV (and dTaP/IPV) vaccines boost protection against Diphtheria, Tetanus, Pertussis and Polio infection before school entry.

(Pembrokeshire) to 95.6% (Wrexham) (Figures 1 and 2, Tables 2 and 7). Two LA areas exceeded 95% uptake for two doses of MMR by five years of age (Figure 7).

10. Uptake of the “4 in 1” DTaP/IPV⁵ pre-school booster in children reaching their fifth birthday remained stable at 92.4% this quarter compared to 92.3% in the previous quarter, ranging by Health Board from 90.7% (Abertawe Bro Morgannwg UHB) to 95.6% (Betsi Cadwaladr UHB) and by LA from 88.5% (Newport) to 97.5% (Wrexham) (Tables 2, 7). Five LAs achieved the 95% uptake target (Figure 8).
11. Coverage of a two dose primary course of MenC in children reaching their fifth birthday this quarter was 94.3%, compared to 94.5% last quarter. Coverage ranged by Health Board from 92.0% (Powys THB) to 97.6% (Cwm Taf UHB) and by LA from 91.0% (Ceredigion) to 97.8% (Rhondda Cynon Taf) (Table 7).
12. From September 2014, the HPV vaccination programme changed for School Year 8 girls from a three dose to a two dose schedule following a Joint Committee on Vaccination and Immunisation (JCVI) recommendation. In the revised schedule, the first dose of HPV should be given to girls during School Year 8 with JCVI recommending a gap of 12 months before the second dose of HPV is received. Further information on the changes to the HPV vaccination programme can be found within the [CMO\(2014\)13](#) letter. Timings of school vaccination sessions for the first dose vary in health boards throughout school year 8. Vaccination sessions for girls in the 2015-16 School Year 8 group with HPV dose 1 are now complete for the second quarter of the school year. Currently 55.1% of girls in this group have been vaccinated compared to 8.8% as reported in the previous quarter (Table 8). Reported uptake in this year group will continue to increase over the next two quarters as more vaccination sessions are carried out in all areas. Current school Year 9 girls (turning 14 years of age during 01/09/15 to 31/08/2016) were the first School Year 8 group to be offered the two dose HPV schedule and should now have received dose 1. Uptake of the first dose in this group has increased from 87.9% last quarter to 89.6% this quarter (Table 8). Coverage of HPV dose 2 in the 2015-16 School Year 9 group is currently 66.6%. As with the current year 8 girls receiving their first dose, coverage will increase over the next two quarters as vaccination sessions are carried out.
13. Coverage of vaccination with MenC containing vaccine⁶ in teenagers at their 15th birthday increased to 82.6% from 81.5% last quarter. Coverage ranged by Health Board from 75.9% (Cardiff and Vale UHB) to 93.0% (Cwm Taf HB) and by LA from 70.5% (Pembrokeshire) to 93.1% (Rhondda Cynon Taf) (Table 9). The majority of these children are recorded as having received single antigen MenC vaccine, however a small number are recorded as having received the MenACWY vaccine which it was announced that the programme will move to using.
14. Coverage of the Td/IPV⁷ teenage booster in children reaching 15 years of age this quarter increased 83.2%, compared to 82.4% last quarter. Coverage ranged by Health Board from 76.2% (Cardiff & Vale UHB) to 92.0% (Cwm Taf UHB) and ranged by LA from 72.7% (Pembrokeshire) to 92.1% (Rhondda Cynon Taf) (Table 9).
15. Coverage of two doses of MMR in children reaching 16 years of age decreased to 89.1% this quarter, compared to 90.2% last quarter, ranging by LA from 82.7% (Denbighshire) to 93.5% (Wrexham). Coverage of one dose of MMR decreased to 94.3% this quarter, from 94.8% last quarter. Coverage of a full course (two doses of MMR) of immunisation against rubella in 16 year old girls this quarter decreased to 90.2% this quarter compared to 91.3% last quarter. Coverage of one dose decreased to 94.8% this quarter, compared to 95.2% last quarter. National coverage of the Td/IPV⁷ teenage booster in children reaching 16 years of age increased to 84.5%, compared to 83.6% last quarter (Tables 2 and 10).

⁶ Either MenC booster or MenACWY

⁷Td/IPV boosts protection against Diphtheria, Tetanus and Polio infection before entering adulthood

⁸ BCG protects against tuberculosis infection.

⁹ Numbers of eligible children for BCG are not known

16. Coverage in the 2015-16 cohort of year 10 girls (girls reaching their 15th birthday during 01/09/15 to 31/08/16) of a complete three dose course of HPV vaccine is currently 84.8%. Coverage of a complete three dose course of HPV vaccine in girls reaching their 16th birthday during 01/09/15 to 31/08/16 (2015-16 year 11) is currently 86.8%. Coverage of a complete three dose course of HPV vaccine in girls reaching their 17th birthday during 01/09/15 to 31/08/16 (2015-16 year 12) is currently 87.0% (Table 11). The 2015-16 school year 10 was the last group to be offered the three dose schedule of HPV. A very small minority of girls who started their vaccination course late would be on the two dose schedule and as such will never expect to have a third dose. Although appropriate for the vast majority of girls within this group, this should be kept in mind if using uptake of three doses to indicate a completed HPV course in this group.
17. Uptake of BCG⁸ immunisation is presented in Table 12. These data are based on BCG immunisations recorded in the National Community Child Health Database. BCG immunisation has been received by 5.3%, 7.1%, 6.9% and 4.0% of children reaching their first, second, fifth and 16th birthdays (respectively) during quarter four 2015⁹. This quarter Swansea LA had the highest proportions of children given BCG by one year of age (15.4%) and Cardiff LA had the highest proportions of children given BCG by two years of age (18.1%).
18. Uptake data for hepatitis B immunisation, extracted from the Public Health Wales All Wales Neonatal Hepatitis B immunisation database, is presented in Table 13. Uptake of three doses of hepatitis B vaccine in children who were at risk of perinatal infection and reached their first birthday this quarter was 95.5%. Uptake of four doses of hepatitis B vaccine in children who were at risk of perinatal infection and reached their second birthday this quarter was 60.0%. Uptake of four doses of hepatitis B vaccine in children who were at risk of perinatal infection and reached their fifth birthday this quarter was 100%.

Comment

Uptake of routine vaccination in children at one and two years of age at an all Wales level remained high and stable this quarter. Uptake of all routine primary immunisations in babies reaching their first birthday exceeded 95% again this quarter, except for rotavirus (which can't be given beyond 24 weeks of age), although uptake of all three doses of the combined "5 in 1" DTaP/IPV/Hib was below 95% in three Local Authorities. MMR uptake was stable this quarter and remained above 95% in children reaching their second birthday, although uptake varies by health board and local authority area.

This quarter saw a slight decrease in the proportion of children who were up to date with their routine immunisations by four years of age, with wide variation between health boards and local authority areas. The proportion of children who were up to date with their immunisations by five years of age remained stable compared to last quarter, slightly below 90% at a national level.

There continues to be a significant downward trend in uptake of the second dose of MMR in children reaching five years of age. Follow up of those who have consent but do not attend when invited and immunisation status checks both opportunistically and as routine at school entry, remain key in maintaining and improving coverage and averting future cases and outbreaks of measles, mumps and rubella.

During 2015 there were considerable changes to the schedule of routine childhood vaccinations in Wales: the addition of routine vaccination against meningococcal group B disease [1], a move from single antigen meningococcal group C vaccine to meningococcal ACWY vaccine in teenagers (with a phased catch-up campaign) [2] and a change in the HPV schedule for teenage girls [3]. This report contains figures for uptake of the second dose of HPV vaccine in the first school year group who were offered the new two dose schedule, girls currently in 2015-16 school year 9. Uptake presented here represents a snapshot in progress and will increase over the next two quarters as more vaccination sessions take place. Uptakes for MenB and MenACWY vaccination will be reported in future COVER reports as eligible children reach the appropriate birthdays.

[1] Welsh Government (2015) Introduction of MenB Immunisation for Infants, Welsh Health Circular. WHC(2015)040. <http://gov.wales/docs/dhss/publications/150727whc040en.pdf>

[2] Welsh Government (2015) Meningococcal ACWY conjugate vaccination (MenACWY) - Revision, Welsh Health Circular. WHC(2015)037. <http://gov.wales/docs/dhss/publications/150724whc037en.pdf>

[3] Welsh Government (2014) Changes to the Human Papillomavirus (HPV) vaccination programme from September 2014, CMO letter (2014) 13.

<http://gov.wales/docs/phhs/publications/140707vaccinationen.pdf>

[4] Public Health Wales Health Protection Division. Vaccine uptake in Children in Wales, October to December 2014: COVER report 113, March 2015. Cardiff, Public Health Wales

[http://www2.nphs.wales.nhs.uk:8080/VaccinationsImmunisationProgsDocs.nsf/3dc04669c9e1eaa880257062003b246b/9a1fa7447e38bc8af80257e15004b9635/\\$FILE/Cov14q4%20\(Report113\)_v1.pdf](http://www2.nphs.wales.nhs.uk:8080/VaccinationsImmunisationProgsDocs.nsf/3dc04669c9e1eaa880257062003b246b/9a1fa7447e38bc8af80257e15004b9635/$FILE/Cov14q4%20(Report113)_v1.pdf)

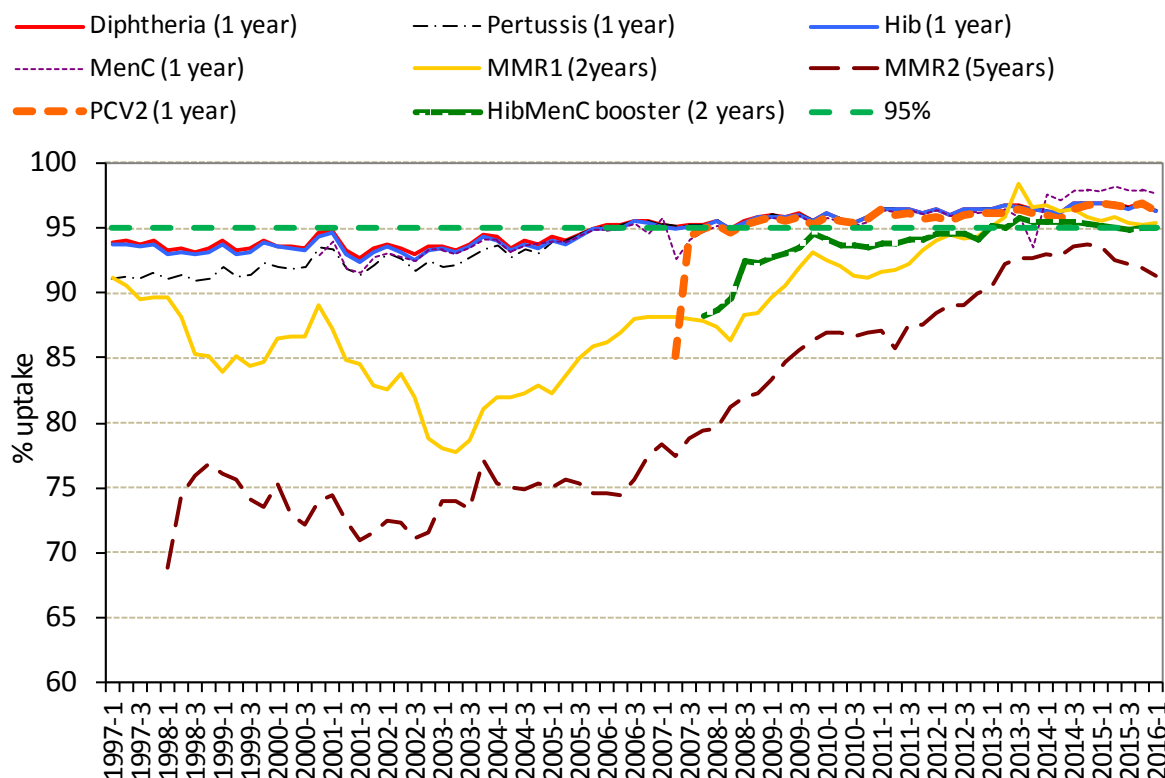
Report prepared by Public Health Wales Vaccine Preventable Disease Programme and Communicable Disease Surveillance Centre.

Data for this report was provided by NHS Wales Informatics Service from the National Community Child Health Database (NCCHD). The data was sourced from Community Child Health databases maintained by local Child Health Office staff in Trusts throughout Wales based on regular returns from doctors and nurses who immunise or advise on immunisation. Uptake data presented throughout are for HB resident population, not for HB GP practice populations. The maps, graphs, tables 1 and 2 are best viewed in colour.

Suggested citation for this report: Public Health Wales Health Protection Division. Vaccine uptake in Children in Wales, January to March 2016: COVER report 118, May 2016. Cardiff, Public Health Wales.

For further information on this report please contact: surveillance.requests@wales.nhs.uk

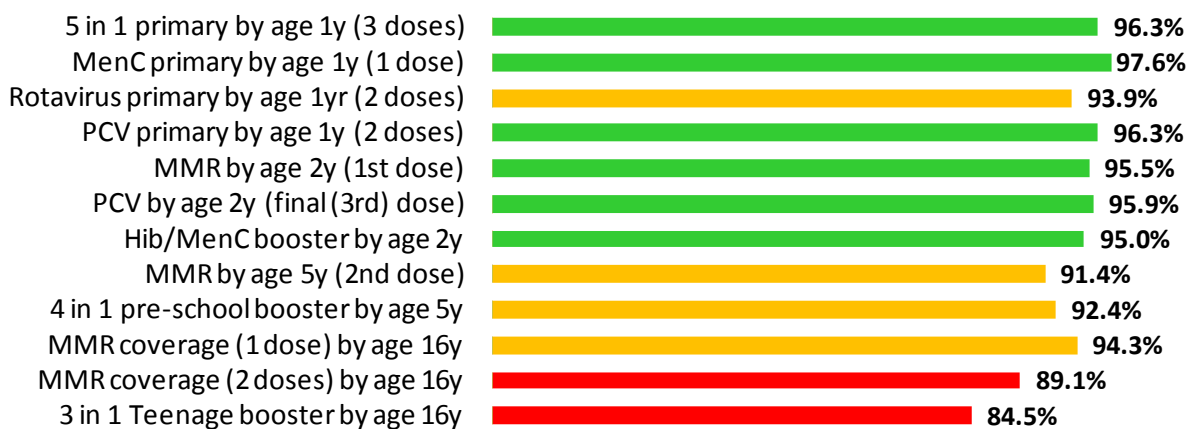
Figure 1. Percentage uptake of childhood immunisations in Wales, quarter 1 1997 to quarter 1 2016*. Data are for children reaching 1 year of age each quarter for diphtheria, pertussis, Hib, MenC⁹ and pneumococcal conjugate vaccine (PCV2), children reaching 2 years of age for MMR1 (first dose) and the Hib/MenC booster, and 5 years of age for MMR2 (second dose).



* Uptake data for quarter 3 2014 to quarter 4 2014 presented here are based on estimates calculated in August 2015, rather than published data, due to data quality problems affecting reported uptake of some immunisations in reports published during this period.

Figure 2. Summary of uptake rates for selected immunisations⁹ in resident children reaching their 1st, 2nd, 5th and 16th birthday between 01/01/16 and 31/03/16 and resident on 31/03/16.

All Wales Summary - COVER118



⁹ MenC uptake for children reaching one year of age is based on a completed one dose course of MenC vaccination.

Figure 3. Percentage uptake of resident children reaching their 4th birthday between 01/01/16 and 31/03/16 and are up to date with all scheduled vaccines¹⁰ by Health Board.

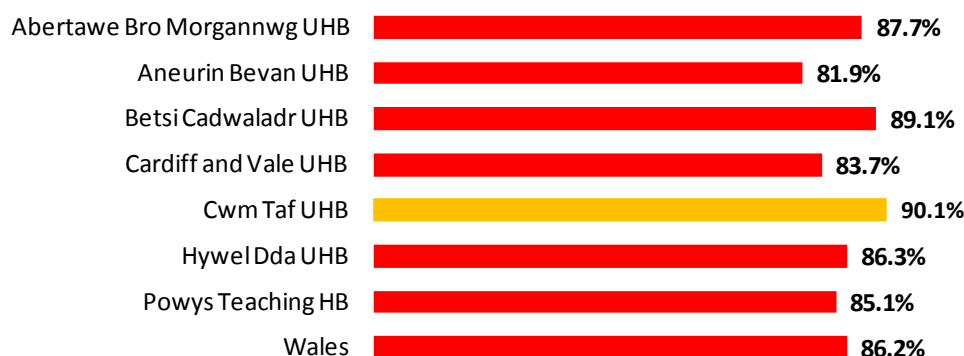
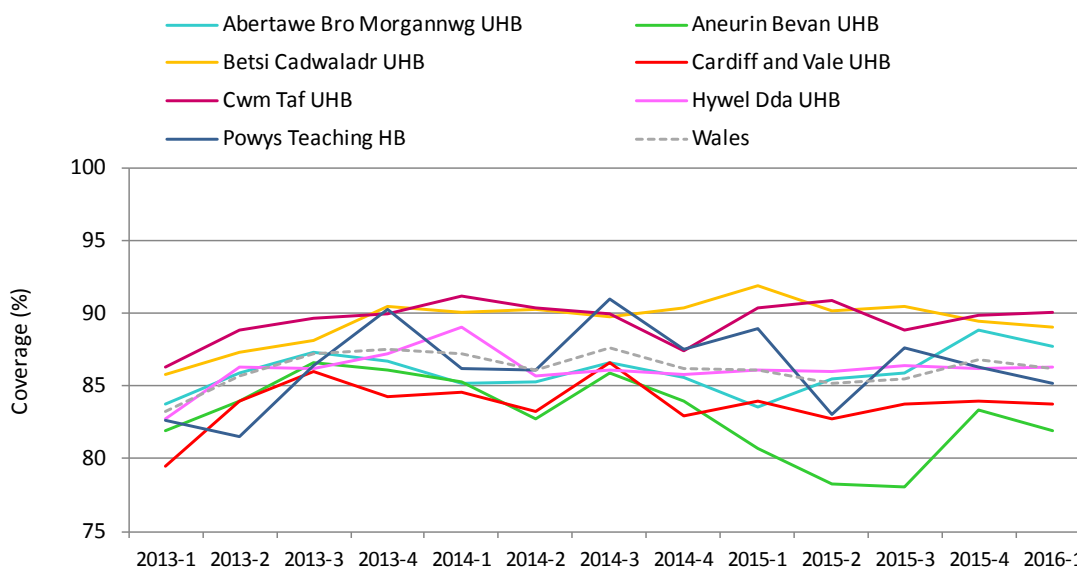


Table 1. Percentages of resident children reaching their 4th birthday during quarter 1 2015 to quarter 1 2016* who are up to date with all scheduled vaccines¹⁰, by Health Board.

Area	Up to date in schedule				
	2015-1	2015-2	2015-3	2015-4	2016-1
Abertawe Bro Morgannwg UHB	83.6	85.5	85.9	88.8	87.7
Aneurin Bevan UHB	80.7	78.3	78.1	83.4	81.9
Betsi Cadwaladr UHB	91.9	90.2	90.5	89.5	89.1
Cardiff and Vale UHB	84.0	82.7	83.7	84.0	83.7
Cwm Taf UHB	90.3	90.9	88.7	89.9	90.1
Hywel Dda UHB	86.1	86.0	86.4	86.2	86.3
Powys Teaching HB	88.9	83.0	87.7	86.3	85.1
Wales	86.1	85.1	85.5	86.8	86.2

Figure 4. Trends in the percentages of children reaching their 4th birthday who are up to date with all scheduled vaccines¹⁰, by Health Board*.



* Uptake data for quarter 3 2014 to quarter 4 2014 presented here are based on estimates calculated in August 2015, rather than published data, due to data quality problems affecting reported uptake of some immunisations in reports published during this period.

¹⁰ Completed "4 in 1" preschool booster, the Hib/MenC booster and second MMR dose by four years of age. The calculation method for proportions of children up to date with routine immunisation by four years of age was revised during 2014 quarter 1, to remove the pneumococcal conjugate vaccine booster dose, as this is not clinically indicated after two years of age.

Figure 5. Uptake of “5 in 1” vaccine in Welsh Local Authority areas in children reaching their 1st birthday between 01/01/16 and 31/03/16.

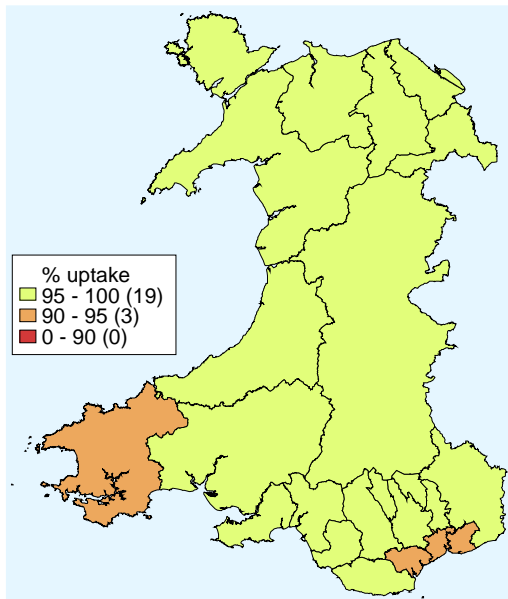


Figure 6. Uptake of at least 1 dose of MMR immunisation in Welsh Local Authority areas in children reaching their 2nd birthday between 01/01/16 and 31/03/16.

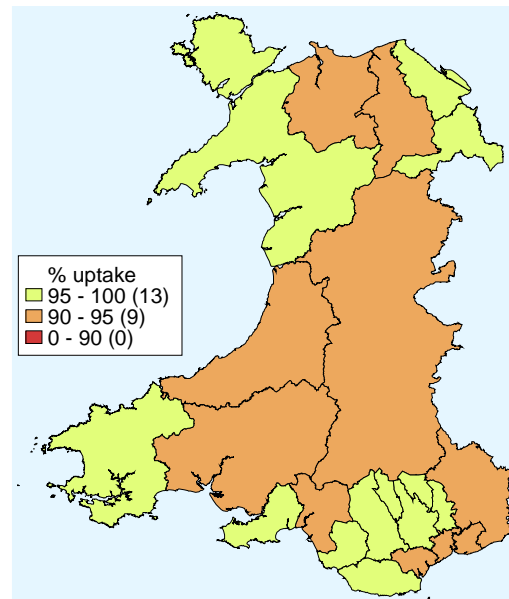


Figure 7. Uptake of two doses of MMR vaccine in Welsh Local Authority areas in children reaching their 5th birthday between 01/01/16 and 31/03/16.

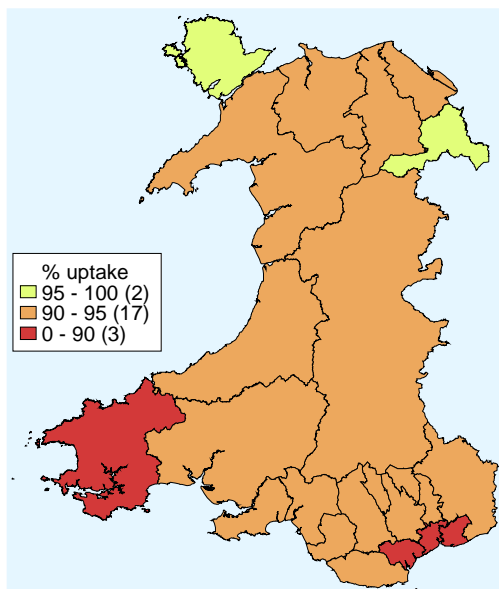


Figure 8. Uptake of “4 in 1” vaccine in Welsh Local Authority areas in children reaching their 5th birthday between 01/01/16 and 31/03/16.

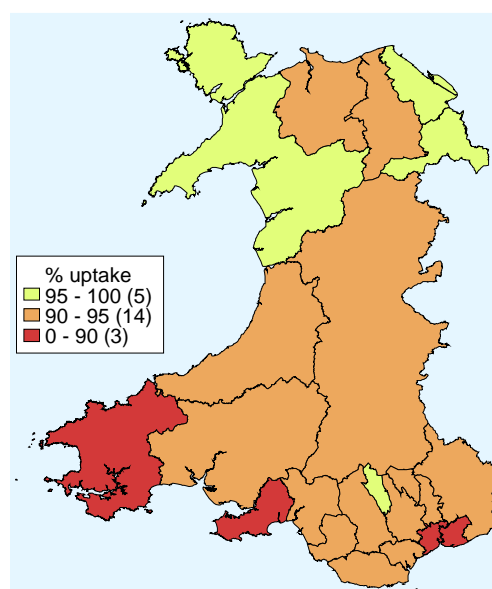


Table 3. Vaccine uptake in children reaching their 1st birthday between 01/01/16 and 31/03/16 and resident on 31/03/16.

Area	Resident children		D3		T3		P3		Po3		Hib3		MMR1		MenC ¹		Rotavirus		PCV2 ²		HibMenC	
	(n)	(n)	(%)	(n)	(%)	(n)	(%)	(n)	(%)	(n)	(%)	(n)	(%)	(n)	(%)	(n)	(%)	(n)	(%)	(n)	(%)	
<u>Abertawe Bro Morgannwg University HB</u>																						
Bridgend LA	349	338	96.8	338	96.8	338	96.8	338	96.8	338	96.8	1	0.3	342	98.0	337	96.6	338	96.8	0	0.0	
Neath Port Talbot LA	374	363	97.1	363	97.1	363	97.1	363	97.1	363	97.1	0	0.0	370	98.9	359	96.0	363	97.1	0	0.0	
Swansea LA	602	584	97.0	584	97.0	584	97.0	584	97.0	584	97.0	2	0.3	592	98.3	576	95.7	584	97.0	2	0.3	
Health Board Total	1325	1285	97.0	1285	97.0	1285	97.0	1285	97.0	1285	97.0	3	0.2	1304	98.4	1272	96.0	1285	97.0	2	0.2	
<u>Aneurin Bevan University HB</u>																						
Blaenau Gwent LA	199	196	98.5	196	98.5	196	98.5	196	98.5	196	98.5	0	0.0	198	99.5	182	91.5	198	99.5	0	0.0	
Caerphilly LA	469	454	96.8	454	96.8	454	96.8	454	96.8	454	96.8	2	0.4	459	97.9	442	94.2	454	96.8	3	0.6	
Monmouthshire LA	183	175	95.6	175	95.6	175	95.6	175	95.6	175	95.6	0	0.0	175	95.6	164	89.6	175	95.6	0	0.0	
Newport LA	484	450	93.0	450	93.0	450	93.0	450	93.0	450	93.0	1	0.2	466	96.3	440	90.9	451	93.2	1	0.2	
Torfaen LA	215	209	97.2	209	97.2	209	97.2	209	97.2	209	97.2	0	0.0	209	97.2	201	93.5	208	96.7	0	0.0	
Health Board Total	1550	1484	95.7	1484	95.7	1484	95.7	1484	95.7	1484	95.7	3	0.2	1507	97.2	1429	92.2	1486	95.9	4	0.3	
<u>Betsi Cadwaladr University HB</u>																						
Anglesey LA	171	168	98.2	168	98.2	168	98.2	168	98.2	168	98.2	1	0.6	167	97.7	159	93.0	168	98.2	1	0.6	
Conwy LA	255	244	95.7	244	95.7	244	95.7	244	95.7	244	95.7	2	0.8	253	99.2	240	94.1	245	96.1	2	0.8	
Denbighshire LA	239	227	95.0	227	95.0	227	95.0	227	95.0	227	95.0	3	1.3	233	97.5	222	92.9	229	95.8	1	0.4	
Flintshire LA	349	340	97.4	340	97.4	340	97.4	340	97.4	340	97.4	1	0.3	342	98.0	327	93.7	339	97.1	0	0.0	
Gwynedd LA	249	245	98.4	245	98.4	245	98.4	245	98.4	245	98.4	1	0.4	244	98.0	232	93.2	243	97.6	1	0.4	
Wrexham LA	352	344	97.7	344	97.7	344	97.7	344	97.7	344	97.7	1	0.3	345	98.0	332	94.3	343	97.4	1	0.3	
Health Board Total	1615	1568	97.1	1568	97.1	1568	97.1	1568	97.1	1568	97.1	9	0.6	1584	98.1	1512	93.6	1567	97.0	6	0.4	
<u>Cardiff and Vale University HB</u>																						
Cardiff LA	1102	1046	94.9	1046	94.9	1046	94.9	1046	94.9	1046	94.9	3	0.3	1060	96.2	1025	93.0	1041	94.5	3	0.3	
Vale of Glamorgan LA	332	316	95.2	316	95.2	316	95.2	316	95.2	315	94.9	3	0.9	325	97.9	313	94.3	315	94.9	2	0.6	
Health Board Total	1434	1362	95.0	1362	95.0	1362	95.0	1362	95.0	1361	94.9	6	0.4	1385	96.6	1338	93.3	1356	94.6	5	0.3	
<u>Cwm Taf University HB</u>																						
Merthyr Tydfil LA	180	176	97.8	176	97.8	176	97.8	176	97.8	176	97.8	1	0.6	178	98.9	178	98.9	176	97.8	1	0.6	
Rhondda Cynon Taf LA	628	612	97.5	612	97.5	612	97.5	612	97.5	612	97.5	1	0.2	618	98.4	603	96.0	614	97.8	1	0.2	
Health Board Total	808	788	97.5	788	97.5	788	97.5	788	97.5	788	97.5	2	0.2	796	98.5	781	96.7	790	97.8	2	0.2	
<u>Hywel Dda University HB</u>																						
Carmarthenshire LA	454	440	96.9	440	96.9	440	96.9	440	96.9	440	96.9	1	0.2	447	98.5	429	94.5	439	96.7	1	0.2	
Ceredigion LA	168	163	97.0	163	97.0	163	97.0	162	96.4	162	96.4	1	0.6	161	95.8	155	92.3	163	97.0	1	0.6	
Pembrokeshire LA	302	279	92.4	279	92.4	279	92.4	279	92.4	279	92.4	0	0.0	285	94.4	267	88.4	280	92.7	0	0.0	
Health Board Total	924	882	95.5	882	95.5	882	95.5	881	95.3	881	95.3	2	0.2	893	96.6	851	92.1	882	95.5	2	0.2	
<u>Powys Teaching HB</u>	256	251	98.0	251	98.0	251	98.0	251	98.0	251	98.0	1	0.4	251	98.0	242	94.5	252	98.4	0	0.0	
Unknown	8	8	100.0	8	100.0	8	100.0	8	100.0	8	100.0	0	0.0	8	100.0	8	100.0	8	100.0	0	0.0	
Wales Total	7920	7628	96.3	7628	96.3	7628	96.3	7627	96.3	7626	96.3	26	0.3	7728	97.6	7433	93.9	7626	96.3	21	0.3	

¹ Uptake of a completed one dose primary course of MenC vaccination.

² Full primary two dose course of pneumococcal conjugate vaccine.

Table 4. Vaccine uptake in children reaching their 2nd birthday between 01/01/16 and 31/03/16 and resident on 31/03/16.

Area	Resident children	D3	T3	P3	Po3	Hib3	MMR1	MenC ¹	PCV2 ²	PCVf ³	HibMenC
	(n)	(n) (%)	(n) (%)	(n) (%)	(n) (%)	(n) (%)	(n) (%)	(n) (%)	(n) (%)	(n) (%)	(n) (%)
Abertawe Bro Morgannwg University HB											
Bridgend LA	361	356 98.6	356 98.6	356 98.6	356 98.6	356 98.6	351 97.2	354 98.1	351 97.2	351 97.2	348 96.4
Neath Port Talbot LA	343	338 98.5	338 98.5	338 98.5	338 98.5	338 98.5	324 94.5	340 99.1	336 98.0	327 95.3	326 95.0
Swansea LA	614	604 98.4	604 98.4	604 98.4	602 98.0	603 98.2	591 96.3	595 96.9	594 96.7	593 96.6	583 95.0
Health Board Total	1318	1298 98.5	1298 98.5	1298 98.5	1296 98.3	1297 98.4	1266 96.1	1289 97.8	1281 97.2	1271 96.4	1257 95.4
Aneurin Bevan University HB											
Blaenau Gwent LA	217	215 99.1	215 99.1	215 99.1	215 99.1	215 99.1	210 96.8	213 98.2	214 98.6	213 98.2	213 98.2
Caerphilly LA	509	506 99.4	506 99.4	506 99.4	506 99.4	506 99.4	492 96.7	504 99.0	505 99.2	495 97.2	493 96.9
Monmouthshire LA	214	204 95.3	204 95.3	204 95.3	204 95.3	204 95.3	199 93.0	201 93.9	204 95.3	202 94.4	202 94.4
Newport LA	442	430 97.3	430 97.3	430 97.3	430 97.3	430 97.3	418 94.6	430 97.3	422 95.5	415 93.9	410 92.8
Torfaen LA	262	261 99.6	261 99.6	261 99.6	261 99.6	261 99.6	250 95.4	259 98.9	259 98.9	252 96.2	253 96.6
Health Board Total	1644	1616 98.3	1616 98.3	1616 98.3	1616 98.3	1616 98.3	1569 95.4	1607 97.7	1604 97.6	1577 95.9	1571 95.6
Betsi Cadwaladr University HB											
Anglesey LA	176	174 98.9	174 98.9	174 98.9	174 98.9	174 98.9	172 97.7	173 98.3	172 97.7	172 97.7	171 97.2
Conwy LA	264	255 96.6	255 96.6	255 96.6	255 96.6	255 96.6	248 93.9	257 97.3	250 94.7	246 93.2	244 92.4
Denbighshire LA	281	274 97.5	274 97.5	274 97.5	274 97.5	274 97.5	264 94.0	276 98.2	268 95.4	268 95.4	264 94.0
Flintshire LA	361	356 98.6	356 98.6	356 98.6	356 98.6	356 98.6	351 97.2	351 97.2	353 97.8	353 97.8	348 96.4
Gwynedd LA	282	268 95.0	268 95.0	268 95.0	268 95.0	269 95.4	268 95.0	266 94.3	266 94.3	267 94.7	268 95.0
Wrexham LA	392	387 98.7	387 98.7	387 98.7	385 98.2	386 98.5	380 96.9	384 98.0	383 97.7	384 98.0	378 96.4
Health Board Total	1756	1714 97.6	1714 97.6	1714 97.6	1713 97.6	1713 97.6	1683 95.8	1707 97.2	1692 96.4	1690 96.2	1673 95.3
Cardiff and Vale University HB											
Cardiff LA	1093	1058 96.8	1058 96.8	1058 96.8	1058 96.8	1058 96.8	1033 94.5	1039 95.1	1021 93.4	1032 94.4	1013 92.7
Vale of Glamorgan LA	310	299 96.5	299 96.5	299 96.5	298 96.1	298 96.1	297 95.8	301 97.1	296 95.5	297 95.8	295 95.2
Health Board Total	1403	1357 96.7	1357 96.7	1357 96.7	1356 96.7	1356 96.7	1330 94.8	1340 95.5	1317 93.9	1329 94.7	1308 93.2
Cwm Taf University HB											
Merthyr Tydfil LA	154	150 97.4	150 97.4	150 97.4	150 97.4	150 97.4	149 96.8	150 97.4	149 96.8	151 98.1	151 98.1
Rhondda Cynon Taf LA	670	662 98.8	662 98.8	662 98.8	662 98.8	661 98.7	654 97.6	658 98.2	656 97.9	658 98.2	652 97.3
Health Board Total	824	812 98.5	812 98.5	812 98.5	812 98.5	811 98.4	803 97.5	808 98.1	805 97.7	809 98.2	803 97.5
Hywel Dda University HB											
Carmarthenshire LA	482	464 96.3	464 96.3	464 96.3	463 96.1	463 96.1	449 93.2	462 95.9	458 95.0	453 94.0	450 93.4
Ceredigion LA	166	159 95.8	159 95.8	159 95.8	158 95.2	159 95.8	152 91.6	154 92.8	156 94.0	150 90.4	151 91.0
Pembrokeshire LA	304	298 98.0	298 98.0	298 98.0	298 98.0	298 98.0	289 95.1	298 98.0	294 96.7	292 96.1	290 95.4
Health Board Total	952	921 96.7	921 96.7	921 96.7	919 96.5	920 96.6	890 93.5	914 96.0	908 95.4	895 94.0	891 93.6
Powys Teaching HB											
Unknown	23	23 100.0	23 100.0	23 100.0	23 100.0	23 100.0	22 95.7	23 100.0	23 100.0	23 100.0	23 100.0
Wales Total	8222	8035 97.7	8035 97.7	8035 97.7	8029 97.7	8030 97.7	7848 95.5	7983 97.1	7924 96.4	7881 95.9	7813 95.0

¹ Uptake of a completed one dose primary course of MenC vaccination.

² Full primary two dose course of pneumococcal conjugate vaccine.

³ Final (booster) dose of pneumococcal conjugate vaccine.

Table 5. Vaccine uptake in children reaching their 4th birthday between 01/01/16 and 31/03/16 and resident on 31/03/16. The proportion of children who have received all of these vaccines by their 4th birthday is also presented.

Area	Resident children (n)	4 in 1 Preschool Booster ¹		HibMenC		MMR dose 2		Up to date in schedule ²	
		(n)	(%)	(n)	(%)	(n)	(%)	(n)	(%)
<u>Abertawe Bro Morgannwg University HB</u>									
Bridgend LA	387	360	93.0	365	94.3	352	91.0	347	89.7
Neath Port Talbot LA	393	352	89.6	371	94.4	351	89.3	338	86.0
Swansea LA	712	642	90.2	682	95.8	643	90.3	624	87.6
Health Board Total	1492	1354	90.8	1418	95.0	1346	90.2	1309	87.7
<u>Aneurin Bevan University HB</u>									
Blaenau Gwent LA	171	145	84.8	163	95.3	145	84.8	145	84.8
Caerphilly LA	497	441	88.7	482	97.0	439	88.3	432	86.9
Monmouthshire LA	244	215	88.1	226	92.6	207	84.8	207	84.8
Newport LA	471	377	80.0	433	91.9	371	78.8	353	74.9
Torfaen LA	283	233	82.3	273	96.5	232	82.0	227	80.2
Health Board Total	1666	1411	84.7	1577	94.7	1394	83.7	1364	81.9
<u>Betsi Cadwaladr University HB</u>									
Anglesey LA	205	195	95.1	197	96.1	190	92.7	190	92.7
Conwy LA	282	255	90.4	272	96.5	250	88.7	250	88.7
Denbighshire LA	243	214	88.1	232	95.5	212	87.2	209	86.0
Flintshire LA	423	401	94.8	400	94.6	388	91.7	384	90.8
Gwynedd LA	322	294	91.3	306	95.0	289	89.8	287	89.1
Wrexham LA	402	362	90.0	384	95.5	357	88.8	352	87.6
Health Board Total	1877	1721	91.7	1791	95.4	1686	89.8	1672	89.1
<u>Cardiff and Vale University HB</u>									
Cardiff LA	1143	1007	88.1	1047	91.6	984	86.1	953	83.4
Vale of Glamorgan LA	364	317	87.1	342	94.0	315	86.5	309	84.9
Health Board Total	1507	1324	87.9	1389	92.2	1299	86.2	1262	83.7
<u>Cwm Taf University HB</u>									
Merthyr Tydfil LA	176	163	92.6	169	96.0	161	91.5	158	89.8
Rhondda Cynon Taf LA	642	593	92.4	624	97.2	584	91.0	579	90.2
Health Board Total	818	756	92.4	793	96.9	745	91.1	737	90.1
<u>Hywel Dda University HB</u>									
Carmarthenshire LA	534	477	89.3	501	93.8	470	88.0	462	86.5
Ceredigion LA	163	152	93.3	150	92.0	150	92.0	149	91.4
Pembrokeshire LA	358	312	87.2	337	94.1	305	85.2	299	83.5
Health Board Total	1055	941	89.2	988	93.6	925	87.7	910	86.3
<u>Powys Teaching HB</u>	269	241	89.6	247	91.8	235	87.4	229	85.1
Unknown	14	14	100.0	14	100.0	14	100.0	14	100.0
Wales Total	8698	7762	89.2	8217	94.5	7644	87.9	7497	86.2

¹ Uptake of acellular pertussis used as proxy

² Completed "4 in 1" preschool booster, the Hib/ MenC booster and second MMR dose by four years of age.

Table 6. Vaccine uptake in children reaching their 5th birthday between 01/01/16 and 31/03/16 and resident on 31/03/16. The proportion of children who have received all of these vaccines by their 5th birthday is also presented.

Area	Resident children (n)	4 in 1 Preschool Booster ¹		HibMenCb		MMR dose 2		Up to date in schedule ²	
		(n)	(%)	(n)	(%)	(n)	(%)	(n)	(%)
Abertawe Bro Morgannwg University HB									
Bridgend LA	405	370	91.4	384	94.8	369	91.1	360	88.9
Neath Port Talbot LA	401	368	91.8	390	97.3	377	94.0	360	89.8
Swansea LA	642	575	89.6	594	92.5	581	90.5	555	86.4
Health Board Total	1448	1313	90.7	1368	94.5	1327	91.6	1275	88.1
Aneurin Bevan University HB									
Blaenau Gwent LA	174	158	90.8	166	95.4	160	92.0	156	89.7
Caerphilly LA	512	466	91.0	495	96.7	471	92.0	454	88.7
Monmouthshire LA	204	189	92.6	189	92.6	186	91.2	181	88.7
Newport LA	497	440	88.5	452	90.9	438	88.1	418	84.1
Torfaen LA	270	252	93.3	258	95.6	249	92.2	243	90.0
Health Board Total	1657	1505	90.8	1560	94.1	1504	90.8	1452	87.6
Betsi Cadwaladr University HB									
Anglesey LA	171	166	97.1	167	97.7	163	95.3	163	95.3
Conwy LA	298	281	94.3	281	94.3	275	92.3	270	90.6
Denbighshire LA	282	265	94.0	266	94.3	259	91.8	258	91.5
Flintshire LA	383	366	95.6	355	92.7	354	92.4	349	91.1
Gwynedd LA	287	273	95.1	268	93.4	264	92.0	262	91.3
Wrexham LA	406	396	97.5	392	96.6	388	95.6	385	94.8
Health Board Total	1827	1747	95.6	1729	94.6	1703	93.2	1687	92.3
Cardiff and Vale University HB									
Cardiff LA	1096	994	90.7	1001	91.3	974	88.9	937	85.5
Vale of Glamorgan LA	372	343	92.2	352	94.6	335	90.1	331	89.0
Health Board Total	1468	1337	91.1	1353	92.2	1309	89.2	1268	86.4
Cwm Taf University HB									
Merthyr Tydfil LA	178	170	95.5	167	93.8	167	93.8	162	91.0
Rhondda Cynon Taf LA	726	682	93.9	704	97.0	673	92.7	666	91.7
Health Board Total	904	852	94.2	871	96.3	840	92.9	828	91.6
Hywel Dda University HB									
Carmarthenshire LA	483	439	90.9	452	93.6	442	91.5	421	87.2
Ceredigion LA	156	148	94.9	144	92.3	141	90.4	139	89.1
Pembrokeshire LA	337	302	89.6	314	93.2	295	87.5	292	86.6
Health Board Total	976	889	91.1	910	93.2	878	90.0	852	87.3
Powys Teaching HB	287	271	94.4	270	94.1	265	92.3	259	90.2
Unknown	18	17	94.4	17	94.4	17	94.4	17	94.4
Wales Total	8585	7931	92.4	8078	94.1	7843	91.4	7638	89.0

¹ Uptake of acellular pertussis used as proxy

² Completed "4 in 1" preschool booster, the Hib/ MenC booster and second MMR dose by four years of age.

Table 7. Vaccine uptake in children reaching their 5th birthday between 01/01/16 and 31/03/16 and resident on 31/03/16.

Area	Resident children	D3	T3	P3	Po3	Hib3	MenC ¹	PCVf ²	HibMenC	MMR1	MMR2	D4	T4	aP	Po4
	(n)	(n) (%)	(n) (%)	(n) (%)	(n) (%)	(n) (%)	(n) (%)	(n) (%)	(n) (%)	(n) (%)	(n) (%)	(n) (%)	(n) (%)	(n) (%)	(n) (%)
Abertawe Bro Morgannwg University HE															
Bridgend LA	405	388 95.8	388 95.8	388 95.8	387 95.6	380 93.8	379 93.6	384 94.8	393 97.0	369 91.1	370 91.4	370 91.4	370 91.4	370 91.4	370 91.4
Neath Port Talbot LA	401	392 97.8	392 97.8	392 97.8	392 97.8	390 97.3	383 95.5	390 97.3	393 98.0	377 94.0	368 91.8	368 91.8	368 91.8	368 91.8	368 91.8
Swansea LA	642	611 95.2	611 95.2	611 95.2	611 95.2	590 91.9	587 91.4	594 92.5	615 95.8	581 90.5	575 89.6	575 89.6	575 89.6	575 89.6	575 89.6
Health Board Total	1448	1391 96.1	1391 96.1	1391 96.1	1390 96.0	1390 96.0	1349 93.2	1368 94.5	1401 96.8	1327 91.6	1313 90.7	1313 90.7	1313 90.7	1313 90.7	1313 90.7
Aneurin Bevan University HB															
Blaenau Gwent LA	174	169 97.1	169 97.1	169 97.1	169 97.1	168 96.6	166 95.4	166 95.4	172 98.9	160 92.0	158 90.8	158 90.8	158 90.8	158 90.8	158 90.8
Caerphilly LA	512	505 98.6	505 98.6	505 98.6	505 98.6	499 97.5	493 96.3	495 96.7	503 98.2	471 92.0	466 91.0	466 91.0	466 91.0	466 91.0	466 91.0
Monmouthshire LA	204	194 95.1	194 95.1	194 95.1	194 95.1	193 94.6	191 93.6	189 92.6	195 95.6	186 91.2	189 92.6	189 92.6	189 92.6	189 92.6	189 92.6
Newport LA	497	472 95.0	472 95.0	472 95.0	472 95.0	456 91.8	455 91.5	452 90.9	474 95.4	438 88.1	440 88.5	440 88.5	440 88.5	440 88.5	440 88.5
Torfaen LA	270	263 97.4	263 97.4	263 97.4	263 97.4	257 95.2	259 95.9	258 95.6	264 97.8	249 92.2	252 93.3	252 93.3	252 93.3	252 93.3	252 93.3
Health Board Total	1657	1603 96.7	1603 96.7	1603 96.7	1603 96.7	1602 96.7	1564 94.4	1560 94.1	1608 97.0	1504 90.8	1505 90.8	1505 90.8	1505 90.8	1505 90.8	1505 90.8
Betsi Cadwaladr University HB															
Anglesey LA	171	168 98.2	168 98.2	168 98.2	168 98.2	168 98.2	166 97.1	167 97.7	167 97.7	163 95.3	166 97.1	166 97.1	166 97.1	166 97.1	166 97.1
Conwy LA	298	288 96.6	288 96.6	288 96.6	288 96.6	280 94.0	277 93.0	281 94.3	293 98.3	275 92.3	281 94.3	281 94.3	281 94.3	281 94.3	281 94.3
Denbighshire LA	282	270 95.7	270 95.7	270 95.7	270 95.7	269 95.4	267 94.7	266 94.3	269 95.4	259 91.8	265 94.0	265 94.0	265 94.0	265 94.0	265 94.0
Flintshire LA	383	361 94.3	361 94.3	361 94.3	361 94.3	357 93.2	354 92.4	355 92.7	372 97.1	354 92.4	366 95.6	366 95.6	366 95.6	366 95.6	366 95.6
Gwynedd LA	287	273 95.1	273 95.1	273 95.1	273 95.1	272 94.8	264 92.0	268 93.4	277 96.5	264 92.0	273 95.1	273 95.1	273 95.1	273 95.1	273 95.1
Wrexham LA	406	396 97.5	396 97.5	396 97.5	395 97.3	396 97.5	391 96.3	391 96.3	392 96.6	401 98.8	388 95.6	396 97.5	396 97.5	396 97.5	396 97.5
Health Board Total	1827	1756 96.1	1756 96.1	1756 96.1	1755 96.1	1754 96.0	1719 94.1	1729 94.6	1779 97.4	1703 93.2	1747 95.6	1747 95.6	1747 95.6	1747 95.6	1746 95.6
Cardiff and Vale University HB															
Cardiff LA	1096	1040 94.9	1040 94.9	1039 94.8	1041 95.0	1036 94.5	1001 91.3	1000 91.2	1001 91.3	1053 96.1	994 90.7	994 90.7	994 90.7	994 90.7	994 90.7
Vale of Glamorgan LA	372	360 96.8	360 96.8	360 96.8	360 96.8	360 96.8	355 95.4	355 95.4	352 94.6	359 96.5	343 92.2	343 92.2	343 92.2	343 92.2	343 92.2
Health Board Total	1468	1400 95.4	1400 95.4	1399 95.3	1401 95.4	1396 95.1	1356 92.4	1355 92.3	1353 92.2	1412 96.2	1309 89.2	1337 91.1	1337 91.1	1337 91.1	1337 91.1
Cwm Taf University HB															
Merthyr Tydfil LA	178	173 97.2	173 97.2	173 97.2	173 97.2	172 96.6	165 92.7	167 93.8	174 97.8	167 93.8	170 95.5	170 95.5	170 95.5	170 95.5	170 95.5
Rhondda Cynon Taf LA	726	715 98.5	715 98.5	715 98.5	715 98.5	715 98.5	710 97.8	704 97.0	719 99.0	673 92.7	682 93.9	682 93.9	682 93.9	682 93.9	682 93.9
Health Board Total	904	888 98.2	888 98.2	888 98.2	888 98.2	888 98.2	882 97.6	869 96.1	871 96.3	893 98.8	840 92.9	852 94.2	852 94.2	852 94.2	852 94.2
Hywel Dda University HB															
Carmarthenshire LA	483	465 96.3	465 96.3	465 96.3	464 96.1	465 96.3	456 94.4	452 93.6	452 93.6	469 97.1	442 91.5	439 90.9	439 90.9	439 90.9	439 90.9
Ceredigion LA	156	148 94.9	148 94.9	148 94.9	148 94.9	148 94.9	142 91.0	142 91.0	144 92.3	147 94.2	141 90.4	148 94.9	148 94.9	148 94.9	148 94.9
Pembrokeshire LA	337	321 95.3	321 95.3	321 95.3	321 95.3	321 95.3	315 93.5	312 92.6	314 93.2	323 95.8	295 87.5	302 89.6	302 89.6	302 89.6	302 89.6
Health Board Total	976	934 95.7	934 95.7	934 95.7	933 95.6	934 95.7	913 93.5	906 92.8	910 93.2	939 96.2	878 90.0	889 91.1	889 91.1	889 91.1	889 91.1
Powys Teaching HB	287	274 95.5	274 95.5	274 95.5	273 95.1	274 95.5	264 92.0	268 93.4	270 94.1	280 97.6	265 92.3	271 94.4	271 94.4	271 94.4	271 94.4
Unknown	18	17 94.4	17 94.4	17 94.4	17 94.4	17 94.4	17 94.4	17 94.4	17 94.4	17 94.4	17 94.4	17 94.4	17 94.4	17 94.4	17 94.4
Wales Total	8585	8263 96.2	8263 96.2	8262 96.2	8260 96.2	8255 96.2	8092 94.3	8047 93.7	8078 94.1	8329 97.0	7843 91.4	7931 92.4	7931 92.4	7931 92.4	7930 92.4

¹ Completed three dose course, or two doses with the second delivered after 115 days of age

² Final (booster) dose of pneumococcal conjugate vaccine

Table 8. Uptake of HPV vaccine in girls reaching 13 and 14 years of age between 01/09/15 and 31/08/16 and resident on 31/03/16.

Area	13 years (2015-16 School Year 8) ¹			14 years (2015-16 School Year 9) ²				
	Resident girls (n)	HPV 1 dose (n)	(%)	Resident girls (n)	HPV 1 dose (n)	(%)	HPV 2 dose (n)	(%)
<u>Abertawe Bro Morgannwg University HB</u>								
Bridgend LA	717	652	90.93	717	665	92.7	591	82.4
Neath Port Talbot LA	653	432	66.16	670	618	92.2	378	56.4
Swansea LA	1205	525	43.57	1191	1099	92.3	475	39.9
Health Board Total	2575	1609	62.49	2578	2382	92.4	1444	56.0
<u>Aneurin Bevan University HB</u>								
Blaenau Gwent LA	304	263	86.5	340	322	94.7	279	82.1
Caerphilly LA	872	683	78.3	878	823	93.7	712	81.1
Monmouthshire LA	498	376	75.5	469	383	81.7	344	73.3
Newport LA	881	686	77.9	898	769	85.6	683	76.1
Torfaen LA	463	375	81.0	488	446	91.4	381	78.1
Health Board Total	3018	2383	79.0	3073	2743	89.3	2399	78.1
<u>Betsi Cadwaladr University HB</u>								
Anglesey LA	339	32	9.4	353	312	88.4	26	7.4
Conwy LA	529	292	55.2	529	471	89.0	352	66.5
Denbighshire LA	445	203	45.6	460	401	87.2	254	55.2
Flintshire LA	722	299	41.4	781	707	90.5	349	44.7
Gwynedd LA	557	288	51.7	547	486	88.8	319	58.3
Wrexham LA	625	133	21.3	604	512	84.8	247	40.9
Health Board Total	3217	1247	38.8	3274	2889	88.2	1547	47.3
<u>Cardiff and Vale University HB</u>								
Cardiff LA	1865	1174	62.9	1660	1409	84.9	906	54.6
Vale of Glamorgan LA	677	499	73.7	627	574	91.5	453	72.2
Health Board Total	2542	1673	65.8	2287	1983	86.7	1359	59.4
<u>Cwm Taf University HB</u>								
Merthyr Tydfil LA	312	5	1.6	277	257	92.8	252	91.0
Rhondda Cynon Taf LA	1270	15	1.2	1125	1075	95.6	1004	89.2
Health Board Total	1582	20	1.3	1402	1332	95.0	1256	89.6
<u>Hywel Dda University HB</u>								
Carmarthenshire LA	926	807	87.1	858	794	92.5	761	88.7
Ceredigion LA	295	244	82.7	295	258	87.5	253	85.8
Pembrokeshire LA	598	496	82.9	518	448	86.5	430	83.0
Health Board Total	1819	1547	85.0	1671	1500	89.8	1444	86.4
<u>Powys Teaching HB</u>	597	0	0.0	596	499	83.7	461	77.3
Unknown	49	26	53.1	53	47	88.7	32	60.4
Wales Total	15446	8513	55.1	14934	13375	89.6	9942	66.6

¹ Dose 1 immunisation sessions vary between health boards and may not be undertaken until later on in the school year in some areas.

² Represents the first School Year 8 group (2014-15) to receive the two dose HPV schedule. Dose 2 immunisation sessions may not be undertaken until later on in the school year.

Table 9. MMR and Td/IPV vaccine uptake in children reaching their 15th birthday between 01/01/16 and 31/03/16 and resident on 31/03/16 (with breakdown of MMR1 and MMR2 coverage by sex).

Area	Resident children		Teenage 3 in 1 booster ¹						MenC ²	Resident girls		MMR1 (girls)		MMR2 (girls)		Resident boys		MMR1 (boys)		MMR2 (boys)		
	(n)	(n) (%)	(n)	(%)	(n)	(%)	(n)	(%)		(n)	(n) (%)	(n) (%)	(n) (%)	(n)	(n) (%)	(n) (%)	(n)	(n) (%)	(n) (%)			
Abertawe Bro Morgannwg University HB																						
Bridgend LA	385	363 94.3	337	87.5	346	89.9	348	90.4		203	193 95.1	177	87.2	182	170 93.4	160	87.9					
Neath Port Talbot LA	346	326 94.2	298	86.1	303	87.6	302	87.3		158	151 95.6	142	89.9	188	175 93.1	156	83.0					
Swansea LA	619	571 92.2	521	84.2	533	86.1	523	84.5		320	302 94.4	281	87.8	299	269 90.0	240	80.3					
Health Board Total	1350	1260 93.3	1156 85.6	1182 87.6	1173 86.9					681	646 94.9	600 88.1		669	614 91.8	556 83.1						
Aneurin Bevan University HB																						
Blaenau Gwent LA	175	163 93.1	157	89.7	148	84.6	148	84.6		93	84 90.3	82	88.2	82	79 96.3	75	91.5					
Caerphilly LA	483	473 97.9	459	95.0	394	81.6	392	81.2		219	213 97.3	204	93.2	264	260 98.5	255	96.6					
Monmouthshire LA	261	234 89.7	217	83.1	198	75.9	198	75.9		116	106 91.4	103	88.8	145	128 88.3	114	78.6					
Newport LA	445	404 90.8	379	85.2	373	83.8	367	82.5		223	199 89.2	183	82.1	222	205 92.3	196	88.3					
Torfaen LA	239	229 95.8	221	92.5	215	90.0	211	88.3		117	112 95.7	107	91.5	122	117 95.9	114	93.4					
Health Board Total	1603	1503 93.8	1433 89.4	1328 82.8	1316 82.1					768	714 93.0	679 88.4		835	789 94.5	754 90.3						
Betsi Cadwaladr University HB																						
Anglesey LA	183	172 94.0	170	92.9	151	82.5	149	81.4		80	77 96.3	75	93.8	103	95 92.2	95	92.2					
Conwy LA	309	286 92.6	265	85.8	241	78.0	239	77.3		179	165 92.2	152	84.9	130	121 93.1	113	86.9					
Denbighshire LA	258	243 94.2	217	84.1	210	81.4	208	80.6		109	100 91.7	91	83.5	149	143 96.0	126	84.6					
Flintshire LA	433	403 93.1	378	87.3	358	82.7	355	82.0		218	207 95.0	193	88.5	215	196 91.2	185	86.0					
Gwynedd LA	281	267 95.0	260	92.5	226	80.4	222	79.0		150	143 95.3	138	92.0	131	124 94.7	122	93.1					
Wrexham LA	352	338 96.0	325	92.3	287	81.5	283	80.4		173	167 96.5	158	91.3	179	171 95.5	167	93.3					
Health Board Total	1816	1709 94.1	1615 88.9	1473 81.1	1456 80.2					909	859 94.5	807 88.8		907	850 93.7	808 89.1						
Cardiff and Vale University HB																						
Cardiff LA	898	818 91.1	756	84.2	663	73.8	659	73.4		408	371 90.9	342	83.8	490	447 91.2	414	84.5					
Vale of Glamorgan LA	331	314 94.9	298	90.0	274	82.8	274	82.8		169	159 94.1	151	89.3	162	155 95.7	147	90.7					
Health Board Total	1229	1132 92.1	1054 85.8	937 76.2	933 75.9					577	530 91.9	493 85.4		652	602 92.3	561 86.0						
Cwm Taf University HB																						
Merthyr Tydfil LA	159	153 96.2	141	88.7	146	91.8	147	92.5		79	76 96.2	71	89.9	80	77 96.3	70	87.5					
Rhondda Cynon Taf LA	608	584 96.1	545	89.6	560	92.1	566	93.1		295	284 96.3	264	89.5	313	300 95.8	281	89.8					
Health Board Total	767	737 96.1	686 89.4	706 92.0	713 93.0					374	360 96.3	335 89.6		393	377 95.9	351 89.3						
Hywel Dda University HB																						
Carmarthenshire LA	410	378 92.2	361	88.0	362	88.3	358	87.3		191	180 94.2	174	91.1	219	198 90.4	187	85.4					
Ceredigion LA	168	156 92.9	150	89.3	153	91.1	156	92.9		81	74 91.4	74	91.4	87	82 94.3	76	87.4					
Pembrokeshire LA	308	285 92.5	269	87.3	224	72.7	217	70.5		133	122 91.7	115	86.5	175	163 93.1	154	88.0					
Health Board Total	886	819 92.4	780 88.0	739 83.4	731 82.5					405	376 92.8	363 89.6		481	443 92.1	417 86.7						
Powys Teaching HB	333	293 88.0	275 82.6	277 83.2	277 83.2					161	139 86.3	129 80.1		172	154 89.5	146 84.9						
Unknown	39	37 94.9	33	84.6	30	76.9	31	79.5		20	18 90.0	18	90.0	19	19 100.0	15	78.9					
Wales Total	8023	7490 93.4	7032 87.6	6672 83.2	6630 82.6					3895	3642 93.5	3424 87.9		4128	3848 93.2	3608 87.4						

¹ Teenage booster dose of diphtheria, tetanus and polio (diphtheria used as proxy)

² Dose of Men C containing vaccine, the majority of which will be MenC vaccine, a small number of teenagers are recorded as having received MenACWY vaccine.

Table 10. MMR and Td/IPV vaccine uptake in children reaching their 16th birthday between 01/01/16 and 31/03/16 and resident on 31/03/16 (with breakdown of MMR1 and MMR2 coverage by sex).

Area	Resident children		MMR1		MMR2		Teenage 3 in 1 booster ¹		Resident girls		MMR1 (girls)		MMR2 (girls)		Resident boys		MMR1 (boys)		MMR2 (boys)	
	(n)	(n)	(%)	(n)	(%)	(n)	(%)	(n)	(n)	(n)	(%)	(n)	(%)	(n)	(n)	(n)	(%)	(n)	(%)	
Abertawe Bro Morgannwg University HB	(n)	(n)	(%)	(n)	(%)	(n)	(%)	(n)	(n)	(n)	(%)	(n)	(%)	(n)	(n)	(n)	(%)	(n)	(%)	
Bridgend LA	365	349	95.6	330	90.4	316	86.6	188	178	94.7	168	89.4	177	171	96.6	162	91.5			
Neath Port Talbot LA	361	341	94.5	321	88.9	312	86.4	172	165	95.9	158	91.9	189	176	93.1	163	86.2			
Swansea LA	608	568	93.4	542	89.1	532	87.5	278	261	93.9	253	91.0	330	307	93.0	289	87.6			
Health Board Total	1334	1258	94.3	1193	89.4	1160	87.0	638	604	94.7	579	90.8	696	654	94.0	614	88.2			
Aneurin Bevan University HB																				
Blaenau Gwent LA	194	185	95.4	170	87.6	169	87.1	97	92	94.8	84	86.6	97	93	95.9	86	88.7			
Caerphilly LA	475	461	97.1	439	92.4	398	83.8	224	217	96.9	210	93.8	251	244	97.2	229	91.2			
Monmouthshire LA	266	241	90.6	222	83.5	209	78.6	129	119	92.2	112	86.8	137	122	89.1	110	80.3			
Newport LA	458	435	95.0	401	87.6	381	83.2	207	198	95.7	181	87.4	251	237	94.4	220	87.6			
Torfaen LA	247	239	96.8	229	92.7	215	87.0	117	115	98.3	110	94.0	130	124	95.4	119	91.5			
Health Board Total	1640	1561	95.2	1461	89.1	1372	83.7	774	741	95.7	697	90.1	866	820	94.7	764	88.2			
Betsi Cadwaladr University HB																				
Anglesey LA	148	139	93.9	135	91.2	117	79.1	76	71	93.4	68	89.5	72	68	94.4	67	93.1			
Conwy LA	315	284	90.2	266	84.4	267	84.8	153	142	92.8	133	86.9	162	142	87.7	133	82.1			
Denbighshire LA	271	244	90.0	224	82.7	233	86.0	141	131	92.9	123	87.2	130	113	86.9	101	77.7			
Flintshire LA	380	367	96.6	354	93.2	339	89.2	173	167	96.5	162	93.6	207	200	96.6	192	92.8			
Gwynedd LA	296	279	94.3	273	92.2	259	87.5	143	136	95.1	131	91.6	153	143	93.5	142	92.8			
Wrexham LA	352	338	96.0	329	93.5	293	83.2	177	168	94.9	164	92.7	175	170	97.1	165	94.3			
Health Board Total	1762	1651	93.7	1581	89.7	1508	85.6	863	815	94.4	781	90.5	899	836	93.0	800	89.0			
Cardiff and Vale University HB																				
Cardiff LA	884	817	92.4	768	86.9	684	77.4	443	411	92.8	390	88.0	441	406	92.1	378	85.7			
Vale of Glamorgan LA	364	348	95.6	328	90.1	309	84.9	190	184	96.8	174	91.6	174	164	94.3	154	88.5			
Health Board Total	1248	1165	93.3	1096	87.8	993	79.6	633	595	94.0	564	89.1	615	570	92.7	532	86.5			
Cwm Taf University HB																				
Merthyr Tydfil LA	172	166	96.5	153	89.0	155	90.1	87	84	96.6	79	90.8	85	82	96.5	74	87.1			
Rhondda Cynon Taf LA	618	595	96.3	564	91.3	569	92.1	291	281	96.6	269	92.4	327	314	96.0	295	90.2			
Health Board Total	790	761	96.3	717	90.8	724	91.6	378	365	96.6	348	92.1	412	396	96.1	369	89.6			
Hywel Dda University HB																				
Carmarthenshire LA	377	354	93.9	335	88.9	311	82.5	187	178	95.2	169	90.4	190	176	92.6	166	87.4			
Ceredigion LA	153	150	98.0	141	92.2	137	89.5	72	72	100.0	68	94.4	81	78	96.3	73	90.1			
Pembrokeshire LA	316	298	94.3	281	88.9	257	81.3	159	151	95.0	146	91.8	157	147	93.6	135	86.0			
Health Board Total	846	802	94.8	757	89.5	705	83.3	418	401	95.9	383	91.6	428	401	93.7	374	87.4			
Powys Teaching HB																				
Unknown	36	32	88.9	32	88.9	28	77.8	12	11	91.7	11	91.7	24	21	87.5	21	87.5			
Wales Total	7968	7515	94.3	7098	89.1	6736	84.5	3866	3665	94.8	3486	90.2	4102	3850	93.9	3612	88.1			

¹ Teenage booster dose of diphtheria, tetanus and polio (diphtheria used as proxy).

Table 11. Uptake of HPV vaccine in girls reaching appropriate birthdays between 01/09/15 and 31/08/16 and resident on 31/03/16.

Area	15 years							16 years							17 years								
	Resident girls	1 dose		2 doses		3 doses ¹		Resident girls	1 dose		2 doses		3 doses ¹		Resident girls	1 dose		2 doses		3 doses ¹			
	(n)	(n)	(%)	(n)	(%)	(n)	(%)	(n)	(n)	(%)	(n)	(%)	(n)	(%)	(n)	(n)	(%)	(n)	(%)	(n)	(%)		
ABM UHB																							
Bridgend LA	801	741	92.5	733	91.5	677	84.5	724	679	93.8	675	93.2	664	91.7	766	701	91.5	696	90.9	691	90.2		
Neath Port Talbot LA	660	621	94.1	613	92.9	588	89.1	656	620	94.5	613	93.4	604	92.1	726	667	91.9	660	90.9	656	90.4		
Swansea LA	1232	1144	92.9	1128	91.6	1065	86.4	1211	1107	91.4	1098	90.7	1075	88.8	1165	1050	90.1	1044	89.6	1033	88.7		
Health Board Total	2693	2506	93.1	2474	91.9	2330	86.5	2591	2406	92.9	2386	92.1	2343	90.4	2657	2418	91.0	2400	90.3	2380	89.6		
Aneurin Bevan UHB																							
Blaenau Gwent LA	343	332	96.8	328	95.6	305	88.9	364	341	93.7	335	92.0	326	89.6	380	364	95.8	363	95.5	356	93.7		
Caerphilly LA	907	850	93.7	847	93.4	810	89.3	928	842	90.7	837	90.2	826	89.0	999	931	93.2	926	92.7	918	91.9		
Monmouthshire LA	477	370	77.6	361	75.7	343	71.9	544	438	80.5	432	79.4	426	78.3	527	414	78.6	411	78.0	405	76.9		
Newport LA	840	718	85.5	713	84.9	667	79.4	872	773	88.6	760	87.2	738	84.6	939	812	86.5	802	85.4	786	83.7		
Torfaen LA	511	476	93.2	470	92.0	449	87.9	472	425	90.0	422	89.4	404	85.6	538	494	91.8	492	91.4	479	89.0		
Health Board Total	3078	2746	89.2	2719	88.3	2574	83.6	3180	2819	88.6	2786	87.6	2720	85.5	3383	3015	89.1	2994	88.5	2944	87.0		
Betsi Cadwaladr UHB																							
Anglesey LA	354	319	90.1	313	88.4	301	85.0	344	308	89.5	307	89.2	302	87.8	356	318	89.3	315	88.5	305	85.7		
Conwy LA	607	551	90.8	547	90.1	528	87.0	594	533	89.7	532	89.6	524	88.2	576	527	91.5	522	90.6	518	89.9		
Denbighshire LA	528	473	89.6	471	89.2	461	87.3	511	448	87.7	442	86.5	433	84.7	551	493	89.5	492	89.3	488	88.6		
Flintshire LA	783	715	91.3	711	90.8	689	88.0	783	715	91.3	707	90.3	687	87.7	791	722	91.3	717	90.6	706	89.3		
Gwynedd LA	585	532	90.9	530	90.6	515	88.0	597	542	90.8	537	89.9	533	89.3	639	575	90.0	569	89.0	559	87.5		
Wrexham LA	666	613	92.0	602	90.4	589	88.4	711	625	87.9	618	86.9	607	85.4	677	608	89.8	608	89.8	606	89.5		
Health Board Total	3523	3203	90.9	3174	90.1	3083	87.5	3540	3171	89.6	3143	88.8	3086	87.2	3590	3243	90.3	3223	89.8	3182	88.6		
Cardiff & Vale UHB																							
Cardiff LA	1713	1482	86.5	1455	84.9	1287	75.1	1750	1535	87.7	1516	86.6	1429	81.7	1830	1575	86.1	1549	84.6	1459	79.7		
Vale of Glamorgan LA	639	579	90.6	574	89.8	501	78.4	707	648	91.7	646	91.4	606	85.7	767	658	85.8	653	85.1	630	82.1		
Health Board Total	2352	2061	87.6	2029	86.3	1788	76.0	2457	2183	88.8	2162	88.0	2035	82.8	2597	2233	86.0	2202	84.8	2089	80.4		
Cwm Taf UHB																							
Merthyr Tydfil LA	280	262	93.6	261	93.2	258	92.1	308	286	92.9	284	92.2	280	90.9	306	283	92.5	280	91.5	279	91.2		
Rhondda Cynon Taf LA	1148	1101	95.9	1092	95.1	1062	92.5	1181	1123	95.1	1118	94.7	1105	93.6	1235	1175	95.1	1168	94.6	1158	93.8		
Health Board Total	1428	1363	95.4	1353	94.7	1320	92.4	1489	1409	94.6	1402	94.2	1385	93.0	1541	1458	94.6	1448	94.0	1437	93.3		
Hywel Dda UHB																							
Cardemare LA	834	777	93.2	767	92.0	753	90.3	752	662	88.0	658	87.5	652	86.7	807	734	91.0	731	90.6	728	90.2		
Ceredigion LA	286	259	90.6	258	90.2	253	88.5	301	270	89.7	267	88.7	263	87.4	311	266	85.5	263	84.6	262	84.2		
Pembrokeshire LA	541	470	86.9	463	85.6	442	81.7	602	534	88.7	528	87.7	514	85.4	638	561	87.9	550	86.2	527	82.6		
Health Board Total	1661	1506	90.7	1488	89.6	1448	87.2	1655	1466	88.6	1453	87.8	1429	86.3	1756	1561	88.9	1544	87.9	1517	86.4		
Powys Teaching LHB	602	498	82.7	491	81.6	468	77.7	647	533	82.4	519	80.2	504	77.9	725	609	84.0	603	83.2	592	81.7		
Unknown	76	59	77.6	59	77.6	57	75.0	70	58	82.9	57	81.4	57	81.4	75	59	78.7	58	77.3	58	77.3		
Wales Total	15413	13942	90.5	13787	89.5	13068	84.8	15629	14045	89.9	13908	89.0	13559	86.8	16324	14596	89.4	14472	88.7	14199	87.0		

¹A small number of these girls were on the two dose schedule, due to starting their HPV courses late. These girls will not be expected to have a third dose, therefore third dose coverage is not a reflection of those who have completed a course in this small number of cases.

Table 12. Uptake of BCG immunisation in children reaching their 1st, 2nd, 5th and 16th birthdays between 01/01/16 and 31/03/16 and resident on 31/03/16.

Area	1 yr			2 yrs			5 yrs			16 yrs		
	Resident children	BCG Immunised	(%)	Resident children	BCG Immunised	(%)	Resident children	BCG Immunised	(%)	Resident children	BCG Immunised	(%)
<u>Abertawe Bro Morgannwg University HB</u>	(n)	(n)	(%)	(n)	(n)	(%)	(n)	(n)	(%)	(n)	(n)	(%)
Bridgend LA	349	22	6.3	361	20	5.5	405	12	3.0	365	6	1.6
Neath Port Talbot LA	374	28	7.5	343	11	3.2	401	14	3.5	361	4	1.1
Swansea LA	602	93	15.4	614	64	10.4	642	67	10.4	608	27	4.4
Health Board Total	1325	143	10.8	1318	95	7.2	1448	93	6.4	1334	37	2.8
<u>Aneurin Bevan University HB</u>												
Blaenau Gwent LA	199	6	3.0	217	4	1.8	174	5	2.9	194	4	2.1
Caerphilly LA	469	15	3.2	509	13	2.6	512	8	1.6	475	8	1.7
Monmouthshire LA	183	5	2.7	214	8	3.7	204	5	2.5	266	4	1.5
Newport LA	484	70	14.5	442	58	13.1	497	77	15.5	458	26	5.7
Torfaen LA	215	4	1.9	262	6	2.3	270	9	3.3	247	1	0.4
Health Board Total	1550	100	6.5	1644	89	5.4	1657	104	6.3	1640	43	2.6
<u>Betsi Cadwaladr University HB</u>												
Anglesey LA	171	2	1.2	176	6	3.4	171	5	2.9	148	1	0.7
Conwy LA	255	14	5.5	264	14	5.3	298	13	4.4	315	9	2.9
Denbighshire LA	239	5	2.1	281	16	5.7	282	9	3.2	271	4	1.5
Flintshire LA	349	6	1.7	361	13	3.6	383	21	5.5	380	7	1.8
Gwynedd LA	249	15	6.0	282	18	6.4	287	16	5.6	296	7	2.4
Wrexham LA	352	25	7.1	392	28	7.1	406	22	5.4	352	21	6.0
Health Board Total	1615	67	4.1	1756	95	5.4	1827	86	4.7	1762	49	2.8
<u>Cardiff and Vale University HB</u>												
Cardiff LA	1102	32	2.9	1093	198	18.1	1096	228	20.8	884	133	15.0
Vale of Glamorgan LA	332	1	0.3	310	20	6.5	372	10	2.7	364	6	1.6
Health Board Total	1434	33	2.3	1403	218	15.5	1468	238	16.2	1248	139	11.1
<u>Cwm Taf Univeristy HB</u>												
Merthyr Tydfil LA	180	10	5.6	154	9	5.8	178	11	6.2	172	6	3.5
Rhondda Cynon Taf LA	628	30	4.8	670	33	4.9	726	20	2.8	618	9	1.5
Health Board Total	808	40	5.0	824	42	5.1	904	31	3.4	790	15	1.9
<u>Hywel Dda University HB</u>												
Carmarthenshire LA	454	17	3.7	482	24	5.0	483	20	4.1	377	25	6.6
Ceredigion LA	168	11	6.5	166	3	1.8	156	8	5.1	153	0	0.0
Pembrokeshire LA	302	3	1.0	304	5	1.6	337	8	2.4	316	4	1.3
Health Board Total	924	31	3.4	952	32	3.4	976	36	3.7	846	29	3.4
<u>Powys Teaching Health Board</u>												
Unknown	8	0	0.0	23	1	4.3	18	0	0.0	36	0	0.0
Wales Total	7920	422	5.3	8222	581	7.1	8585	594	6.9	7968	315	4.0

Data reflects immunisations given and recorded on the NCCHD (following notifications to local Child Health Administration Offices), may be subject to under-reporting. BCG is not a routinely scheduled immunisation.

Table 13. Uptake of hepatitis B immunisation in children receiving their first dose within seven days of birth, reaching their 1st, 2nd, 5th and 16th birthdays during 01/01/16 and 31/03/16 and resident on 31/03/16, and percentage who are recorded as completing doses 1 to 3.

Area	1yr					2yrs						5yrs					
	Resident children	Babies at risk of perinatal infection	1 dose (%)	2 doses (%)	3 doses (%)	Resident children	Babies at risk of perinatal infection	1 dose (%)	2 doses (%)	3 doses (%)	4 doses (%)	Resident children	Babies at risk of perinatal infection	1 dose (%)	2 dose (%)	3 doses (%)	4 doses (%)
Abertawe Bro Morgannwg UHB	1325	2	100.0	100.0	100.0	1318	3	100.0	100.0	100.0	66.7	1448	3	100.0	100.0	100.0	100.0
Aneurin Bevan UHB	1550	2	100.0	100.0	100.0	1644	2	100.0	100.0	100.0	-	1657	2	100.0	100.0	100.0	100.0
Betsi Cadwaladr UHB	1615	7	100.0	100.0	100.0	1756	2	100.0	100.0	100.0	100.0	1827	3	100.0	100.0	100.0	100.0
Cardiff and Vale UHB	1434	11	100.0	100.0	90.9	1403	3	100.0	100.0	100.0	66.7	1468	1	100.0	100.0	100.0	100.0
Cwm Taf UHB	808	0	-	-	-	824	0	-	-	-	-	904	0	-	-	-	-
Hywel Dda UHB	924	0	-	-	-	952	0	-	-	-	-	976	1	100.0	100.0	100.0	100.0
Powys Teaching HB	256	0	-	-	-	302	0	-	-	-	-	287	0	-	-	-	-
Unknown	8	0	-	-	-	23	0	-	-	-	-	18	0	-	-	-	-
Wales Total	7920	22	100.0	100.0	95.5	8222	10	100.0	100.0	100.0	60.0	8585	10	100.0	100.0	100.0	100.0

Data reflects immunisations given and recorded on the Public Health Wales All Wales Neonatal Hepatitis B database of babies born to hepatitis B positive mothers.