

# Vaccine Uptake in Children in Wales October to December 2012

COVER 105: Wales February 2013



## Key points

- Uptake of all scheduled immunisations in children less than one year of age exceeded the 95% uptake target this quarter. Twenty Local Authority (LA) areas exceeded the 95% uptake target for all routine immunisations in one year olds.
- Uptake of the first dose of MMR vaccine in two year old children was 94% and ranged by LA from 87% to 97%. Nine LA areas and one Health Board achieved the target of 95% uptake.
- Uptake of the second MMR dose by five years of age increased to 90% this quarter (from 89% last quarter).
- Uptake of 4 in 1 pre-school booster in five year old children increased to 92% from 91% last quarter.
- Uptake of first dose of Human Papillomavirus (HPV) vaccine in girls in the 2012-13 School Year 8 was 86%.
- Coverage of one dose of MMR vaccine in 16 year olds this quarter was 91% and coverage of a completed two dose course was 82%.

These results are for children living in Wales in December 2012 and reaching their first, second, fifth, 15<sup>th</sup> and 16<sup>th</sup> birthdays during the quarter 01/10/2012 to 31/12/2012. Uptake of HPV vaccination in girls in the 2012-13 School Year 8 (reaching their 13<sup>th</sup> birthday between 01/09/2012 and 31/08/2013) is presented, along with coverage in the previous year's School Year 8 group. HPV vaccination protects girls against cervical cancer associated with HPV types 16 and 18. BCG and hepatitis B immunisation uptake data are also presented here. BCG and hepatitis B immunisations are not part of the routine childhood schedule and are given selectively following risk assessment; further information on circumstances in which these immunisations should be given can be found in: Immunisations Against Infectious Disease (The Green Book, available from <http://immunisation.dh.gov.uk/category/the-green-book/>).

## Findings

1. Uptake of all three doses of the combined "5 in 1" DTaP/IPV/Hib<sup>1</sup> vaccine, scheduled at 2, 3 and 4 months of age, in children reaching their first birthday this quarter was 96.5% (compared to 96.4% last quarter). Uptake ranged by Health Board from 94.9% to 97.2% and by Local Authority (LA) from 94.2% (Monmouthshire) to 98.9% (Torfaen). Twenty of the 22 LA areas achieved the target 95% uptake (Figure 3 and Tables 1, 2).
2. National uptake of a completed two dose course of MenC<sup>2</sup> vaccine in children reaching their first birthday this quarter was stable at 96.2%. Uptake in Health Boards ranged from 94.2% to 97.0% and ranged by LA from 93.8% (Cardiff) to 98.9% (Torfaen). Twenty LA areas achieved an uptake in excess of the 95% target (Tables 1, 2).

<sup>1</sup> DTaP/IPV/Hib vaccine protects against Diphtheria, Tetanus, Pertussis (Whooping Cough), Polio and Hib infection.

<sup>2</sup> Men C vaccine protects against meningitis caused by meningococcus group C infection. PCV protects against pneumococcal meningitis, bacteraemia, pneumonia and otitis media. Children reaching one year of age this quarter have been scheduled for the two dose course of pneumococcal conjugate vaccination (PCV) at two and four months of age and the two dose MenC primary course scheduled at three and four months of age. Children reaching 2 years of age this quarter should have been offered a routine dose of the Hib/ MenC and PCV at 12 to 13 months of age.

3. Uptake of a complete two dose primary course of pneumococcal conjugate vaccination (PCV2<sup>2</sup>) in children reaching their first birthday this quarter was 96.1%, an increase of 1% from last quarter, ranging by LA from 93.7% (Cardiff) to 98.3% (Bridgend). Eighteen LA areas achieved the target 95% uptake (Table 2).
4. Uptake of the first dose of MMR<sup>3</sup> in children reaching their second birthday (scheduled at 12 to 13 months of age) was 94.3% this quarter (compared to 94.2% last quarter) and ranged by LA from 87.2% (Merthyr Tydfil) to 96.8% (Ceredigion) (Figure 4 and Tables 1, 3). One Health Board (Betsi Cadwaladr University HB) and nine LA areas achieved the target of 95% uptake.
5. Uptake of the final dose of Pneumococcal Conjugate Vaccine (PCVf, scheduled at 12 to 13 months of age) by the second birthday decreased to 94.9% (compared to 95.1% last quarter). Uptake by LA ranged from 88.2% (Merthyr Tydfil) to 96.7% (Rhondda Cynon Taff) (Tables 1, 3). Eleven LA areas achieved an uptake in excess of 95%.
6. Uptake of the Hib/MenC booster (given at 12 months of age) in children reaching two years of age during this quarter decreased to 94.1% (compared to 94.5% last quarter), ranging by LA from 87.7% (Merthyr Tydfil) to 96.2% (Vale of Glamorgan) (Tables 1, 3). Nine LA areas achieved uptakes in excess of 95%.
7. In children reaching five years of age this quarter, uptake of one dose of MMR increased to 96.0% (from 95.6% last quarter). Uptake of two doses of MMR increased to 89.9%, compared to 89.1% last quarter. Uptake of two doses of MMR ranged by Health Board from 88.0% to 92.5% and by LA from 83.7% (Pembrokeshire) to 94.5% (Torfaen) (Figure 5, Table 4). No LA area exceeded 95% uptake for two doses of MMR by five years of age but twelve LA areas exceeded 90%.
8. Uptake of the "4 in 1" DTaP/IPV<sup>4</sup> pre-school booster in children reaching their fifth birthday increased to 91.5% this quarter (from 90.8% last quarter), ranging by Health Board from 89.9% to 93.3% and by LA from 85.3% (Pembrokeshire) to 96.0% (Torfaen) (Tables 1, 4). Two LA areas, Torfaen and Gwynedd, achieved the 95% uptake target and 14 LA areas had uptakes in excess of 90% (Figure 6, Table 4).
9. Coverage of a two dose primary course of MenC in children reaching their fifth birthday this quarter was 95.0% (compared to 94.7% last quarter). Coverage ranged by Health Board from 93.3% to 97.0% and by LA from 91.1% (Ceredigion) to 98.9% (Bridgend and Torfaen).
10. Uptake of the first dose of HPV vaccine in girls in the 2012-13 School Year 8 (reaching their 13<sup>th</sup> birthday between 01/09/2012 and 31/08/2013) was 85.7% (Table 5) and uptake of two doses was 68.1%. Data entry for HPV dose two immunisation sessions would still have been underway at the time that data for this report was extracted and uptake is expected to increase. Immunisation sessions for the third and final dose of the routine programme would not have started yet; uptake of dose 3 will be reported later in 2013. Coverage of HPV vaccination in 2011-12 School Year 8 group (girls turning 14 years of age during 01/09/12 to 31/08/13) was at 89.5%, 88.4% and 85.8% for one, two and three doses respectively (Table 5).
11. Coverage of two doses of MMR in children reaching 16 years of age this quarter was 82.4% (Table 7), ranging by LA from 71.1% (Monmouthshire) to 92.7% (Wrexham). Uptake of one dose of MMR was 91.0%, ranging by LA from 83.8% (Monmouthshire) to 97.2% (Wrexham). Uptake of a full course (two doses of MMR) of immunisation against rubella in 16 year old girls this quarter was 82.5% and uptake of only one dose was 91.2%.
12. National uptake of the Td/IPV<sup>5</sup> teenage booster in children reaching 16 years of age this quarter was 76.8% (Table 7), ranging by LA from 30.2% (Pembrokeshire) to 86.8% (Ceredigion).

<sup>3</sup> MMR protects against measles, mumps and rubella infections.

<sup>4</sup> DTaP/IPV (and dTaP/IPV) vaccines boost protection against Diphtheria, Tetanus, Pertussis and Polio infection before school entry

<sup>5</sup> Td/IPV boosts protection against Diphtheria, Tetanus and Polio infection before entering adulthood

<sup>6</sup> BCG protects against tuberculosis infection.

<sup>7</sup> Numbers of eligible children for BCG and hep B are not known

13. Coverage of a complete three dose course of HPV vaccine in girls reaching their 15<sup>th</sup> birthday during 01/09/12 to 31/08/13 (the 2012-13 year 10) is currently 86.4%. Coverage of a complete three dose course of HPV vaccine in girls reaching their 16<sup>th</sup> birthday during 01/09/12 to 31/08/13 (2012-13 year 11) is currently 83.7%. Coverage of a complete three dose course of HPV vaccine in girls reaching their 17<sup>th</sup> birthday during 01/09/12 to 31/08/13 (2012-13 year 12) is currently 87.2% (Table 8).
14. Uptake of BCG<sup>6</sup> immunisation is presented in Table 9. These data are based on notifications of BCG immunisations recorded in the National Community Child Health Database. BCG immunisation has been received by 7.0%, 6.6%, 6.8% and 2.8% of children reaching their first, second, fifth and 16<sup>th</sup> birthdays (respectively) during quarter four 2012. Highest proportions of children given BCG by one and two years of age this quarter were seen in Cardiff, Newport and Swansea LA's<sup>7</sup>.
15. Uptake of hepatitis B immunisation, recorded through the Child Health System is presented in Table 10. These data are based on reports of hep B immunisations recorded in the National Community Child Health database. Completed vaccination course percentages are only presented for children receiving the first dose of hepatitis B vaccine within seven days of birth. Fifty-five, 56 and 79 children reaching their 1<sup>st</sup>, 2<sup>nd</sup> and 5<sup>th</sup> birthdays during quarter four 2012, respectively, started hepatitis B immunisation courses in their first week of life. Of these children 74.5%, 66.1% and 84.8% (respectively) were recorded as having completed three doses of the hepatitis B schedule by those birthdays.

### Comment

Uptake of all routine immunisations scheduled for babies in their first year of life again exceeded 95% this quarter. Uptakes of routine immunisations in older children also showed progress toward 95%.

Although uptake rates for completed courses of MMR are higher than they have ever been in Wales, measles remains a concern. During 2012 there was a sharp increase in confirmed cases, mainly associated with school aged children and the provisional number of 116 confirmed cases in Wales during 2012 is the second highest annual total seen since before 1996 [1]. An outbreak currently affecting school children and teenagers in Mid and West Wales has already led to confirmed cases of measles during 2013 and Public Health Wales is working with Health Boards to remind parents of the importance of ensuring that their children have received two doses of MMR vaccine [2]. In addition to this, immunisation status checks by Health Board Health Professionals when children start primary and secondary schools, and opportunistic offering of catch-up doses remain essential in reducing the numbers of measles cases seen in Wales.

Confirmed cases of whooping cough (pertussis) also remain elevated in Wales. Between the start of 2012 and the end of November there were 302 confirmed cases in Wales, including 22 cases aged younger than three months [3]. The total number of cases confirmed in Wales from January to November 2012 is more than four times higher than the annual total for 2011. During 2012, in England and Wales as a whole, there have been 9,741 confirmed cases and 14 deaths in infants aged younger than three months [4].

In order to protect babies too young to receive their first vaccination, it is currently recommended that pregnant women are offered pertussis vaccination, ideally after week 28 of their pregnancy. The purpose of this temporary vaccination programme is to boost immunity in pregnant women so that pertussis specific antibodies are passed to their unborn babies, to protect them until they can receive their first routine immunisations at eight weeks of age.

[1] Public Health Wales Health Protection Division. Measles in Wales: 1996-2012. Public Health Wales; 2012 [cited 18 February 2013] available from:

<http://www.wales.nhs.uk/sites3/page.cfm?orgId=457&pid=25444>

[2] Public Health Wales. Parents urged to vaccinate children after increase in measles cases (News story – 31 January 2013). Public Health Wales; 2012 [cited 18 February 2013] available from:

<http://www.wales.nhs.uk/sitesplus/888/news/25820>

[3] Public Health Wales Health Protection Division. Pertussis in Wales: 1998-2012. Public Health Wales; 2012 [cited 18 February 2013] available from:

[http://www.wales.nhs.uk/sites3/page.cfm?orgid=457&pid=58100#Pertussis\\_in\\_Wales:\\_1998-2012](http://www.wales.nhs.uk/sites3/page.cfm?orgid=457&pid=58100#Pertussis_in_Wales:_1998-2012)

[4] Health Protection Agency. Cases of whooping cough decline after record numbers in 2012 (press release – 1 February 2013) [cited 18 February 2013]. Available from:

<http://www.hpa.org.uk/NewsCentre/NationalPressReleases/2013PressReleases/130201Casesofwhoopingcoughdeclineafterrecordnumbers/>

### **Further information on MMR and measles**

For general information on measles in Wales, see: <http://www.wales.nhs.uk/sitesplus/888/page/43749>

For general information on MMR and other vaccinations, see:

<http://www.nhs.uk/Conditions/vaccinations/Pages/vaccination-schedule-age-checklist.aspx>

For information on follow up of children who have missed out on MMR vaccination (NHS Wales only),

see: <http://howis.wales.nhs.uk/sites3/page.cfm?orgid=474&pid=21347>

### **Further information on whooping cough and pertussis vaccination during pregnancy**

For general information on pertussis in Wales, see: <http://www.wales.nhs.uk/sitesplus/888/page/43691>

For general information on whooping cough vaccination in pregnancy, see:

<http://www.nhs.uk/conditions/pregnancy-and-baby/pages/whooping-cough-vaccination-pregnant.aspx>

For general information on whooping cough and pertussis vaccinations, see:

<http://www.nhs.uk/Conditions/vaccinations/Pages/vaccination-schedule-age-checklist.aspx>

Information for Health Professionals in Wales on the pertussis in pregnancy vaccination campaign can be found on (NHS Wales only): <http://howis.wales.nhs.uk/sites3/page.cfm?orgid=474&pid=52934>

### **Report prepared by Public Health Wales Vaccine Preventable Disease Programme and Communicable Disease Surveillance Centre.**

Data for this report was provided by NHS Wales Informatics Service from the National Community Child Health Database (NCCHD). The data was sourced from Community Child Health databases maintained by local Child Health Office staff in Trusts throughout Wales based on regular returns from doctors and nurses who immunise or advise on immunisation. Uptake data presented throughout are for LHB resident population, not for LHB GP practice populations. The maps, graphs and Table 1 are best viewed in colour.

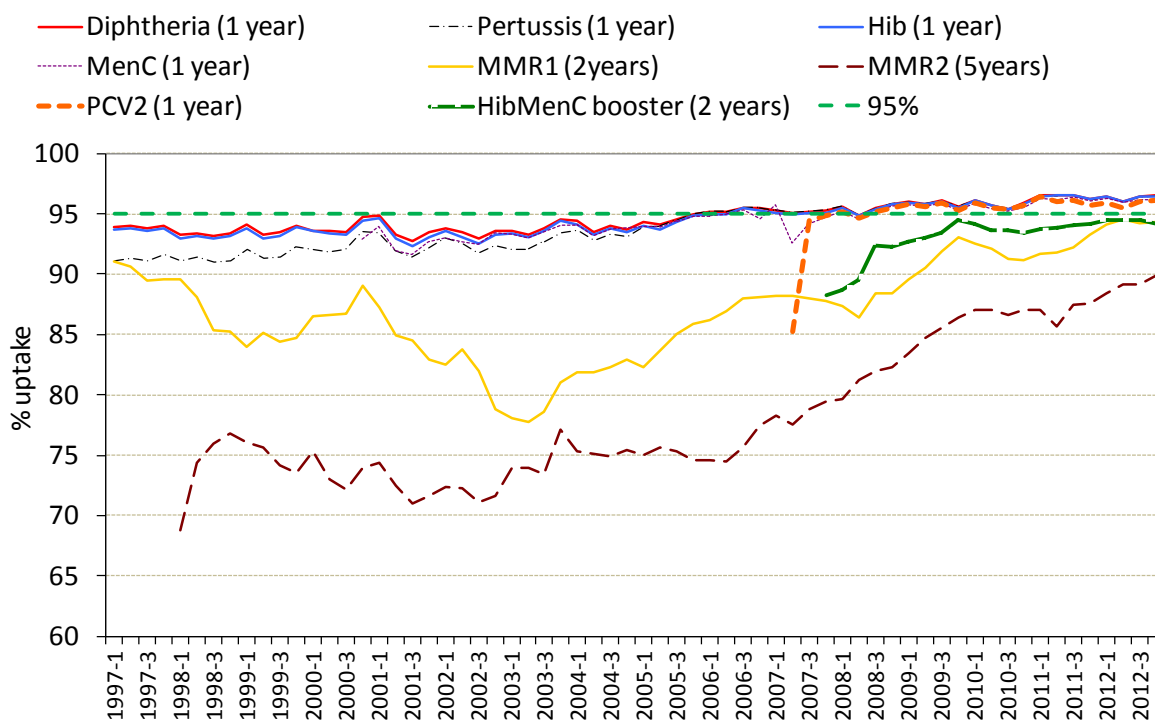
#### **Suggested citation for this report:**

Public Health Wales Health Protection Division. Vaccine uptake in Children in Wales, October to December 2012: COVER report 105, February 2013. Cardiff, Public Health Wales.

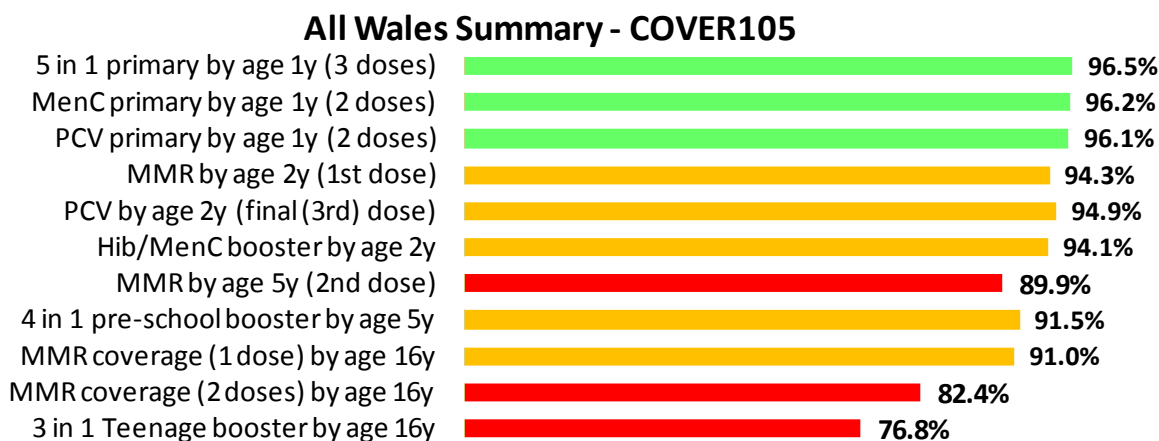
If you have any questions or suggestions on COVER reporting in Wales, please contact:

[surveillance.requests@wales.nhs.uk](mailto:surveillance.requests@wales.nhs.uk)

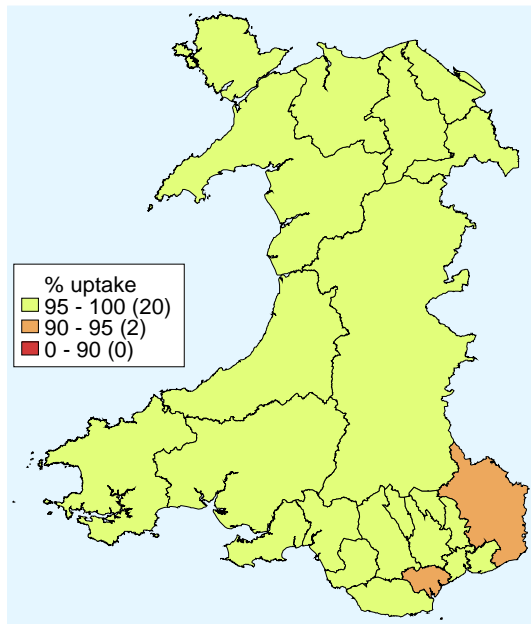
**Figure 1.** Percentage uptake of childhood immunisations in Wales, quarter 1 1997 to quarter 4 2012. Data are for children reaching 1 year of age each quarter for diphtheria, pertussis, Hib, MenC and pneumococcal conjugate vaccine (PCV2), children reaching 2 years of age for MMR1 (first dose) and the Hib MenC booster, and 5 years of age for MMR2 (second dose).



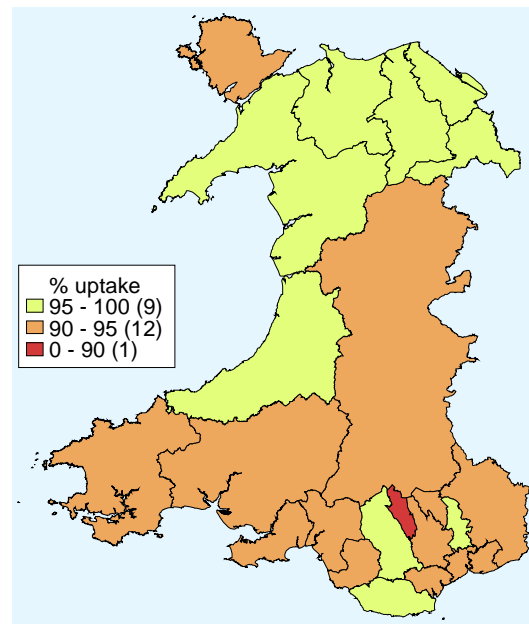
**Figure 2.** Summary of uptake rates for selected immunisations in resident children reaching their 1st, 2nd, 5th and 16th birthday between 01/10/12 and 31/12/12 and resident on 31/12/12.



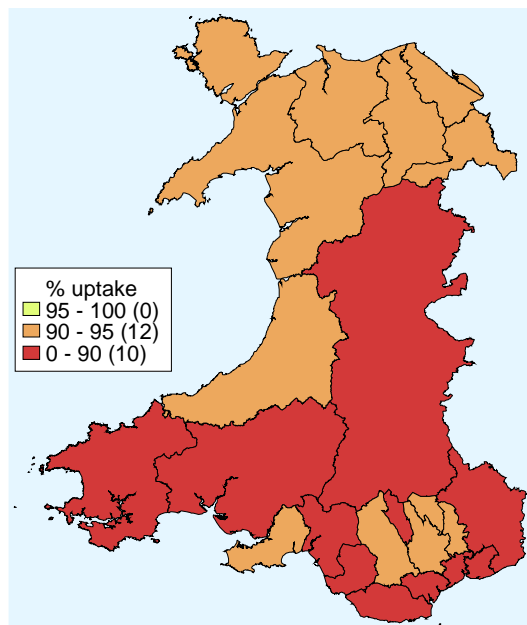
**Figure 3.** Uptake of 5 in 1 vaccine in Welsh Local Authority areas in children reaching their 1<sup>st</sup> birthday between 01/10/12 and 31/12/12.



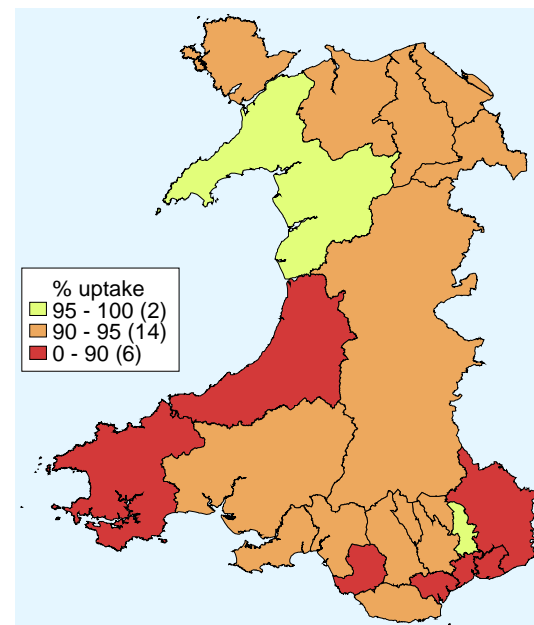
**Figure 4.** Uptake of at least 1 dose of MMR immunisation in Welsh Local Authority areas in children reaching their 2<sup>nd</sup> birthday between 01/10/12 and 31/12/12.



**Figure 5.** Uptake of two doses of MMR vaccine in Welsh Local Authority areas in children reaching their 5<sup>th</sup> birthday between 01/10/12 and 31/12/12.



**Figure 6.** Uptake of 4 in 1 vaccine in Welsh Local Authority areas in children reaching their 5<sup>th</sup> birthday between 01/10/12 and 31/12/12.



**Table 1.** Summary table with uptake of selected immunisations in resident children reaching their 1st, 2nd, 5th and 16th birthday between 01/10/12 and 31/12/12 and resident on 31/12/12.

Area	Age 1 year					Age 2 years						Age 5 years				Age 16 years								
	Resident children (n)	5 in 1* (n) (%)		MenC (n) (%)		Resident children (n)	MMR1 (n) (%)		PCV† (n) (%)		Hib/MenC booster (n) (%)		Resident children (n)	MMR2 (n) (%)		4 in 1 (n) (%)		Resident children (n)	MMR1 (n) (%)		MMR2 (n) (%)		3 in 1 Teenage booster** (n) (%)	
<b>Abertawe Bro Morgannwg University LHB</b>																								
Bridgend LA	459	451	98.3	452	98.5	418	388	92.8	395	94.5	392	93.8	348	305	87.6	309	88.8	460	426	92.6	398	86.5	385	83.7
Neath Port Talbot LA	405	393	97.0	392	96.8	402	374	93.0	380	94.5	376	93.5	363	321	88.4	327	90.1	421	376	89.3	337	80.0	337	80.0
Swansea LA	683	659	96.5	656	96.0	726	687	94.6	689	94.9	684	94.2	639	580	90.8	593	92.8	706	631	89.4	552	78.2	591	83.7
<b>Health Board Total</b>	<b>1547</b>	<b>1503</b>	<b>97.2</b>	<b>1500</b>	<b>97.0</b>	<b>1546</b>	<b>1449</b>	<b>93.7</b>	<b>1464</b>	<b>94.7</b>	<b>1452</b>	<b>93.9</b>	<b>1350</b>	<b>1206</b>	<b>89.3</b>	<b>1229</b>	<b>91.0</b>	<b>1587</b>	<b>1433</b>	<b>90.3</b>	<b>1287</b>	<b>81.1</b>	<b>1313</b>	<b>82.7</b>
<b>Aneurin Bevan LHB</b>																								
Blaenau Gwent LA	207	202	97.6	202	97.6	196	181	92.3	183	93.4	182	92.9	164	151	92.1	153	93.3	211	190	90.0	168	79.6	174	82.5
Caerphilly LA	532	518	97.4	516	97.0	586	556	94.9	557	95.1	557	95.1	545	496	91.0	502	92.1	525	468	89.1	407	77.5	432	82.3
Monmouthshire LA	208	196	94.2	196	94.2	233	220	94.4	220	94.4	220	94.4	211	185	87.7	190	90.0	315	264	83.8	224	71.1	251	79.7
Newport LA	491	471	95.9	470	95.7	525	489	93.1	489	93.1	484	92.2	483	424	87.8	431	89.2	515	455	88.3	402	78.1	382	74.2
Torfaen LA	262	259	98.9	259	98.9	261	249	95.4	250	95.8	246	94.3	274	259	94.5	263	96.0	309	289	93.5	265	85.8	240	77.7
<b>Health Board Total</b>	<b>1700</b>	<b>1646</b>	<b>96.8</b>	<b>1643</b>	<b>96.6</b>	<b>1801</b>	<b>1695</b>	<b>94.1</b>	<b>1699</b>	<b>94.3</b>	<b>1689</b>	<b>93.8</b>	<b>1677</b>	<b>1515</b>	<b>90.3</b>	<b>1539</b>	<b>91.8</b>	<b>1875</b>	<b>1666</b>	<b>88.9</b>	<b>1466</b>	<b>78.2</b>	<b>1479</b>	<b>78.9</b>
<b>Betsi Cadwaladr University LHB</b>																								
Anglesey LA	181	175	96.7	176	97.2	221	208	94.1	208	94.1	208	94.1	192	177	92.2	178	92.7	193	181	93.8	171	88.6	145	75.1
Conwy LA	279	271	97.1	270	96.8	265	253	95.5	255	96.2	252	95.1	277	257	92.8	254	91.7	320	306	95.6	296	92.5	269	84.1
Denbighshire LA	277	266	96.0	266	96.0	278	267	96.0	268	96.4	267	96.0	277	257	92.8	257	92.8	316	302	95.6	268	84.8	256	81.0
Flintshire LA	436	420	96.3	419	96.1	434	416	95.9	419	96.5	415	95.6	433	392	90.5	398	91.9	422	409	96.9	389	92.2	342	81.0
Gwynedd LA	338	329	97.3	328	97.0	300	290	96.7	286	95.3	286	95.3	321	301	93.8	307	95.6	388	361	93.0	348	89.7	300	77.3
Wrexham LA	408	395	96.8	394	96.6	452	435	96.2	435	96.2	432	95.6	397	371	93.5	375	94.5	355	345	97.2	329	92.7	274	77.2
<b>Health Board Total</b>	<b>1919</b>	<b>1856</b>	<b>96.7</b>	<b>1853</b>	<b>96.6</b>	<b>1950</b>	<b>1869</b>	<b>95.8</b>	<b>1871</b>	<b>95.9</b>	<b>1860</b>	<b>95.4</b>	<b>1897</b>	<b>1755</b>	<b>92.5</b>	<b>1769</b>	<b>93.3</b>	<b>1994</b>	<b>1904</b>	<b>95.5</b>	<b>1801</b>	<b>90.3</b>	<b>1586</b>	<b>79.5</b>
<b>Cardiff and Vale University LHB</b>																								
Cardiff LA	1259	1189	94.4	1181	93.8	1197	1120	93.6	1121	93.7	1102	92.1	1079	951	88.1	967	89.6	933	843	90.4	756	81.0	665	71.3
Vale of Glamorgan LA	380	366	96.3	363	95.5	313	300	95.8	301	96.2	301	96.2	373	329	88.2	339	90.9	412	374	90.8	352	85.4	330	80.1
<b>Health Board Total</b>	<b>1639</b>	<b>1555</b>	<b>94.9</b>	<b>1544</b>	<b>94.2</b>	<b>1510</b>	<b>1420</b>	<b>94.0</b>	<b>1422</b>	<b>94.2</b>	<b>1403</b>	<b>92.9</b>	<b>1452</b>	<b>1280</b>	<b>88.2</b>	<b>1306</b>	<b>89.9</b>	<b>1345</b>	<b>1217</b>	<b>90.5</b>	<b>1108</b>	<b>82.4</b>	<b>995</b>	<b>74.0</b>
<b>Cwm Taf LHB</b>																								
Merthyr Tydfil LA	210	202	96.2	201	95.7	187	163	87.2	165	88.2	164	87.7	193	169	87.6	174	90.2	194	174	89.7	154	79.4	133	68.6
Rhondda Cynon Taff LA	731	712	97.4	712	97.4	765	729	95.3	740	96.7	731	95.6	673	610	90.6	623	92.6	705	662	93.9	596	84.5	569	80.7
<b>Health Board Total</b>	<b>941</b>	<b>914</b>	<b>97.1</b>	<b>913</b>	<b>97.0</b>	<b>952</b>	<b>892</b>	<b>93.7</b>	<b>905</b>	<b>95.1</b>	<b>895</b>	<b>94.0</b>	<b>866</b>	<b>779</b>	<b>90.0</b>	<b>797</b>	<b>92.0</b>	<b>899</b>	<b>836</b>	<b>93.0</b>	<b>750</b>	<b>83.4</b>	<b>702</b>	<b>78.1</b>
<b>Hywel Dda LHB</b>																								
Carmarthenshire LA	493	480	97.4	479	97.2	535	495	92.5	507	94.8	504	94.2	516	464	89.9	484	93.8	523	469	89.7	411	78.6	410	78.4
Ceredigion LA	146	142	97.3	142	97.3	189	183	96.8	181	95.8	179	94.7	158	143	90.5	141	89.2	159	150	94.3	139	87.4	138	86.8
Pembrokeshire LA	322	308	95.7	307	95.3	346	328	94.8	334	96.5	332	96.0	326	273	83.7	278	85.3	367	326	88.8	285	77.7	111	30.2
<b>Health Board Total</b>	<b>961</b>	<b>930</b>	<b>96.8</b>	<b>928</b>	<b>96.6</b>	<b>1070</b>	<b>1006</b>	<b>94.0</b>	<b>1022</b>	<b>95.5</b>	<b>1015</b>	<b>94.9</b>	<b>1000</b>	<b>880</b>	<b>88.0</b>	<b>903</b>	<b>90.3</b>	<b>1049</b>	<b>945</b>	<b>90.1</b>	<b>835</b>	<b>79.6</b>	<b>659</b>	<b>62.8</b>
<b>Powys Teaching LHB</b>	<b>308</b>	<b>293</b>	<b>95.1</b>	<b>295</b>	<b>95.8</b>	<b>333</b>	<b>306</b>	<b>91.9</b>	<b>314</b>	<b>94.3</b>	<b>310</b>	<b>93.1</b>	<b>317</b>	<b>283</b>	<b>89.3</b>	<b>289</b>	<b>91.2</b>	<b>358</b>	<b>301</b>	<b>84.1</b>	<b>266</b>	<b>74.3</b>	<b>273</b>	<b>76.3</b>
Unknown	27	25	92.6	25	92.6	29	29	100.0	29	100.0	29	100.0	44	39	88.6	40	90.9	70	51	72.9	46	65.7	45	64.3
<b>Wales Total</b>	<b>9042</b>	<b>8722</b>	<b>96.5</b>	<b>8701</b>	<b>96.2</b>	<b>9191</b>	<b>8666</b>	<b>94.3</b>	<b>8726</b>	<b>94.9</b>	<b>8653</b>	<b>94.1</b>	<b>8603</b>	<b>7737</b>	<b>89.9</b>	<b>7872</b>	<b>91.5</b>	<b>9177</b>	<b>8353</b>	<b>91.0</b>	<b>7559</b>	<b>82.4</b>	<b>7052</b>	<b>76.8</b>

\* Uptake of pertussis used as proxy

\*\* Uptake of diphtheria (reinforcing booster dose) used as proxy

‡ Children receiving the final dose of PCV

	95% and higher
	90% to 95%
	below 90%

Cwm Taf Health Board has informed Public Health Wales of a significant problem concerning local data entry for immunisations given to Merthyr Tydfil resident children. As a result of this, the actual numbers of immunised children resident in Merthyr Tydfil LA, for quarter four 2012, are likely to be higher than the figures presented here.

**Table 2.** Vaccine uptake in children reaching their 1st birthday between 01/10/12 and 31/12/12 and resident on 31/12/12.

Area	Resident children	D3	T3	P3	Po3	Hib3	MMR1	MenC	PCV2*	HibMenCb
	(n)	(n) (%)	(n) (%)	(n) (%)	(n) (%)	(n) (%)	(n) (%)	(n) (%)	(n) (%)	(n) (%)
<b><u>Abertawe Bro Morgannwg University HB</u></b>										
Bridgend LA	459	451 98.3	451 98.3	451 98.3	451 98.3	451 98.3	0 0.0	452 98.5	451 98.3	0 0.0
Neath Port Talbot LA	405	393 97.0	393 97.0	393 97.0	393 97.0	393 97.0	3 0.7	392 96.8	392 96.8	4 1.0
Swansea LA	683	659 96.5	659 96.5	659 96.5	659 96.5	659 96.5	1 0.1	656 96.0	657 96.2	1 0.1
<b>Health Board Total</b>	<b>1547</b>	<b>1503 97.2</b>	<b>1503 97.2</b>	<b>1503 97.2</b>	<b>1503 97.2</b>	<b>1503 97.2</b>	<b>4 0.3</b>	<b>1500 97.0</b>	<b>1500 97.0</b>	<b>5 0.3</b>
<b><u>Aneurin Bevan HB</u></b>										
Blaenau Gwent LA	207	202 97.6	202 97.6	202 97.6	202 97.6	202 97.6	1 0.5	202 97.6	202 97.6	1 0.5
Caerphilly LA	532	518 97.4	518 97.4	518 97.4	518 97.4	518 97.4	10 1.9	516 97.0	517 97.2	4 0.8
Monmouthshire LA	208	196 94.2	196 94.2	196 94.2	196 94.2	196 94.2	0 0.0	196 94.2	195 93.8	1 0.5
Newport LA	491	471 95.9	471 95.9	471 95.9	471 95.9	471 95.9	1 0.2	470 95.7	470 95.7	0 0.0
Torfaen LA	262	259 98.9	259 98.9	259 98.9	259 98.9	259 98.9	2 0.8	259 98.9	256 97.7	2 0.8
<b>Health Board Total</b>	<b>1700</b>	<b>1646 96.8</b>	<b>1646 96.8</b>	<b>1646 96.8</b>	<b>1646 96.8</b>	<b>1646 96.8</b>	<b>14 0.8</b>	<b>1643 96.6</b>	<b>1640 96.5</b>	<b>8 0.5</b>
<b><u>Betsi Cadwaladr University HB</u></b>										
Anglesey LA	181	175 96.7	175 96.7	175 96.7	175 96.7	176 97.2	4 2.2	176 97.2	174 96.1	3 1.7
Conwy LA	279	271 97.1	271 97.1	271 97.1	271 97.1	271 97.1	6 2.2	270 96.8	270 96.8	6 2.2
Denbighshire LA	277	266 96.0	266 96.0	266 96.0	266 96.0	266 96.0	2 0.7	266 96.0	263 94.9	2 0.7
Flintshire LA	436	420 96.3	420 96.3	420 96.3	420 96.3	419 96.1	3 0.7	419 96.1	419 96.1	3 0.7
Gwynedd LA	338	329 97.3	329 97.3	329 97.3	329 97.3	329 97.3	1 0.3	328 97.0	327 96.7	1 0.3
Wrexham LA	408	395 96.8	395 96.8	395 96.8	395 96.8	395 96.8	2 0.5	394 96.6	395 96.8	1 0.2
<b>Health Board Total</b>	<b>1919</b>	<b>1856 96.7</b>	<b>1856 96.7</b>	<b>1856 96.7</b>	<b>1856 96.7</b>	<b>1856 96.7</b>	<b>18 0.9</b>	<b>1853 96.6</b>	<b>1848 96.3</b>	<b>16 0.8</b>
<b><u>Cardiff and Vale University HB</u></b>										
Cardiff LA	1259	1189 94.4	1189 94.4	1189 94.4	1189 94.4	1188 94.4	10 0.8	1181 93.8	1180 93.7	7 0.6
Vale of Glamorgan LA	380	366 96.3	366 96.3	366 96.3	366 96.3	366 96.3	1 0.3	363 95.5	365 96.1	1 0.3
<b>Health Board Total</b>	<b>1639</b>	<b>1555 94.9</b>	<b>1555 94.9</b>	<b>1555 94.9</b>	<b>1555 94.9</b>	<b>1554 94.8</b>	<b>11 0.7</b>	<b>1544 94.2</b>	<b>1545 94.3</b>	<b>8 0.5</b>
<b><u>Cwm Taf HB</u></b>										
Merthyr Tydfil LA	210	202 96.2	202 96.2	202 96.2	202 96.2	202 96.2	9 4.3	201 95.7	201 95.7	9 4.3
Rhondda Cynon Taff LA	731	712 97.4	712 97.4	712 97.4	712 97.4	712 97.4	9 1.2	712 97.4	712 97.4	3 0.4
<b>Health Board Total</b>	<b>941</b>	<b>914 97.1</b>	<b>914 97.1</b>	<b>914 97.1</b>	<b>914 97.1</b>	<b>914 97.1</b>	<b>18 1.9</b>	<b>913 97.0</b>	<b>913 97.0</b>	<b>12 1.3</b>
<b><u>Hywel Dda HB</u></b>										
Carmarthenshire LA	493	480 97.4	480 97.4	480 97.4	480 97.4	480 97.4	2 0.4	479 97.2	477 96.8	1 0.2
Ceredigion LA	146	142 97.3	142 97.3	142 97.3	142 97.3	142 97.3	0 0.0	142 97.3	142 97.3	0 0.0
Pembrokeshire LA	322	308 95.7	308 95.7	308 95.7	308 95.7	308 95.7	0 0.0	307 95.3	307 95.3	0 0.0
<b>Health Board Total</b>	<b>961</b>	<b>930 96.8</b>	<b>930 96.8</b>	<b>930 96.8</b>	<b>930 96.8</b>	<b>930 96.8</b>	<b>2 0.2</b>	<b>928 96.6</b>	<b>926 96.4</b>	<b>1 0.1</b>
<b><u>Powys Teaching HB</u></b>	<b>308</b>	<b>293 95.1</b>	<b>293 95.1</b>	<b>293 95.1</b>	<b>293 95.1</b>	<b>293 95.1</b>	<b>14 4.5</b>	<b>295 95.8</b>	<b>292 94.8</b>	<b>14 4.5</b>
Unknown	27	25 92.6	25 92.6	25 92.6	25 92.6	25 92.6	0 0.0	25 92.6	25 92.6	0 0.0
<b>Wales Total</b>	<b>9042</b>	<b>8722 96.5</b>	<b>8722 96.5</b>	<b>8722 96.5</b>	<b>8722 96.5</b>	<b>8722 96.5</b>	<b>81 0.9</b>	<b>8701 96.2</b>	<b>8689 96.1</b>	<b>64 0.7</b>

\* Full primary 2 dose course of pneumococcal conjugate vaccine

**Table 3.** Vaccine uptake in children reaching their 2nd birthday between 01/10/12 and 31/12/12 and resident on 31/12/12.

Area	Resident children	D3	T3	P3	Po3	Hib3	MMR1	MenC*	PCV2**	PCVf***	HibMenCb
	(n)	(n) (%)	(n) (%)	(n) (%)	(n) (%)	(n) (%)	(n) (%)	(n) (%)	(n) (%)	(n) (%)	(n) (%)
<b>Abertawe Bro Morgannwg University HB</b>											
Bridgend LA	418	408 97.6	408 97.6	408 97.6	408 97.6	408 97.6	388 92.8	407 97.4	402 96.2	395 94.5	392 93.8
Neath Port Talbot LA	402	397 98.8	397 98.8	397 98.8	397 98.8	397 98.8	374 93.0	394 98.0	391 97.3	380 94.5	376 93.5
Swansea LA	726	708 97.5	708 97.5	708 97.5	708 97.5	708 97.5	687 94.6	702 96.7	696 95.9	689 94.9	684 94.2
<b>Health Board Total</b>	<b>1546</b>	<b>1513 97.9</b>	<b>1513 97.9</b>	<b>1513 97.9</b>	<b>1513 97.9</b>	<b>1513 97.9</b>	<b>1449 93.7</b>	<b>1503 97.2</b>	<b>1489 96.3</b>	<b>1464 94.7</b>	<b>1452 93.9</b>
<b>Aneurin Bevan HB</b>											
Blaenau Gwent LA	196	194 99.0	194 99.0	194 99.0	194 99.0	194 99.0	181 92.3	193 98.5	192 98.0	183 93.4	182 92.9
Caerphilly LA	586	576 98.3	576 98.3	576 98.3	576 98.3	576 98.3	556 94.9	577 98.5	567 96.8	557 95.1	557 95.1
Monmouthshire LA	233	222 95.3	222 95.3	222 95.3	222 95.3	222 95.3	220 94.4	220 94.4	219 94.0	220 94.4	220 94.4
Newport LA	525	511 97.3	511 97.3	511 97.3	511 97.3	511 97.3	489 93.1	500 95.2	496 94.5	489 93.1	484 92.2
Torfaen LA	261	255 97.7	255 97.7	255 97.7	255 97.7	255 97.7	249 95.4	252 96.6	251 96.2	250 95.8	246 94.3
<b>Health Board Total</b>	<b>1801</b>	<b>1758 97.6</b>	<b>1758 97.6</b>	<b>1758 97.6</b>	<b>1758 97.6</b>	<b>1758 97.6</b>	<b>1695 94.1</b>	<b>1742 96.7</b>	<b>1725 95.8</b>	<b>1699 94.3</b>	<b>1689 93.8</b>
<b>Betsi Cadwaladr University HB</b>											
Anglesey LA	221	217 98.2	217 98.2	217 98.2	217 98.2	217 98.2	208 94.1	217 98.2	216 97.7	208 94.1	208 94.1
Conwy LA	265	261 98.5	261 98.5	261 98.5	261 98.5	261 98.5	253 95.5	258 97.4	252 95.1	255 96.2	252 95.1
Denbighshire LA	278	271 97.5	271 97.5	271 97.5	271 97.5	271 97.5	267 96.0	266 95.7	263 94.6	268 96.4	267 96.0
Flintshire LA	434	431 99.3	431 99.3	431 99.3	431 99.3	431 99.3	416 95.9	429 98.8	419 96.5	419 96.5	415 95.6
Gwynedd LA	300	295 98.3	295 98.3	295 98.3	295 98.3	295 98.3	290 96.7	289 96.3	291 97.0	286 95.3	286 95.3
Wrexham LA	452	442 97.8	442 97.8	442 97.8	441 97.6	441 97.6	435 96.2	434 96.0	431 95.4	435 96.2	432 95.6
<b>Health Board Total</b>	<b>1950</b>	<b>1917 98.3</b>	<b>1917 98.3</b>	<b>1917 98.3</b>	<b>1916 98.3</b>	<b>1916 98.3</b>	<b>1869 95.8</b>	<b>1893 97.1</b>	<b>1872 96.0</b>	<b>1871 95.9</b>	<b>1860 95.4</b>
<b>Cardiff and Vale University HB</b>											
Cardiff LA	1197	1150 96.1	1150 96.1	1149 96.0	1151 96.2	1148 95.9	1120 93.6	1130 94.4	1111 92.8	1121 93.7	1102 92.1
Vale of Glamorgan LA	313	309 98.7	309 98.7	308 98.4	309 98.7	308 98.4	300 95.8	307 98.1	303 96.8	301 96.2	301 96.2
<b>Health Board Total</b>	<b>1510</b>	<b>1459 96.6</b>	<b>1459 96.6</b>	<b>1457 96.5</b>	<b>1460 96.7</b>	<b>1456 96.4</b>	<b>1420 94.0</b>	<b>1437 95.2</b>	<b>1414 93.6</b>	<b>1422 94.2</b>	<b>1403 92.9</b>
<b>Cwm Taf HB</b>											
Merthyr Tydfil LA	187	181 96.8	181 96.8	181 96.8	181 96.8	181 96.8	163 87.2	181 96.8	181 96.8	165 88.2	164 87.7
Rhondda Cynon Taff LA	765	753 98.4	753 98.4	753 98.4	753 98.4	753 98.4	729 95.3	752 98.3	743 97.1	740 96.7	731 95.6
<b>Health Board Total</b>	<b>952</b>	<b>934 98.1</b>	<b>934 98.1</b>	<b>934 98.1</b>	<b>934 98.1</b>	<b>934 98.1</b>	<b>892 93.7</b>	<b>933 98.0</b>	<b>924 97.1</b>	<b>905 95.1</b>	<b>895 94.0</b>
<b>Hywel Dda HB</b>											
Carmarthenshire LA	535	522 97.6	522 97.6	522 97.6	522 97.6	522 97.6	495 92.5	517 96.6	508 95.0	507 94.8	504 94.2
Ceredigion LA	189	184 97.4	184 97.4	184 97.4	184 97.4	183 96.8	183 96.8	182 96.3	180 95.2	181 95.8	179 94.7
Pembrokeshire LA	346	340 98.3	340 98.3	340 98.3	339 98.0	339 98.0	328 94.8	336 97.1	334 96.5	334 96.5	332 96.0
<b>Health Board Total</b>	<b>1070</b>	<b>1046 97.8</b>	<b>1046 97.8</b>	<b>1046 97.8</b>	<b>1045 97.7</b>	<b>1044 97.6</b>	<b>1006 94.0</b>	<b>1035 96.7</b>	<b>1022 95.5</b>	<b>1022 95.5</b>	<b>1015 94.9</b>
<b>Powys Teaching HB</b>	<b>333</b>	<b>326 97.9</b>	<b>326 97.9</b>	<b>326 97.9</b>	<b>326 97.9</b>	<b>326 97.9</b>	<b>306 91.9</b>	<b>323 97.0</b>	<b>323 97.0</b>	<b>314 94.3</b>	<b>310 93.1</b>
Unknown	29	29 100.0	29 100.0	29 100.0	29 100.0	29 100.0	29 100.0	29 100.0	29 100.0	29 100.0	29 100.0
<b>Wales Total</b>	<b>9191</b>	<b>8982 97.7</b>	<b>8982 97.7</b>	<b>8980 97.7</b>	<b>8981 97.7</b>	<b>8972 97.6</b>	<b>8666 94.3</b>	<b>8895 96.8</b>	<b>8798 95.7</b>	<b>8726 94.9</b>	<b>8653 94.1</b>

\* Reflects uptake of the completed primary course in this age group

\*\* Full primary 2 dose course of pneumococcal conjugate vaccine

\*\*\* Final (booster) dose of pneumococcal conjugate vaccine

*Cwm Taf Health Board has informed Public Health Wales of a significant problem concerning local data entry for immunisations given to Merthyr Tydfil resident children. As a result of this, the actual numbers of immunised children resident in Merthyr Tydfil LA, for quarter four 2012, are likely to be higher than the figures presented here.*

**Table 4.** Vaccine uptake in children reaching their 5th birthday between 01/10/12 and 31/12/12 and resident on 31/12/12.

Area	Resident children	D3	T3	P3	Po3	Hib3	MenC*	PCVf**	HibMenCb	MMR1	MMR2	D4	T4	aP	Po4
	(n)	(n) (%)	(n) (%)	(n) (%)	(n) (%)	(n) (%)	(n) (%)	(n) (%)	(n) (%)	(n) (%)	(n) (%)	(n) (%)	(n) (%)	(n) (%)	(n) (%)
<b>Abertawe Bro Morgannwg University HB</b>															
Bridgend LA	348	345 99.1	345 99.1	345 99.1	345 99.1	345 99.1	344 98.9	336 96.6	336 96.6	335 96.3	305 87.6	309 88.8	309 88.8	309 88.8	309 88.8
Neath Port Talbot LA	363	352 97.0	352 97.0	352 97.0	351 96.7	350 96.4	344 94.8	329 90.6	344 94.8	352 97.0	321 88.4	327 90.1	327 90.1	327 90.1	327 90.1
Swansea LA	639	624 97.7	624 97.7	624 97.7	624 97.7	620 97.0	601 94.1	597 93.4	607 95.0	615 96.2	580 90.8	593 92.8	593 92.8	593 92.8	591 92.5
<b>Health Board Total</b>	<b>1350</b>	<b>1321 97.9</b>	<b>1321 97.9</b>	<b>1321 97.9</b>	<b>1320 97.8</b>	<b>1315 97.4</b>	<b>1289 95.5</b>	<b>1262 93.5</b>	<b>1287 95.3</b>	<b>1302 96.4</b>	<b>1206 89.3</b>	<b>1229 91.0</b>	<b>1229 91.0</b>	<b>1229 91.0</b>	<b>1227 90.9</b>
<b>Aneurin Bevan HB</b>															
Blaenau Gwent LA	164	161 98.2	161 98.2	161 98.2	161 98.2	161 98.2	159 97.0	146 89.0	155 94.5	159 97.0	151 92.1	153 93.3	153 93.3	153 93.3	153 93.3
Caerphilly LA	545	537 98.5	537 98.5	537 98.5	537 98.5	537 98.5	536 98.3	514 94.3	531 97.4	530 97.2	496 91.0	503 92.3	503 92.3	502 92.1	502 92.1
Monmouthshire LA	211	194 91.9	194 91.9	194 91.9	194 91.9	194 91.9	193 91.5	188 89.1	192 91.0	195 92.4	185 87.7	190 90.0	190 90.0	190 90.0	190 90.0
Newport LA	483	459 95.0	459 95.0	459 95.0	455 94.2	455 94.2	442 91.5	431 89.2	442 91.5	460 95.2	424 87.8	431 89.2	431 89.2	431 89.2	431 89.2
Torfaen LA	274	271 98.9	271 98.9	271 98.9	271 98.9	271 98.9	271 98.9	259 94.5	265 96.7	271 98.9	259 94.5	263 96.0	263 96.0	263 96.0	263 96.0
<b>Health Board Total</b>	<b>1677</b>	<b>1622 96.7</b>	<b>1622 96.7</b>	<b>1622 96.7</b>	<b>1618 96.5</b>	<b>1618 96.5</b>	<b>1601 95.5</b>	<b>1538 91.7</b>	<b>1585 94.5</b>	<b>1615 96.3</b>	<b>1515 90.3</b>	<b>1540 91.8</b>	<b>1540 91.8</b>	<b>1539 91.8</b>	<b>1539 91.8</b>
<b>Betsi Cadwaladr University HB</b>															
Anglesey LA	192	186 96.9	186 96.9	186 96.9	186 96.9	186 96.9	183 95.3	179 93.2	181 94.3	184 95.8	177 92.2	178 92.7	178 92.7	178 92.7	178 92.7
Conwy LA	277	272 98.2	272 98.2	272 98.2	272 98.2	272 98.2	265 95.7	262 94.6	264 95.3	271 97.8	257 92.8	254 91.7	254 91.7	254 91.7	254 91.7
Denbighshire LA	277	272 98.2	272 98.2	272 98.2	272 98.2	271 97.8	267 96.4	256 92.4	267 96.4	270 97.5	257 92.8	257 92.8	257 92.8	257 92.8	257 92.8
Flintshire LA	433	413 95.4	413 95.4	413 95.4	413 95.4	413 95.4	407 94.0	389 89.8	402 92.8	406 93.8	392 90.5	398 91.9	398 91.9	398 91.9	398 91.9
Gwynedd LA	321	316 98.4	316 98.4	316 98.4	316 98.4	315 98.1	308 96.0	297 92.5	309 96.3	312 97.2	301 93.8	307 95.6	307 95.6	307 95.6	308 96.0
Wrexham LA	397	387 97.5	387 97.5	387 97.5	386 97.2	387 97.5	376 94.7	368 92.7	375 94.5	384 96.7	371 93.5	375 94.5	375 94.5	375 94.5	375 94.5
<b>Health Board Total</b>	<b>1897</b>	<b>1846 97.3</b>	<b>1846 97.3</b>	<b>1846 97.3</b>	<b>1845 97.3</b>	<b>1844 97.2</b>	<b>1806 95.2</b>	<b>1751 92.3</b>	<b>1798 94.8</b>	<b>1827 96.3</b>	<b>1755 92.5</b>	<b>1769 93.3</b>	<b>1769 93.3</b>	<b>1769 93.3</b>	<b>1770 93.3</b>
<b>Cardiff and Vale University HB</b>															
Cardiff LA	1079	1046 96.9	1046 96.9	1045 96.8	1045 96.8	1041 96.5	991 91.8	974 90.3	991 91.8	1035 95.9	951 88.1	969 89.8	969 89.8	967 89.6	970 89.9
Vale of Glamorgan LA	373	370 99.2	370 99.2	370 99.2	369 98.9	369 98.9	363 97.3	345 92.5	356 95.4	361 96.8	329 88.2	339 90.9	339 90.9	339 90.9	339 90.9
<b>Health Board Total</b>	<b>1452</b>	<b>1416 97.5</b>	<b>1416 97.5</b>	<b>1415 97.5</b>	<b>1414 97.4</b>	<b>1410 97.1</b>	<b>1354 93.3</b>	<b>1319 90.8</b>	<b>1347 92.8</b>	<b>1396 96.1</b>	<b>1280 88.2</b>	<b>1308 90.1</b>	<b>1308 90.1</b>	<b>1306 89.9</b>	<b>1309 90.2</b>
<b>Cwm Taf HB</b>															
Merthyr Tydfil LA	193	185 95.9	185 95.9	185 95.9	184 95.3	185 95.9	182 94.3	179 92.7	179 92.7	181 93.8	169 87.6	174 90.2	174 90.2	174 90.2	174 90.2
Rhondda Cynon Taff LA	673	662 98.4	662 98.4	662 98.4	662 98.4	661 98.2	658 97.8	635 94.4	648 96.3	652 96.9	610 90.6	623 92.6	623 92.6	623 92.6	623 92.6
<b>Health Board Total</b>	<b>866</b>	<b>847 97.8</b>	<b>847 97.8</b>	<b>847 97.8</b>	<b>846 97.7</b>	<b>846 97.7</b>	<b>840 97.0</b>	<b>814 94.0</b>	<b>827 95.5</b>	<b>833 96.2</b>	<b>779 90.0</b>	<b>797 92.0</b>	<b>797 92.0</b>	<b>797 92.0</b>	<b>797 92.0</b>
<b>Hywel Dda HB</b>															
Carmarthenshire LA	516	501 97.1	501 97.1	501 97.1	499 96.7	497 96.3	493 95.5	475 92.1	490 95.0	493 95.5	464 89.9	484 93.8	484 93.8	484 93.8	483 93.6
Ceredigion LA	158	147 93.0	147 93.0	147 93.0	147 93.0	147 93.0	144 91.1	141 89.2	144 91.1	147 93.0	143 90.5	141 89.2	141 89.2	141 89.2	141 89.2
Pembrokeshire LA	326	308 94.5	308 94.5	308 94.5	308 94.5	308 94.5	299 91.7	287 88.0	298 91.4	308 94.5	273 83.7	278 85.3	278 85.3	278 85.3	278 85.3
<b>Health Board Total</b>	<b>1000</b>	<b>956 95.6</b>	<b>956 95.6</b>	<b>956 95.6</b>	<b>954 95.4</b>	<b>952 95.2</b>	<b>936 93.6</b>	<b>903 90.3</b>	<b>932 93.2</b>	<b>948 94.8</b>	<b>880 88.0</b>	<b>903 90.3</b>	<b>903 90.3</b>	<b>903 90.3</b>	<b>902 90.2</b>
<b>Powys Teaching HB</b>	<b>317</b>	<b>306 96.5</b>	<b>306 96.5</b>	<b>306 96.5</b>	<b>306 96.5</b>	<b>303 95.6</b>	<b>302 95.3</b>	<b>285 89.9</b>	<b>296 93.4</b>	<b>300 94.6</b>	<b>283 89.3</b>	<b>289 91.2</b>	<b>289 91.2</b>	<b>289 91.2</b>	<b>289 91.2</b>
Unknown	44	42 95.5	42 95.5	42 95.5	42 95.5	42 95.5	43 97.7	40 90.9	41 93.2	40 90.9	39 88.6	40 90.9	40 90.9	40 90.9	40 90.9
<b>Wales Total</b>	<b>8603</b>	<b>8356 97.1</b>	<b>8356 97.1</b>	<b>8355 97.1</b>	<b>8345 97.0</b>	<b>8330 96.8</b>	<b>8171 95.0</b>	<b>7912 92.0</b>	<b>8113 94.3</b>	<b>8261 96.0</b>	<b>7737 89.9</b>	<b>7875 91.5</b>	<b>7875 91.5</b>	<b>7872 91.5</b>	<b>7873 91.5</b>

\* Complete three dose course, or two doses with the second delivered after 115 days of age

\*\* Final (booster) dose of pneumococcal conjugate vaccine

*Cwm Taf Health Board has informed Public Health Wales of a significant problem concerning local data entry for immunisations given to Merthyr Tydfil resident children. As a result of this, the actual numbers of immunised children resident in Merthyr Tydfil LA, for quarter four 2012, are likely to be higher than the figures presented here.*

**Table 5.** Uptake of HPV vaccine in girls reaching 13 and 14 years of age between 01/09/12 and 31/08/13 and resident in Wales on 31/12/12.

Area	13 years (2012-13 School Year 8)*							14 years (2012-13 School Year 9)						
	Resident girls (n)	HPV 1 dose (n) (%)	HPV 2 doses (n) (%)	HPV 3 doses (n) (%)	Resident girls (n)	HPV 1 dose (n) (%)	HPV 2 doses (n) (%)	HPV 3 doses (n) (%)						
<b>Abertawe Bro Morgannwg University HB</b>														
Bridgend LA	723	670 92.7	609 84.2	1 0.1	776	703 90.6	694 89.4	681 87.8						
Neath Port Talbot LA	666	613 92.0	541 81.2	0 0.0	726	658 90.6	652 89.8	637 87.7						
Swansea LA	1210	1100 90.9	989 81.7	0 0.0	1169	1058 90.5	1043 89.2	1025 87.7						
<b>Health Board Total</b>	<b>2599</b>	<b>2383 91.7</b>	<b>2139 82.3</b>	<b>1 0.0</b>	<b>2671</b>	<b>2419 90.6</b>	<b>2389 89.4</b>	<b>2343 87.7</b>						
<b>Aneurin Bevan HB</b>														
Blaenau Gwent LA	370	335 90.5	223 60.3	0 0.0	380	360 94.7	357 93.9	345 90.8						
Caerphilly LA	918	813 88.6	715 77.9	1 0.1	1000	920 92.0	911 91.1	887 88.7						
Monmouthshire LA	523	407 77.8	361 69.0	0 0.0	521	409 78.5	406 77.9	393 75.4						
Newport LA	868	760 87.6	647 74.5	1 0.1	932	800 85.8	789 84.7	756 81.1						
Torfaen LA	478	415 86.8	300 62.8	0 0.0	539	492 91.3	488 90.5	466 86.5						
<b>Health Board Total</b>	<b>3157</b>	<b>2730 86.5</b>	<b>2246 71.1</b>	<b>2 0.1</b>	<b>3372</b>	<b>2981 88.4</b>	<b>2951 87.5</b>	<b>2847 84.4</b>						
<b>Betsi Cadwaladr University HB</b>														
Anglesey LA	356	306 86.0	290 81.5	0 0.0	364	323 88.7	320 87.9	308 84.6						
Conwy LA	581	378 65.1	367 63.2	0 0.0	595	536 90.1	533 89.6	521 87.6						
Denbighshire LA	496	395 79.6	393 79.2	1 0.2	547	480 87.8	478 87.4	468 85.6						
Flintshire LA	798	717 89.8	601 75.3	0 0.0	782	720 92.1	712 91.0	701 89.6						
Gwynedd LA	606	533 88.0	501 82.7	0 0.0	643	567 88.2	562 87.4	552 85.8						
Wrexham LA	708	606 85.6	567 80.1	0 0.0	671	601 89.6	596 88.8	589 87.8						
<b>Health Board Total</b>	<b>3545</b>	<b>2935 82.8</b>	<b>2719 76.7</b>	<b>1 0.0</b>	<b>3602</b>	<b>3227 89.6</b>	<b>3201 88.9</b>	<b>3139 87.1</b>						
<b>Cardiff and Vale University HB</b>														
Cardiff LA	1795	1439 80.2	402 22.4	0 0.0	1797	1589 88.4	1540 85.7	1428 79.5						
Vale of Glamorgan LA	706	612 86.7	195 27.6	0 0.0	717	663 92.5	652 90.9	620 86.5						
<b>Health Board Total</b>	<b>2501</b>	<b>2051 82.0</b>	<b>597 23.9</b>	<b>0 0.0</b>	<b>2514</b>	<b>2252 89.6</b>	<b>2192 87.2</b>	<b>2048 81.5</b>						
<b>Cwm Taf HB</b>														
Merthyr Tydfil LA	317	288 90.9	266 83.9	0 0.0	306	285 93.1	283 92.5	281 91.8						
Rhondda Cynon Taff LA	1180	1092 92.5	1041 88.2	0 0.0	1248	1186 95.0	1178 94.4	1150 92.1						
<b>Health Board Total</b>	<b>1497</b>	<b>1380 92.2</b>	<b>1307 87.3</b>	<b>0 0.0</b>	<b>1554</b>	<b>1471 94.7</b>	<b>1461 94.0</b>	<b>1431 92.1</b>						
<b>Hywel Dda HB</b>														
Carmarthenshire LA	848	756 89.2	725 85.5	0 0.0	931	836 89.8	834 89.6	828 88.9						
Ceredigion LA	303	254 83.8	249 82.2	0 0.0	303	257 84.8	253 83.5	252 83.2						
Pembrokeshire LA	629	537 85.4	446 70.9	0 0.0	651	568 87.3	558 85.7	533 81.9						
<b>Health Board Total</b>	<b>1780</b>	<b>1547 86.9</b>	<b>1420 79.8</b>	<b>0 0.0</b>	<b>1885</b>	<b>1661 88.1</b>	<b>1645 87.3</b>	<b>1613 85.6</b>						
<b>Powys Teaching HB</b>	<b>640</b>	<b>456 71.3</b>	<b>287 44.8</b>	<b>1 0.2</b>	<b>690</b>	<b>582 84.3</b>	<b>578 83.8</b>	<b>565 81.9</b>						
Unknown	88	64 72.7	51 58.0	0 0.0	96	66 68.8	66 68.8	65 67.7						
<b>Wales Total</b>	<b>15807</b>	<b>13546 85.7</b>	<b>10766 68.1</b>	<b>5 0.0</b>	<b>16384</b>	<b>14659 89.5</b>	<b>14483 88.4</b>	<b>14051 85.8</b>						

\* Current campaign, data entry for immunisation sessions may still be underway.

**Table 6.** MMR and Td/IPV vaccine uptake in children reaching their 15th birthday between 01/10/12 and 31/12/12 and resident on 31/12/12 (with breakdown of MMR1 and MMR2 coverage by sex).

Area	Resident children		MMR1		MMR2		Teenage 3 in 1 booster*		Resident girls		MMR1 (girls)		MMR2 (girls)		Resident boys		MMR1 (boys)		MMR2 (boys)	
	(n)	(n)	(%)	(n)	(%)	(n)	(%)	(n)	(n)	(n)	(%)	(n)	(%)	(n)	(n)	(n)	(%)	(n)	(%)	
<b><u>Abertawe Bro Morgannwg University HB</u></b>	(n)	(n)	(%)	(n)	(%)	(n)	(%)	(n)	(n)	(n)	(%)	(n)	(%)	(n)	(n)	(n)	(%)	(n)	(%)	
Bridgend LA	434	396	91.2	370	85.3	9	2.1	200	183	91.5	172	86.0	234	213	91.0	198	84.6			
Neath Port Talbot LA	419	351	83.8	303	72.3	7	1.7	206	175	85.0	145	70.4	213	176	82.6	158	74.2			
Swansea LA	668	578	86.5	496	74.3	11	1.6	322	276	85.7	233	72.4	346	302	87.3	263	76.0			
<b>Health Board Total</b>	<b>1521</b>	<b>1325</b>	<b>87.1</b>	<b>1169</b>	<b>76.9</b>	<b>27</b>	<b>1.8</b>	<b>728</b>	<b>634</b>	<b>87.1</b>	<b>550</b>	<b>75.5</b>	<b>793</b>	<b>691</b>	<b>87.1</b>	<b>619</b>	<b>78.1</b>			
<b><u>Aneurin Bevan HB</u></b>																				
Blaenau Gwent LA	192	171	89.1	152	79.2	19	9.9	99	89	89.9	80	80.8	93	82	88.2	72	77.4			
Caerphilly LA	504	464	92.1	415	82.3	302	59.9	240	217	90.4	198	82.5	264	247	93.6	217	82.2			
Monmouthshire LA	242	221	91.3	192	79.3	127	52.5	114	102	89.5	88	77.2	128	119	93.0	104	81.3			
Newport LA	511	457	89.4	409	80.0	254	49.7	247	221	89.5	199	80.6	263	236	89.7	210	79.8			
Torfaen LA	282	261	92.6	233	82.6	138	48.9	148	136	91.9	120	81.1	134	125	93.3	113	84.3			
<b>Health Board Total</b>	<b>1731</b>	<b>1574</b>	<b>90.9</b>	<b>1401</b>	<b>80.9</b>	<b>840</b>	<b>48.5</b>	<b>848</b>	<b>765</b>	<b>90.2</b>	<b>685</b>	<b>80.8</b>	<b>882</b>	<b>809</b>	<b>91.7</b>	<b>716</b>	<b>81.2</b>			
<b><u>Betsi Cadwaladr University HB</u></b>																				
Anglesey LA	164	156	95.1	147	89.6	135	82.3	87	86	98.9	82	94.3	77	70	90.9	65	84.4			
Conwy LA	329	311	94.5	286	86.9	250	76.0	155	146	94.2	135	87.1	173	164	94.8	150	86.7			
Denbighshire LA	293	282	96.2	265	90.4	252	86.0	130	123	94.6	116	89.2	161	157	97.5	149	92.5			
Flintshire LA	412	393	95.4	362	87.9	321	77.9	214	207	96.7	191	89.3	198	186	93.9	171	86.4			
Gwynedd LA	302	286	94.7	271	89.7	241	79.8	144	138	95.8	130	90.3	158	148	93.7	141	89.2			
Wrexham LA	335	323	96.4	300	89.6	256	76.4	176	167	94.9	152	86.4	159	156	98.1	148	93.1			
<b>Health Board Total</b>	<b>1835</b>	<b>1751</b>	<b>95.4</b>	<b>1631</b>	<b>88.9</b>	<b>1455</b>	<b>79.3</b>	<b>906</b>	<b>867</b>	<b>95.7</b>	<b>806</b>	<b>89.0</b>	<b>926</b>	<b>881</b>	<b>95.1</b>	<b>824</b>	<b>89.0</b>			
<b><u>Cardiff and Vale University HB</u></b>																				
Cardiff LA	920	830	90.2	757	82.3	664	72.2	453	410	90.5	383	84.5	466	420	90.1	374	80.3			
Vale of Glamorgan LA	404	376	93.1	357	88.4	328	81.2	208	197	94.7	188	90.4	196	179	91.3	169	86.2			
<b>Health Board Total</b>	<b>1324</b>	<b>1206</b>	<b>91.1</b>	<b>1114</b>	<b>84.1</b>	<b>992</b>	<b>74.9</b>	<b>661</b>	<b>607</b>	<b>91.8</b>	<b>571</b>	<b>86.4</b>	<b>662</b>	<b>599</b>	<b>90.5</b>	<b>543</b>	<b>82.0</b>			
<b><u>Cwm Taf HB</u></b>																				
Merthyr Tydfil LA	177	159	89.8	141	79.7	4	2.3	86	75	87.2	64	74.4	91	84	92.3	77	84.6			
Rhondda Cynon Taff LA	667	617	92.5	548	82.2	9	1.3	328	300	91.5	270	82.3	339	317	93.5	278	82.0			
<b>Health Board Total</b>	<b>844</b>	<b>776</b>	<b>91.9</b>	<b>689</b>	<b>81.6</b>	<b>13</b>	<b>1.5</b>	<b>414</b>	<b>375</b>	<b>90.6</b>	<b>334</b>	<b>80.7</b>	<b>430</b>	<b>401</b>	<b>93.3</b>	<b>355</b>	<b>82.6</b>			
<b><u>Hywel Dda HB</u></b>																				
Carmarthenshire LA	484	432	89.3	391	80.8	199	41.1	242	218	90.1	200	82.6	242	214	88.4	191	78.9			
Ceredigion LA	165	151	91.5	134	81.2	6	3.6	76	68	89.5	62	81.6	89	83	93.3	72	80.9			
Pembrokeshire LA	306	272	88.9	248	81.0	65	21.2	133	119	89.5	111	83.5	173	153	88.4	137	79.2			
<b>Health Board Total</b>	<b>955</b>	<b>855</b>	<b>89.5</b>	<b>773</b>	<b>80.9</b>	<b>270</b>	<b>28.3</b>	<b>451</b>	<b>405</b>	<b>89.8</b>	<b>373</b>	<b>82.7</b>	<b>504</b>	<b>450</b>	<b>89.3</b>	<b>400</b>	<b>79.4</b>			
<b><u>Powys Teaching HB</u></b>	<b>358</b>	<b>306</b>	<b>85.5</b>	<b>277</b>	<b>77.4</b>	<b>12</b>	<b>3.4</b>	<b>160</b>	<b>139</b>	<b>86.9</b>	<b>125</b>	<b>78.1</b>	<b>198</b>	<b>167</b>	<b>84.3</b>	<b>152</b>	<b>76.8</b>			
Unknown	64	46	71.9	36	56.3	24	37.5	26	23	88.5	16	61.5	38	23	60.5	20	52.6			
<b>Wales Total</b>	<b>8632</b>	<b>7839</b>	<b>90.8</b>	<b>7090</b>	<b>82.1</b>	<b>3633</b>	<b>42.1</b>	<b>4194</b>	<b>3815</b>	<b>91.0</b>	<b>3460</b>	<b>82.5</b>	<b>4433</b>	<b>4021</b>	<b>90.7</b>	<b>3629</b>	<b>81.9</b>			

\* Teenage booster dose of diphtheria, tetanus and polio (diphtheria used as proxy)

**Table 7.** MMR and Td/IPV vaccine uptake in children reaching their 16th birthday between 01/10/12 and 31/12/12 and resident on 31/12/12 (with breakdown of MMR1 and MMR2 coverage by sex).

Area	Resident children		MMR1		MMR2		Teenage 3 in 1 booster*		Resident girls	MMR1 (girls)		MMR2 (girls)		Resident boys	MMR1 (boys)		MMR2 (boys)	
	(n)	(n)	(%)	(n)	(%)	(n)	(%)	(n)		(n)	(%)	(n)	(%)		(n)	(n)	(%)	(n)
<b><u>Abertawe Bro Morgannwg University HB</u></b>	(n)	(n)	(%)	(n)	(%)	(n)	(%)	(n)	(n)	(%)	(n)	(%)	(n)	(n)	(%)	(n)	(%)	
Bridgend LA	460	426	92.6	398	86.5	385	83.7	209	194	92.8	182	87.1	251	232	92.4	216	86.1	
Neath Port Talbot LA	421	376	89.3	337	80.0	337	80.0	202	176	87.1	162	80.2	219	200	91.3	175	79.9	
Swansea LA	706	631	89.4	552	78.2	591	83.7	328	295	89.9	254	77.4	378	336	88.9	298	78.8	
<b>Health Board Total</b>	<b>1587</b>	<b>1433</b>	<b>90.3</b>	<b>1287</b>	<b>81.1</b>	<b>1313</b>	<b>82.7</b>	<b>739</b>	<b>665</b>	<b>90.0</b>	<b>598</b>	<b>80.9</b>	<b>848</b>	<b>768</b>	<b>90.6</b>	<b>689</b>	<b>81.3</b>	
<b><u>Aneurin Bevan HB</u></b>																		
Blaenau Gwent LA	211	190	90.0	168	79.6	174	82.5	113	98	86.7	88	77.9	98	92	93.9	80	81.6	
Caerphilly LA	525	468	89.1	407	77.5	432	82.3	241	219	90.9	188	78.0	284	249	87.7	219	77.1	
Monmouthshire LA	315	264	83.8	224	71.1	251	79.7	145	126	86.9	104	71.7	170	138	81.2	120	70.6	
Newport LA	515	455	88.3	402	78.1	382	74.2	233	203	87.1	179	76.8	282	252	89.4	223	79.1	
Torfaen LA	309	289	93.5	265	85.8	240	77.7	144	131	91.0	121	84.0	165	158	95.8	144	87.3	
<b>Health Board Total</b>	<b>1875</b>	<b>1666</b>	<b>88.9</b>	<b>1466</b>	<b>78.2</b>	<b>1479</b>	<b>78.9</b>	<b>876</b>	<b>777</b>	<b>88.7</b>	<b>680</b>	<b>77.6</b>	<b>999</b>	<b>889</b>	<b>89.0</b>	<b>786</b>	<b>78.7</b>	
<b><u>Betsi Cadwaladr University HB</u></b>																		
Anglesey LA	193	181	93.8	171	88.6	145	75.1	82	75	91.5	70	85.4	111	106	95.5	101	91.0	
Conwy LA	320	306	95.6	296	92.5	269	84.1	157	151	96.2	146	93.0	163	155	95.1	150	92.0	
Denbighshire LA	316	302	95.6	268	84.8	256	81.0	163	156	95.7	137	84.0	153	146	95.4	131	85.6	
Flintshire LA	422	409	96.9	389	92.2	342	81.0	215	207	96.3	197	91.6	207	202	97.6	192	92.8	
Gwynedd LA	388	361	93.0	348	89.7	300	77.3	185	173	93.5	167	90.3	203	188	92.6	181	89.2	
Wrexham LA	355	345	97.2	329	92.7	274	77.2	173	167	96.5	155	89.6	182	178	97.8	174	95.6	
<b>Health Board Total</b>	<b>1994</b>	<b>1904</b>	<b>95.5</b>	<b>1801</b>	<b>90.3</b>	<b>1586</b>	<b>79.5</b>	<b>975</b>	<b>929</b>	<b>95.3</b>	<b>872</b>	<b>89.4</b>	<b>1019</b>	<b>975</b>	<b>95.7</b>	<b>929</b>	<b>91.2</b>	
<b><u>Cardiff and Vale University HB</u></b>																		
Cardiff LA	933	843	90.4	756	81.0	665	71.3	442	407	92.1	369	83.5	491	436	88.8	387	78.8	
Vale of Glamorgan LA	412	374	90.8	352	85.4	330	80.1	229	211	92.1	200	87.3	183	163	89.1	152	83.1	
<b>Health Board Total</b>	<b>1345</b>	<b>1217</b>	<b>90.5</b>	<b>1108</b>	<b>82.4</b>	<b>995</b>	<b>74.0</b>	<b>671</b>	<b>618</b>	<b>92.1</b>	<b>569</b>	<b>84.8</b>	<b>674</b>	<b>599</b>	<b>88.9</b>	<b>539</b>	<b>80.0</b>	
<b><u>Cwm Taf HB</u></b>																		
Merthyr Tydfil LA	194	174	89.7	154	79.4	133	68.6	102	91	89.2	80	78.4	92	83	90.2	74	80.4	
Rhondda Cynon Taff LA	705	662	93.9	596	84.5	569	80.7	342	320	93.6	290	84.8	363	342	94.2	306	84.3	
<b>Health Board Total</b>	<b>899</b>	<b>836</b>	<b>93.0</b>	<b>750</b>	<b>83.4</b>	<b>702</b>	<b>78.1</b>	<b>444</b>	<b>411</b>	<b>92.6</b>	<b>370</b>	<b>83.3</b>	<b>455</b>	<b>425</b>	<b>93.4</b>	<b>380</b>	<b>83.5</b>	
<b><u>Hywel Dda HB</u></b>																		
Carmarthenshire LA	523	469	89.7	411	78.6	410	78.4	259	236	91.1	203	78.4	264	233	88.3	208	78.8	
Ceredigion LA	159	150	94.3	139	87.4	138	86.8	80	78	97.5	72	90.0	79	72	91.1	67	84.8	
Pembrokeshire LA	367	326	88.8	285	77.7	111	30.2	187	168	89.8	147	78.6	180	158	87.8	138	76.7	
<b>Health Board Total</b>	<b>1049</b>	<b>945</b>	<b>90.1</b>	<b>835</b>	<b>79.6</b>	<b>659</b>	<b>62.8</b>	<b>526</b>	<b>482</b>	<b>91.6</b>	<b>422</b>	<b>80.2</b>	<b>523</b>	<b>463</b>	<b>88.5</b>	<b>413</b>	<b>79.0</b>	
<b><u>Powys Teaching HB</u></b>	<b>358</b>	<b>301</b>	<b>84.1</b>	<b>266</b>	<b>74.3</b>	<b>273</b>	<b>76.3</b>	<b>169</b>	<b>138</b>	<b>81.7</b>	<b>124</b>	<b>73.4</b>	<b>189</b>	<b>163</b>	<b>86.2</b>	<b>142</b>	<b>75.1</b>	
Unknown	70	51	72.9	46	65.7	45	64.3	34	24	70.6	23	67.6	36	27	75.0	23	63.9	
<b>Wales Total</b>	<b>9177</b>	<b>8353</b>	<b>91.0</b>	<b>7559</b>	<b>82.4</b>	<b>7052</b>	<b>76.8</b>	<b>4434</b>	<b>4044</b>	<b>91.2</b>	<b>3658</b>	<b>82.5</b>	<b>4743</b>	<b>4309</b>	<b>90.8</b>	<b>3901</b>	<b>82.2</b>	

\* Teenage booster dose of diphtheria, tetanus and polio (diphtheria used as proxy).

**Table 8.** Uptake of HPV vaccine in girls reaching appropriate birthdays between 01/09/12 and 31/08/13 and resident in Wales on 31/12/12.

Area	15 years							16 years							17 years						
	Resident girls	1 dose	2 doses	3 doses	Resident girls	1 dose	2 doses	3 doses	Resident girls	1 dose	2 doses	3 doses	Resident girls	1 dose	2 doses	3 doses					
	(n)	(n)	(%)	(n)	(%)	(n)	(%)	(n)	(n)	(%)	(n)	(%)	(n)	(n)	(%)	(n)	(%)				
<b>ABM ULHB</b>																					
Bridgend LA	797	736	92.3	731	91.7	719	90.2	835	760	91.0	755	90.4	744	89.1	707	638	90.2	636	90.0	630	89.1
Neath Port Talbot LA	787	740	94.0	733	93.1	718	91.2	811	722	89.0	710	87.5	690	85.1	775	718	92.6	711	91.7	705	91.0
Swansea LA	1254	1130	90.1	1118	89.2	1099	87.6	1255	1080	86.1	1070	85.3	1053	83.9	1259	1167	92.7	1163	92.4	1153	91.6
<b>Health Board Total</b>	<b>2838</b>	<b>2606</b>	<b>91.8</b>	<b>2582</b>	<b>91.0</b>	<b>2536</b>	<b>89.4</b>	<b>2901</b>	<b>2562</b>	<b>88.3</b>	<b>2535</b>	<b>87.4</b>	<b>2487</b>	<b>85.7</b>	<b>2741</b>	<b>2523</b>	<b>92.0</b>	<b>2510</b>	<b>91.6</b>	<b>2488</b>	<b>90.8</b>
<b>Aneurin Bevan LHB</b>																					
Blaenau Gwent LA	400	364	91.0	359	89.8	354	88.5	395	372	94.2	367	92.9	361	91.4	409	394	96.3	393	96.1	383	93.6
Caerphilly LA	1037	935	90.2	921	88.8	902	87.0	1083	961	88.7	953	88.0	932	86.1	1037	957	92.3	951	91.7	935	90.2
Monmouthshire LA	506	383	75.7	378	74.7	372	73.5	590	451	76.4	443	75.1	438	74.2	547	417	76.2	414	75.7	337	61.6
Newport LA	986	846	85.8	835	84.7	822	83.4	942	779	82.7	776	82.4	762	80.9	916	777	84.8	771	84.2	732	79.9
Torfaen LA	572	516	90.2	517	90.4	512	89.5	607	550	90.6	549	90.4	542	89.3	556	521	93.7	519	93.3	510	91.7
<b>Health Board Total</b>	<b>3501</b>	<b>3044</b>	<b>86.9</b>	<b>3010</b>	<b>86.0</b>	<b>2962</b>	<b>84.6</b>	<b>3617</b>	<b>3113</b>	<b>86.1</b>	<b>3088</b>	<b>85.4</b>	<b>3035</b>	<b>83.9</b>	<b>3465</b>	<b>3066</b>	<b>88.5</b>	<b>3048</b>	<b>88.0</b>	<b>2897</b>	<b>83.6</b>
<b>Betsi Cadwaladr ULHB</b>																					
Anglesey LA	364	341	93.7	339	93.1	336	92.3	399	341	85.5	337	84.5	329	82.5	386	344	89.1	341	88.3	332	86.0
Conwy LA	605	559	92.4	557	92.1	537	88.8	593	524	88.4	521	87.9	504	85.0	598	534	89.3	533	89.1	530	88.6
Denbighshire LA	525	476	90.7	472	89.9	461	87.8	585	510	87.2	508	86.8	491	83.9	509	477	93.7	470	92.3	463	91.0
Flintshire LA	834	759	91.0	753	90.3	742	89.0	883	791	89.6	785	88.9	781	88.4	869	823	94.7	822	94.6	811	93.3
Gwynedd LA	603	535	88.7	533	88.4	530	87.9	681	576	84.6	570	83.7	562	82.5	626	543	86.7	540	86.3	527	84.2
Wrexham LA	718	650	90.5	646	90.0	640	89.1	659	578	87.7	574	87.1	570	86.5	722	682	94.5	676	93.6	670	92.8
<b>Health Board Total</b>	<b>3649</b>	<b>3320</b>	<b>91.0</b>	<b>3300</b>	<b>90.4</b>	<b>3246</b>	<b>89.0</b>	<b>3800</b>	<b>3320</b>	<b>87.4</b>	<b>3295</b>	<b>86.7</b>	<b>3237</b>	<b>85.2</b>	<b>3710</b>	<b>3403</b>	<b>91.7</b>	<b>3382</b>	<b>91.2</b>	<b>3333</b>	<b>89.8</b>
<b>Cardiff &amp; Vale ULHB</b>																					
Cardiff LA	1843	1617	87.7	1592	86.4	1519	82.4	1791	1529	85.4	1484	82.9	1425	79.6	1885	1630	86.5	1609	85.4	1552	82.3
Vale of Glamorgan LA	742	670	90.3	656	88.4	620	83.6	830	724	87.2	702	84.6	672	81.0	784	695	88.6	690	88.0	659	84.1
<b>Health Board Total</b>	<b>2585</b>	<b>2287</b>	<b>88.5</b>	<b>2248</b>	<b>87.0</b>	<b>2139</b>	<b>82.7</b>	<b>2621</b>	<b>2253</b>	<b>86.0</b>	<b>2186</b>	<b>83.4</b>	<b>2097</b>	<b>80.0</b>	<b>2669</b>	<b>2325</b>	<b>87.1</b>	<b>2299</b>	<b>86.1</b>	<b>2211</b>	<b>82.8</b>
<b>Cwm Taf LHB</b>																					
Merthyr Tydfil LA	329	300	91.2	297	90.3	293	89.1	382	345	90.3	341	89.3	325	85.1	359	340	94.7	338	94.2	333	92.8
Rhondda Cynon Taff LA	1296	1209	93.3	1189	91.7	1163	89.7	1321	1218	92.2	1207	91.4	1192	90.2	1287	1203	93.5	1197	93.0	1188	92.3
<b>Health Board Total</b>	<b>1625</b>	<b>1509</b>	<b>92.9</b>	<b>1486</b>	<b>91.4</b>	<b>1456</b>	<b>89.6</b>	<b>1703</b>	<b>1563</b>	<b>91.8</b>	<b>1548</b>	<b>90.9</b>	<b>1517</b>	<b>89.1</b>	<b>1646</b>	<b>1543</b>	<b>93.7</b>	<b>1535</b>	<b>93.3</b>	<b>1521</b>	<b>92.4</b>
<b>Hywel Dda LHB</b>																					
Carmarthenshire LA	940	836	88.9	834	88.7	822	87.4	992	835	84.2	824	83.1	816	82.3	1000	906	90.6	903	90.3	884	88.4
Ceredigion LA	340	289	85.0	287	84.4	279	82.1	341	271	79.5	269	78.9	266	78.0	302	250	82.8	249	82.5	247	81.8
Pembrokeshire LA	652	568	87.1	564	86.5	549	84.2	661	564	85.3	557	84.3	541	81.8	663	584	88.1	579	87.3	573	86.4
<b>Health Board Total</b>	<b>1932</b>	<b>1693</b>	<b>87.6</b>	<b>1685</b>	<b>87.2</b>	<b>1650</b>	<b>85.4</b>	<b>1994</b>	<b>1670</b>	<b>83.8</b>	<b>1650</b>	<b>82.7</b>	<b>1623</b>	<b>81.4</b>	<b>1965</b>	<b>1740</b>	<b>88.5</b>	<b>1731</b>	<b>88.1</b>	<b>1704</b>	<b>86.7</b>
<b>Powys Teaching LHB</b>	<b>690</b>	<b>577</b>	<b>83.6</b>	<b>573</b>	<b>83.0</b>	<b>564</b>	<b>81.7</b>	<b>735</b>	<b>594</b>	<b>80.8</b>	<b>589</b>	<b>80.1</b>	<b>583</b>	<b>79.3</b>	<b>687</b>	<b>602</b>	<b>87.6</b>	<b>600</b>	<b>87.3</b>	<b>593</b>	<b>86.3</b>
Unknown	101	69	68.3	67	66.3	68	67.3	126	75	59.5	74	58.7	71	56.3	128	88	68.8	88	68.8	85	66.4
<b>Wales Total</b>	<b>16921</b>	<b>15105</b>	<b>89.3</b>	<b>14951</b>	<b>88.4</b>	<b>14621</b>	<b>86.4</b>	<b>17497</b>	<b>15150</b>	<b>86.6</b>	<b>14965</b>	<b>85.5</b>	<b>14650</b>	<b>83.7</b>	<b>17011</b>	<b>15290</b>	<b>89.9</b>	<b>15193</b>	<b>89.3</b>	<b>14832</b>	<b>87.2</b>

**Table 9.** Uptake of BCG immunisation in children reaching their 1<sup>st</sup>, 2<sup>nd</sup>, 5<sup>th</sup> and 16<sup>th</sup> birthdays between 01/10/12 and 31/12/12 and resident on 31/12/12.

Area	1 yr			2 yrs			5 yrs			16 yrs		
	Resident children (n)	BCG Immunised (n)	(%)	Resident children (n)	BCG Immunised (n)	(%)	Resident children (n)	BCG Immunised (n)	(%)	Resident children (n)	BCG Immunised (n)	(%)
<b>Abertawe Bro Morgannwg University</b>												
Bridgend LA	459	19	4.1	418	11	2.6	348	6	1.7	460	3	0.7
Neath Port Talbot LA	405	14	3.5	402	11	2.7	363	8	2.2	421	4	1.0
Swansea LA	683	69	10.1	726	73	10.1	639	69	10.8	706	15	2.1
<b>Health Board Total</b>	<b>1547</b>	<b>102</b>	<b>6.6</b>	<b>1546</b>	<b>95</b>	<b>6.1</b>	<b>1350</b>	<b>83</b>	<b>6.1</b>	<b>1587</b>	<b>22</b>	<b>1.4</b>
<b>Aneurin Bevan</b>												
Blaenau Gwent LA	207	8	3.9	196	5	2.6	164	5	3.0	211	2	0.9
Caerphilly LA	532	8	1.5	586	9	1.5	545	9	1.7	525	3	0.6
Monmouthshire LA	208	2	1.0	233	11	4.7	211	13	6.2	315	2	0.6
Newport LA	491	83	16.9	525	86	16.4	483	83	17.2	515	12	2.3
Torfaen LA	262	4	1.5	261	6	2.3	274	4	1.5	309	1	0.3
<b>Health Board Total</b>	<b>1700</b>	<b>105</b>	<b>6.2</b>	<b>1801</b>	<b>117</b>	<b>6.5</b>	<b>1677</b>	<b>114</b>	<b>6.8</b>	<b>1875</b>	<b>20</b>	<b>1.1</b>
<b>Betsi Cadwalladr University</b>												
Anglesey LA	181	1	0.6	221	3	1.4	192	3	1.6	193	2	1.0
Conwy LA	279	8	2.9	265	9	3.4	277	12	4.3	320	8	2.5
Denbighshire LA	277	7	2.5	278	9	3.2	277	14	5.1	316	11	3.5
Flintshire LA	436	12	2.8	434	21	4.8	433	11	2.5	422	9	2.1
Gwynedd LA	338	14	4.1	300	15	5.0	321	13	4.0	388	6	1.5
Wrexham LA	408	27	6.6	452	25	5.5	397	23	5.8	355	21	5.9
<b>Health Board Total</b>	<b>1919</b>	<b>69</b>	<b>3.6</b>	<b>1950</b>	<b>82</b>	<b>4.2</b>	<b>1897</b>	<b>76</b>	<b>4.0</b>	<b>1994</b>	<b>57</b>	<b>2.9</b>
<b>Cardiff and Vale University</b>												
Cardiff LA	1259	245	19.5	1197	214	17.9	1079	219	20.3	933	105	11.3
Vale of Glamorgan LA	380	19	5.0	313	17	5.4	373	17	4.6	412	14	3.4
<b>Health Board Total</b>	<b>1639</b>	<b>264</b>	<b>16.1</b>	<b>1510</b>	<b>231</b>	<b>15.3</b>	<b>1452</b>	<b>236</b>	<b>16.3</b>	<b>1345</b>	<b>119</b>	<b>8.8</b>
<b>Cwm Taf</b>												
Merthyr Tydfil LA	210	22	10.5	187	11	5.9	193	8	4.1	194	3	1.5
Rhondda Cynon Taff LA	731	29	4.0	765	23	3.0	673	20	3.0	705	9	1.3
<b>Health Board Total</b>	<b>941</b>	<b>51</b>	<b>5.4</b>	<b>952</b>	<b>34</b>	<b>3.6</b>	<b>866</b>	<b>28</b>	<b>3.2</b>	<b>899</b>	<b>12</b>	<b>1.3</b>
<b>Hywel Dda</b>												
Cardiff LA	493	19	3.9	535	21	3.9	516	16	3.1	523	4	0.8
Ceredigion LA	146	10	6.8	189	11	5.8	158	11	7.0	159	9	5.7
Pembrokeshire LA	322	10	3.1	346	4	1.2	326	18	5.5	367	5	1.4
<b>Health Board Total</b>	<b>961</b>	<b>39</b>	<b>4.1</b>	<b>1070</b>	<b>36</b>	<b>3.4</b>	<b>1000</b>	<b>45</b>	<b>4.5</b>	<b>1049</b>	<b>18</b>	<b>1.7</b>
<b>Powys Teaching Health Board</b>	<b>308</b>	<b>4</b>	<b>1.3</b>	<b>333</b>	<b>10</b>	<b>3.0</b>	<b>317</b>	<b>3</b>	<b>0.9</b>	<b>358</b>	<b>6</b>	<b>1.7</b>
Unknown	27	0	0.0	29	0	0.0	44	0	0.0	70	1	1.4
<b>Wales Total</b>	<b>9042</b>	<b>634</b>	<b>7.0</b>	<b>9191</b>	<b>605</b>	<b>6.6</b>	<b>8603</b>	<b>585</b>	<b>6.8</b>	<b>9177</b>	<b>255</b>	<b>2.8</b>

Data reflects immunisations given and recorded on the NCCHD (following notifications to local Child Health Administration Offices), may be subject to under-reporting. BCG is not a routinely scheduled immunisation.

**Table 10.** Uptake of hepatitis B immunisation in children receiving their first dose within seven days of birth, reaching their 1<sup>st</sup>, 2<sup>nd</sup>, 5<sup>th</sup> and 16<sup>th</sup> birthdays during 01/10/12 and 31/12/12 and resident on 31/12/12, and percentage who are recorded as completing doses 1 to 3.

Area	1yr					2yrs					5yrs					16yrs				
	Resident children	HepB dose 1	HepB dose 2	HepB dose 3	Completed 3 doses	Resident children	HepB dose 1	HepB dose 2	HepB dose 3	Completed 3 doses	Resident children	HepB dose 1	HepB dose 2	HepB dose 3	Completed 3 doses	Resident children	HepB dose 1	HepB dose 2	HepB dose 3	Completed 3 doses
<b>Abertawe Bro Morgannwg University</b>	(n)	(n)	(n)	(n)	(%)	(n)	(n)	(n)	(n)	(%)	(n)	(n)	(n)	(n)	(%)	(n)	(n)	(n)	(n)	(%)
Bridgend LA	459	3	2	1	33.3	418	1	1	1	100.0	348	0	0	0	-	460	1	1	1	100.0
Neath Port Talbot LA	405	3	3	3	100.0	402	2	2	2	100.0	363	3	3	2	66.7	421	1	1	1	100.0
Swansea LA	683	8	7	5	62.5	726	4	3	3	75.0	639	16	13	13	81.3	706	1	1	1	100.0
<b>Health Board Total</b>	<b>1547</b>	<b>14</b>	<b>12</b>	<b>9</b>	<b>64.3</b>	<b>1546</b>	<b>7</b>	<b>6</b>	<b>6</b>	<b>85.7</b>	<b>1350</b>	<b>19</b>	<b>16</b>	<b>15</b>	<b>78.9</b>	<b>1587</b>	<b>3</b>	<b>3</b>	<b>3</b>	<b>100.0</b>
<b>Aneurin Bevan</b>																				
Blaenau Gwent LA	207	2	2	2	100.0	196	1	1	1	100.0	164	1	1	1	100.0	211	1	1	1	100.0
Caerphilly LA	532	4	3	3	75.0	586	2	2	1	50.0	545	3	3	2	66.7	525	0	0	0	-
Monmouthshire LA	208	1	1	1	100.0	233	0	0	0	-	211	4	4	3	75.0	315	1	1	1	100.0
Newport LA	491	7	7	7	100.0	525	10	10	10	100.0	483	6	6	6	100.0	515	0	0	0	-
Torfaen LA	262	0	0	0	-	261	0	0	0	-	274	2	2	2	100.0	309	0	0	0	-
<b>Health Board Total</b>	<b>1700</b>	<b>14</b>	<b>13</b>	<b>13</b>	<b>92.9</b>	<b>1801</b>	<b>13</b>	<b>13</b>	<b>12</b>	<b>92.3</b>	<b>1677</b>	<b>16</b>	<b>16</b>	<b>14</b>	<b>87.5</b>	<b>1875</b>	<b>2</b>	<b>2</b>	<b>2</b>	<b>100.0</b>
<b>Betsi Cadwalladr University</b>																				
Anglesey LA	181	0	0	0	-	221	0	0	0	-	192	0	0	0	-	193	0	0	0	-
Conwy LA	279	1	1	0	0.0	265	2	2	2	100.0	277	0	0	0	-	320	1	1	1	100.0
Denbighshire LA	277	0	0	0	-	278	1	0	0	0.0	277	0	0	0	-	316	0	0	0	-
Flintshire LA	436	4	4	3	75.0	434	1	1	1	100.0	433	0	0	0	-	422	0	0	0	-
Gwynedd LA	338	0	0	0	-	300	4	4	1	25.0	321	5	4	4	80.0	388	0	0	0	-
Wrexham LA	408	1	1	1	100.0	452	4	3	3	75.0	397	5	5	5	100.0	355	1	1	1	100.0
<b>Health Board Total</b>	<b>1919</b>	<b>6</b>	<b>6</b>	<b>4</b>	<b>66.7</b>	<b>1950</b>	<b>12</b>	<b>10</b>	<b>7</b>	<b>58.3</b>	<b>1897</b>	<b>10</b>	<b>9</b>	<b>9</b>	<b>90.0</b>	<b>1994</b>	<b>2</b>	<b>2</b>	<b>2</b>	<b>100.0</b>
<b>Cardiff and Vale University</b>																				
Cardiff LA	1259	17	16	14	82.4	1197	14	10	6	42.9	1079	14	14	13	92.9	933	8	8	8	100.0
Vale of Glamorgan LA	380	1	1	1	100.0	313	0	0	0	-	373	1	1	1	100.0	412	2	2	2	100.0
<b>Health Board Total</b>	<b>1639</b>	<b>18</b>	<b>17</b>	<b>15</b>	<b>83.3</b>	<b>1510</b>	<b>14</b>	<b>10</b>	<b>6</b>	<b>42.9</b>	<b>1452</b>	<b>15</b>	<b>15</b>	<b>14</b>	<b>93.3</b>	<b>1345</b>	<b>10</b>	<b>10</b>	<b>10</b>	<b>100.0</b>
<b>Cwm Taf</b>																				
Merthyr Tydfil LA	210	0	0	0	-	187	1	1	0	0.0	193	3	3	2	66.7	194	0	0	0	-
Rhondda Cynon Taff LA	731	0	0	0	-	765	1	0	0	0.0	673	5	5	4	80.0	705	0	0	0	-
<b>Health Board Total</b>	<b>941</b>	<b>0</b>	<b>0</b>	<b>0</b>	<b>-</b>	<b>952</b>	<b>2</b>	<b>1</b>	<b>0</b>	<b>0.0</b>	<b>866</b>	<b>8</b>	<b>8</b>	<b>6</b>	<b>75.0</b>	<b>899</b>	<b>0</b>	<b>0</b>	<b>0</b>	<b>-</b>
<b>Hywel Dda</b>																				
Carmarthenshire LA	493	3	2	0	0.0	535	3	2	1	33.3	516	6	6	4	66.7	523	1	1	1	100.0
Ceredigion LA	146	0	0	0	-	189	1	1	1	100.0	158	1	1	1	100.0	159	0	0	0	-
Pembrokeshire LA	322	0	0	0	-	346	2	2	2	100.0	326	4	4	4	100.0	367	0	0	0	-
<b>Health Board Total</b>	<b>961</b>	<b>3</b>	<b>2</b>	<b>0</b>	<b>0.0</b>	<b>1070</b>	<b>6</b>	<b>5</b>	<b>4</b>	<b>66.7</b>	<b>1000</b>	<b>11</b>	<b>11</b>	<b>9</b>	<b>81.8</b>	<b>1049</b>	<b>1</b>	<b>1</b>	<b>1</b>	<b>100.0</b>
<b>Powys Teaching Health Board</b>	<b>308</b>	<b>0</b>	<b>0</b>	<b>0</b>	<b>-</b>	<b>333</b>	<b>2</b>	<b>2</b>	<b>2</b>	<b>100.0</b>	<b>317</b>	<b>0</b>	<b>0</b>	<b>0</b>	<b>-</b>	<b>358</b>	<b>3</b>	<b>2</b>	<b>2</b>	<b>66.7</b>
Unknown	27	0	0	0	-	29	0	0	0	-	44	0	0	0	-	70	0	0	0	-
<b>Wales Total</b>	<b>9042</b>	<b>55</b>	<b>50</b>	<b>41</b>	<b>74.5</b>	<b>9191</b>	<b>56</b>	<b>47</b>	<b>37</b>	<b>66.1</b>	<b>8603</b>	<b>79</b>	<b>75</b>	<b>67</b>	<b>84.8</b>	<b>9177</b>	<b>21</b>	<b>20</b>	<b>20</b>	<b>95.2</b>

Data reflects immunisations given and recorded on the NCCHD (following notifications to local Child Health Administration Offices), may be subject to under-reporting. Hepatitis B is not a routinely scheduled immunisation. Only children who receive the first dose of hepatitis B vaccine within seven days of birth (suggesting high risk status) are included in this table