



GIG  
CYMRU  
NHS  
WALES

Iechyd Cyhoeddus  
Cymru  
Public Health  
Wales

# Weekly Acute Respiratory Infection Report

Public Health Wales

Communicable Disease Surveillance Centre

Report week: 34 (ending 24 August 2025)

## Headline

- Influenza circulation remains at baseline levels. GP consultations for influenza-like illness and confirmed case numbers have decreased in the current week, as has test positivity.
- Respiratory Syncytial Virus (RSV) is at baseline levels.
- COVID-19 case numbers have remained broadly stable in recent weeks.
- GP consultations for acute respiratory infections increased compared to the previous week.
- According to EuroMoMo method, 'no excess' all-cause mortality has been reported so far this season.
- **Due to bank the bank holiday weekend, mortality data was not available at the time of publication.**
- **Please note, the weekly report will move to a fortnightly reporting schedule from 4th June, until September.**

## Foreword

This report replaces the previously separate weekly reports on COVID-19, influenza and other respiratory infections. It is published on a weekly basis between week 40 (October) and 20 (May) of the following year, and on a fortnightly basis during the summer period.

This report summarises the latest available information from several Public Health Wales surveillance schemes, reports on Acute Respiratory Infections (ARI) and information from other sources.

Additional information is available from the links below.

- [Weekly ARI Hospital Admissions Dashboard](#)
- [EuroMOMO European mortality monitoring](#)
- [Public Health Wales Respiratory Infection Mortality updates](#)
- [COVID-19 variant summary](#)

The structure of this report is based on the surveillance pyramid (from mild to severe infection outcomes), illustrated below. Icons alongside chapter headings indicate the types of information included in the chapter.



## Table of Contents

Headline .....	0
Foreword .....	2
High Level Summary Points.....	4
1. Community surveillance indicators.....	5
2. Virological Surveillance .....	9
3. Severe Acute Respiratory Infection (SARI) and surveillance in hospitals.....	12
4. Settings-based surveillance and outbreaks.....	17
5. Mortality surveillance .....	19
6. Pathogen-specific surveillance .....	22
7. International Summary.....	25
8. Notes on interpretation.....	27
9. Statement of voluntary application of the Code of Practice for Statistics.....	28
10. Links to surveillance reports from other countries .....	29

## High Level Summary Points

	Community infection indicators	Severe infection indicators
<b>Overall Acute Respiratory Infection (ARI)</b>	<p>The 3-week trend in consultation rate per 100,000 for broader acute respiratory infection (ARI) is variable.</p> <p>Consultations with Sentinel GPs for acute respiratory infection (ARI) decreased compared to last week.</p>	Admissions in patients testing positive for influenza, COVID-19 or RSV decreased in Week 34 (1% of total admissions).
<b>Influenza</b>	<p><b>Influenza activity is at <u>baseline</u> levels and case numbers remain broadly stable.</b></p> <p>The overall proportion of samples testing positive remained stable in the most recent week at 0.7%.</p> <p>Consultations for influenza-like illness (ILI) with sentinel GPs decreased and remained at baseline intensity. No cases of influenza were confirmed from symptomatic sentinel GP network patients across Wales last week.</p>	<p>The number of confirmed cases of community acquired influenza admitted to hospital decreased to 0 during Week 34.</p> <p>During Week 34, there were four in-patient cases of confirmed influenza, none of which was in critical care.</p>
<b>Influenza type breakdown</b>	<p><b>Since 2024 Week 40:</b> 8,709 total influenza cases confirmed (511 influenza A(H3N2), 1,667 influenza A(H1N1)pdm09, 5,104 influenza A untyped and 1,427 influenza B).</p> <p><b>In the most recent week:</b> Three influenza A(H3), two influenza A(H1N1), three influenza A untyped and one influenza B.</p>	
<b>COVID-19</b>	<p>The overall proportion of samples testing positive increased to 10.8 % in hospital and non-sentinel GP practices.</p> <p>Confirmed cases of COVID-19 in symptomatic patients attending sentinel GPs remained stable in the most recent week.</p>	<p>The number of confirmed cases of community acquired COVID-19 admitted to hospital decreased to 29 during Week 34.</p> <p>During Week 34 there were 178 in-patient cases of confirmed COVID-19, none of whom were in critical care.</p>
<b>RSV</b>	<p>RSV incidence in children aged up to 5y is currently at baseline levels.</p> <p>Incidence per 100,000 population in children aged up to 5y remained stable at 0.0 in the most recent week.</p>	<p>The number of confirmed cases of community acquired RSV admitted to hospital remained stable at one during Week 34.</p> <p>During Week 34 there were two in-patient cases of confirmed RSV, and none in critical care.</p>
<b>Other respiratory pathogens</b>	Rhinovirus remains the most prevalent detected pathogen in both sentinel and non-sentinel networks. While most pathogens are either stable or decreasing, test positivity for adenovirus and C. pneumoniae has increased in sentinel GP practices	



## 1. Community surveillance indicators

### GP Consultations

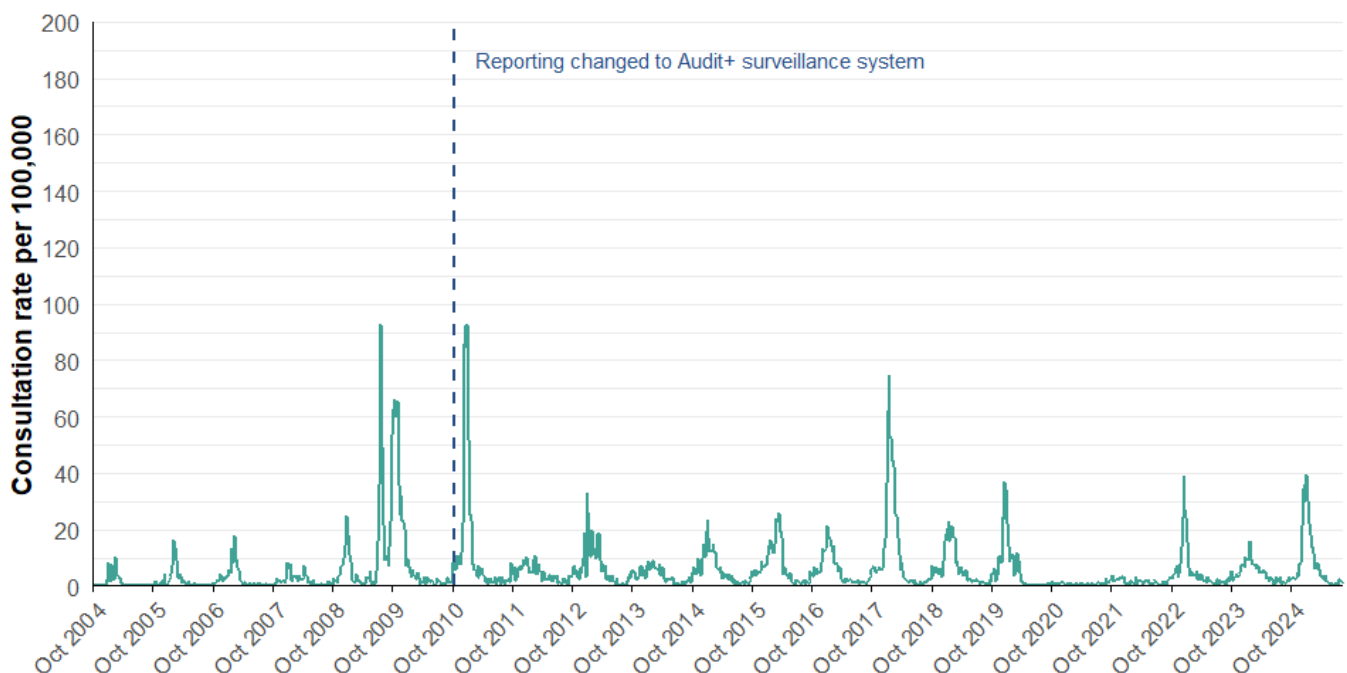
- The sentinel GP consultation rate for influenza-like illness (ILI) is at baseline and the three-week trend is variable (Figures 1.1, 1.2).
- There were 0.6 ILI consultations per 100,000 practice population in the most recent week, a decrease compared to the previous week (1.7 consultations per 100,000).
- In the most recent week, using all available data from general practices, there were 8.8 ARI consultations per 100,000 practice population, a decrease from 10 in the previous week (Table 1.2). The highest rates were found in people aged under 1 year (269.1) followed by people aged 1 to 4 (234.1) and people aged 75+ (133.4) (Figure 1.4).
- Surveillance indicators for acute respiratory infections in GP consultation data in Wales are decreasing in people aged under 5 years (Figure 1.4).

### Ambulance Calls

- The number of ambulance calls recorded referring to syndromic indicators decreased from 1,617 in the previous week to 1,579 in the latest reporting week (Figure 1.5, Table 1.3).
- Calls for cardiac or respiratory arrest, chest pain, difficulty breathing were stable or decreased compared to the previous week (Figure 1.5, Table 1.3).

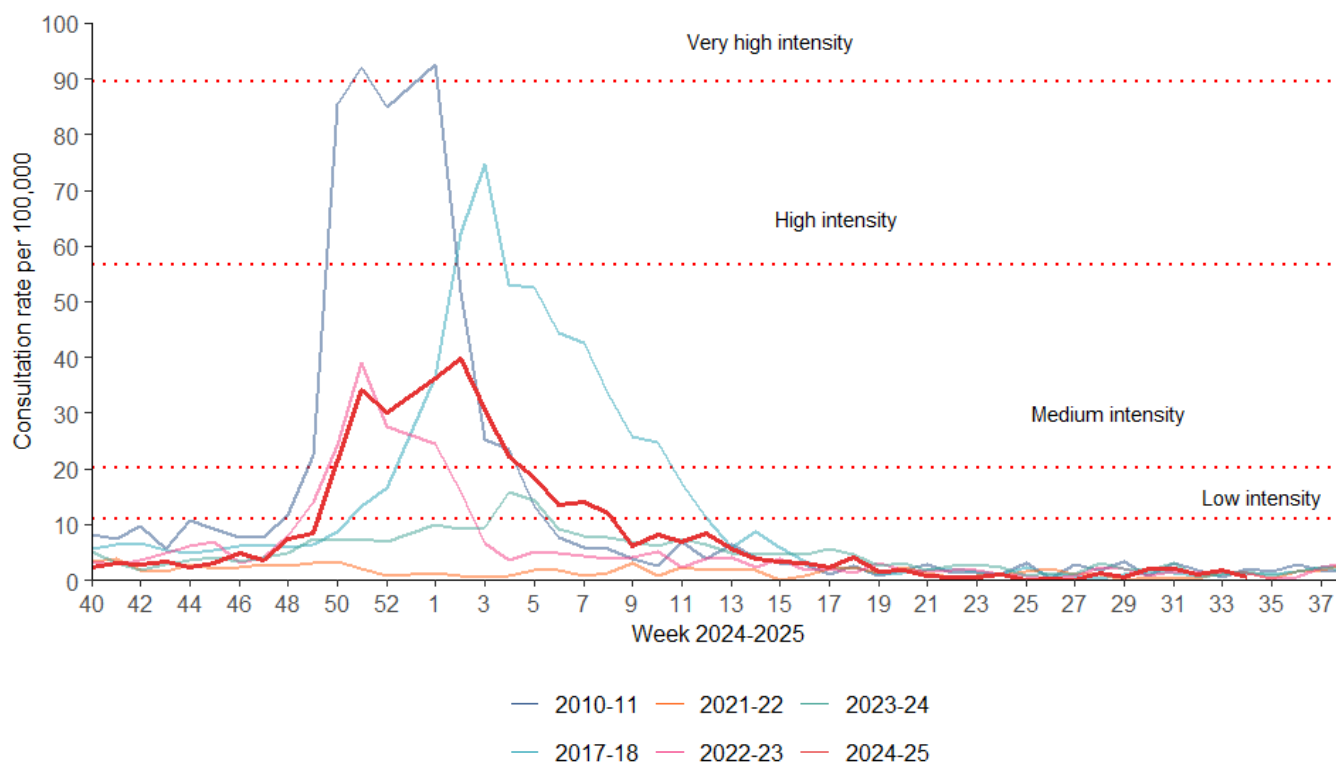
### GP consultations – Sentinel Network

**Figure 1.1.** Sentinel GP network clinical consultation rate for ILI per 100,000 practice population (Week 40, 1996 - Week 34, 2025).



Data correct as of 26/08/2025

**Figure 1.2.** Sentinel GP network clinical consultation rate for ILI per 100,000 practice population.



Data correct as of 26/08/2025

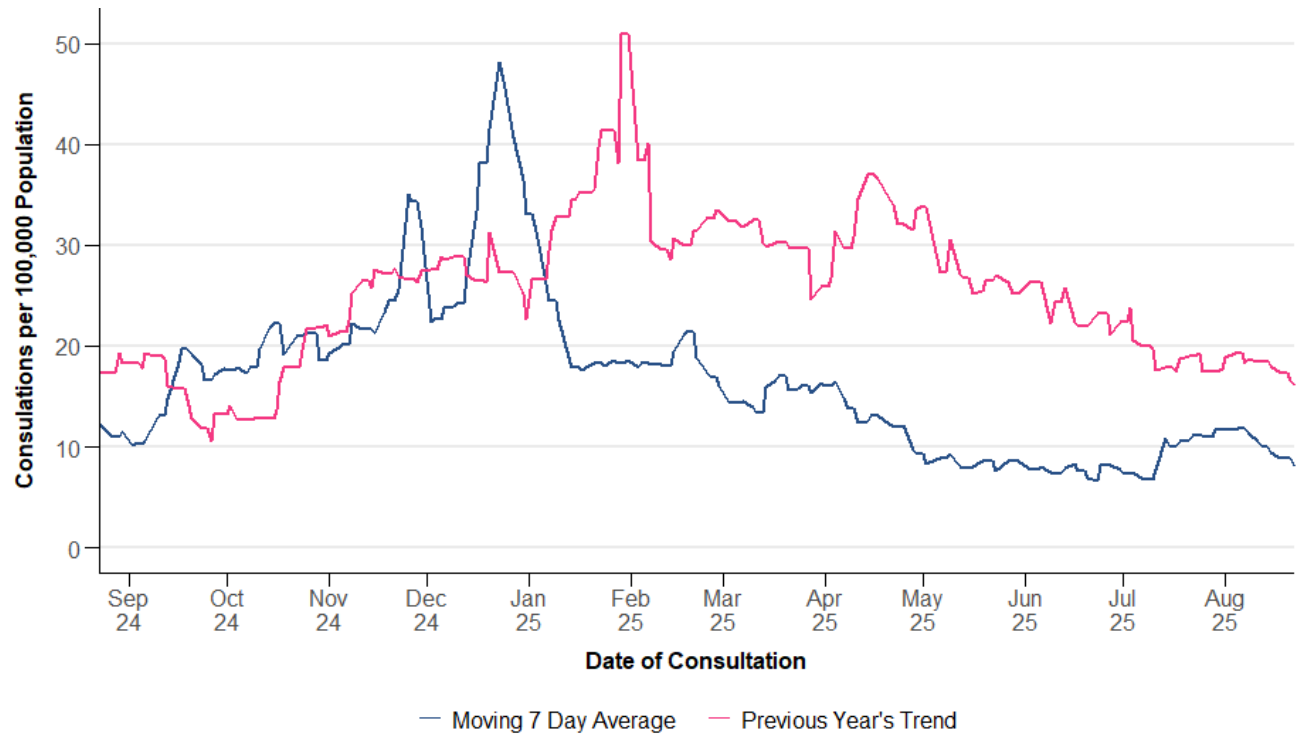
## GP Consultations - All Wales

**Table 1.2.** Summary of GP consultations per 100,000 practice population in Wales, by indicator, for Week 34, 2025. This table uses all available GP surveillance data (from sentinel and non-sentinel practices).

Indicator	Current Reporting Week	Preceding Week	Equivalent Period Last Year
ARI	8.81	10.02	18.41
COVID-19	0.11	0.08	1.31
LRTI	3.41	3.69	6.16
Pneumonia	0.07	0.06	0.06
Severe asthma	0.45	0.48	0.69
URTI	5.42	6.34	12.56
<b>Total</b>	<b>18.27</b>	<b>20.67</b>	<b>39.19</b>

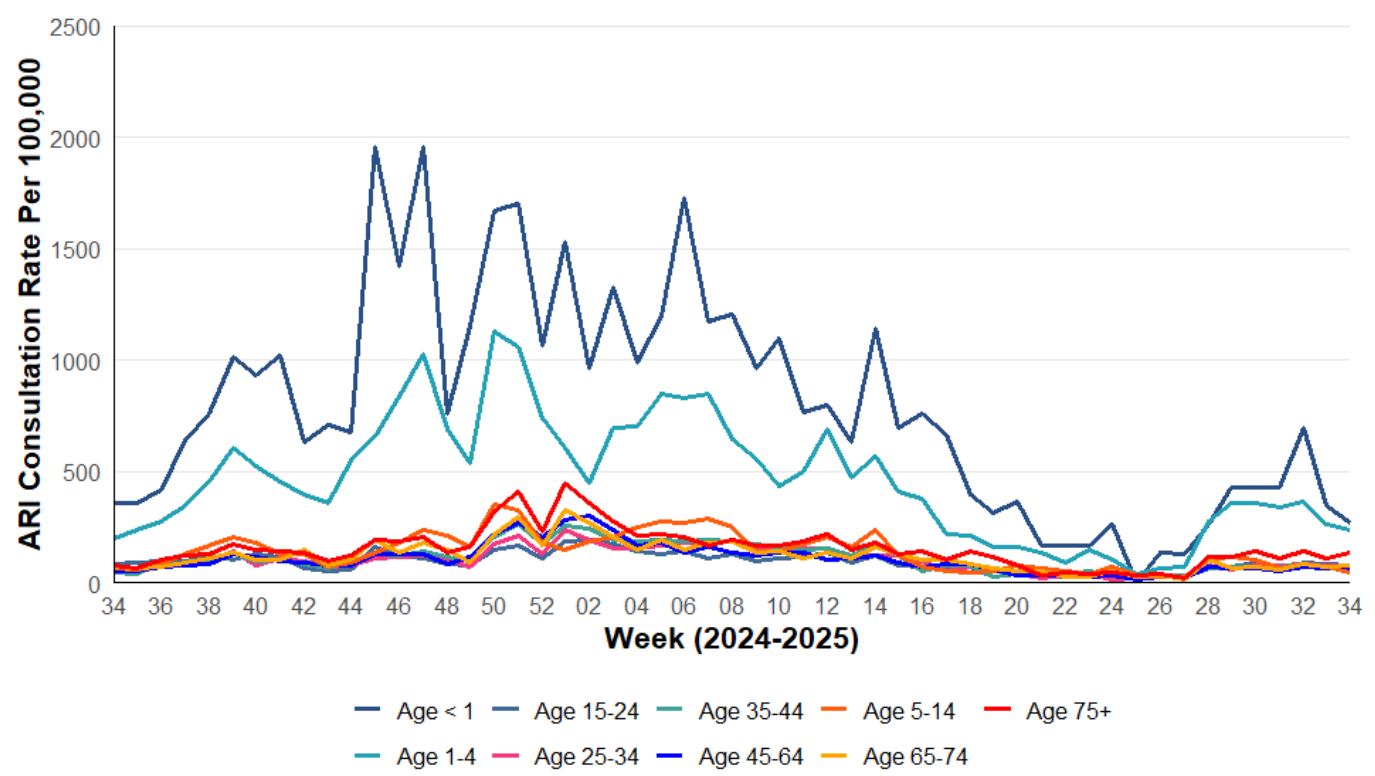
NB: "Current reporting week" refers to the average daily rate in the current reporting week. "Preceding week" refers to the average daily rate in the preceding week. "Equivalent period last year" refers to the average daily rate in the equivalent period last year.

**Figure 1.3.** All Wales GP consultation rates per 100,000 practice population for Acute Respiratory Infection (ARI).



Data correct as of 26/08/2025

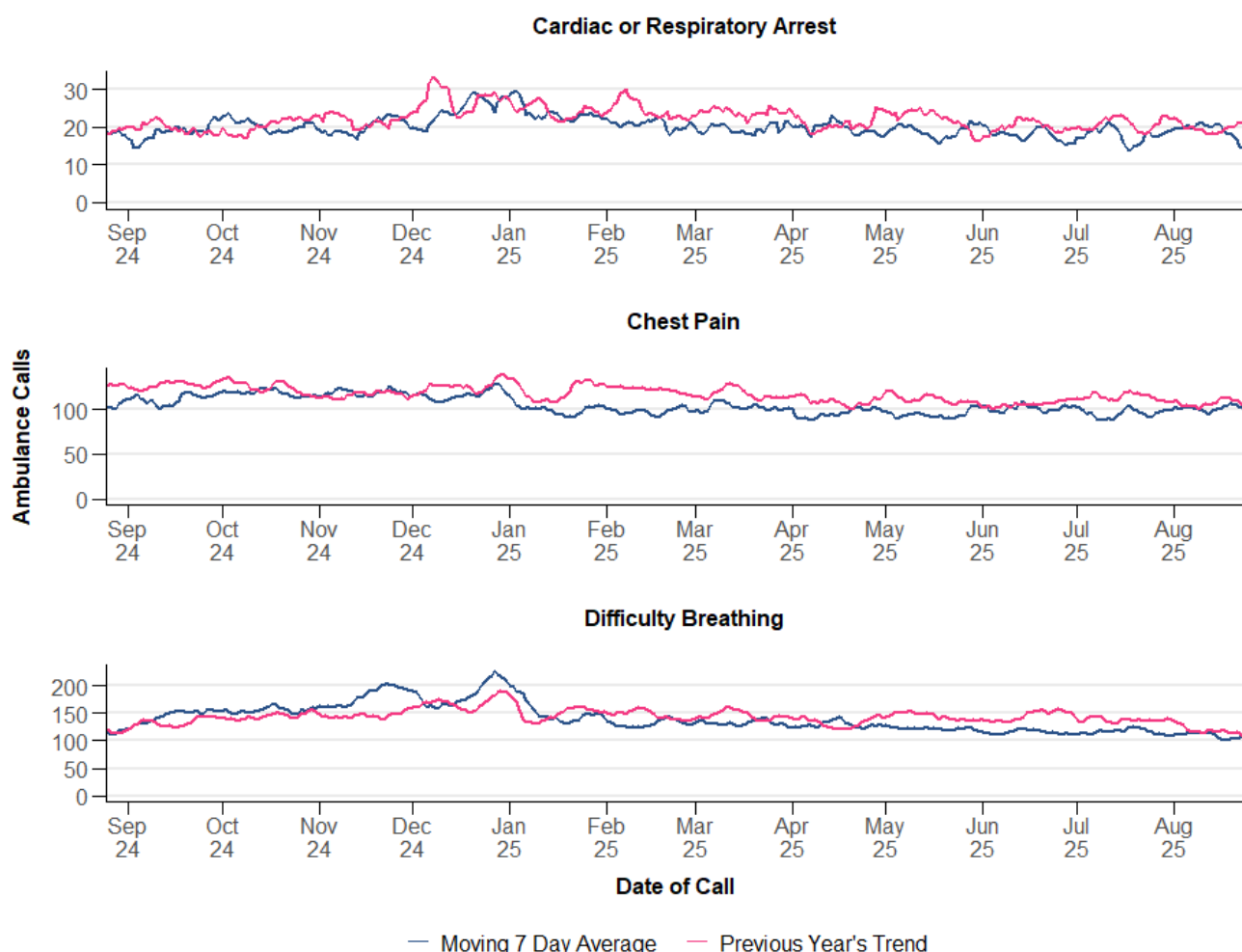
**Figure 1.4.** All Wales clinical consultation rates for Acute Respiratory Infection (ARI) per 100,000 practice population, by age bands.



Data correct as of 26/08/2025

## Ambulance Calls

**Figure 1.5.** Rolling seven-day average for ambulance calls for both current and the previous year, by symptom. This summary analysis uses data provided by the Welsh Ambulance Service NHS Trust.



Data correct as of 26/08/2025

**Table 1.3.** Summary of weekly number of Ambulance calls, by symptom in Wales, for Week 34, 2025. This summary analysis uses data provided by the Welsh Ambulance Service NHS Trust.

Indicator	Current Reporting Week	Preceding Week	Equivalent Period Last Year
Cardiac or Respiratory Arrest	116	146	129
Chest Pain	731	691	759
Difficulty Breathing	732	780	822
<b>Total</b>	<b>1,579</b>	<b>1,617</b>	<b>1,710</b>

NB: "Current reporting week" refers to the total number of calls in the current reporting week. "Preceding week" refers to the total number of calls in the preceding week. "Equivalent period last year" refers to the total number of calls in the equivalent period last year.



## 2. Virological Surveillance

### Wales Sentinel GP and Sentinel Community Pharmacy Network

- There were 54 surveillance samples from patients with ILI symptoms collected by sentinel GPs and community pharmacies during Week 34, 2025, as at 27/08/2025 (Table 2.1, Figure 2.1).
- The most commonly detected pathogens were rhinovirus (5) followed by parainfluenza (2) and enterovirus (2). Of the 54 tests, 75.9% were negative for all respiratory pathogens (Table 2.1, Figure 2.1).

### All Wales Datastore Respiratory Infection Testing

- There were 609 samples receiving multiplex respiratory panel testing, collected from patients attending hospitals and non-sentinel GPs during Week 34 (Table 2.2, Figure 2.2).
- The most commonly detected pathogens were SARS-CoV2 (COVID-19) (66) followed by rhinovirus (35) and adenovirus (11). Of the 609 tests, 79.0% were negative for all respiratory pathogens (Table 2.2, Figure 2.2).

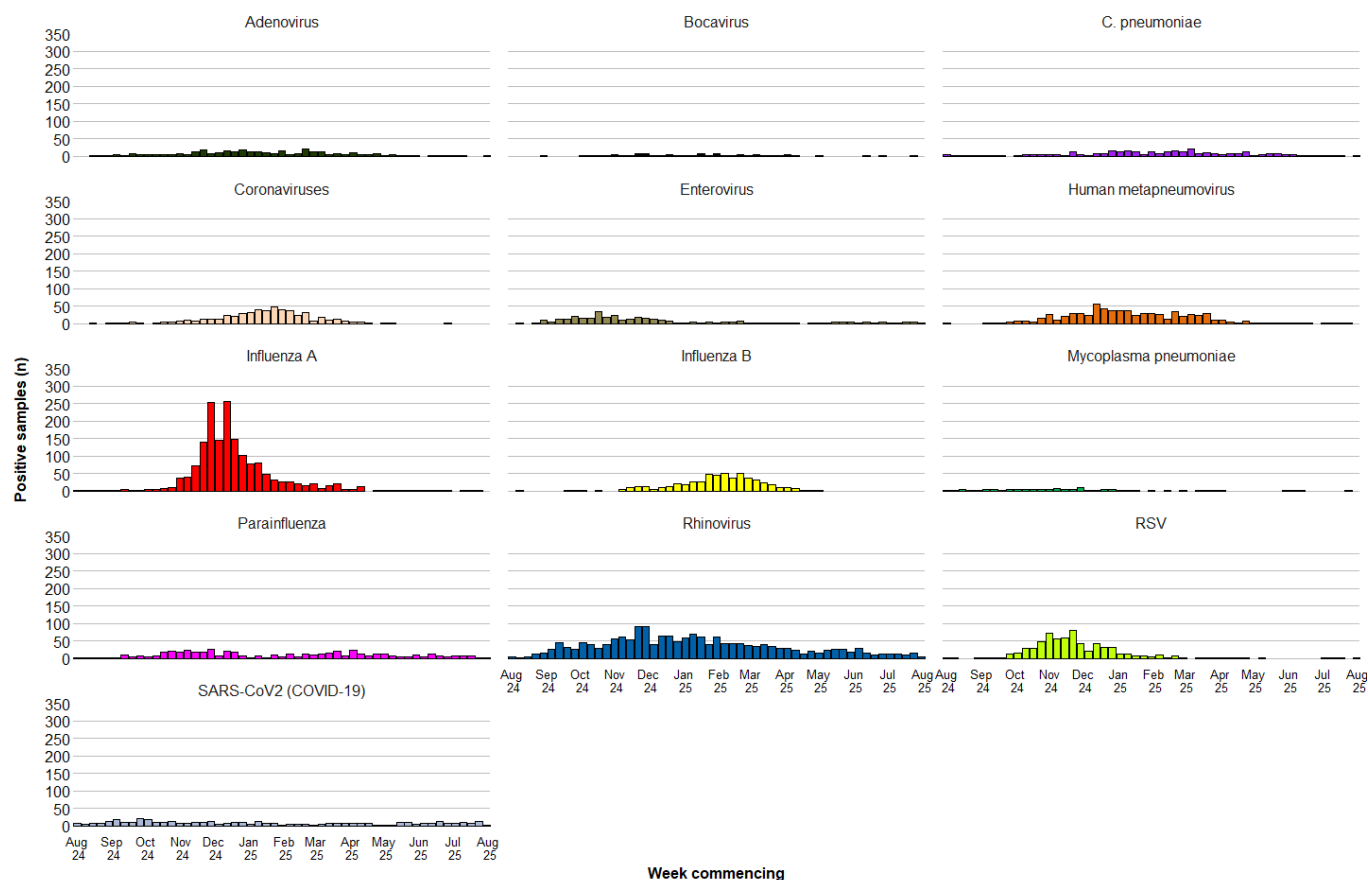
Additionally, during Week 34, 297 samples from patients were tested for influenza, RSV and SARS-CoV-2 only (Figure 2.3). Of these the following tested positive:

- 2 for influenza (two for influenza A, zero for influenza B)
- 33 for SARS-CoV-2 (COVID-19)
- 2 for RSV

**Table 2.1:** Pathogens detected, and sample positivity for samples from symptomatic patients from the Wales Sentinel GP and Sentinel Pharmacy networks, Week 34, 2025.

Pathogens Detected	Count (n)	Positivity (current week)	Positivity (previous week)	Trend
Rhinovirus	5	9.3%	27.8%	Decreasing
Parainfluenza	2	3.7%	3.7%	Stable
Enterovirus	2	3.7%	9.3%	Decreasing
RSV	1	1.9%	0.0%	Increasing
Adenovirus	1	1.9%	0.0%	Increasing
SARS-CoV2 (COVID-19)	1	1.9%	25.9%	Decreasing
C. pneumoniae	1	1.9%	0.0%	Increasing
Influenza A	0	0.0%	3.7%	Decreasing
Influenza B	0	0.0%	0.0%	Stable
Mycoplasma pneumoniae	0	0.0%	1.9%	Decreasing
Human metapneumovirus	0	0.0%	1.9%	Decreasing
Bocavirus	0	0.0%	1.9%	Decreasing
Coronaviruses	0	0.0%	0.0%	Stable

**Figure 2.1.** Pathogens detected in samples from symptomatic patients from the Wales Sentinel GP and Sentinel Pharmacy networks, by week of sample collection, Week 34, 2024 to Week 34, 2025.



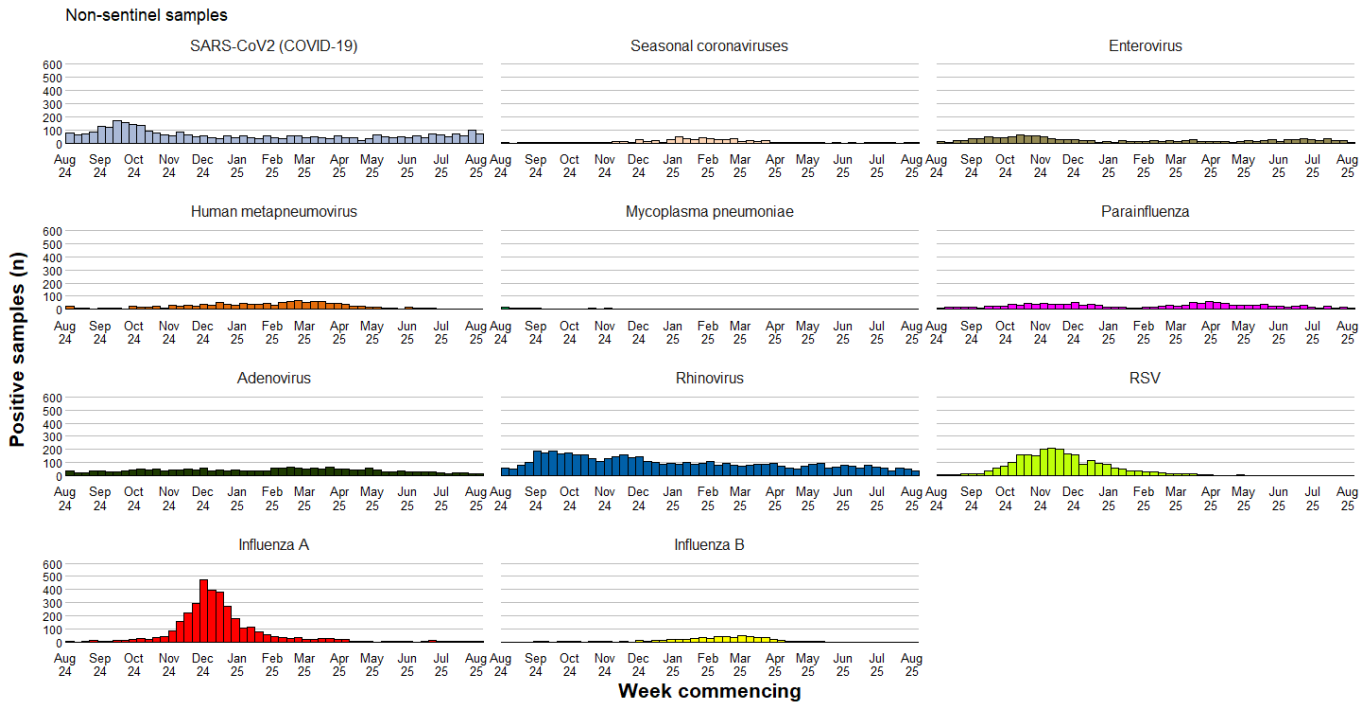
Data correct as of 27/08/2025

## All Wales Datastore Respiratory Infection Testing

**Table 2.2:** Pathogens detected and sample positivity for samples collected from hospital and non-Sentinel GP patients, Week 34, 2025.

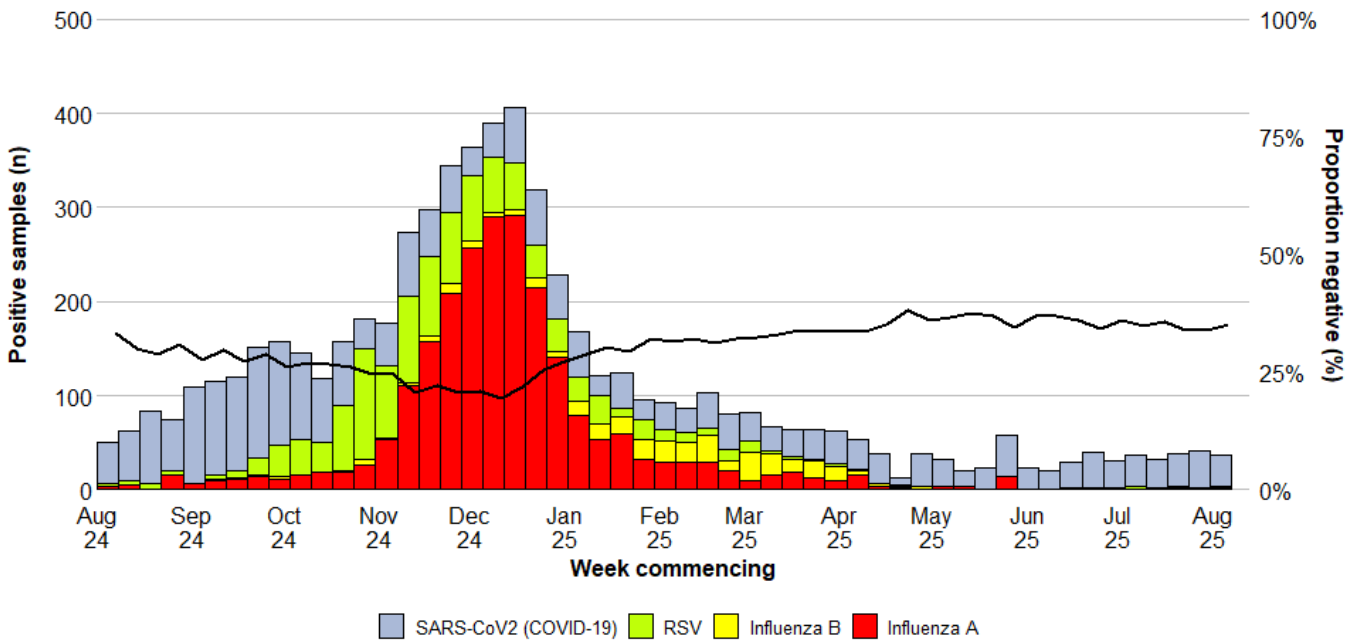
Pathogens Detected	Count (n)	Positivity (current week)	Positivity (previous week)	Trend
SARS-CoV2 (COVID-19)	66	10.8%	13.4%	Decreasing
Rhinovirus	35	5.7%	6.6%	Stable
Adenovirus	11	1.8%	1.7%	Stable
Parainfluenza	11	1.8%	2.1%	Stable
Enterovirus	6	1.0%	2.5%	Decreasing
Influenza A	3	0.5%	0.3%	Stable
Seasonal coronaviruses	2	0.3%	0.3%	Stable
Influenza B	1	0.2%	0.1%	Stable
Human metapneumovirus	1	0.2%	0.3%	Stable
RSV	0	0.0%	0.0%	Stable
Mycoplasma pneumoniae	0	0.0%	0.1%	Stable
Bocavirus	0	0.0%	0.0%	Stable
Chlamydia	0	0.0%	0.0%	Stable

**Figure 2.2.** Pathogens detected in samples collected from hospital and non-Sentinel GP patients, by week of sample collection, Week 34, 2024 to Week 34, 2025.



Data correct as of 26/08/2025

**Figure 2.3.** Samples from hospital patients submitted for RSV, Influenza and SARS-CoV2 testing only, by week of sample collection, Week 34, 2024 to Week 34, 2025.



Data correct as of 26/08/2025



## 3. Severe Acute Respiratory Infection (SARI) and surveillance in hospitals

### Sentinel SARI in emergency departments

- During the previous four weeks there were 45 surveillance samples taken from SARI surveillance sentinel emergency departments. The most common pathogen identified from these samples was Rhinovirus/Enterovirus(5) followed by SARS-CoV2 (COVID-19)(3) and Adenovirus(2). Of the 45 samples collected, 75.6% were negative for all respiratory pathogens (Table 3.1).
- During this time, the proportions of symptomatic patients attending sentinel emergency departments due to acute respiratory symptoms testing positive were 2% for influenza, 7% for SARS-CoV-2 and 0% for RSV.

### Hospital in-patients

- During week ending 24/08/2025 there were 33 patients admitted to hospital with confirmed COVID-19, RSV or influenza, (18 less than the previous week), equating to 1% of all hospital admissions in that reporting week.
- At 23:59 on 24/08/2025, there were 184 patients in hospital with confirmed COVID-19, RSV or influenza, 5 less than the previous Sunday. This equates to 2% of all hospital in-patients (IPs) at that time. Of whom 75% (138) were hospital acquired (HA).

### Critical-care

- During week ending 24/08/2025 there were 0 ARI critical care (CC) admissions, (1 less than the previous week), Equating to 0% of all CC admissions in that reporting week.
- At 23:59 on 24/08/2025, there were 0 patients in CC with confirmed COVID-19, RSV or influenza, 2 less than the previous Sunday. This equates to 0% of all CC in-patients at that time. Of whom 0% (0) were hospital acquired (HA).

### Virological surveillance in ICU

- During week 34, 2025, 29 respiratory samples were tested from patients in intensive care units (ICU). Of these: zero tested positive for Influenza, zero tested positive for RSV and zero tested positive for SARS-CoV2 (COVID-19) (Figure 3.4).

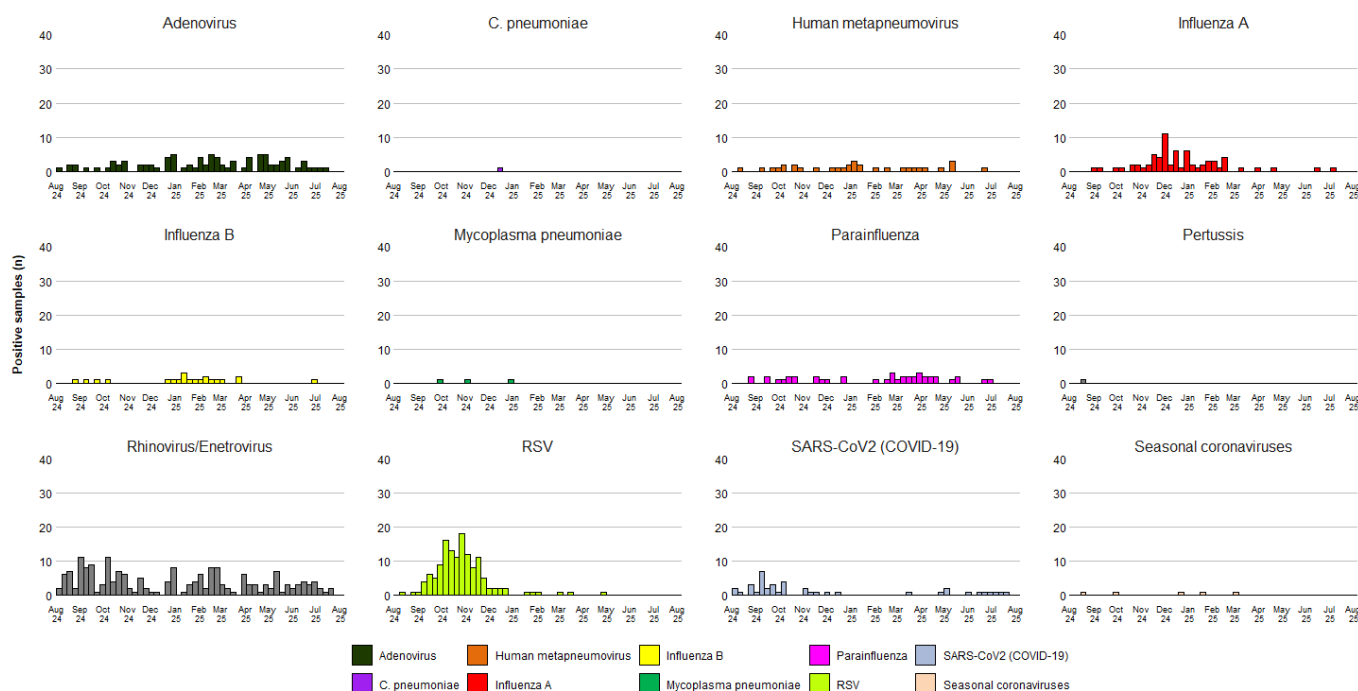
For detailed reports on surveillance of ARI in hospitals, including breakdowns by health board and age-group see: [Hospital admissions dashboard](#)

## Wales Sentinel SARI Emergency Department Network

**Table 3.1** Pathogens detected and sample positivity for samples collected from symptomatic patients presenting at participating SARI surveillance sentinel emergency departments, for Week 33, 2025.

Pathogens Detected	Meeting SARI case definition in the last 4 weeks		Meeting SARI case definition in the last 12 months	
	n	%	n	%
Adenovirus	2	4.4%	91	8.7%
C. pneumoniae	0	0.0%	1	0.1%
Human metapneumovirus	0	0.0%	32	3.1%
Influenza A	1	2.2%	73	7.0%
Influenza B	0	0.0%	21	2.0%
Mycoplasma pneumoniae	0	0.0%	3	0.3%
Parainfluenza	0	0.0%	42	4.0%
Pertussis	0	0.0%	1	0.1%
RSV	0	0.0%	135	12.9%
Rhinovirus/Enterovirus	5	11.1%	189	18.1%
SARS-CoV2 (COVID-19)	3	6.7%	41	3.9%
Seasonal coronaviruses	0	0.0%	5	0.5%
Negative	34	75.6%	497	47.6%
<b>Total</b>	<b>45</b>	<b>100%</b>	<b>1,057</b>	<b>100%</b>

**Figure 3.1** Pathogens detected in samples collected from symptomatic patients presenting at participating SARI surveillance sentinel emergency departments, for Week 33, 2025 and previous 12 months.



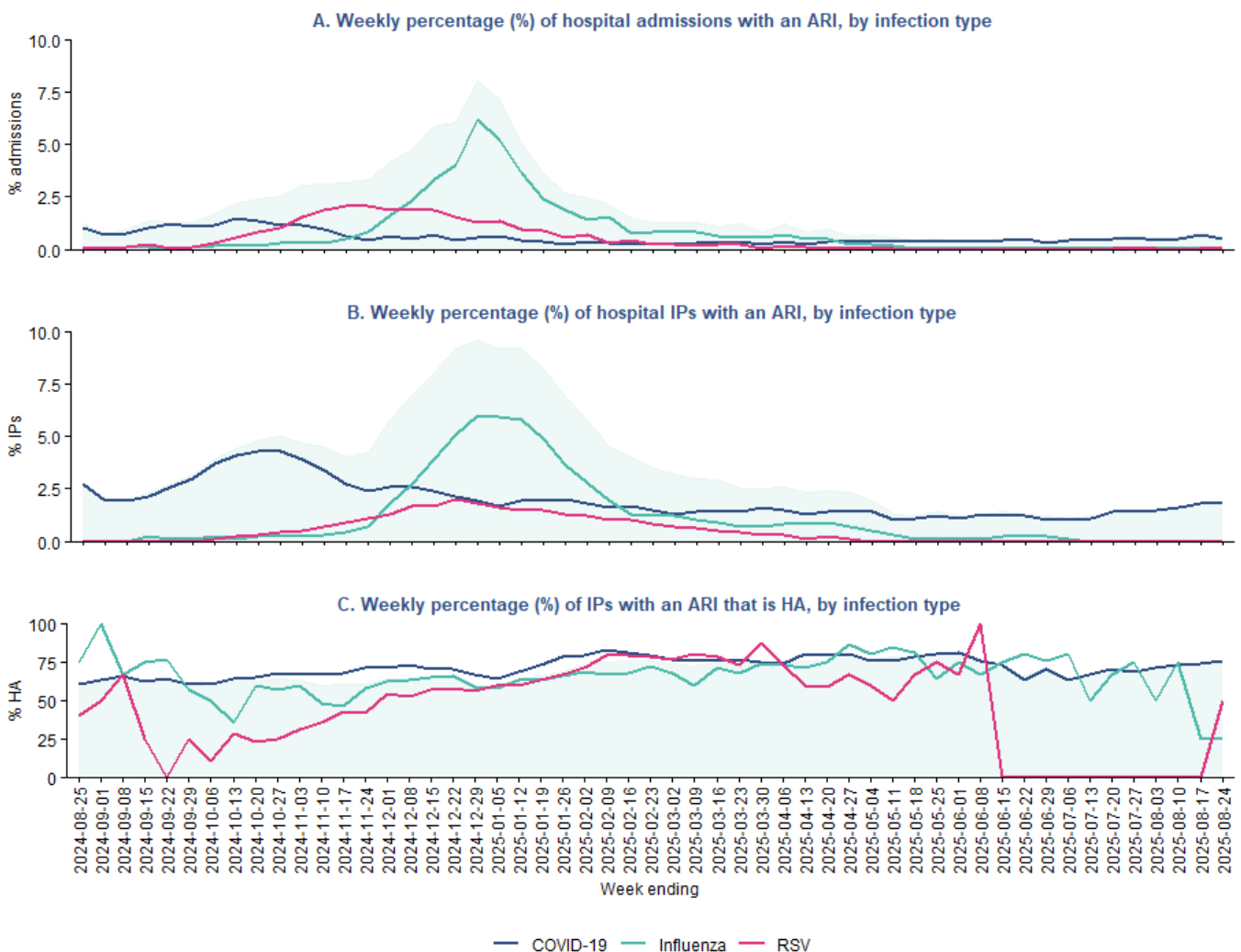
Data correct as of 21/08/2025

## Acute Respiratory Infection Surveillance in Hospital In-Patients

**Table 3.2.** Hospital admissions in patients confirmed **with** COVID-19, influenza and RSV (acute respiratory infection may not necessarily be the primary cause of admission).

Infection	Hospital admissions		Hospital In-patients		
	Count	% of all admissions	Count	% of all IPs	% HA (n)
<b>COVID-19</b>	29	<1%	178	2%	76% (136)
<b>Influenza</b>	3	<1%	4	<1%	25% (1)
<b>RSV</b>	1	<1%	2	<1%	50% (1)
<b>ARI total</b>	<b>33</b>	<b>1%</b>	<b>184</b>	<b>2%</b>	<b>75% (138)</b>

**Figure 3.2.** (A) Weekly percentage of hospital admissions where influenza, COVID-19 or RSV was confirmed. (B) Weekly percentage of total in-patients where influenza, COVID-19 or RSV was confirmed. (C) Weekly percentage of total number of in-patients with confirmed COVID-19, influenza or RSV where the infection was healthcare acquired.



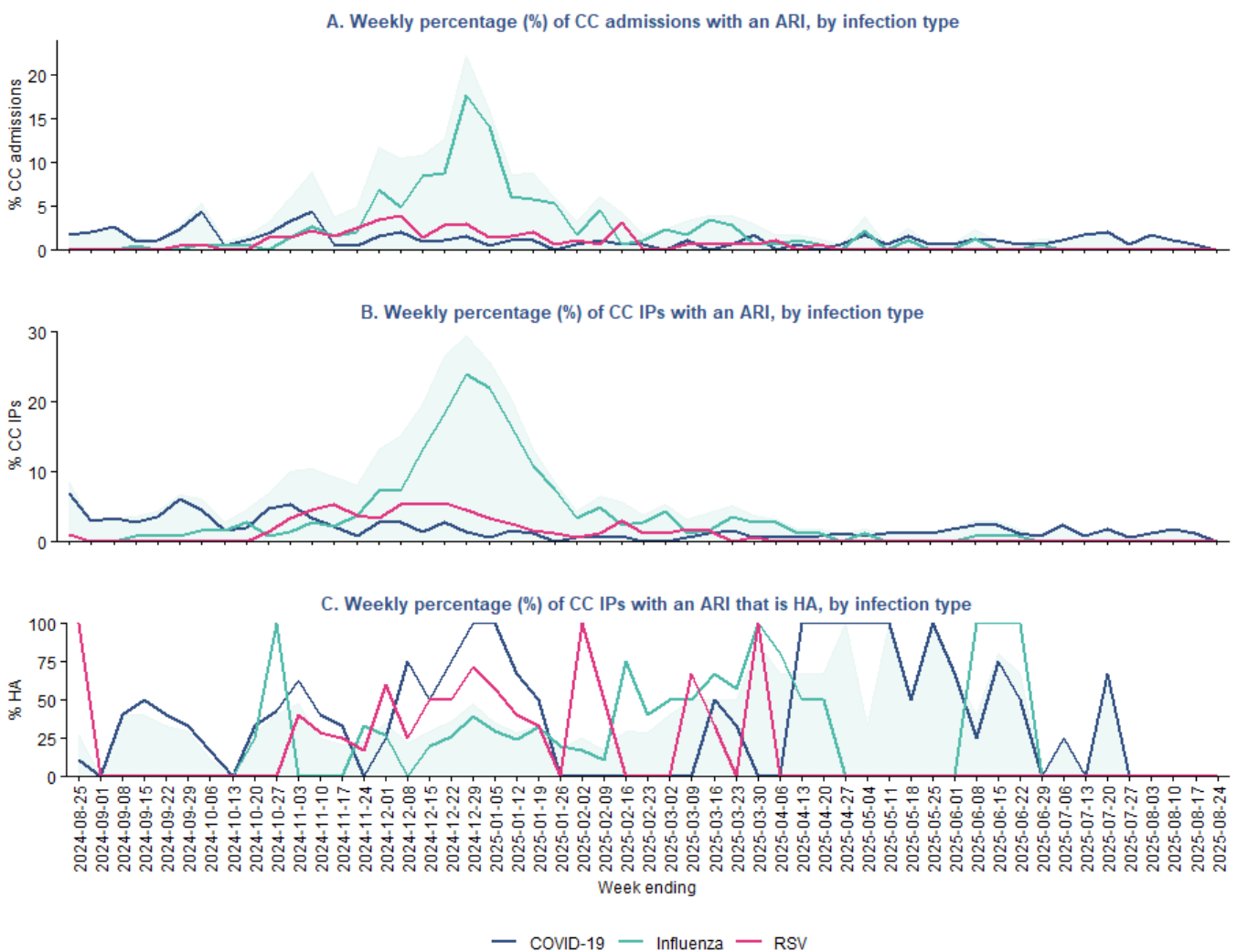
Data as of: 28-08-2025

## Acute Respiratory Infection Surveillance in Critical-Care In-Patients

**Table 3.3.** Critical care (CC) admissions in patients confirmed with COVID-19, influenza and RSV (acute respiratory infection may not necessarily be the primary cause of admission).

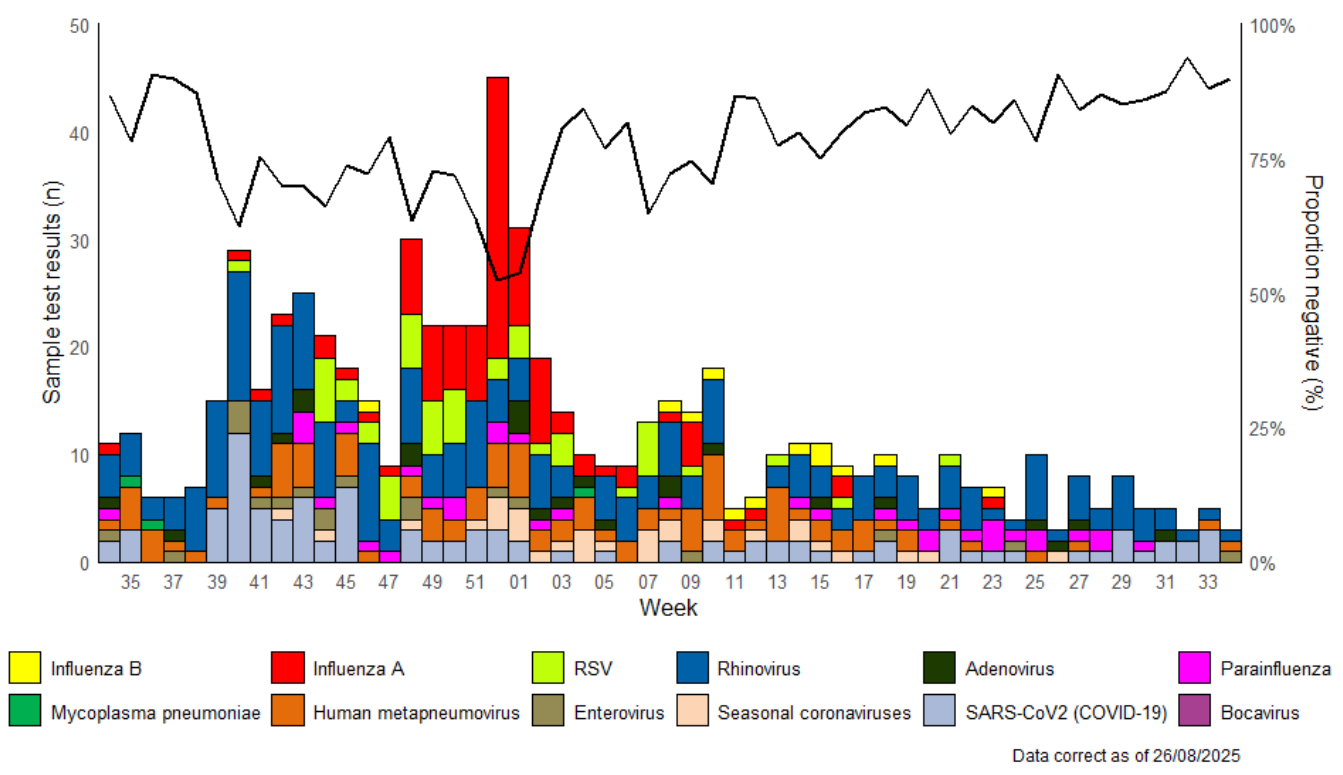
Infection	CC admissions		CC In-patients		
	Count	% of all CC admissions	Count	% of all CC In-patients	% HA (n)
COVID-19	0	0%	0	0%	0% (0)
Influenza	0	0%	0	0%	0% (0)
RSV	0	0%	0	0%	0% (0)
<b>ARI total</b>	<b>0</b>	<b>0%</b>	<b>0</b>	<b>0%</b>	<b>0% (0)</b>

**Figure 3.3.** (A) Weekly percentage of critical-care admissions where influenza, COVID-19 or RSV was confirmed. (B) Weekly percentage of total critical-care inpatients where influenza, COVID-19 or RSV was confirmed. (C) Weekly percentage of total number of critical-care inpatients with confirmed COVID-19, influenza or RSV where the infection was healthcare acquired.



Data as of: 28-08-2025

**Figure 3.4.** Samples submitted for virological testing from ICU patients, by week of sample collection, Week 34, 2024 to Week 34, 2025. The black line indicates the percentage of samples which tested negative for any of the pathogens listed.



## 4. Settings-based surveillance and outbreaks

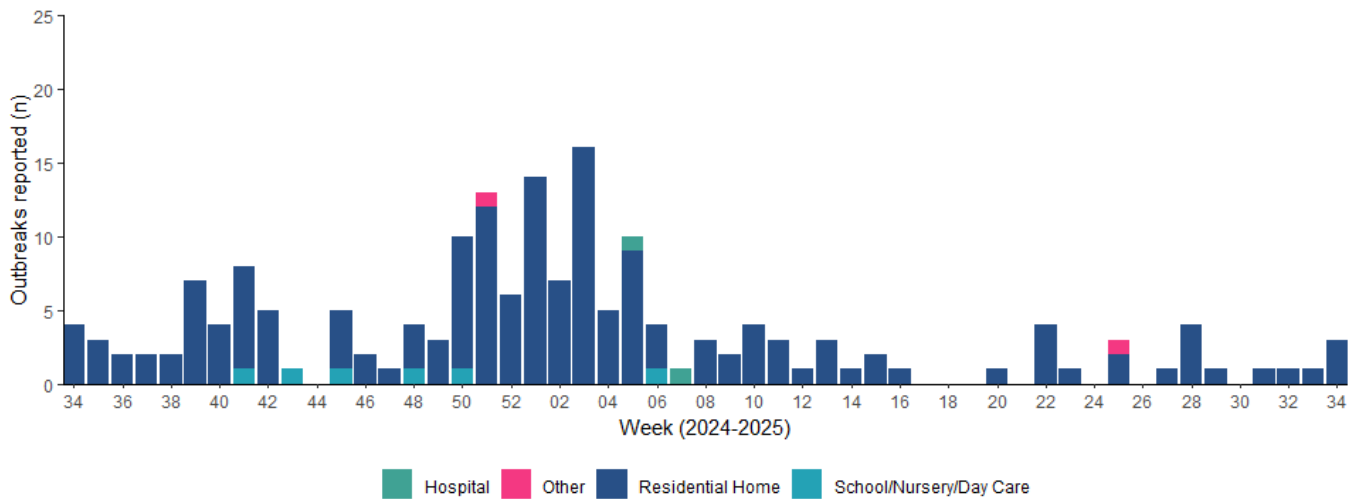
### Acute Respiratory Infection Outbreaks Reported to Public Health Wales Health Protection Team

During Week 34, 2025, 3 ARI outbreaks were reported to the Public Health Wales Health Protection Team.

Of these:

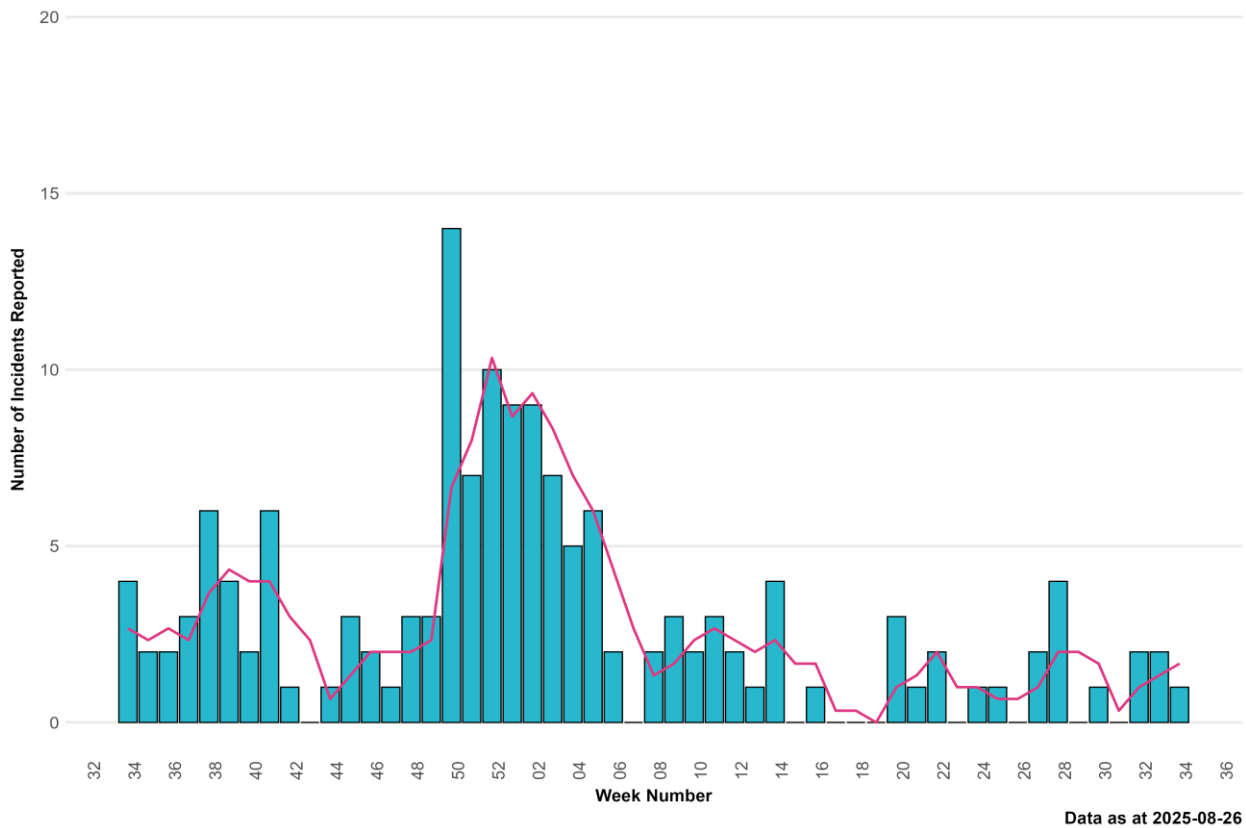
- Two were Covid-19, and one was respiratory
- All three were in residential homes.

**Figure 4.1.** ARI outbreaks and incidents reported to Public Health Wales Health Protection Team, by setting and week of report. Completeness of reporting for outbreaks and incidents from schools/nurseries and other community settings is unknown.



Data correct as of 26/08/2025

**Figure 4.2.** ARI outbreaks and incidents reported to Public Health Wales Health Protection Team, from residential care home settings, by week of onset of first case. The three-week rolling average is shown in pink.

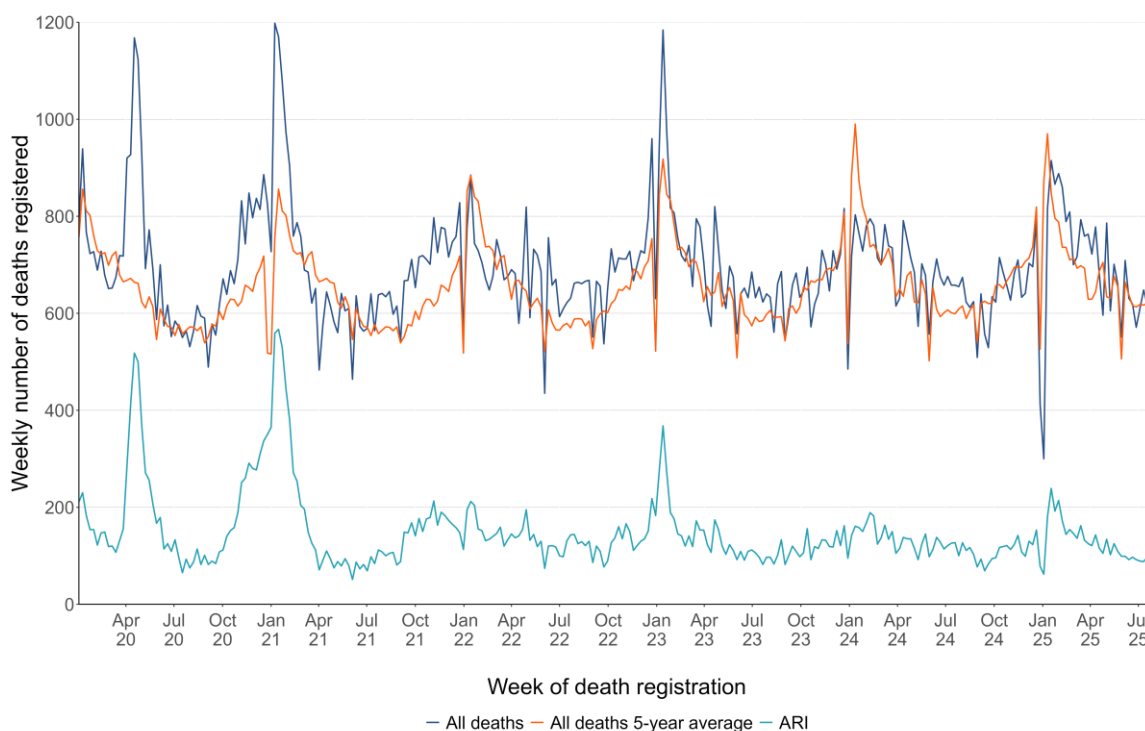




## 5. Mortality surveillance

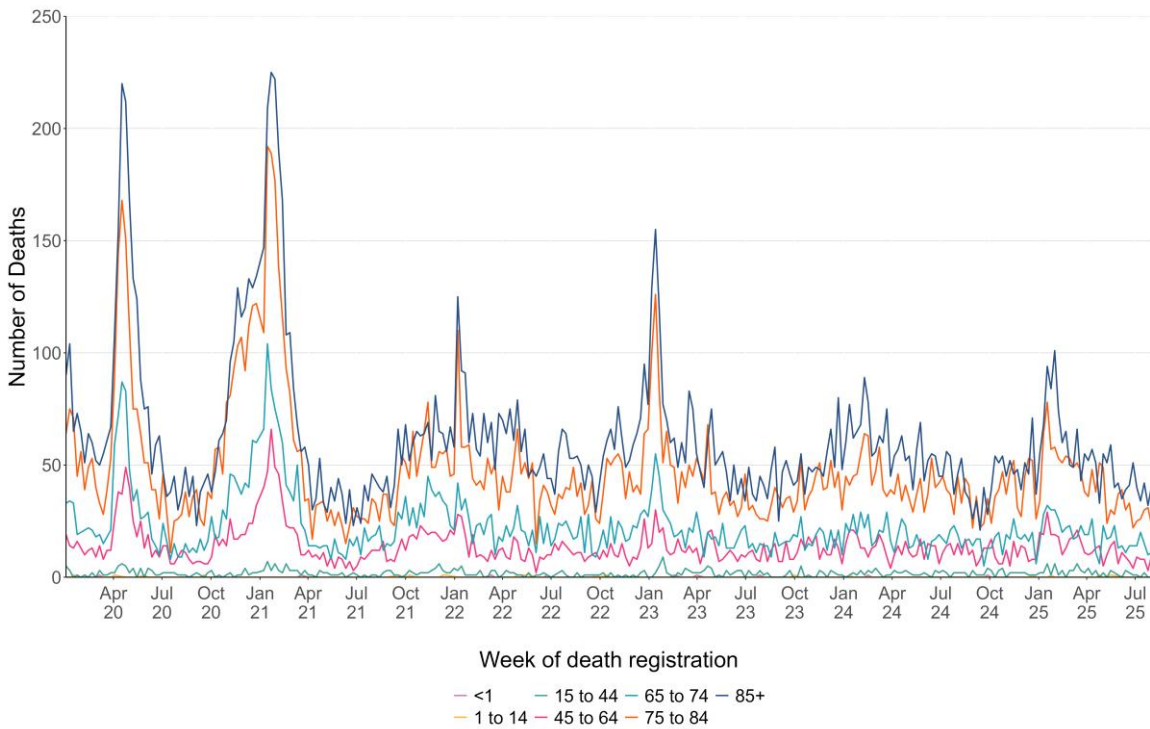
- Thus far this season, according to European Mortality Monitoring (EuroMoMo) methods, no excess has been reported in the weekly number of deaths from all causes in Wales.
- Breakdowns of all-cause and ARI specific mortality, according to data from deaths registrations provided by the Office for National Statistics are summarised by week, age-group, setting of death and deprivation quintile of residence in Figures 5.2 to 5.4. Data for the most recent weeks in these summaries should be interpreted with caution due to potential reporting delays.
- Deaths relating to ARI have been defined using the following ICD10 codes: (J09-J22, J80, U07.1, U07.2 and J04)

**Figure 5.1.** Number of deaths registered (any cause), 5-year average (any cause) and deaths relating to ARI, by week of death registration.



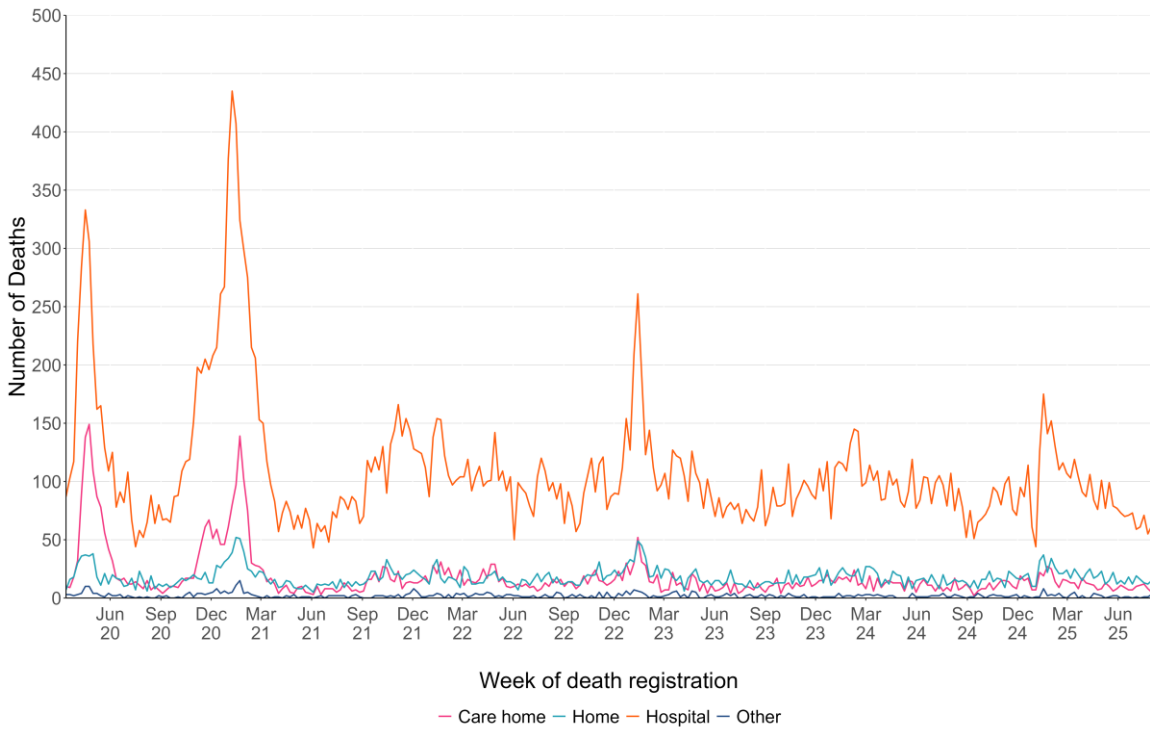
Data as of 19/08/2025

**Figure 5.2** Numbers of ARI related deaths by age-group and week of death registration.



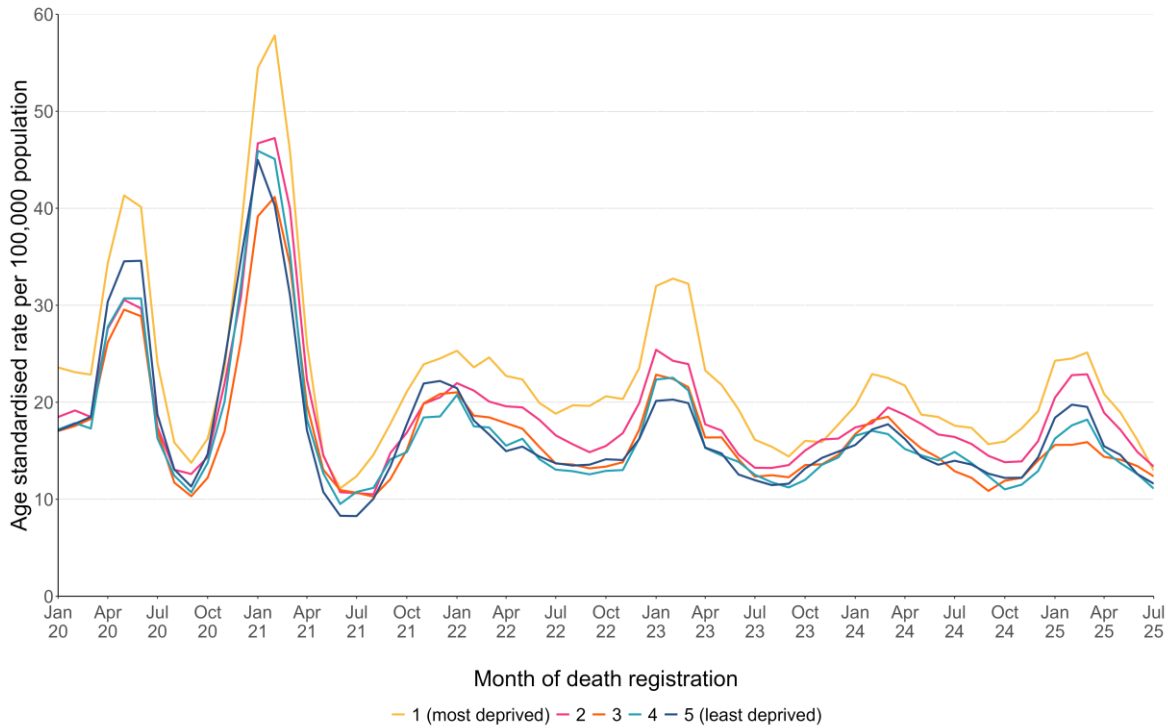
Data as of 19/08/2025

**Figure 5.3.** Numbers of deaths due to ARI, by place of death and week of death registration.



Data as of 19/08/2025

**Figure 5.4.** Numbers of ARI deaths, by quintile of deprivation of area of residence (based on the Welsh Index of Multiple Deprivation rankings of Lower Super Output Areas) and week of death registration.



Data as of 19/08/2025

For interactive versions of these data, including health board specific breakdowns, see: [ONS mortality dashboard](#)

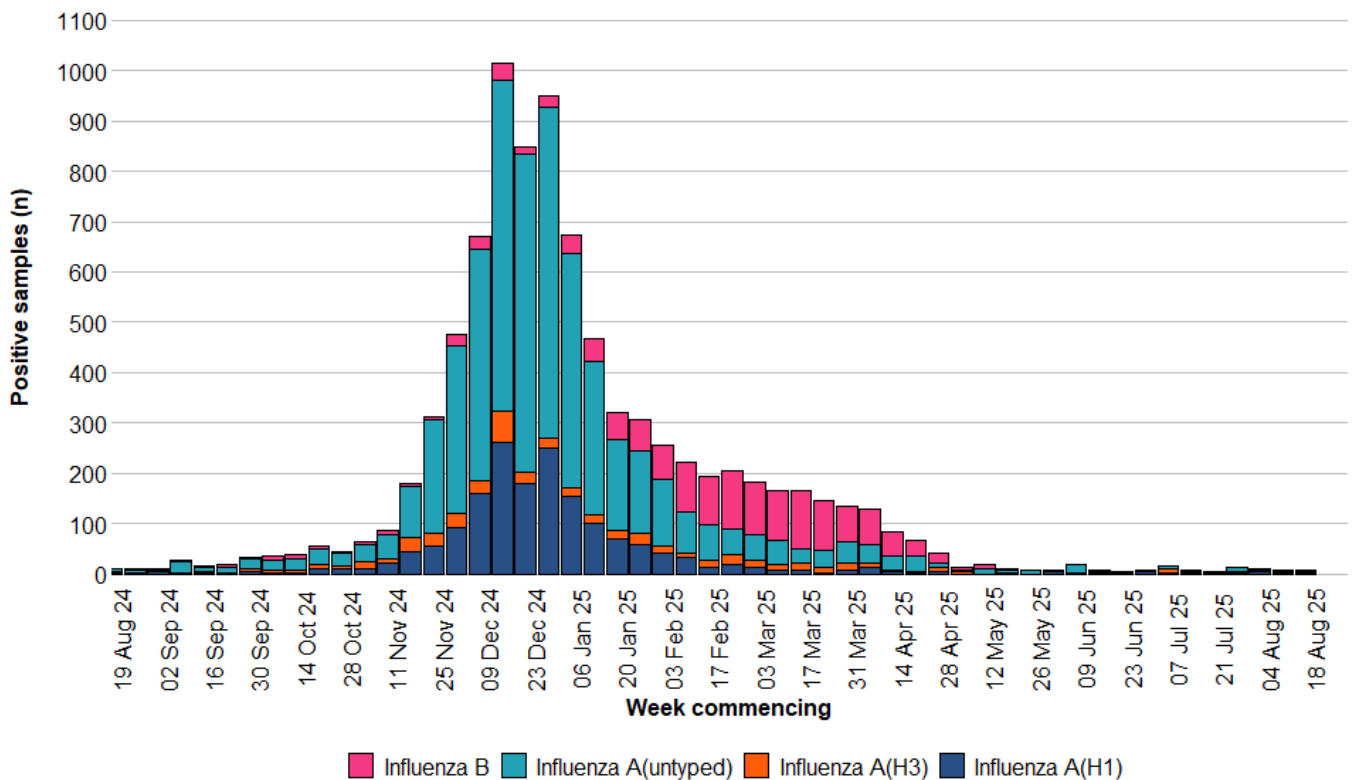


## 6. Pathogen-specific surveillance

### Influenza

- Influenza A(H1N1) is the most commonly detected influenza subtype in Wales since week 40 2024 (1,667 confirmed cases), followed by influenza B (1,427 confirmed cases) and influenza A(H3N2) (511 confirmed cases). Additionally, there have been 5104 untyped Influenza A cases.

**Figure 6.1.** Influenza subtypes based on samples submitted for virological testing by Sentinel GPs and community pharmacies, hospital patients, and non-Sentinel GPs, by week of sample collection, Week 34, 2024 to Week 34, 2025.

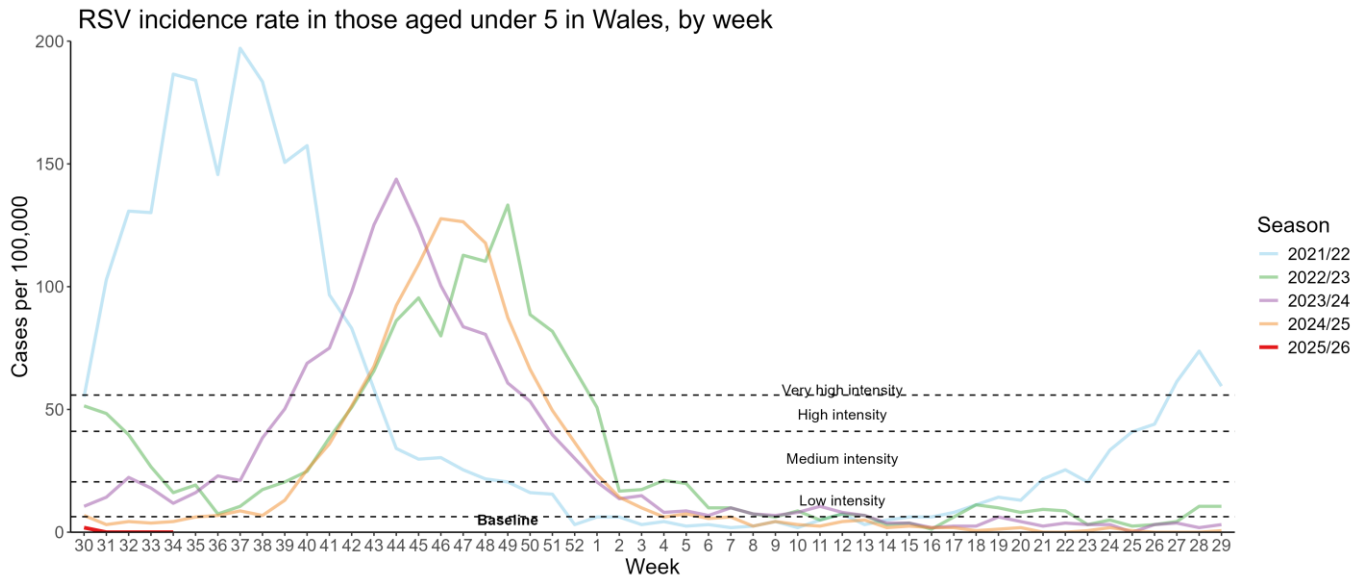


Data correct as of 26/08/2025

## Respiratory Syncytial Virus (RSV)

- RSV incidence per 100,000 population in children aged under five years is currently at baseline (0.0) intensity levels per 100,000 population during week 34 2025.

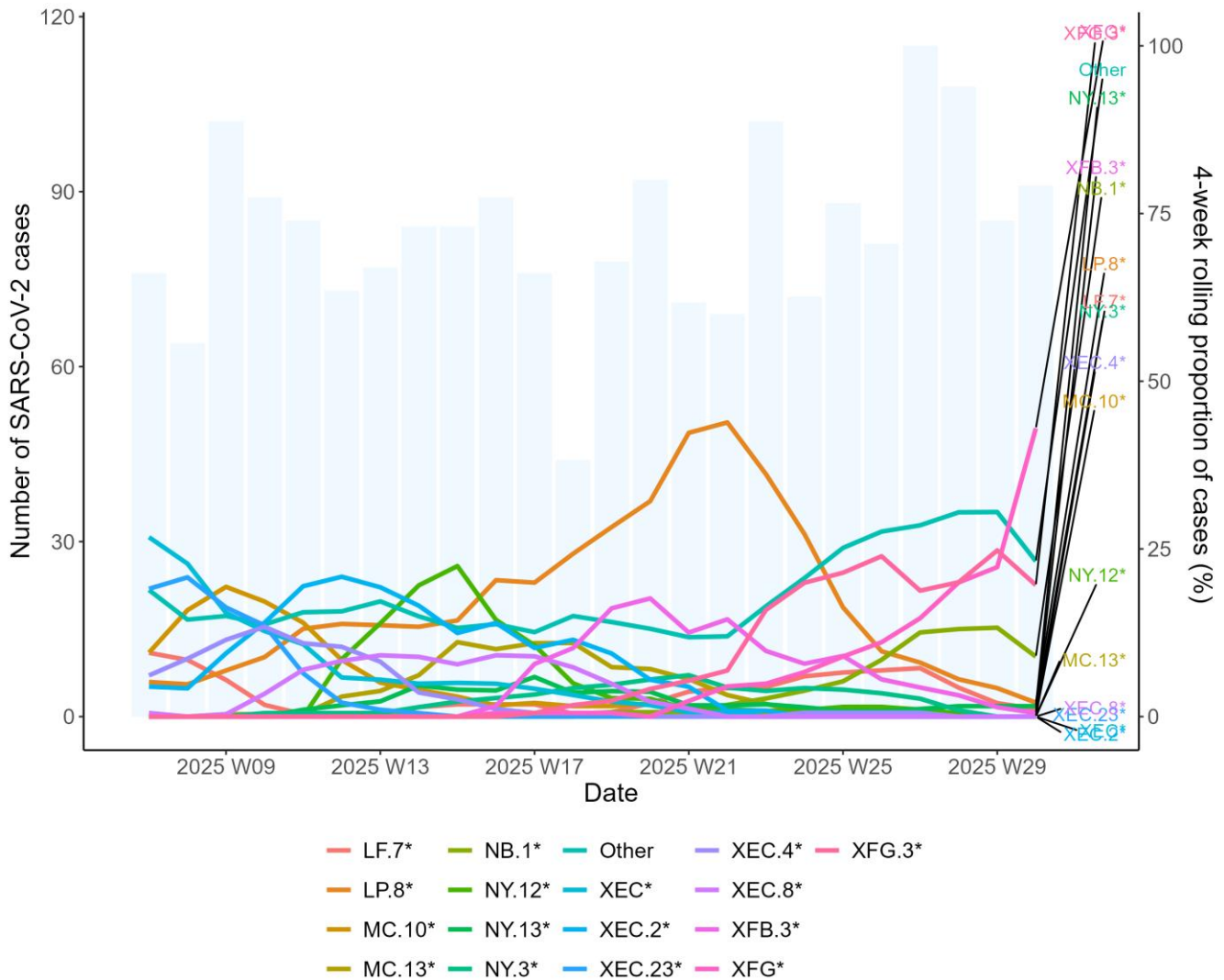
**Figure 6.2.** RSV incidence rate per 100,000 population aged under five years, Week 30 2020 to Week 34 2024.



## SARS-CoV-2 Variant surveillance

- Pango group Other\* is the most frequently detected variant in Wales currently, accounting for 30.3% of sequenced cases in the previous six weeks.

**Figure 6.3.** Weekly number of SARS-CoV-2 cases (bars) and the 4-week rolling average proportion of sequenced cases attributed to each Pango lineage group (lines) from residents in Wales for the past six months (2025 W08 to 2025 W32).



For detailed information on genomic surveillance of SARS-CoV-2 in Wales, please see: <https://public.tableau.com/app/profile/public.health.wales.health.protection/viz/COVID-19genomicsurveillance/Summary>

## 7. International Summary

### Influenza activity – UK and international summary

- GP ILI consultations increased to 2.1 per 100,000 in Northern Ireland in Week 32 and remained stable at 0.8 per 100,000 in Scotland in Week 33.
- During Week 32, 1,445 samples tested for influenza were reported in England of which 27 were positive for influenza (21 influenza A (not subtyped), four influenza A (H3N2), one influenza A (H1N1)pdm09, and one influenza B). Overall influenza increased to 1.9% in England and to 0.5% in Northern Ireland in Week 32 and remained stable at 0.8% in Scotland during Week 33. UK summary data are available from the [UKHSA Influenza and COVID-19 Surveillance Report, Respiratory surveillance report | HSC Public Health Agency](#) and [COVID-19 & Respiratory Surveillance \(shinyapps.io\)](#)
- The WHO and the European Centre for Disease Prevention and Control (ECDC) reported during Week 33, that influenza positivity remained below the 10% positivity epidemic threshold. Of the 23 countries and areas reporting on influenza intensity, none reported medium intensity or higher. Of the 22 countries and areas reporting on geographic spread of influenza viruses within a country or area, none reported widespread or regional distribution. There were 13 confirmed influenza virus infection detections reported from sentinel primary care. **Source:** European Respiratory Virus Surveillance Summary (ERVISS): <https://erviss.org/>
- Globally, influenza activity remained low, with influenza A viruses predominant.
- In the Southern hemisphere, influenza activity remained stable or decreased in most reporting countries. Influenza activity remained elevated in Oceania and some countries in Eastern Africa and South-East Asia. Influenza activity returned to low levels in countries in Tropical and Temperate South America in comparison to recent weeks.
- In the Northern hemisphere, over the past few weeks, influenza activity remained low and stable in most transmission zones except for Western and Middle Africa, Western and Southern Asia where an increasing trend was observed and percent positivity was over 30% in some countries. Influenza positivity remained elevated but stable also in some countries in Central America and the Caribbean, East Africa and South-East Asia.
- Influenza A(H1N1)pdm09 predominated in the Americas, Western and Middle Africa, South West Europe, Eastern Asia and Oceania whilst influenza A(H3N2) was the predominant circulating virus in Southern Africa, Western and South-East Asia. In Northern Africa, influenza A and B viruses were detected in similar proportion.
- **Source:** WHO influenza update: <https://www.who.int/teams/global-influenza-programme/surveillance-and-monitoring/influenza-updates/current-influenza-update>
- Based on FluNet reporting (as of 18/08/2025) during Week 33, globally there were 506 A(H1N1), 279 A(H3), 955 A(not subtyped), 124 influenza B (Victoria) and 206 influenza B(lineage not determined) **Source:** Flu Net: [flunetchart](http://flunetchart)

### Update on influenza activity in Australia and New Zealand

- In New Zealand, during the week ending 17/08/2025, influenza-like illness activity (ILI) activity in the community is increasing. Through seasonal sentinel community influenza surveillance, 81 influenza cases were identified at sentinel practices during the week ending 03/08/2025. **Source:** Institute of Environmental Science & Research, New Zealand <https://www.phfscience.nz/digital-library/respiratory-illness-dashboard/>

- In Australia, according to the latest available update (fortnight ending 10/08/2025), influenza-like illness (ILI) activity in the community decreased but remained higher than the trends observed at the same time last year. To date, the majority of nationally reported laboratory-confirmed influenza cases were influenza A.

**Source:** Institute of Environmental Science & Research, New Zealand

<https://www.health.gov.au/resources/collections/australian-respiratory-surveillance-reports-2025?language=en>

## Respiratory syncytial virus (RSV) in North America

The USA CDC reported that the RSV positivity rate remained stable in Week 33.

**Source:** CDC RSV national trends: [National Respiratory and Enteric Virus Surveillance System | CDC](#)

## Middle East respiratory syndrome coronavirus (MERS-CoV) – latest update from WHO and ECDC

- As of 12 May 2025, Saudi Arabia reported nine MERS-CoV cases from 01 March 2025 to 21 April 2025, including 2 deaths. WHO Global Alert and Response website: <https://www.who.int/emergencies/disease-outbreak-news>
- Rapid risk assessments of the situation from ECDC, which contain epidemiological updates and advice for travellers and healthcare workers, are available from: <https://ecdc.europa.eu/en/middle-east-respiratory-syndrome-coronavirus>
- Further updates and advice for healthcare workers and travellers are available from WHO: <http://www.who.int/emergencies/mers-cov/en/> and from NaTHNaC: <https://travelhealthpro.org.uk/news/237/mers-cov-update-travelhealthpro-country-pages>

## Human infection with avian influenza A

- The WHO has published an updated assessment of recent influenza A(H5N1) virus events in animals and people. Currently, the global public health risk of influenza A(H5N1) viruses to be low, while the risk of infection for occupationally exposed persons is low to moderate, depending on the risk mitigation measures in place. Transmission between animals continues to occur and, to date, a growing yet still limited number of human infections are being reported. 20 December 2024:

Other updates on zoonotic influenza infections and risks to humans are available from the WHO Global Alert & Response website: <https://www.who.int/emergencies/disease-outbreak-news>

## 8. Notes on interpretation

**Hospital/critical care (CC) admission:** A hospital/CC admission that involves a minimum of 1 overnight stay. N.B. Transfers to another hospitals within the same health board (HB) are counted as the same continuous inpatient stay.

**ARI hospital/CC admission:** A hospital/CC admission where the patient tested positive for an ARI infection in the community within 28 days prior to the admission date or in hospital up to 2 days after admission (where the date of admission is day 1).

**Hospital/CC inpatient (IP):** A patient admitted to hospital/CC on or before the specified date, with a minimum of 1 overnight stay who had not been discharged from hospital/CC by 23:59 of the specified date.

**ARI hospital/CC IP:** A hospital/CC IP who tested positive for an ARI in hospital or in the community within the previous 28 days. Hospital acquired (HA): An IP whose first positive ARI test was taken in hospital more than 7 days after admission for COVID-19 or more than 3 days after admission for Influenza and RSV.

**ARI outbreaks and incidents in a care home setting (fig 4.2):** Information about incidents and outbreaks is taken from the case management system used by Public Health Wales. An incident in this context refers to the way that information is recorded and organised on the case management system. Not all acute respiratory infections affecting two or more care home residents with a common exposure (an outbreak\*) will be recorded as incidents and captured in this graph. This may be because there was not a need for ongoing public health advice and therefore a different type of record was created. As a result, certain infections (e.g. influenza) may be captured more than others and the actual number of ARI outbreaks is likely to be underestimated. Figure 4.2 is therefore most useful for telling us about trends in the number of incidents over time, although trends may be affected both by changes in testing policy and by changes in how the incident management system is used. We will continue to review the impact of such changes and update our methodology or caveats as appropriate. Note that this definition is one of the traditional or epidemiological definitions of an outbreak, not all outbreaks will result in formally activating The Communicable Disease Outbreak Plan for Wales <https://phw.nhs.wales/topics/the-communicable-disease-outbreak-plan-for-wales>

## 9. Statement of voluntary application of the Code of Practice for Statistics

The Communicable Disease Surveillance Centre in Public Health Wales publishes a weekly integrated respiratory infection summary. This report highlights the latest available information from a number of Public Health Wales surveillance schemes, reports and other sources on Acute Respiratory Infections (ARI) in Wales.

Our publications are categorised as management information and this statement outlines the steps taken towards voluntary adoption of the Code of Practice for Statistics to ensure that our publications are high quality, useful for supporting decisions and well-respected. The code is built around 3 pillars:

- **Trustworthiness:** confidence in the people and organisations that produce statistics and data
- **Quality:** data and methods that produce assured statistics
- **Value:** publishing statistics that support society's needs for information

### Trustworthiness

This report (and the underlying analysis) has been developed by a team of epidemiologists and analysts under the guidance of senior scientists and consultants. We work as part of a wider integrated respiratory surveillance group, which brings together expertise in virology, epidemiology, genomics and surveillance. Key information summarised in this surveillance report is routinely shared with UK Health Security Agency (UKHSA), World Health Organisation (WHO) and other international networks to enable international surveillance and epidemiological studies. Appropriate disclosure control methods have been considered and applied.

The report is published on a weekly basis during winter period between week 40 (October) and 20 (May) of the following year and on a fortnightly basis during the summer period. Where there are interruptions to data flows, or other technical issues affecting the production of elements of the report, we highlight in the text as appropriate. Where there are unplanned delays to publication we inform our stakeholders. We highlight key changes in the report when necessary.

### Quality

We are continuously seeking to improve the quality of our surveillance. Where possible, ARI surveillance schemes in Wales follow, or are working towards following, good practice recommendations and international guidance (e.g. the [WHO MOSAIC framework](#), using professional judgement. The surveillance team routinely consults with other UK teams and international specialists. Where there are limitations in data or interpreting data, we try to specify and continue work to address them.

### Value

This information contributes to many areas, including response to health threats, public health interventions, healthcare planning and research. There are also society benefits from making this information available, supporting transparency and providing timely access for the scientific community, public health specialists and the public. This in turn reduces the onus on our stakeholders to request information, releasing capacity or further development of our outputs. We aim to present epidemiological and virological data in meaningful and accessible ways to help meet the needs of different audiences. However, we aspire to improve in this, with improved understanding of user-needs. We have also included links to other related reports and resources to avoid duplication of data presentation.

## 10. Links to surveillance reports from other countries

Public Health Wales influenza surveillance webpage: <https://phw.nhs.wales/topics/immunisation-and-vaccines/flu vaccine/weekly-influenza-and-acute-respiratory-infection-report/>

Public Health Wales COVID-19 data dashboard: <https://phw.nhs.wales/topics/latest-information-on-novel-coronavirus-covid-19/>

Public Health Wales interactive report on hospitalisations in influenza and RSV cases: <https://public.tableau.com/app/profile/public.health.wales.health.protection/viz/ARI-Hospitaladmissionsdashboard/ARIHospitaladmissionsdashboard?publish=yes>

NICE influenza antiviral usage guidance: <http://www.nice.org.uk/Guidance/TA158>

England influenza and COVID-19 surveillance: National flu and COVID-19 surveillance reports: 2024 to 2025 season - GOV.UK ([www.gov.uk](http://www.gov.uk))

Scotland seasonal respiratory surveillance: Publications - Public Health Scotland

Northern Ireland influenza surveillance: <https://www.publichealth.hscni.net/directorate-public-health/health-protection/seasonal-influenza>

European Centre for Communicable Disease: <http://ecdc.europa.eu/>

European influenza information: <http://flunewseurope.org/>

Advice on influenza immunisation <https://phw.nhs.wales/topics/immunisation-and-vaccines/flu vaccine/>

Advice on influenza immunisation (for intranet users) Influenza ([sharepoint.com](http://sharepoint.com))

For further information on this report, please email Public Health Wales using: [surveillance.requests@wales.nhs.uk](mailto:surveillance.requests@wales.nhs.uk)